

Company CITY OF SUNRISE
 Well CW #1
 Field SAWGRASS W.W.T.P
 County BROWARD State FLORIDA
 Location
 Other Services
 DHVS
 RTS
 Elevation
 Permanent Datum
 Log Measured From
 Drilling Measured From
 Elevation
 K.B.
 D.F.
 G.L.

Date 07-AUG-03
 Run Number MIT '03
 Depth Driller 3400'
 Depth Logger 3329'
 Bottom Logged Interval 3329'
 Top Log Interval SURFACE
 Open Hole Size 24"
 Type Fluid WATER
 Density / Viscosity NA
 Max. Recorded Temp. 82 DEGF
 Estimated Cement Top NA
 Time Well Ready ON ARRIVAL
 Time Logger on Bottom 00 00
 Equipment Number 102
 Location FT MYERS
 Recorded By LEE
 Witnessed By N JOHNSON

Borehole Record				Tubing Record			
Run Number	Bit Size	From	To	Weight	From	To	
	24"	CASING	3400'	500 W.T	SURFACE	3030'	

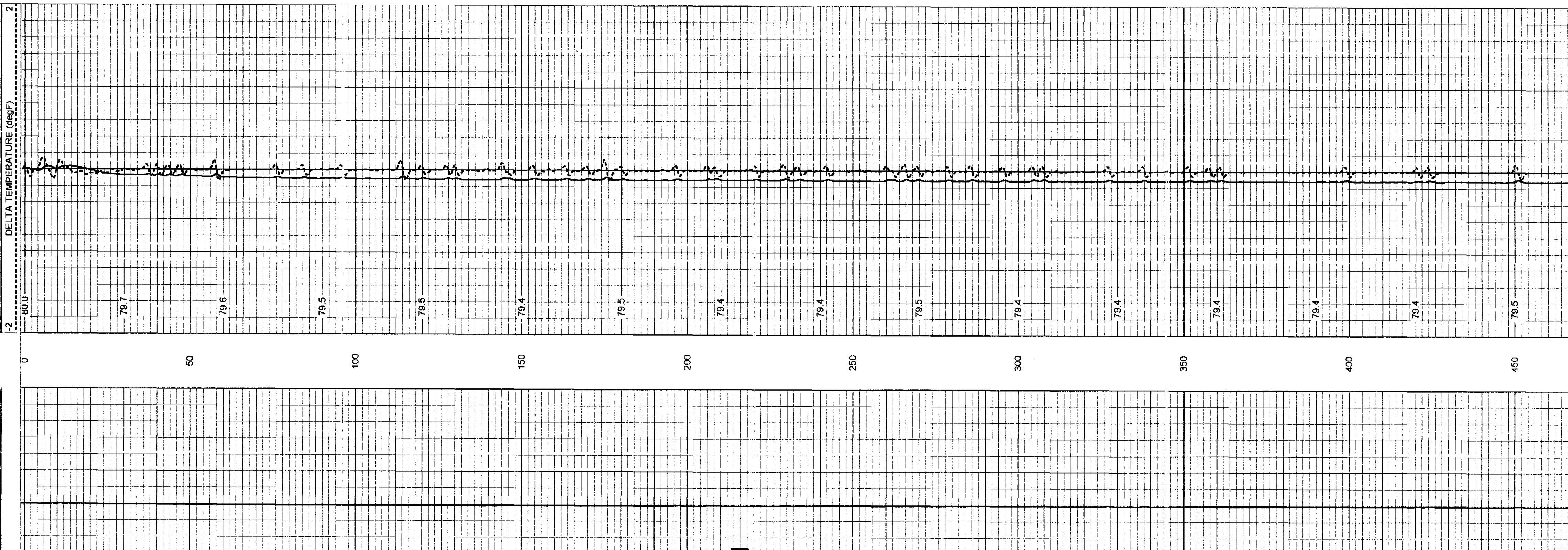
Casing Record	Size	Wgt/Ft	Top	Bottom
Surface String	24"	500 W.T	SURFACE	3040'
Prof. String				
Production String				
Liner				

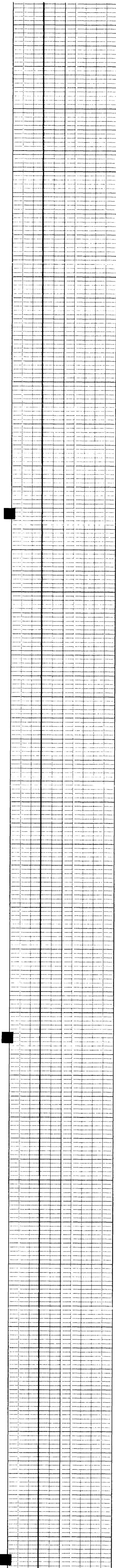
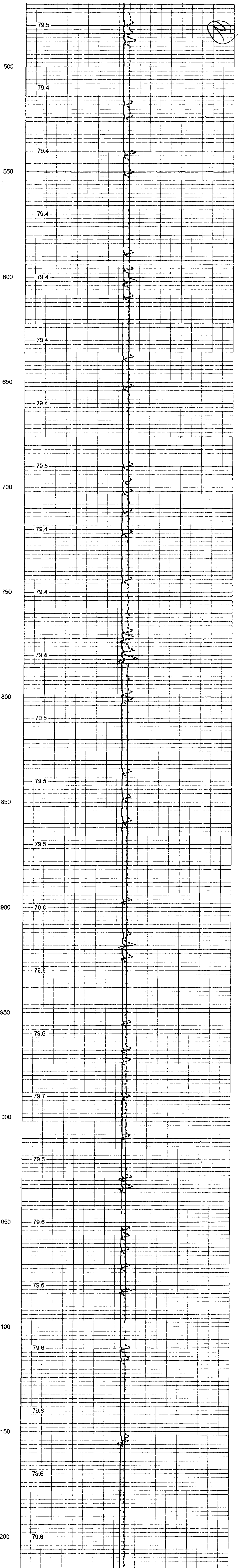
All interpretations are opinions based on inferences from electrical or other measurements and we cannot and do not guarantee the accuracy or correctness of any interpretation, and we shall not, except in the case of gross or willful negligence on our part, be liable or responsible for any loss, costs, damages, or expenses incurred or sustained by anyone relying on any interpretation made by any of our officers, agents or employees. These interpretations are also subject to our general terms and conditions set out in our current Price Schedule.

Comments
 EJECTOR 13.5' FROM TOOL BOTTOM

YOUNGQUIST BROTHERS, Inc
 GEOPHYSICAL LOGGING DIVISION
TEMPERATURE

Database File: stcw1.db
 Dataset Pathname: TEMP
 Presentation Format: temp
 Dataset Creation: Thu Aug 07 07:38:12 2003 by Log 6 2_B4
 Charted by: Depth in Feet scaled 1:240





3

79.6

1250

79.6

79.6

1300

79.6

1350

79.6

79.5

1400

79.5

79.5

1450

79.5

1500

79.5

79.5

1550

79.5

79.4

1600

79.4

1650

79.4

79.4

1700

79.4

79.4

1750

79.4

1800

79.3

79.3

1850

79.3

79.2

1900

79.3

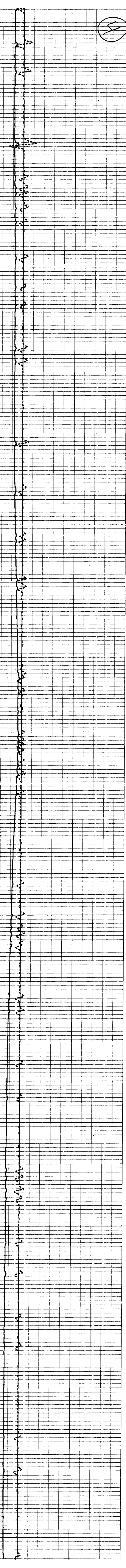
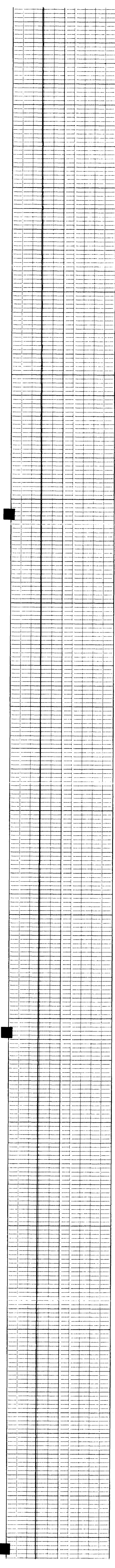
1950

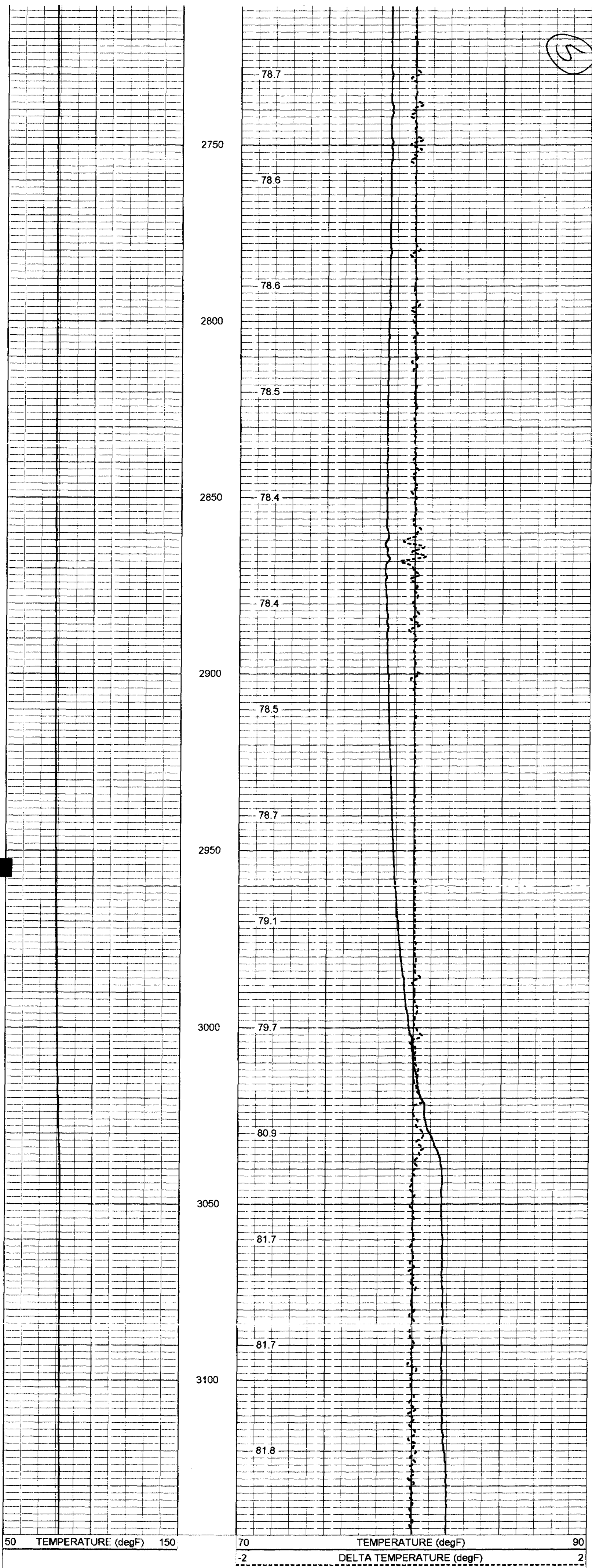
79.2



2000
2050
2100
2150
2200
2250
2300
2350
2400
2450
2500
2550
2600
2650
2700

79.3
79.1
79.1
79.2
79.2
79.2
79.3
79.4
79.5
79.6
79.7
79.5
79.2
79.2
78.9
78.8
78.8
78.7
78.7
78.6
78.6
78.6
78.6
78.6





Temperature Calibration Report				
Serial Number:		954		
Tool Model:		RTS		
Performed:		Wed Aug 06 17:17:01 2003		
Point #	Reading		Reference	
1	338.011	cps	34	degF
2	789.31	cps	78	degF
3	1553.28	cps	152	degF