

760 386



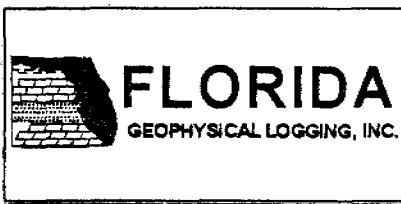
**FLUID CONDUCTIVITY  
TEMPERATURE  
LOG**

Company	HAZEN AND SAWYER	Well	MONITOR WELL #3
Field	NORTH REGIONAL W.W.T.P.	Country	BROWARD
State/Prv	FLORIDA	State/Prv	FL
Location	NORTH REGIONAL W.W.T.P.		
Permanent Datum	PAD	Elevation	13.72'
Log Measured From	PAD	Other Services	SEE COMMENTS
Drilling Measured From	PAD	Comments	
Date	28-JAN-00		
Run Number	FOUR	Run Number	103
Depth Diller	1683'	Recorded By	FT MYERS
Depth Logger	1685'	Witnessed By	DENISON
Bottom Logged Interval	1685'		J. LARCEY
Top Log Interval	CASING		
Open Hole Size	16"		
Type Fluid	MUD		
Density / Viscosity	N/A		
Max. Recorded Temp	N/A		
Estimated Cement Top	N/A		
Time Well Ready	0500		
Time Logger on Bottom	0600		
Equipment Number	103		
Location	FT MYERS		
Recorded By	DENISON		
Witnessed By	J. LARCEY		

All interpretations are opinions based on inferences from electrical or other measurements and we cannot and do not guarantee the accuracy or correctness of any interpretation, and we shall not, except in the case of gross or willful negligence on our part, be liable or responsible for any loss, costs, damages, or expenses incurred or sustained by anyone resulting from any interpretation made by any of our officers, agents or employees. These interpretations are also subject to our general terms and conditions set out in our current Price Schedule.

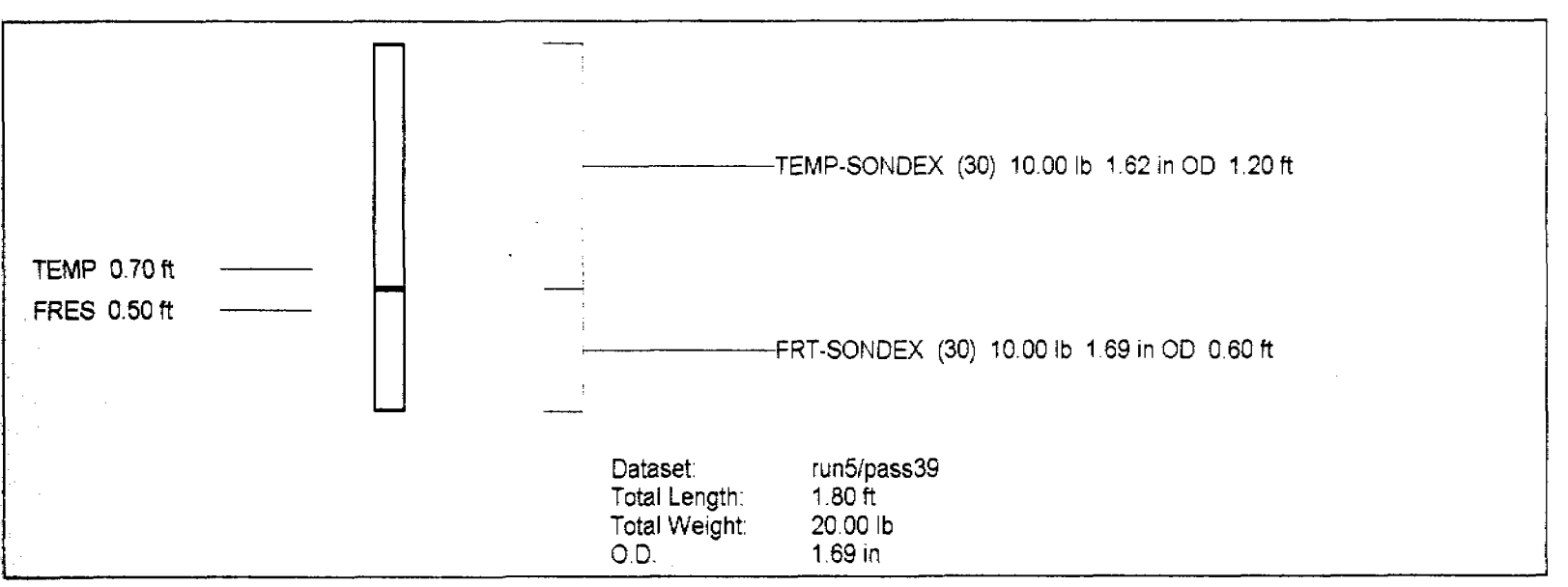
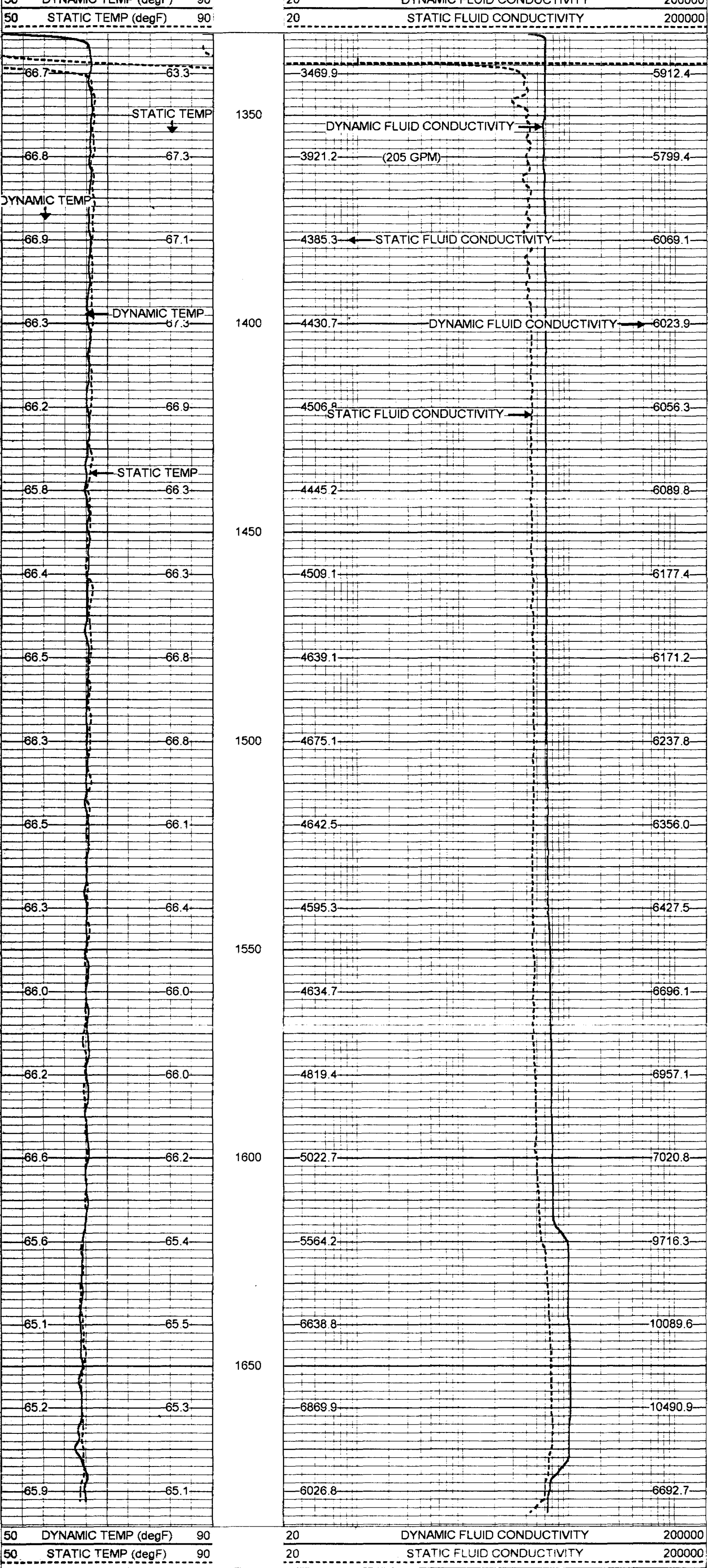
**Comments**

DUAL INDUCTION/LL3/SP  
BOREHOLE COMPENSATED SONIC  
CEMENT BOND  
XY CALIPER/GAMMA RAY  
FLOWMETER  
BOREHOLE TELEVIEWER



**MERGED FCT**

Database File: bcmw3.db  
 Dataset Pathname: run5/pass39  
 Presentation Format: frt\_mg.prs  
 Dataset Creation: Wed Jan 26 06:12:15 2000 by Log VER\_5 4  
 Charted by: Depth in Feet scaled 1.240



**FRT Calibration Report**

Serial Number:	30
Tool Model:	SONDEX
Performed:	Thu Sep 02 16:02:11 1999

Point #	Reading	Reference
1	28.607 cps	500.000
2	43.277 cps	1000.000
3	419.480 cps	10000.000
4	2384.150 cps	50000.000
5		
6		

**Temperature Calibration Report**

Serial Number:	30
Tool Model:	SONDEX
Performed:	Wed Sep 01 14:25:57 1999

Point #	Reading	Reference
1	129.745 cps	35 degF
2	413.774 cps	94 degF
3	668.279 cps	145 degF