

689451

Schlumberger
HIGH RESOLUTION TEMPERATURE LOG

CSU Field Log

COMPANY: YOUNGQUIST BROTHERS DRILLING
WELL: NORTH DISTRICT REGIONAL IW-2
FIELD: POMPANO BEACH
COUNTY: BROWARD
STATE: FLORIDA
LOCATION: NORTH DISTRICT REGIONAL WASTE WATER TREATMENT PLANT

PERMANENT DATUM: PAD
ELEV. OF PERM. DATUM: PAD
LOG MEASURED FROM: ABOVE PERM. DATUM
DRLG. MEASURED FROM: PAD

DATE: 12 MAR 90
RUN NO: NINE

DEPTH-DRILLER: 3521.0 F
DEPTH-LOGGER: 3517.0 F
BITM. LOG INTERVAL: 3514.0 F
TOP LOG INTERVAL: 0.0 F
CASING-DRILLER: 2990.0 F
CASING-LOGGER: 2989.0 F
CASING WEIGHT: 24#
BIT SIZE: 129.000 LB/F
DEPTH: 22 1/2"
3521.0 F

OTHER SERVICES-
RATS

PROGRAM
TAPE NO: 30.4
SERVICE
ORDER NO: 520002

TYPE FLUID IN HOLE: WATER
DENSITY: 8.34 LB/G
TIME CIRC. STOPPED:
TIME LOGGER ON BTM.:
MAX. REC. TEMP: 81.0 DEGF
LOGGING UNIT NO: 8193
LOGGING UNIT LOC: FT. MYERS
RECORDED BY: S. MILLER
WITNESSED BY: BRANTLEY/WHEATLEY/HIGHSMITH

REMARKS:

EQUIPMENT NUMBERS-

ALL INTERPRETATIONS ARE OPINIONS BASED ON INFERENCES FROM ELECTRICAL OR OTHER MEASUREMENTS AND WE CANNOT, AND DO NOT GUARANTEE THE ACCURACY OR CORRECTNESS OF ANY INTERPRETATIONS, AND WE SHALL NOT, EXCEPT IN THE CASE OF GROSS OR WILLFUL NEGLIGENCE ON OUR PART, BE LIABLE OR RESPONSIBLE FOR ANY LOSS, COSTS, DAMAGES OR EXPENSES INCURRED OR SUSTAINED BY ANYONE RESULTING FROM ANY INTERPRETATION MADE BY ANY OF OUR OFFICERS, AGENTS OR EMPLOYEES. THESE INTERPRETATIONS ARE ALSO SUBJECT TO OUR GENERAL TERMS AND CONDITIONS AS SET OUT IN OUR CURRENT PRICE SCHEDULE.

PARAMETERS

NAME	VALUE	UNIT	NAME	VALUE	UNIT
WMUD	8.30000	LB/G	SGSN	0000A-00011	
CDAT			FCHD	CSID	
PTHR	10.0000	F/MN	NTHR	-10.0000	F/MN
TIRA	.500000		VPCF	.830000	
FDSH	0.0	G/C3	QIDP	FLOW	
TCSH	0.0	IN	BS	8.00000	IN
BHS	CASE				

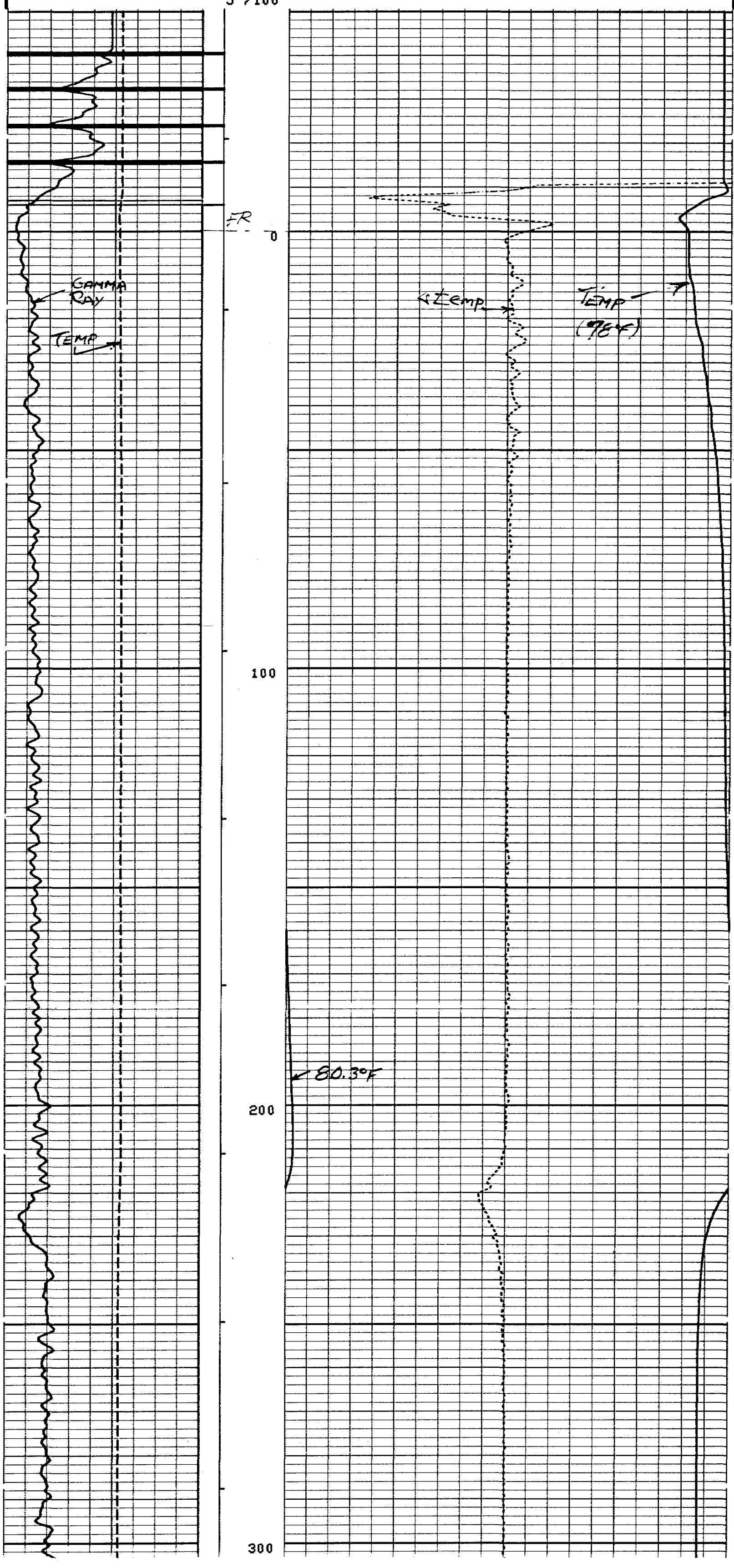
SENSOR MEASURE POINT TO TOOL ZERO

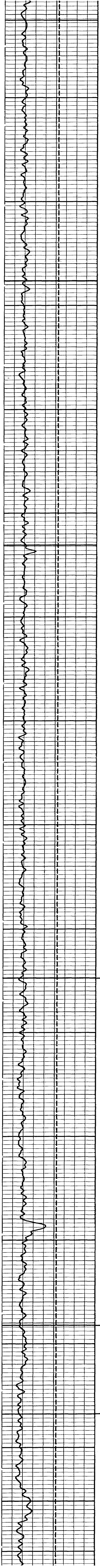
DTEM	2.5	FEET	MP	1.1	FEET
TEMP	2.5	FEET	CCL	41.0	FEET
CVEL	0.0	FEET	TENS	41.0	FEET
EXT	0.0	FEET	EXP3	0.0	FEET
EXP2	0.0	FEET	EXP1	0.0	FEET
GRSG	9.9	FEET	UEI	23.2	FEET
LEI	22.4	FEET	GRTE	20.6	FEET
GR	32.1	FEET			

0.0	100.00	60.000	80.000
GR (GAPI)		TEMP (DEGF)	
-13.50	1.5000	-1.000	1.0000
CCL		DTEM (DF/F)	
0.0	150.00		
TEMP (DEGF)			

CP 30.4 FILE 6 12-MAR-90 09:20

5"/100'





10

400

500

600

700

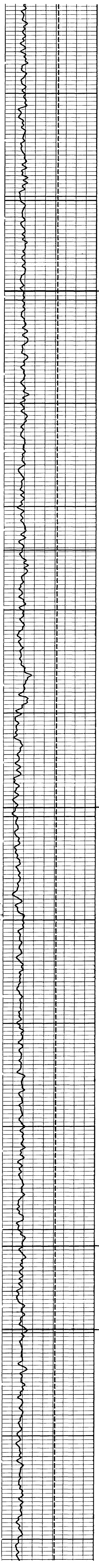
20

800

900

1000

(5)



30

1100

1200

1300

1400

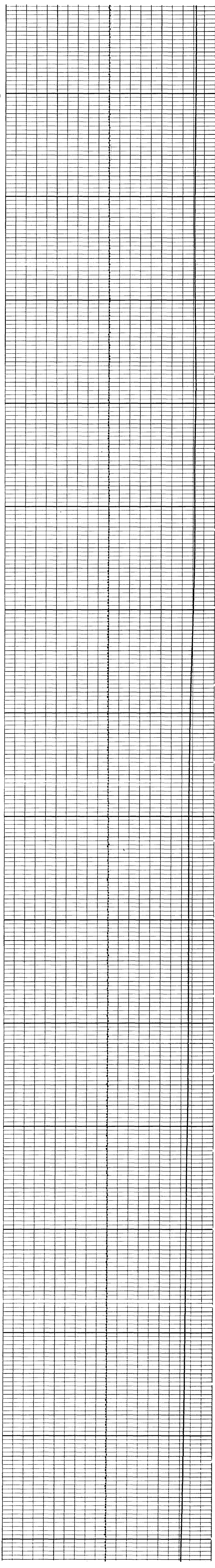
40

1500

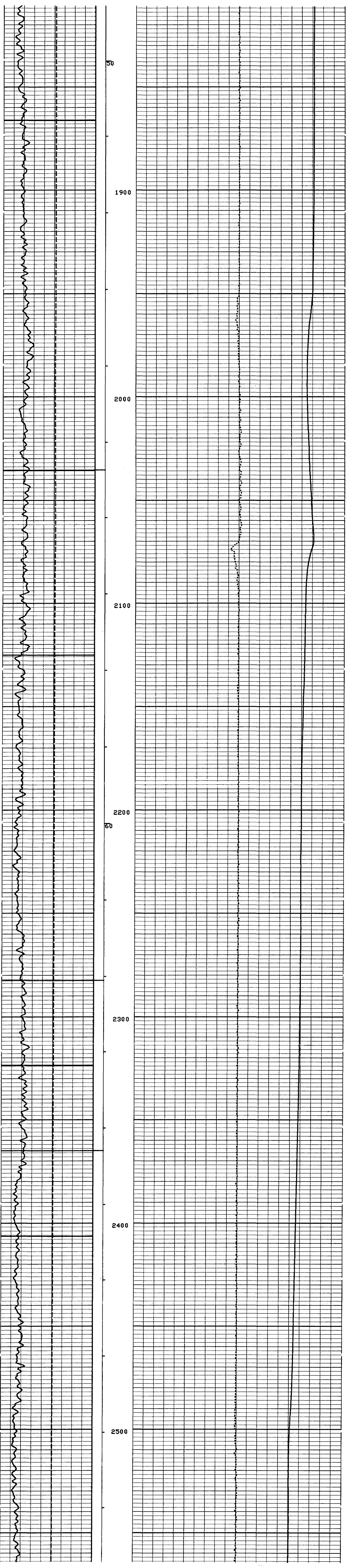
1600

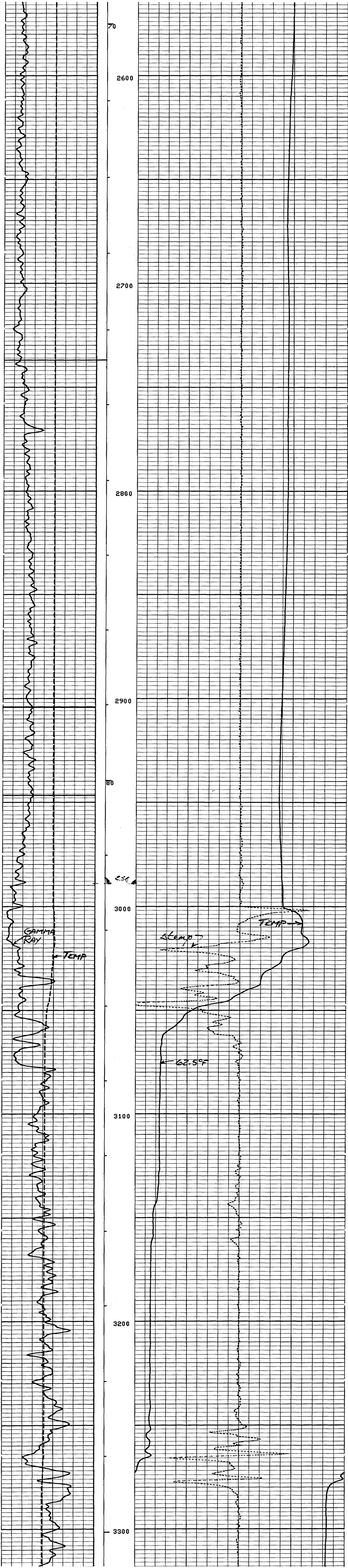
1700

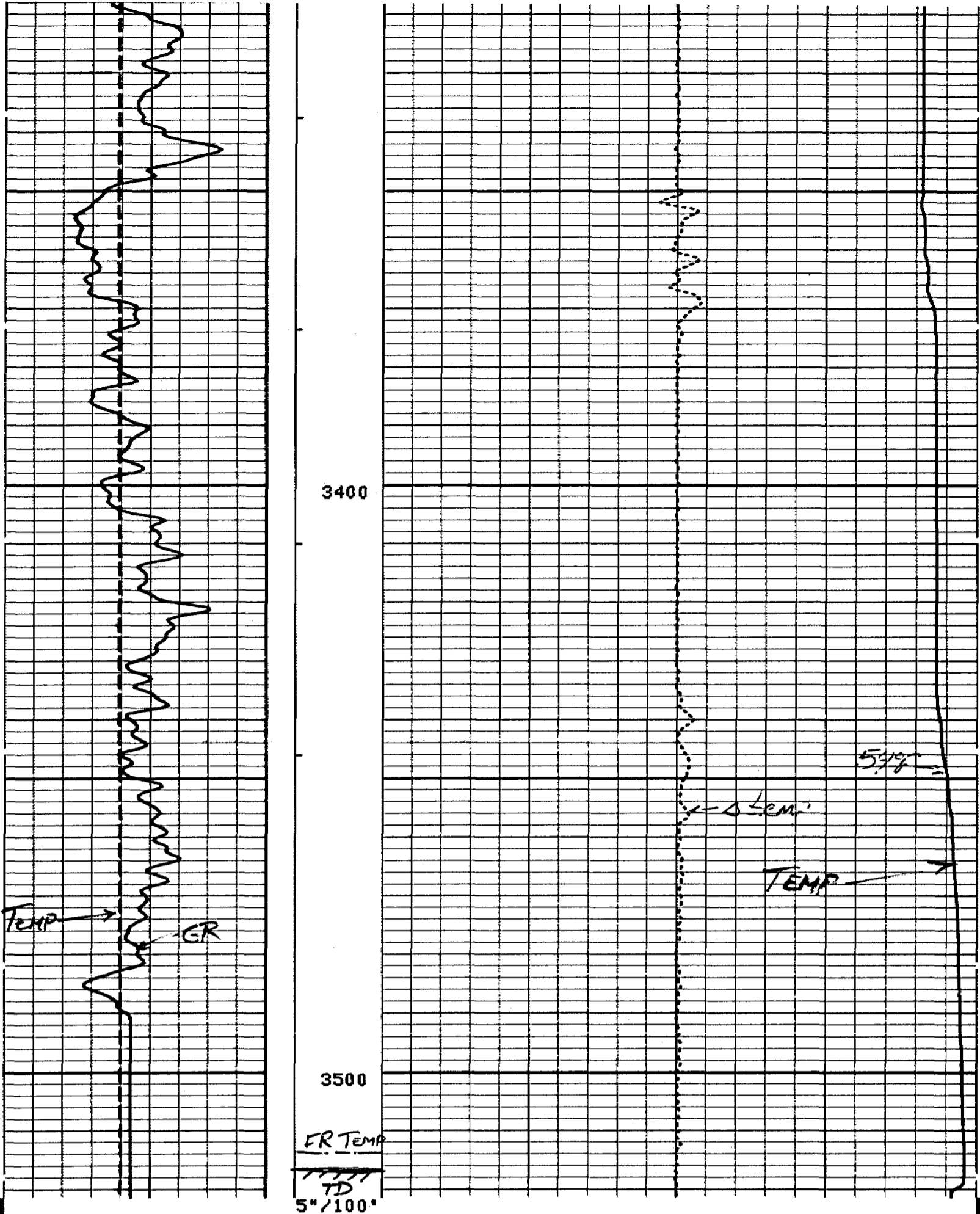
1800



(5)







CP 30.4

FILE 6

12-MAR-90 10:56

0.0	100.00	60.000	80.000
GR (GAPI)		TEMP (DEGF)	
-13.50	1.5000	-1.000	1.0000
CCL		DTM (DF/F)	
0.0	150.00		
TEMP (DEGF)			

DATA ACQUIRED LOGGING DOWN

EVENT MARK SUMMARY:

OUTPUT	INTERVAL BETWEEN PIPS	DEPTH TRACK EDGE
ETIM	60.0000 S	LEFT EDGE

BEFORE SURVEY CALIBRATION SUMMARY

PERFORMED: 12-MAR-90 07:33
 PROGRAM FILE: RTS (VERSION 30.4 00/00/00 87/11/19)

TETE DETECTOR CALIBRATION SUMMARY

GRTE	MEASURED		CALIBRATED	UNITS
	BKGD	JIG		
	65	181	135	GAPI

SGTR DETECTOR CALIBRATION SUMMARY

GRSG	MEASURED		CALIBRATED	UNITS
	BKGD	JIG		
	43	160	135	GAPI

MTSC ELECTRONICS CALIBRATION SUMMARY

MP	MEASURED		CALIBRATED		UNITS
	ZERO	PLUS	ZERO	PLUS	
	0.0	0.0	0.0	0.0	PSIG

MTSC ELECTRONICS CALIBRATION SUMMARY

TEMP	MEASURED		CALIBRATED		UNITS
	ZERO	PLUS	ZERO	PLUS	
	52.1	160.4	0.0	200.0	DEGF

ATTB DETECTOR CALIBRATION SUMMARY

GR	MEASURED		CALIBRATED	UNITS
	BKGD	JIG		
	87	188	135	GAPI



HIGH RESOLUTION TEMPERATURE LOG