

689445

Schlumberger

HIGH RESOLUTION TEMPERATURE LOG

CSU Field Log

COMPANY: YOUNGQUIST BROTHERS DRILLING
 WELL: NORTH DISTRICT REGIONAL IM-2
 FIELD: POMPANO BEACH
 COUNTY: BROWARD
 STATE: FLORIDA
 LOCATION: NORTH DISTRICT REGIONAL WASTE WATER TREATMENT PLANT

PERMANENT DATUM: PAD ELEVATIONS-
 ELEV. OF PERM. DATUM: KB:
 LOG MEASURED FROM: PAD DF:
 DRLG. MEASURED FROM: PAD ABOVE PERM. DATUM GL:

DATE: 17 FEB 90
 RUN NO: EIGHT

DEPTH-DRILLER: 3521.0 F
 DEPTH-LOGGER: 3517.0 F
 BTM. LOG INTERVAL: 3516.0 F
 TOP LOG INTERVAL: 2989.0 F
 CASING-DRILLER: 2990.0 F
 CASING-LOGGER: 2989.0 F
 HEIGHT: 24"
 BIT SIZE: 22 1/2"
 DEPTH: 3521.0 F

OTHER SERVICES-
 X-Y CALIPER
 DIL/SFL
 BHC/VDL
 FLUID R.S
 FLOM

PROGRAM
 TAPE NO:
 SERVICE
 ORDER NO:
 520000

TYPE FLUID IN HOLE: SALTWATER
 DENSITY: 9.00 LB/G
 TIME CIRC. STOPPED: 12:00 16-FEB-90
 TIME LOGGER ON BTM.: 03:45 17-FEB-90
 MAX. REC. TEMP:
 LOGGING UNIT NO: 8306
 LOGGING UNIT LOC: FORT MYERS
 RECORDED BY: S. MILLER
 WITNESSED BY: J. BRANTLEY

REMARKS:
 DATA GATHERED LOGGING DOWN.

EQUIPMENT NUMBERS-

ALL INTERPRETATIONS ARE OPINIONS BASED ON INFERENCES FROM ELECTRICAL OR OTHER MEASUREMENTS AND WE CANNOT, AND DO NOT GUARANTEE THE ACCURACY OR CORRECTNESS OF ANY INTERPRETATIONS, AND WE SHALL NOT, EXCEPT IN THE CASE OF GROSS OR WILLFUL NEGLIGENCE ON OUR PART, BE LIABLE OR RESPONSIBLE FOR ANY LOSS, COSTS, DAMAGES OR EXPENSES INCURRED OR SUSTAINED BY ANYONE RESULTING FROM ANY INTERPRETATION MADE BY ANY OF OUR OFFICERS, AGENTS OR EMPLOYEES. THESE INTERPRETATIONS ARE ALSO SUBJECT TO OUR GENERAL TERMS AND CONDITIONS AS SET OUT IN OUR CURRENT PRICE SCHEDULE.

CP 30.4 FILE 21 17-FEB-90 03:26

PARAMETERS

NAME	VALUE	UNIT	NAME	VALUE	UNIT
WMUD	8.30000	LB/G	SGSN	0000A-00011	
CDAT			FCHD	CSID	
PTHR	10.0000	F/MN	NTHR	-10.0000	F/MN
TIRA	.500000		VPCF	.830000	
FDSH	0.0	G/C3	QIDP	FLOW	
TCSH	0.0	IN	BS	22.5000	IN
BHS	CASE		CSIZ	24.0000	IN

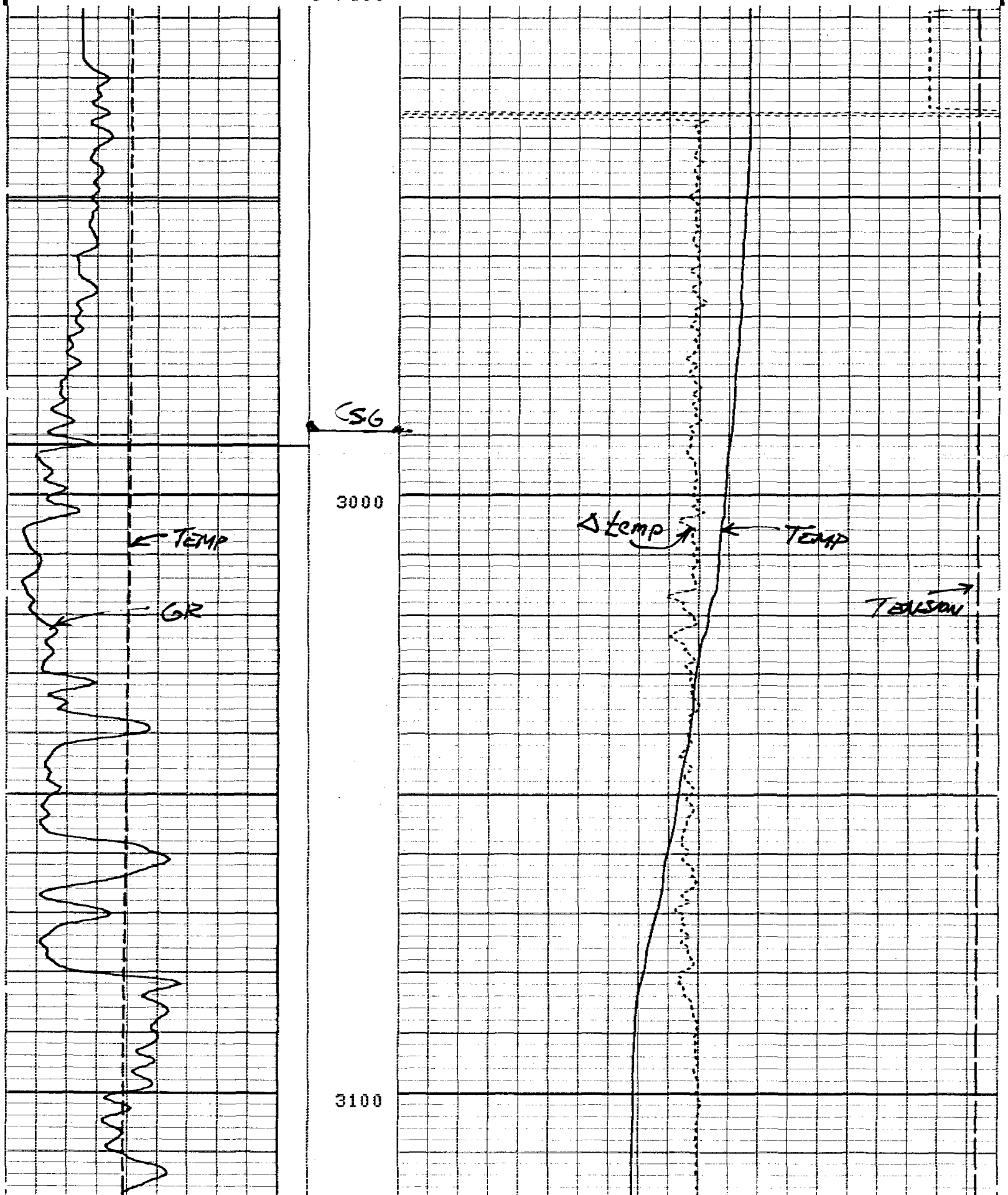
SENSOR MEASURE POINT TO TOOL ZERO

DTEM	5.4	FEET	MP	4.0	FEET
TEMP	5.4	FEET	SVFG	1.0	FEET
SPIN	1.0	FEET	CCL	22.2	FEET
CVEL	1.0	FEET	TENS	22.2	FEET
EXT	0.0	FEET	EXP3	0.0	FEET
EXP2	0.0	FEET	EXP1	0.0	FEET
GR	13.3	FEET			

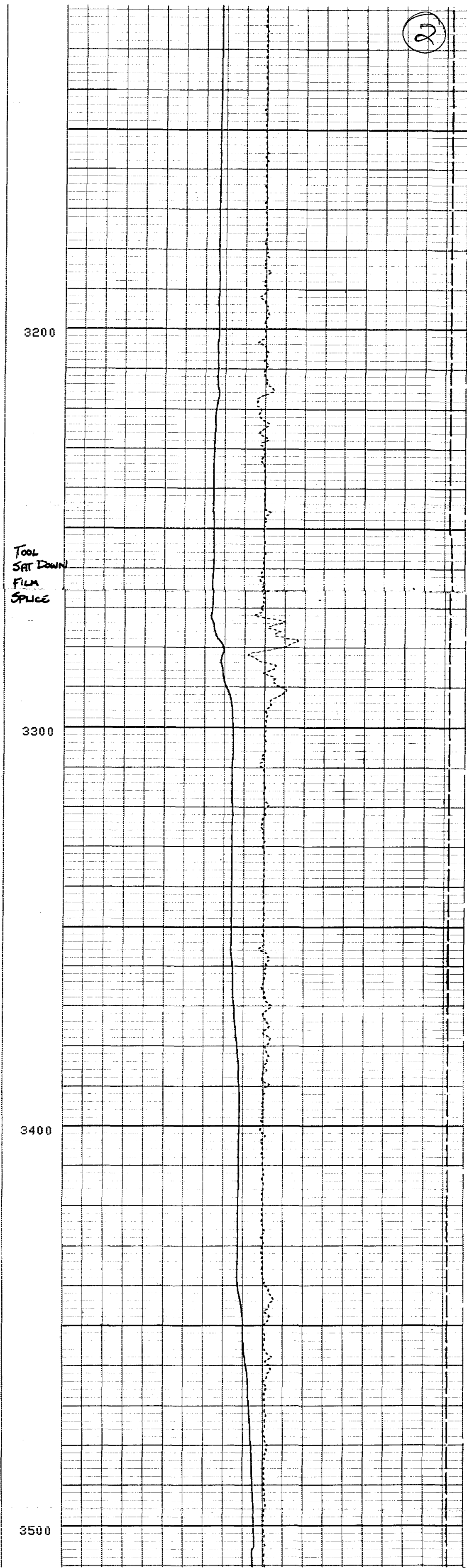
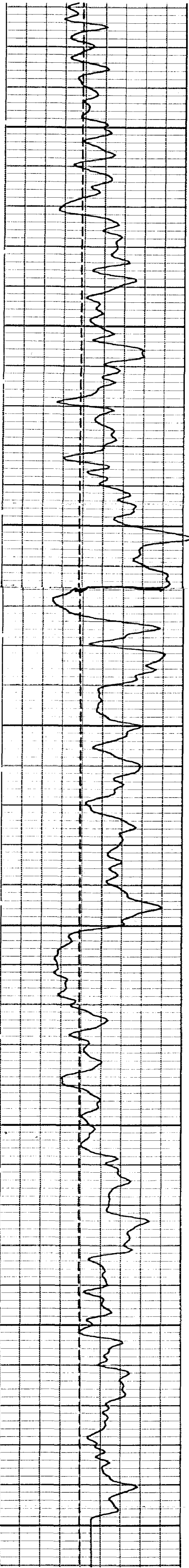
0.0	100.00	50.000	70.000
GR (GAPI)		TEMP(DEGF)	
-13.50	1.5000	-1.000	1.0000
CCL		DTEM(DF/F)	
0.0	150.00	10000.	0.0
TEMP(DEGF)		TENS(LB)	

CP 30.4 FILE 19 17-FEB-90 03:02

5"/100'



2



5"/100"

CP 30.4 FILE 20 17-FEB-90 03:25

0.0	GR (GAPI)	100.00	50.000	TEMP(DEGF)	70.000
-13.50	CCL	1.5000	-1.000	DTEM(DF/F)	1.0000
0.0	TEMP(DEGF)	150.00	10000.	TENS(LB)	0.0

DATA ACQUIRED LOGGING DOWN

BEFORE SURVEY CALIBRATION SUMMARY

PERFORMED: 17-FEB-90 02:35
PROGRAM FILE: PL (VERSION 30.4 00/00/00 87/11/19)

MTSC ELECTRONICS CALIBRATION SUMMARY

TEMP	MEASURED		CALIBRATED		UNITS
	ZERO	PLUS	ZERO	PLUS	
	52.1	160.4	.0	200.0	DEGF

ATTB DETECTOR CALIBRATION SUMMARY

GR	MEASURED		CALIBRATED	UNITS
	BKGD	JIG		
	87	188	135	GAPI



HIGH RESOLUTION TEMPERATURE LOG

