

684839

Schlumberger  
HIGH RESOLUTION TEMPERATURE LOG



COMPANY: YOUNGQUIST BROTHERS DRILLING  
WELL: NORTH DISTRICT REGIONAL IM-1  
FIELD: POMPANO BEACH  
COUNTY: BROWARD  
STATE: FLORIDA  
LOCATION: NORTH BROWARD DISTRICT REGIONAL  
WASTE WATER TREATMENT PLANT

PERMANENT DATUM: PAD  
ELEV. OF PERM. DATUM: PAD  
LOG MEASURED FROM: PAD  
DRLG. MEASURED FROM: PAD

ELEVATIONS-  
KB:  
DF:  
GL:

DATE: 18 MAY 90  
RUN NO: TWELVE

DEPTH-DRILLER: 3512.0 F  
DEPTH-LOGGER: 3507.0 F  
BTM. LOG INTERVAL: 3507.0 F  
TOP LOG INTERVAL: 0.0 F  
CASING-DRILLER: 2990.0 F  
CASING-LOGGER: 2987.0 F  
CASING: 24"  
HEIGHT: 22 1/2"  
BIT SIZE: 3514.0 F  
DEPTH: 3514.0 F

OTHER SERVICES-  
RTS

PROGRAM  
TAPE NO:  
SERVICE  
ORDER NO:  
523362

TYPE FLUID IN HOLE: WATER  
DENSITY: 8.34 LB/G  
MAX. REC. TEMP: 83.0 DEGF  
LOGGING UNIT NO: 8193  
LOGGING UNIT LOC: FORT MYERS  
RECORDED BY: S. MILLER  
WITNESSED BY: BRANTLEY/VERON/HIGHSMITH

REMARKS:  
DATA GATHERED LOGGING DOWN.

EQUIPMENT NUMBERS-

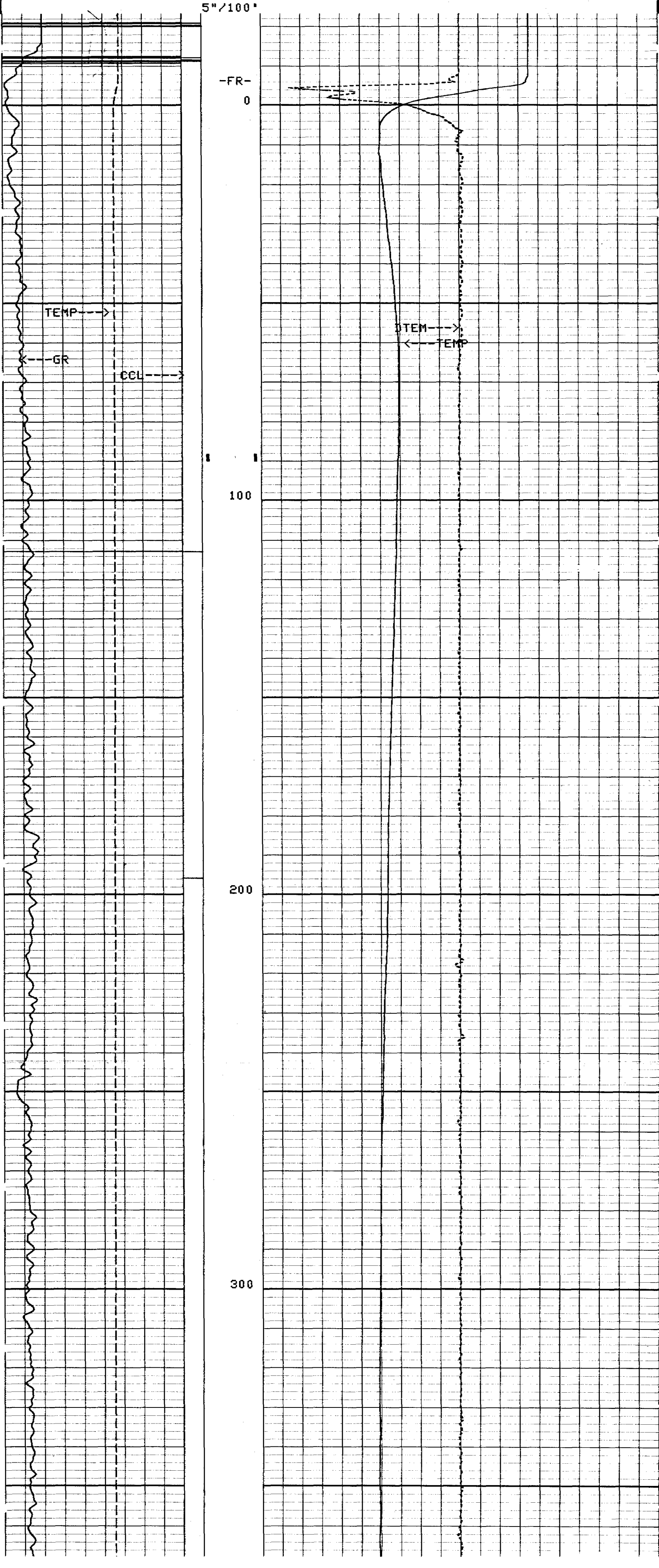
ALL INTERPRETATIONS ARE OPINIONS BASED ON INFERENCES FROM ELECTRICAL OR OTHER MEASUREMENTS AND WE CANNOT, AND DO NOT GUARANTEE THE ACCURACY OR CORRECTNESS OF ANY INTERPRETATIONS, AND WE SHALL NOT, EXCEPT IN THE CASE OF GROSS OR WILLFUL NEGLIGENCE ON OUR PART, BE LIABLE OR RESPONSIBLE FOR ANY LOSS, COSTS, DAMAGES OR EXPENSES INCURRED OR SUSTAINED BY ANYONE RESULTING FROM ANY INTERPRETATION MADE BY ANY OF OUR OFFICERS, AGENTS OR EMPLOYEES. THESE INTERPRETATIONS ARE ALSO SUBJECT TO OUR GENERAL TERMS AND CONDITIONS AS SET OUT IN OUR CURRENT PRICE SCHEDULE.

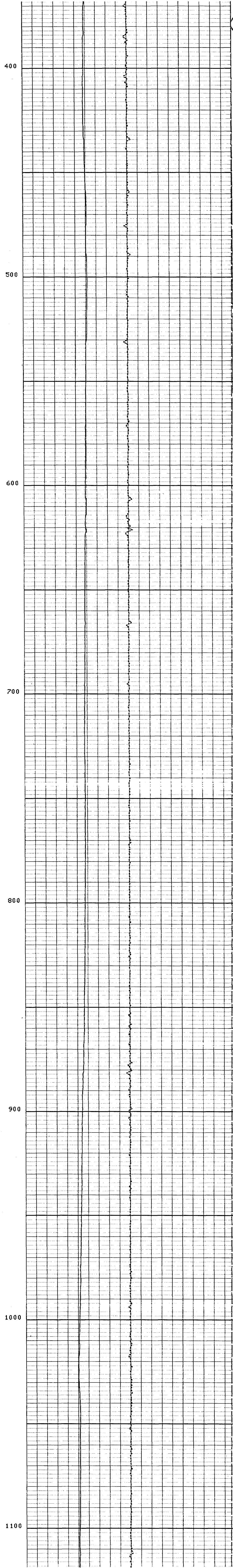
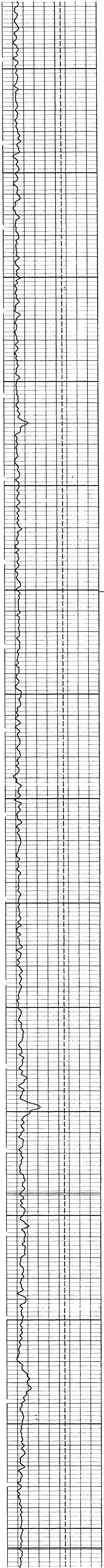
CP 32.2 FILE 9 18-MAY-1990 11:56

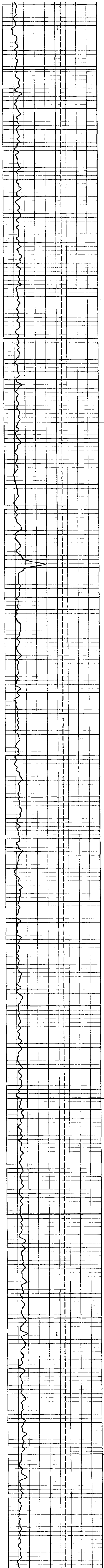
FILES SPLICED 8 TO 7  
SPLICE DEPTH 89.5 F

|            |        |            |            |     |
|------------|--------|------------|------------|-----|
| TEMP(DEGF) | 150.00 | TENS(LBF)  | 5000.0     | 0.0 |
| GR (GAPI)  | 100.00 | DTEM(DF/F) |            |     |
| CCL        | 1.5000 | -1.000     | 1.0000     |     |
|            |        | 60.000     | TEMP(DEGF) |     |
|            |        |            | 70.000     |     |

CP 32.2 FILE 30 18-MAY-1990 21:49  
INPUT FILE(S) 7  
DATA ACQUIRED 18-MAY-1990 10:24







1200

1300

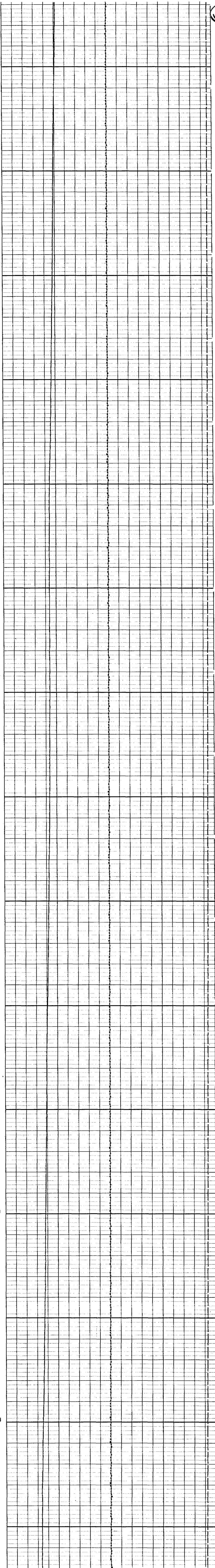
1400

1500

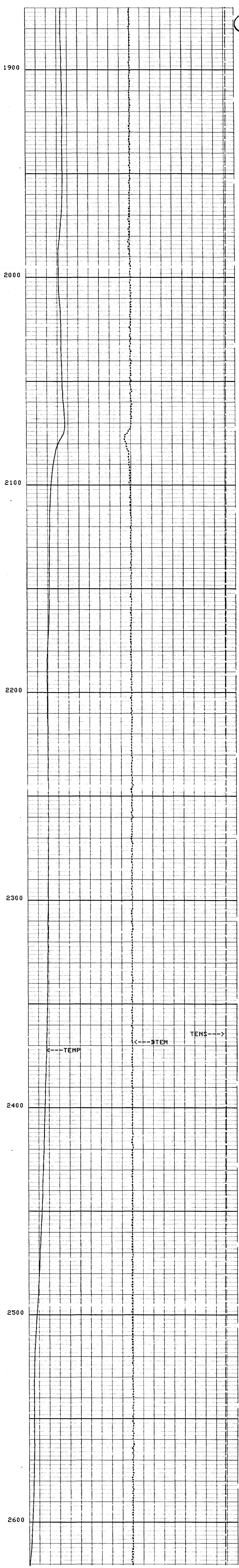
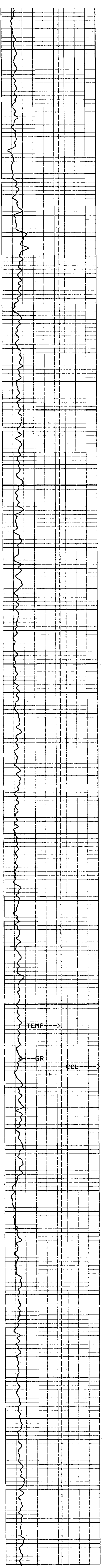
1600

1700

1800







1900

2000

2100

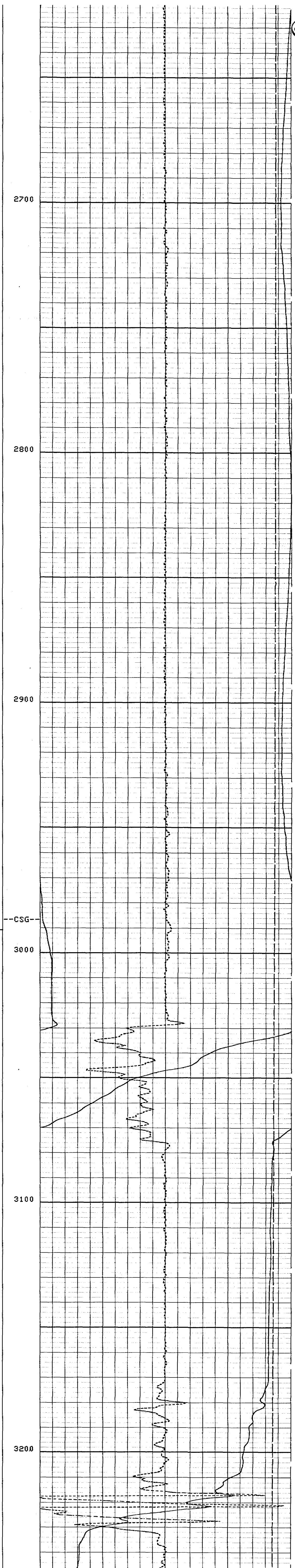
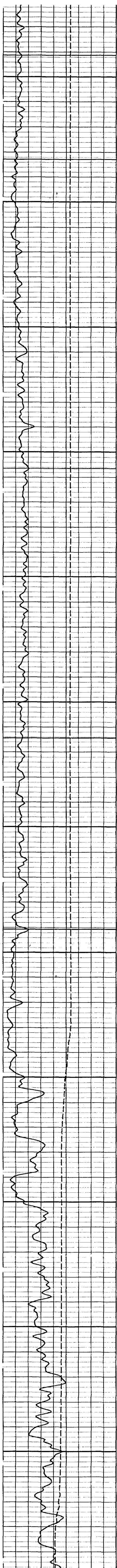
2200

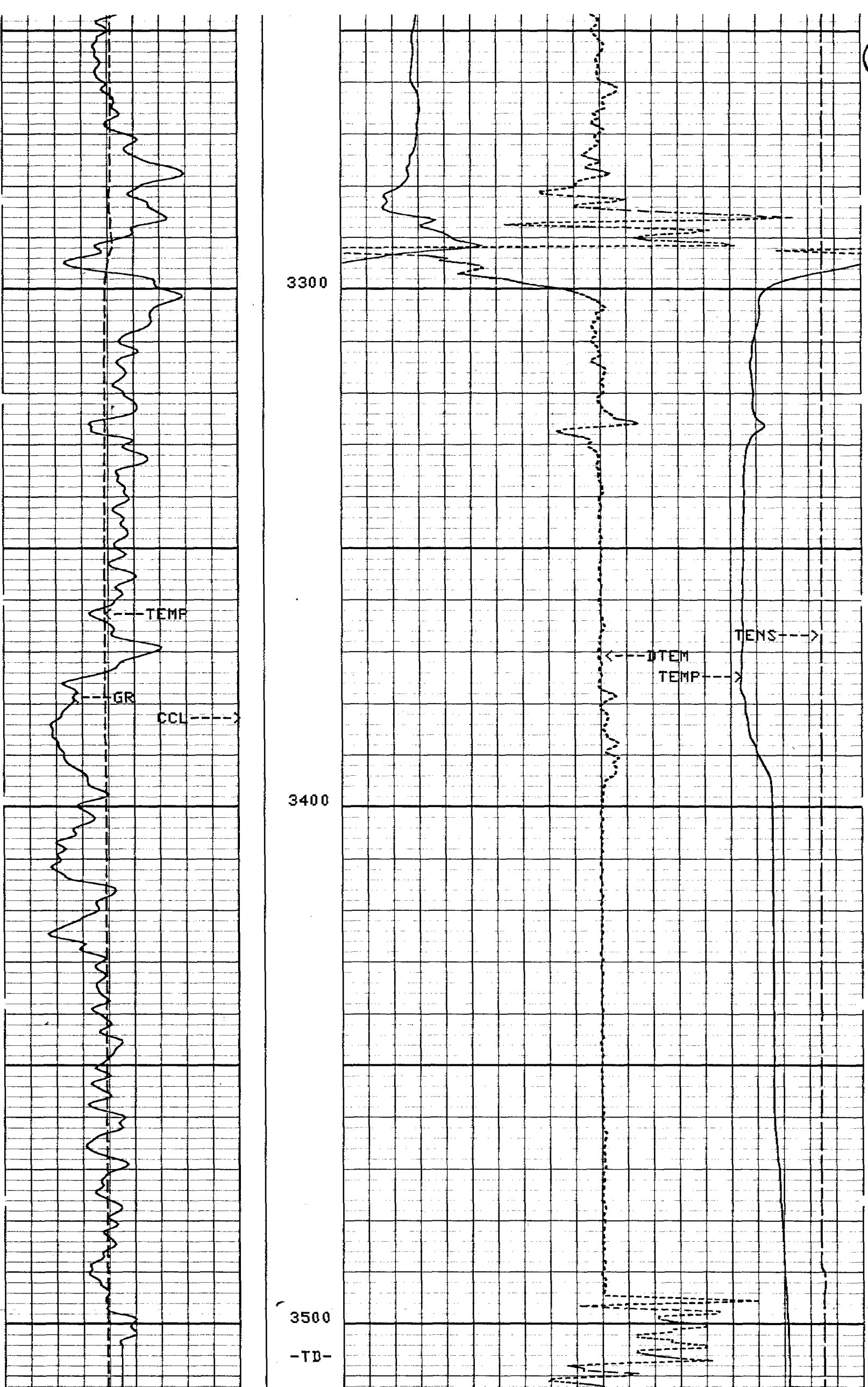
2300

2400

2500

2600





CP 32.2 FILE 30 18-MAY-1990 21:42  
 INPUT FILE(S) DATA ACQUIRED  
 8 18-MAY-1990 11:56

|            |        |             |        |
|------------|--------|-------------|--------|
| TEMP(DEGF) | 150.00 | TENS(LBF)   | 5000.0 |
| GR (GAPI)  | 100.00 | DTEMP(DF/F) | 0.0    |
| CCL        | -13.50 | TEMP(DEGF)  | 1.0000 |
|            | 1.5000 |             | 60.000 |
|            |        |             | 70.000 |

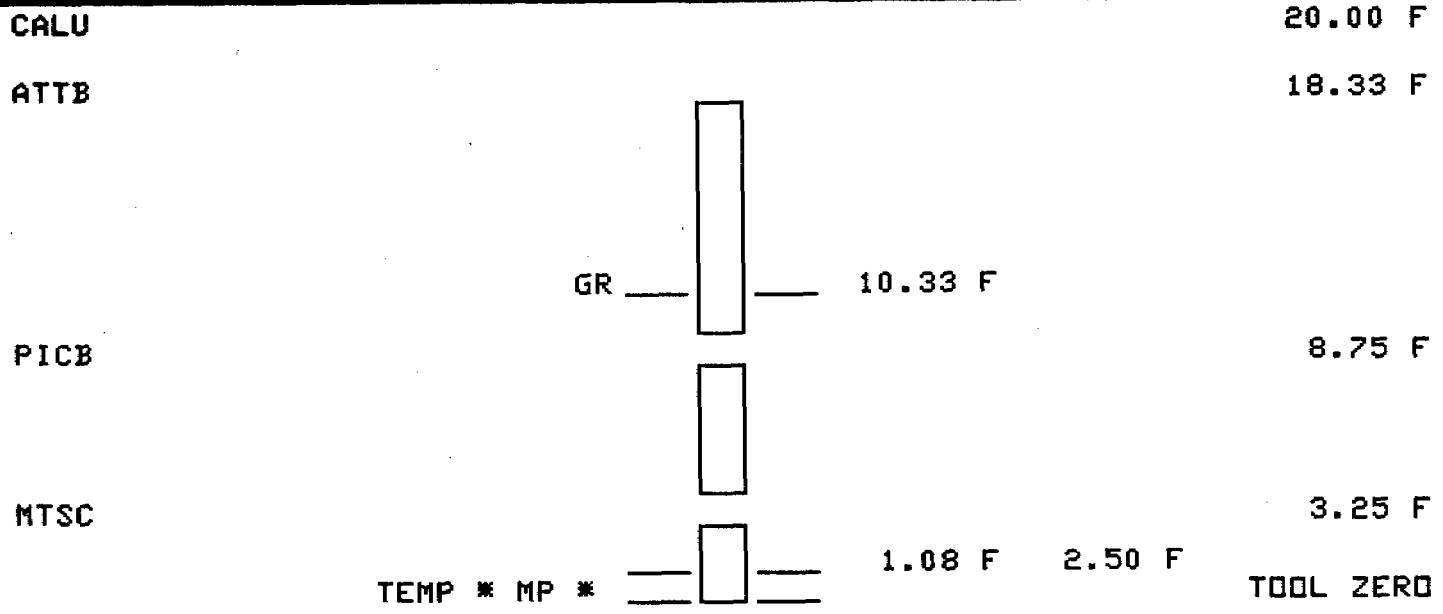
SENSOR MEASURE POINT TO TOOL ZERO

|      |      |      |      |      |      |
|------|------|------|------|------|------|
| GR   | 10.3 | FEET | CVEL | 0.0  | FEET |
| MP   | 1.1  | FEET | TEMP | 2.5  | FEET |
| EXP3 | 0.0  | FEET | EXT  | 0.0  | FEET |
| EXP1 | 0.0  | FEET | EXP2 | 0.0  | FEET |
| CCL  | 19.2 | FEET | TENS | 19.2 | FEET |

PARAMETERS

| NAME | VALUE   | UNIT | NAME | VALUE       | UNIT |
|------|---------|------|------|-------------|------|
| PP   | NORM    |      | DD   | 0.0         | F    |
| WMUD | 8.34000 | LB/G | SGSN | 0000A-00011 |      |
| CDAT |         |      | FCHD | CSID        |      |
| PTHR | 10.0000 | F/MN | NTHR | -10.0000    | F/MN |
| TIRA | .500000 |      | VPCF | .830000     |      |
| DEVI | 0.0     | DEG  | FDSH | 0.0         | G/C3 |
| QIQP | FLOW    |      | TCSH | 0.0         | IN   |
| BS   | 22.5000 | IN   | BHS  | CASE        |      |

LOGGING TOOL STRING SKETCH



TOTAL TOOL STRING LENGTH IS 20.00 F.  
 TOTAL TOOL STRING WEIGHT IS 136.00 LB IN AIR.

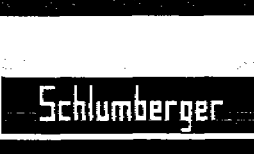
BEFORE SURVEY CALIBRATION SUMMARY

PERFORMED: 18-MAY-1990 08:04  
 PROGRAM FILE: PL (VERSION 32.2 00/00/00 88/11/16)

MTSC ELECTRONICS CALIBRATION SUMMARY

|      | MEASURED | ZERO  | PLUS | CALIBRATED | ZERO  | PLUS | UNITS |
|------|----------|-------|------|------------|-------|------|-------|
| TEMP | 52.3     | 160.7 |      | 0.0        | 200.0 |      | DEGF  |

CP 32.2 FILE 0 18-MAY-1990 08:04



HIGH RESOLUTION TEMPERATURE LOG