

684849

Schlumberger
HIGH RESOLUTION TEMPERATURE LOG



COMPANY: YOUNGQUIST BROTHERS DRILLING
 WELL: NORTH DISTRICT REGIONAL IM-1
 FIELD: POMPANO BEACH
 COUNTY: BROWARD
 STATE: FLORIDA
 LOCATION: NORTH BROWARD DISTRICT REGIONAL
 WASTE WATER TREATMENT PLANT

PERMANENT DATUM: PAD
 ELEVATION: KB: 32.2
 DF: 32.2
 GL: 32.2

LOG MEASURED FROM: PAD DATUM
 DRLG. MEASURED FROM: PAD

DATE: 18 MAY 90
 RUN NO: TWELVE

DEPTH-DRILLER: 3512.0 F
 DEPTH-LOGGER: 3507.0 F
 BIT. LOG INTERVAL: 3507.0 F
 TOP LOG INTERVAL: 0.0 F

CASING-DRILLER: 2990.0 F
 CASING-LOGGER: 2987.0 F
 CASING: 24"
 HEIGHT: 22 1/2"
 BIT SIZE: 3514.0 F
 DEPTH: 3514.0 F

OTHER SERVICES-RTS
 PROGRAM TAPE NO: 32.2
 SERVICE ORDER NO: 5833362

TYPE FLUID IN HOLE: WATER
 DENSITY: 8.34 LB/G
 MAX. REC. TEMP: 83.0 DEGF

LOGGING UNIT NO: 8193
 LOGGING UNIT LOC: FORT MYERS
 RECORDED BY: S. MILLER
 WITNESSED BY: BRANTLEY/VERDON/HIGHSMITH

REMARKS:
 DATA GATHERED LOGGING DOWN.

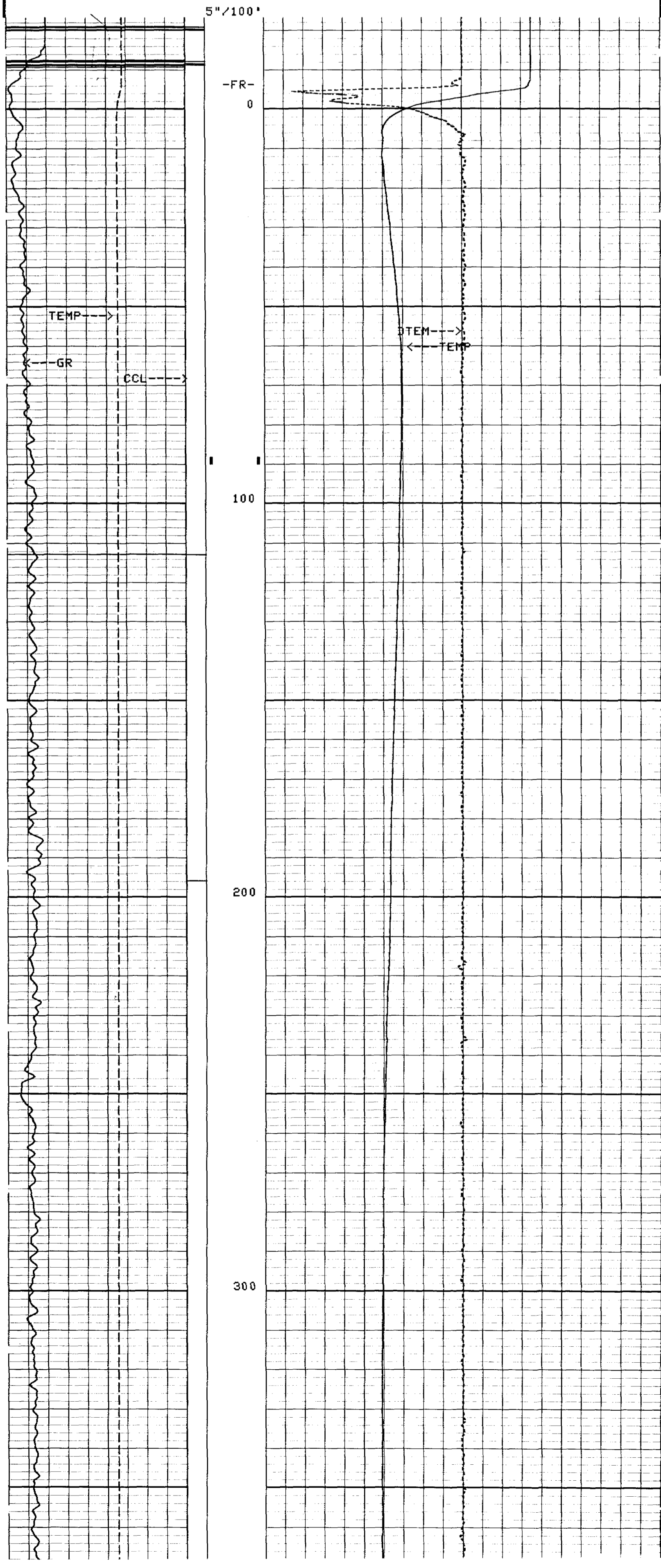
EQUIPMENT NUMBERS-

ALL INTERPRETATIONS ARE OPINIONS BASED ON INFERENCES FROM ELECTRICAL OR OTHER MEASUREMENTS AND WE CANNOT, AND DO NOT GUARANTEE THE ACCURACY OR CORRECTNESS OF ANY INTERPRETATIONS, AND WE SHALL NOT, EXCEPT IN THE CASE OF GROSS OR WILLFUL NEGLIGENCE ON OUR PART, BE LIABLE OR RESPONSIBLE FOR ANY LOSS, COSTS, DAMAGES OR EXPENSES INCURRED OR SUSTAINED BY ANYONE RESULTING FROM ANY INTERPRETATION MADE BY ANY OF OUR OFFICERS, AGENTS OR EMPLOYEES. THESE INTERPRETATIONS ARE ALSO SUBJECT TO OUR GENERAL TERMS AND CONDITIONS AS SET OUT IN OUR CURRENT PRICE SCHEDULE.

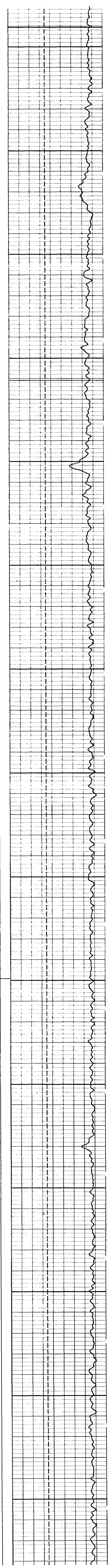
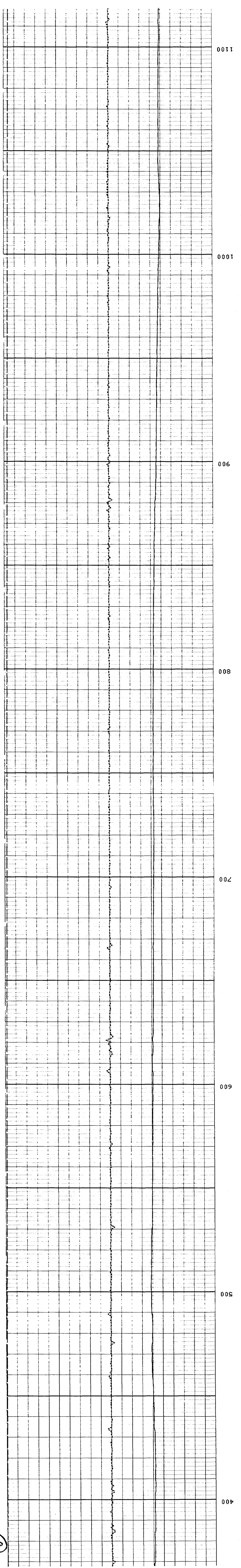
CP 32.2 FILE 9 18-MAY-1990 11:56

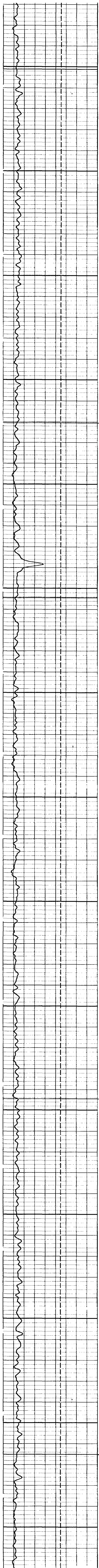
| FILES SPLICED | | SPLICE DEPTH | |
|---------------|--------|--------------|--------|
| 8 TO 7 | | 89.5 F | |
| TEMP<DEGF> | 150.00 | TENS<LBF> | 5000.0 |
| GR <GAPI> | 100.00 | DTEM<DF/F> | 0.0 |
| CCL | 1.5000 | | 1.0000 |
| | | TEMP<DEGF> | 70.000 |
| | | | 60.000 |

CP 32.2 FILE 30 18-MAY-1990 21:49
 INPUT FILE(S) 7
 DATA ACQUIRED 18-MAY-1990 10:24



(5)





1200

1300

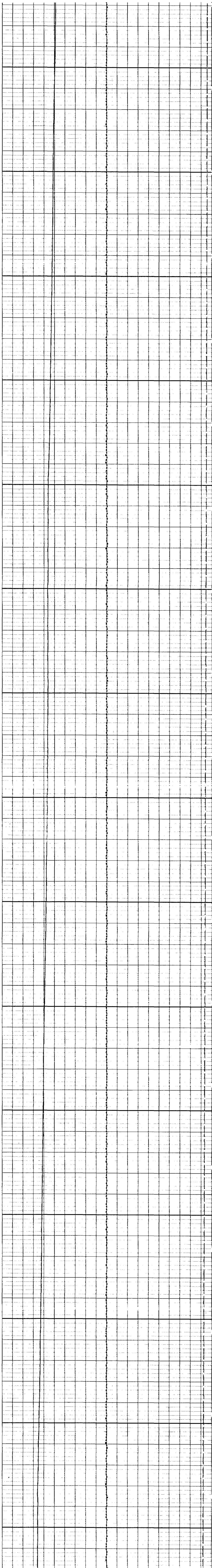
1400

1500

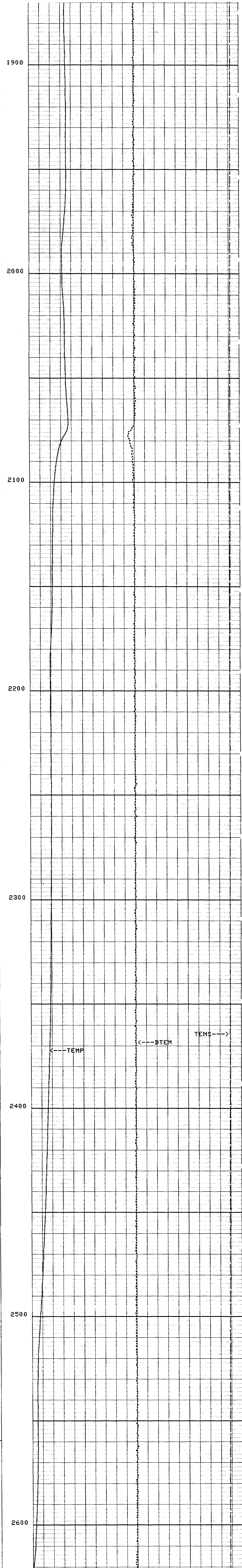
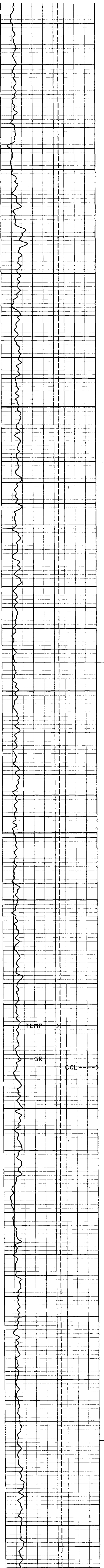
1600

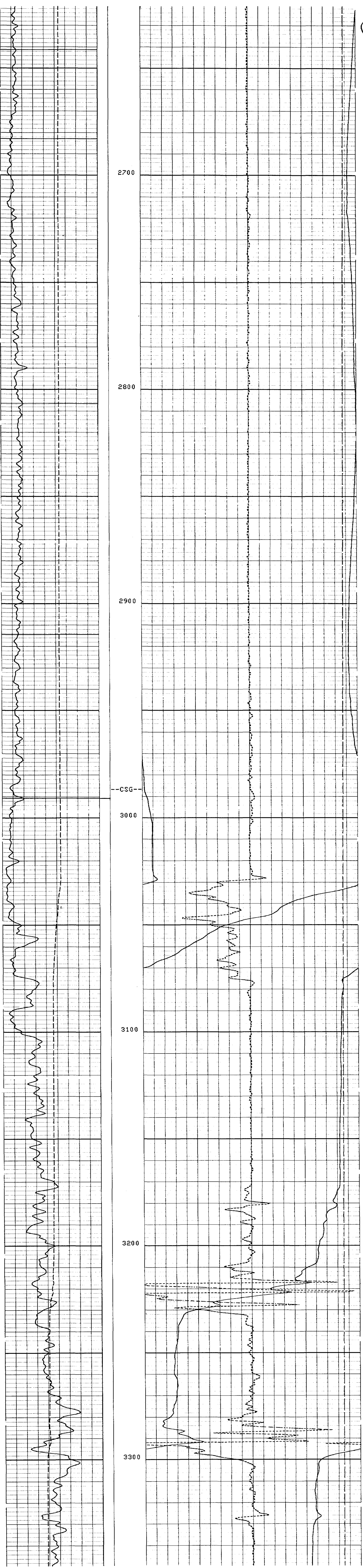
1700

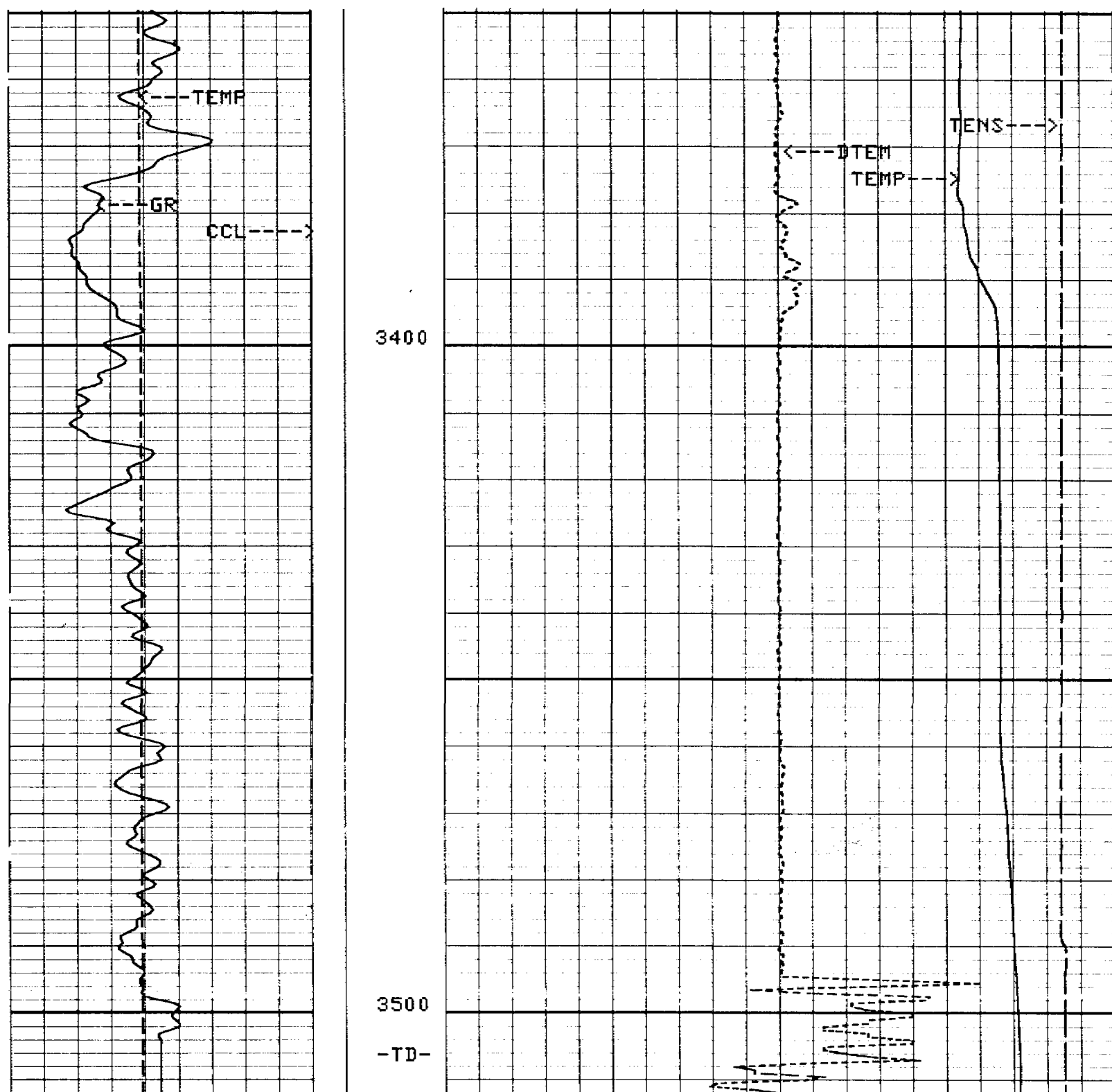
1800



(F)







5"/100"

CP 32.2 FILE 30 18-MAY-1990 21:42
 INPUT FILE(S) DATA ACQUIRED
 8 18-MAY-1990 11:56

| | | | | |
|------------|--------|------------|--------|--------|
| TEMP<DEGF> | 150.00 | TENS<LBF> | 5000.0 | 0.0 |
| GR (GAPI) | 100.00 | DTEM<DF/F> | -1.000 | 1.0000 |
| CCL | 1.5000 | TEMP<DEGF> | 60.000 | 70.000 |

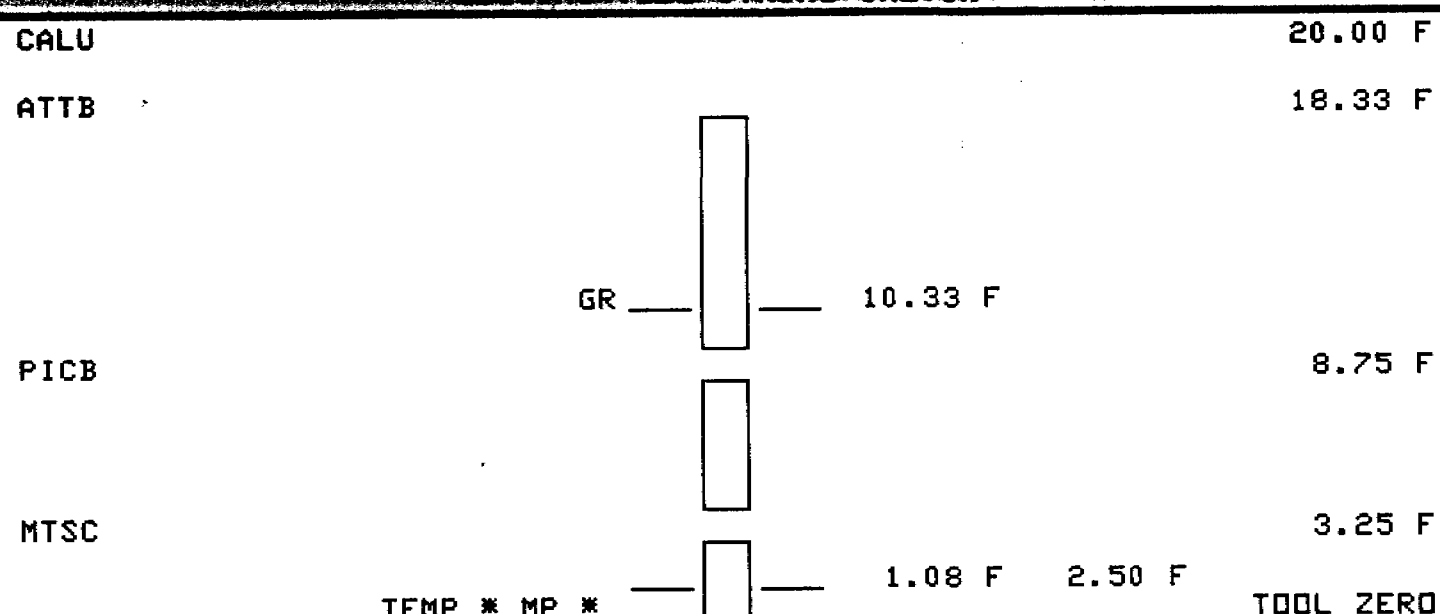
SENSOR MEASURE POINT TO TOOL ZERO

| | | | | | |
|------|------|------|------|------|------|
| GR | 10.3 | FEET | CVEL | 0.0 | FEET |
| MP | 1.1 | FEET | TEMP | 2.5 | FEET |
| EXP3 | 0.0 | FEET | EXT | 0.0 | FEET |
| EXP1 | 0.0 | FEET | EXP2 | 0.0 | FEET |
| CCL | 19.2 | FEET | TENS | 19.2 | FEET |

PARAMETERS

| NAME | VALUE | UNIT | NAME | VALUE | UNIT |
|------|---------|------|------|-------------|------|
| PP | NORM | | DD | 0.0 | F |
| WMUD | 8.34000 | LB/G | SGSN | 0000A-00011 | |
| CDAT | | | FCHD | CSID | |
| PTHR | 10.0000 | F/MN | NTHR | -10.0000 | F/MN |
| TIRA | .500000 | | VPCF | .830000 | |
| DEVI | 0.0 | DEG | FDSH | 0.0 | G/C3 |
| QIDP | FLOW | | TCSH | 0.0 | IN |
| BS | 22.5000 | IN | BHS | CASE | |

LOGGING TOOL STRING SKETCH



TOTAL TOOL STRING LENGTH IS 20.00 F.
 TOTAL TOOL STRING WEIGHT IS 136.00 LB IN AIR.

BEFORE SURVEY CALIBRATION SUMMARY

PERFORMED: 18-MAY-1990 08:04
 PROGRAM FILE: PL (VERSION 32.2 00/00/00 88/11/16)

MTSC ELECTRONICS CALIBRATION SUMMARY

| | MEASURED | | CALIBRATED | | UNITS |
|------|----------|-------|------------|-------|-------|
| | ZERO | PLUS | ZERO | PLUS | |
| TEMP | 52.3 | 160.7 | 0.0 | 200.0 | DEGF |

CP 32.2 FILE 0 18-MAY-1990 08:04



HIGH RESOLUTION TEMPERATURE LOG

