

684773

Schlumberger  
 HIGH RESOLUTION TEMPERATURE LOG



COMPANY: YOUNGQUIST BROTHERS DRILLING  
 WELL: NORTH DISTRICT REGIONAL IM-1  
 FIELD: POMPANO BEACH  
 COUNTY: BROWARD  
 STATE: FLORIDA  
 LOCATION: NORTH BROWARD DISTRICT REGIONAL WASTE WATER TREATMENT PLANT

PERMANENT DATUM: PAD ELEVATIONS--  
 ELEV. OF PERM. DATUM: KBI  
 LOG MEASURED FROM: PAD ABOVE PERM. DATUM DF:  
 DRLG. MEASURED FROM: PAD GL:

DATE: 2 FEB 90  
 RUN NO: SIX

DEPTH-DRILLER: 3010.0 F  
 DEPTH-LOGGER: 3010.0 F  
 BTM. LOG INTERVAL: 3010.0 F  
 TOP LOG INTERVAL: 1950.0 F  
 CASING-DRILLER: 1950.0 F  
 CASING-LOGGER: 1950.0 F  
 CASING: 34"  
 WEIGHT: 12 1/4"  
 BIT SIZE: 3010.0 F  
 DEPTH: 3010.0 F

OTHER SERVICES--  
 DIL/SFL  
 BHC/VDL  
 X-Y CALIPER  
 FIL  
 FLUID R'S  
 FLDM

PROGRAM  
 TAPE NO:  
 30.4  
 SERVICE  
 ORDER NO:  
 519998

TYPE FLUID IN HOLE: SALT WATER  
 DENSITY: 9.00 LB/G

TIME CIRC. STOPPED:  
 TIME LOGGER ON BTM.: 05:30 2-FEB-90

MAX. REC. TEMP: 69.0 DEGF

LOGGING UNIT NO: 8306  
 LOGGING UNIT LOC: FT. MYERS  
 RECORDED BY: S. MILLER  
 WITNESSED BY: J. BRANTLEY

REMARKS:  
 DATA GATHERED LOGGING DOWN.

EQUIPMENT NUMBERS--

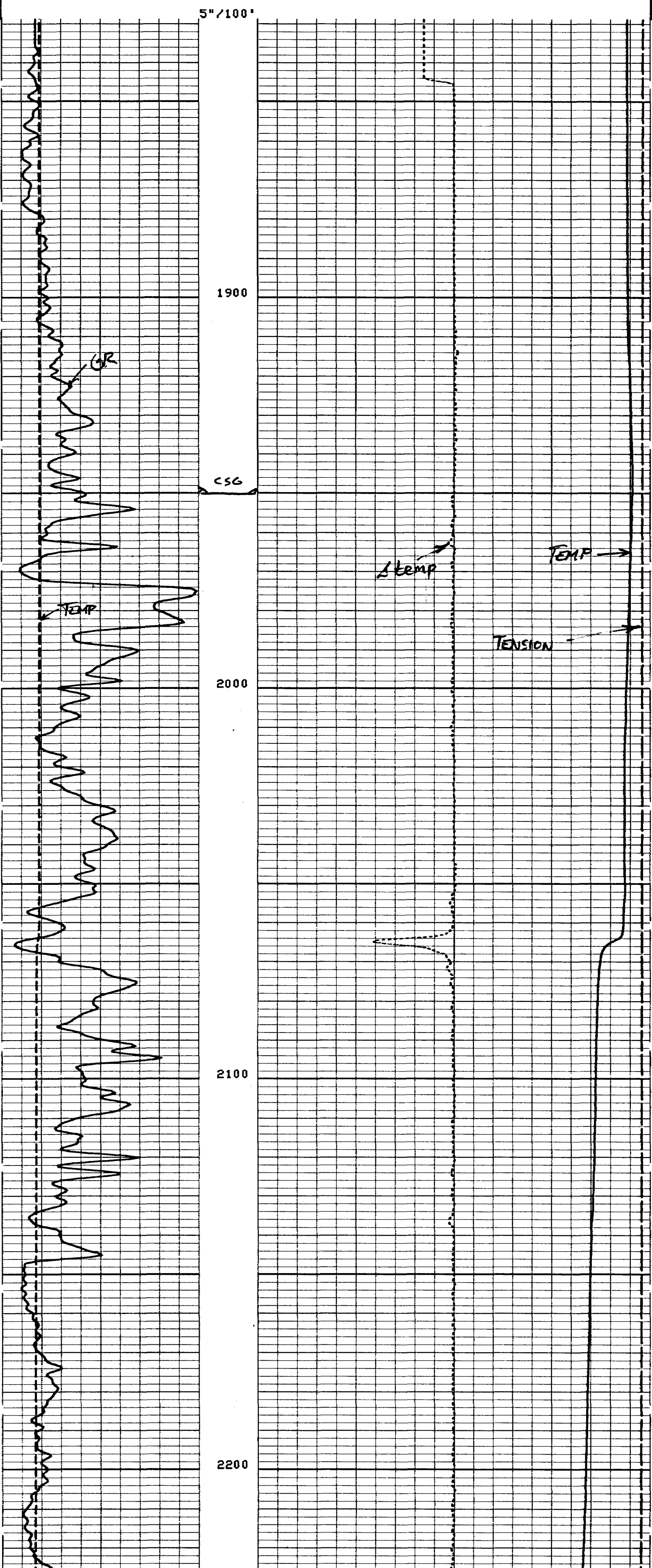
ALL INTERPRETATIONS ARE OPINIONS BASED ON INFERENCES FROM ELECTRICAL OR OTHER MEASUREMENTS AND WE CANNOT, AND DO NOT GUARANTEE THE ACCURACY OR CORRECTNESS OF ANY INTERPRETATIONS, AND WE SHALL NOT, EXCEPT IN THE CASE OF GROSS OR WILLFUL NEGLIGENCE ON OUR PART, BE LIABLE OR RESPONSIBLE FOR ANY LOSS, COSTS, DAMAGES OR EXPENSES INCURRED OR SUSTAINED BY ANYONE RESULTING FROM ANY INTERPRETATION MADE BY ANY OF OUR OFFICERS, AGENTS OR EMPLOYEES. THESE INTERPRETATIONS ARE ALSO SUBJECT TO OUR GENERAL TERMS AND CONDITIONS AS SET OUT IN OUR CURRENT PRICE SCHEDULE.

CP 30.4 FILE 6 02-FEB-90 05:23

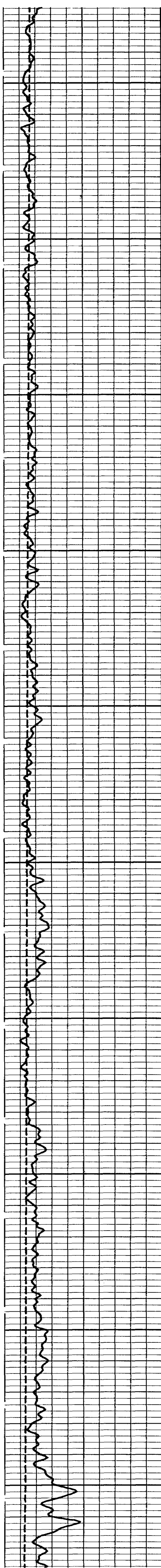
DATA ACQUIRED LOGGING UP

|               |               |
|---------------|---------------|
| TEMP<DEGF>    | TENS<LB>      |
| 50.000 150.00 | 10000. 0.0    |
| GR <GAPI>     | DTEM<DF/E>    |
| 0.0 100.00    | -1.000 1.0000 |
|               | TEMP<DEGF>    |
|               | 50.000 70.000 |

CP 30.4 FILE 6 02-FEB-90 05:23  
 INPUT FILES 4  
 DATA ACQUIRED 02-FEB-90 04:35



(2)



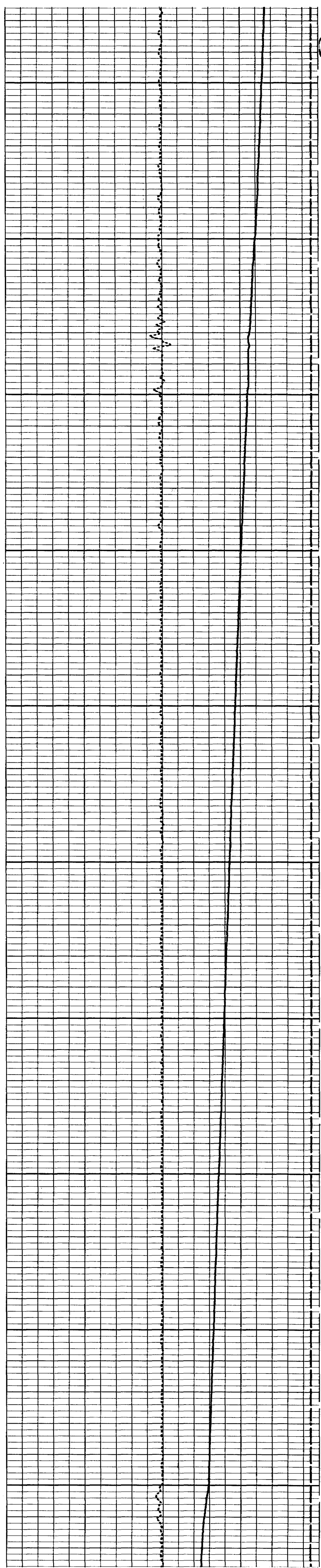
2300

2400

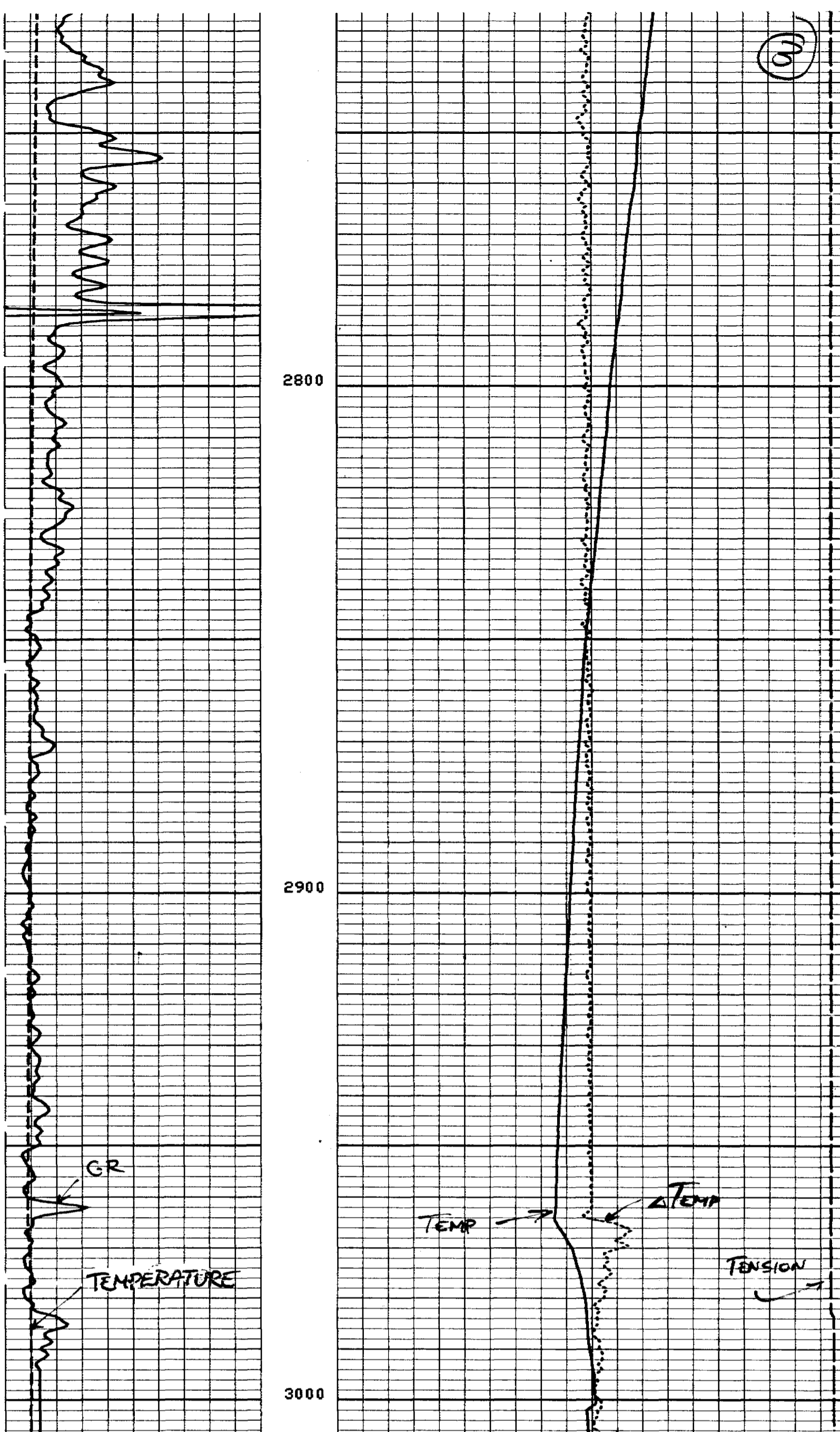
2500

2600

2700



99



5"/100"

CP 30.4                      FILE    6                      02-FEB-90 05:19  
 INPUT FILES                      DATA ACQUIRED  
 4                                      02-FEB-90 05:13

|            |        |            |        |
|------------|--------|------------|--------|
| TEMP(DEGF) |        | TENS(LB)   |        |
| 50.000     | 150.00 | 10000.     | 0.0    |
| GR (GAPI)  |        | DTEM(DF/F) |        |
| 0.0        | 100.00 | -1.000     | 1.0000 |
|            |        | TEMP(DEGF) |        |
|            |        | 50.000     | 70.000 |

SENSOR MEASURE POINT TO TOOL ZERO

|      |      |      |      |      |      |
|------|------|------|------|------|------|
| EXP1 | 0.0  | FEET | GR   | 13.3 | FEET |
| EXP3 | 0.0  | FEET | EXP2 | 0.0  | FEET |
| TENS | 22.2 | FEET | EXT  | 0.0  | FEET |
| CCL  | 22.2 | FEET | CVEL | 1.0  | FEET |
| SVFG | 1.0  | FEET | SPIN | 1.0  | FEET |
| MP   | 4.0  | FEET | TEMP | 5.4  | FEET |
| DTEM | 5.4  | FEET |      |      |      |

PARAMETERS

| NAME | VALUE       | UNIT | NAME | VALUE   | UNIT |
|------|-------------|------|------|---------|------|
| BS   | 12.2500     | IN   | BHS  | CASE    |      |
| QIDP | FLOW        |      | TCSH | 0.0     | IN   |
| VPCF | .830000     |      | FDSH | 0.0     | G/C3 |
| NTHR | -10.0000    | F/MN | TIRA | .500000 |      |
| FCHD | CSID        |      | PTHR | 10.0000 | F/MN |
| SGSN | 0000A-00011 |      | CDAT |         |      |
| DD   | 0.0         | F    | WMUD | 9.00000 | LB/G |
| PP   | NORM        |      |      |         |      |

DATA NOT RECORDED

BEFORE SURVEY CALIBRATION SUMMARY

PERFORMED: 02-FEB-90 04:30  
 PROGRAM FILE: PL (VERSION 30.4 00/00/00 87/11/19)

MTSC ELECTRONICS CALIBRATION SUMMARY

|      | MEASURED |       | CALIBRATED |       | UNITS |
|------|----------|-------|------------|-------|-------|
|      | ZERO     | PLUS  | ZERO       | PLUS  |       |
| TEMP | 52.2     | 160.5 | 0.0        | 200.0 | DEGF  |

ATTB DETECTOR CALIBRATION SUMMARY

|    | MEASURED |     | CALIBRATED | UNITS |
|----|----------|-----|------------|-------|
|    | BKGD     | JIG |            |       |
| GR | 87       | 188 | 135        | GAPI  |



HIGH RESOLUTION TEMPERATURE LOG