

Company: Layne Christensen Company
 Well: TEC DIW-2
 Field: Mulberry
 County: Polk
 State: Florida
 Location: TEC Polk Power Station
 9895 State Road 37 South Mulberry
 State/Prv: Florida
 Company: Layne Christensen Company
 Well: TEC DIW-2
 Field: Mulberry
 County: Polk
 State/Prv: Florida

Operator: XYGRS FCT
 FLOWLINE
 Emission
 K/S
 Log Measured from
 Ground Level
 Date Measured: 15-FEB-2012
 Date Logged: 15-FEB-2012

Run Number: 15
 TMO: 48
 TCO: 18
 FCO: 218
 FCOB: 42
 FCOE: 44
 Production String: 44
 Run Date: 15-FEB-2012

Excavate Record: 15
 Form: 110
 Size: 2200
 TMO: 48
 TCO: 18
 FCO: 218
 FCOB: 42
 FCOE: 44
 Production String: 44
 Run Date: 15-FEB-2012

Revised By: A. Sullivan (MVA)
 S. Williams (MVA)
 J. Szymanski (MVA)
 Form: 110
 Size: 2200
 TMO: 48
 TCO: 18
 FCO: 218
 FCOB: 42
 FCOE: 44
 Production String: 44
 Run Date: 15-FEB-2012

From: 15
 To: 310
 Date: 15-FEB-2012
 Time: 07:15:07
 User: J. Williams
 Title: J. Williams
 Location: TEC DIW-2
 State: FL
 Country: USA

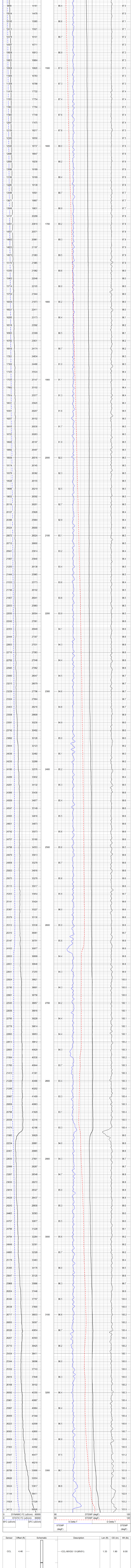
Max. Recorded Temp: 12.25
 Min. Recorded Temp: 82.9

All interpretations are opinions based on inferences from electrical or other measurements and we cannot and do not guarantee the accuracy or correctness of any interpretation, and we shall not, except in the case of gross or willful negligence on our part, be liable or responsible for any loss, costs, damages, or expenses incurred or sustained by anyone resulting from any interpretation made by any of our officers, agents or employees. These interpretations are also subject to our general terms and conditions set out in our current Price Schedule.

Comments:
 STW & DYNAMIC down passes performed. Q=400gpm.
 1250' Cw=7460 uS/cm; 3300' Cw=26790 uS/cm; Dynamic: Cw=11310 uS/cm
FLUID RESISTIVITY CALIBRATION REPORT (Performed: 8-FEB-12 09:45)
 uS/cm CPS
 1,220.7 2810.25
 20,370 1901.11
 149,410 1548.35
TEMPERATURE CALIBRATION REPORT (Performed: 8-FEB-12 10:15)
 DEG-F CPS
 38.5 147.851
 148.8 2690.21
 Drill Pipe Set to 1220' S & 1225' D.

MV Geophysical S/D Merged FCT

Database File: ltcw2b.db
 Dataset Pathname: run6/SDFCT
 Presentation Format: fct4dml
 Dataset Creation: Thu Feb 16 10 22:10 2012
 Charted by: Depth in Feet scaled 1:240



Sensor	Offset (ft)	Schematic	Description	Len (ft)	OD (in)	WT (lb)
CCL	4.46	[Schematic]	CCL-MVGS 1.9 (MV01)	1.33	1.90	8.00
GR#2	1.15	[Schematic]	GR #2 -RTSB (MV01B)	3.33	1.90	10.00
TEMP	0.10	[Schematic]	TEMP-RTS (MV01)	0.46	1.90	2.00

Dataset: ltcw2b.db; field/well/run6/pass4
 Total Length: 5.12 ft
 Total Weight: 20.00 lb
 O.D.: 1.90 in