

C. B. 22-17

Artesian Water Co.  
Permit #167622-W

Ferwick Island ASR Pilot hole

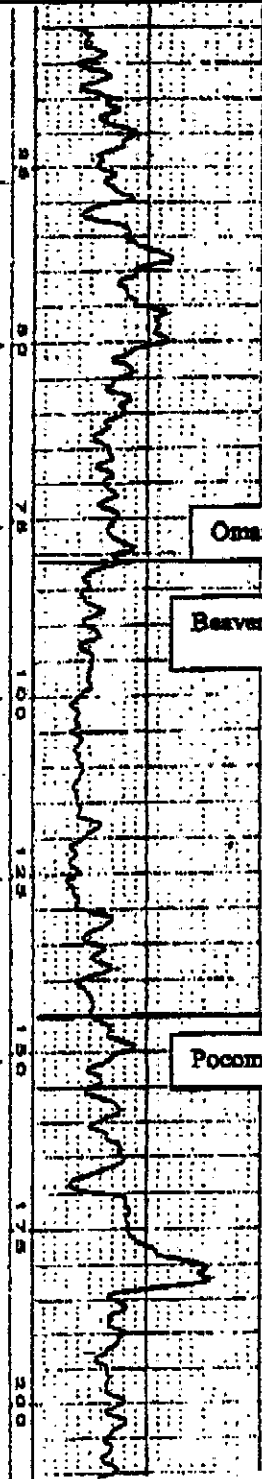
Gamma Scale 0-100 CPS

0-5	SAND, fine to csc., trace silt,	brown	
5-10	SAND, fine to csc., trace shells & silt,	brown	
10-15	SAND, fine with or some silt,	dark brown	
15-20	SAND, fine some or little silt	tan gray	
20-25	SAND, fine some or little silt	gray	
25-30	SAND, fine some or little silt, trace med. sand,	gray	
30-35	SAND, fine with silt, lenses of clayey silt, tan,	gray	
35-40	SILT, some fine, v. fine sand	tan	
40-45	SILT, some fine, v. fine sand	tan	
45-50	SILT, some fine, v. fine sand	tan	
50-55	SILT, some fine to csc sand, trace gravel (flood dep)		
55-60	SAND, f. w/silt, little med. sd. trace grav., tan/olive tan		
60-65	SAND, f. w/silt, little med sand,	tan to olive tan	
65-70	SAND, f. to csc. little to some silt,	buff white	
70-75	SAND, fine some silt	white	
75-80	SAND, fine, some to little silt,	white	
80-85	SAND, fine to csc. trace gravel, little silt	buff	
85-90	SAND, fine to csc. trace gravel, little silt	buff	
90-95	SAND, fine to csc. trace gravel, tr. To little silt	buff	
95-100	SAND, fine to csc, trace gravel, trace silt	buff wh.	
100-105	SAND, fine to csc, trace gravel, trace silt	white/buff	
105-110	SAND, fine to csc, trace gravel, trace silt	white/buff	
110-115	SAND, fine to csc, less gravel, trace silt,	white/buff	
115-120	SAND, fine to csc, rare gravel, trace silt,	white/buff	
120-125	SAND, fine to csc, trace silt,	buff	
125-130	SAND, fine to medium clean	buff	
130-135	SAND fine to medium, trace to little silt	buff	
135-140	SAND fine to medium, trace to little silt	buff	
140-145	SAND fine, trace to rare silt, clean	white	
145-150	SILT trace/little fine to csc sd & gravel (sand from above ?)	gray	
150-155	SAND, fine with/some silt, gray wash qtz sand.		
155-160	SAND, fine, v. fine with silt	gray	
160-165	SAND, fine, v. fine with silt, streaks of gray silt		
165-170	SAND, fine to medium, little to trace silt	olive gray	
170-175	SAND & SILT sand fine to v. fine	dk. olive gray	
175-180	SAND fine v. fine, trace med with silt	gray	
180-185	SAND fine v. fine, trace med with silt	gray	
185-190	SAND fine, with or some silt	gray	
190-195	SAND fine, some silt 2 pieces of med. gravel	gray	
195-200	SAND fine, trace medium sd. little to some silt	gray	
200-205	SAND fine v. fine, with silt	olive gray	
205-210	SAND fine v. fine, with silt	olive gray	
210-215	SAND fine v. fine, with silt	olive gray	

Omar Fm.

Beaverdan Fm.

Pocomoke fm.



Artesian Water Corp.  
Permit #167622-W

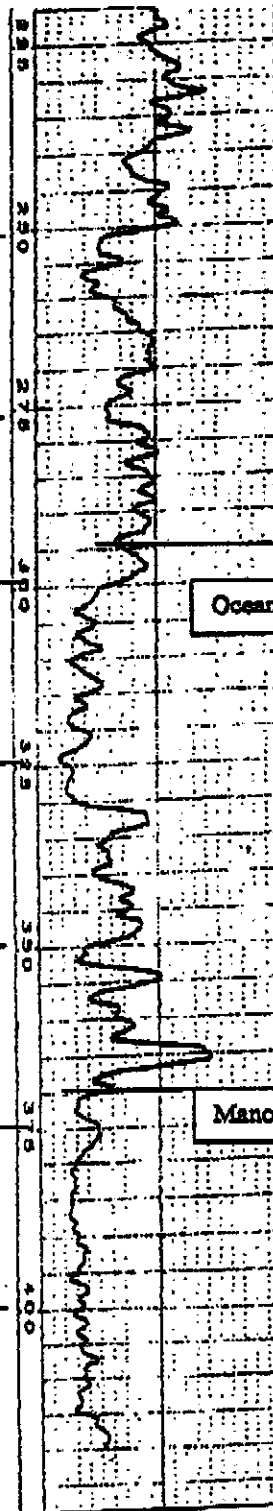
FW-2

B22-17  
Page 3 of 3

**Fenwick Island ASR Pilot Hole**

Gamma Scale 0-100 CPS

215-220 SAND fine v. fine, with silt	olive gray
220-225 SAND fine v. fine, with silt	olive gray
225-230 SAND fine v. fine, with silt	olive gray
230-235 SAND fine v. fine, with silt	olive gray
235-240 SAND fine v. fine, with silt	olive gray
240-245 SAND fine v. fine, some to with silt	olive gray
245-250 SAND fine v. fine, some silt	greenish to olive gray
<hr/>	
250-255 SAND fine v. fine, some silt	greenish to olive gray
255-260 SAND fine v. fine, with silt	gray
260-265 SILT	gray
265-270 SAND & SILT, sd. fine v. fine, (wash is gray qtz sand and rare black rock frags)	olive gray
270-275 SAND & SILT, sd. fine v. fine,	gray
<hr/>	
275-280 SAND & SILT, sd. fine v. fine,	gray
280-285 SAND, fine v. fine, with silt	gray
285-290 SAND & SILT, sd. fine v. fine,	gray
290-295 SAND & SILT, sd. fine v. fine,	tan gray
295-300 SAND & SILT, sd. fine v. fine, wood frag dk gray	
300-305 SAND, fine v. fine, little to trace silt	lt. brn. gray
305-310 SAND, fine v. f., little to trace silt/mica	lt. brn. gray
310-315 SAND, fine v. fine, trace silt	lt. brown gray
315-320 SAND, fine v. fine, trace silt	lt. brown gray
320-325 SAND, fine v. fine, trace silt (wash all gray qtz sand and black rock frags)	lt. brown gray
<hr/>	
325-330 SAND, fine v. fine, trace silt	lt. brown gray
330-335 SAND, fine v. fine, little to some(?) silt	gray
335-340 SAND, fine v. fine, little to some(?) silt	gray
340-345 SAND, fine v. fine, little to some(?) silt	gray
345-350 SAND, fine v. fine, little to some(?) silt (wash all gray qtz sand and black rock frags)	gray
<hr/>	
350-355 SILT, trace to little fine v. fine sand,	gray
355-360 SILT, trace to little fine v. fine sand,	gray
360-365 SAND, fine v. fine trace to little silt	gray
365-370 SAND, fine trace medium trace to little silt	gray
370-375 SAND, fine to medium rare csc. trace silt (wash all gray qtz sand and black rock frags)	brown
<hr/>	
375-380 SAND, fine to medium rare csc. trace silt	brown
380-385 SAND, fine to med. tr. csc & grav, trace silt (wash gray qtz sand & black rx. frag more abundant)	brown
385-390 SAND, fine to med. tr. csc & grav, trace silt	brown
390-395 SAND, fine to med. tr. csc & grav, trace silt	brown
395-400 SAND, fine to med. tr. csc & grav, trace silt	brown
<hr/>	
400-405 SAND, fine to med, rare wood	grayish brown
405-410 SAND, fine to med. tr. csc & grav, trace silt	gray
410-415 SAND, fine, trace medium, trace silt	gray
415-420 SAND, fine, trace medium, trace silt	gray
420-425 SAND, very clean, fine to csc. WASH??	
425-430 SAND, very clean, driller reports harder drilling silt?	



Ocean City sand

Manokin Fm.