

Artesian Water Co.  
Permit #167753

R. 25-10

### BAY VIEW WELL LOG

Geologist P.M. Demicco- Layne Dual Tube Rig.  
(November, 1999)

0-5' - SAND fine to coarse, trace gravel moist, buff yellow. *Q<sub>sc</sub>?*

5-10' - SAND fine to coarse, trace gravel, moist, buff yellow.

10-15' - SILT and SAND v. fine, tan gray. *Q<sub>o</sub>*

15-20' - SILT and SAND v. fine, tan gray.

20-25' - SILT, gray. *Q<sub>o</sub>*

25-30' - SILT, some to little fine sand, tan. *Q<sub>o</sub>*

30-35' - SILT, with clayey layers, trace sand and fine gravel.

35-40' - SILT, some to little fine sand, gray.

40-45' - SILT, gray with layers of fine brown sand.

45-50' - SILT, with sand, fine to medium, trace gravel, gray. *T<sub>sd</sub>?*

50-55' - SILT, with sand, fine, trace gravel.

55-60' - SILT, with fine to coarse sand, trace gravel, gray. *T<sub>sd</sub>*

60-65' - SAND & GRAVEL, sand fine to coarse gravel up to 1/2 inch, gray, (water). *T<sub>sd</sub>*

65-70' - SILT and SAND fine brown to greenish gray, silt layers brown. *T<sub>sd</sub>*

70-75' - SILT with sand, fine, brown to greenish gray, silt layers brown.

75-80' - SILT and SAND fine to medium, trace gravel, gray.

80-85' - SILT and SAND fine, gray.

85-90' - SILT, with fine sand, gray.

90-95' - SILT, little/some fine sand, gray.

95-100' - SILT, little fine sand, gray.

100-105' - SAND & GRAVEL, sand fine to coarse, fine gravel, gray, (water)

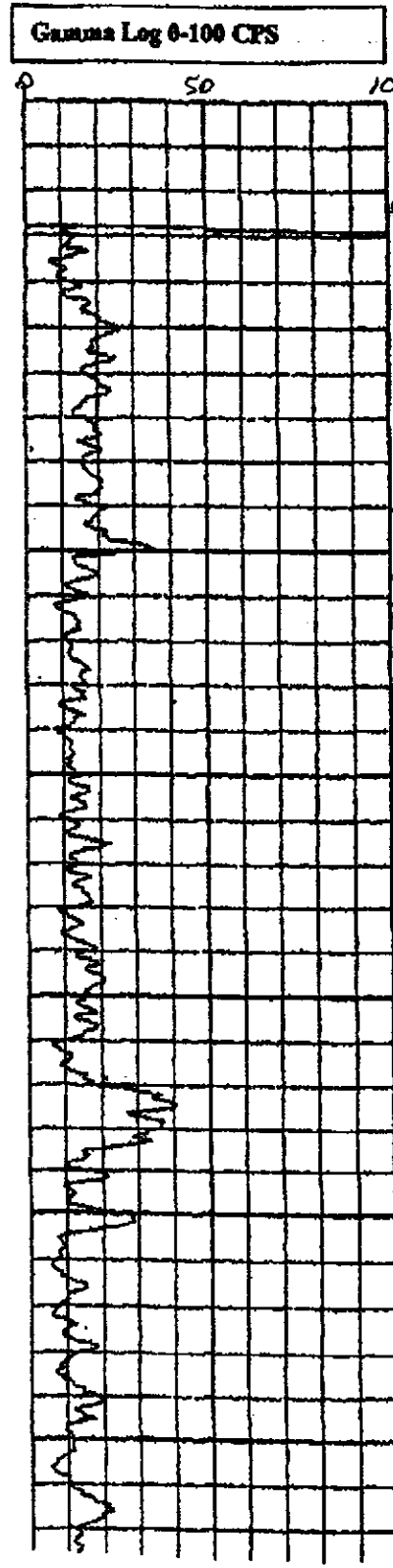
105-110' - SILT and SAND fine, gray.

110-115' - SILT and SAND fine, gray.

115-120' - SILT and SAND fine, gray.

120-125' - SAND fine to medium, little silt, gray.

125-130' - SAND fine to medium, little silt, gray.



0000  
4'  
10' *Q<sub>sc</sub>*  
0020  
*Q<sub>o</sub>*  
0040  
44'  
0060 *T<sub>sd</sub>*  
0080  
84'  
88' *T<sub>sd</sub>*  
0100  
0120

Alt: 6'

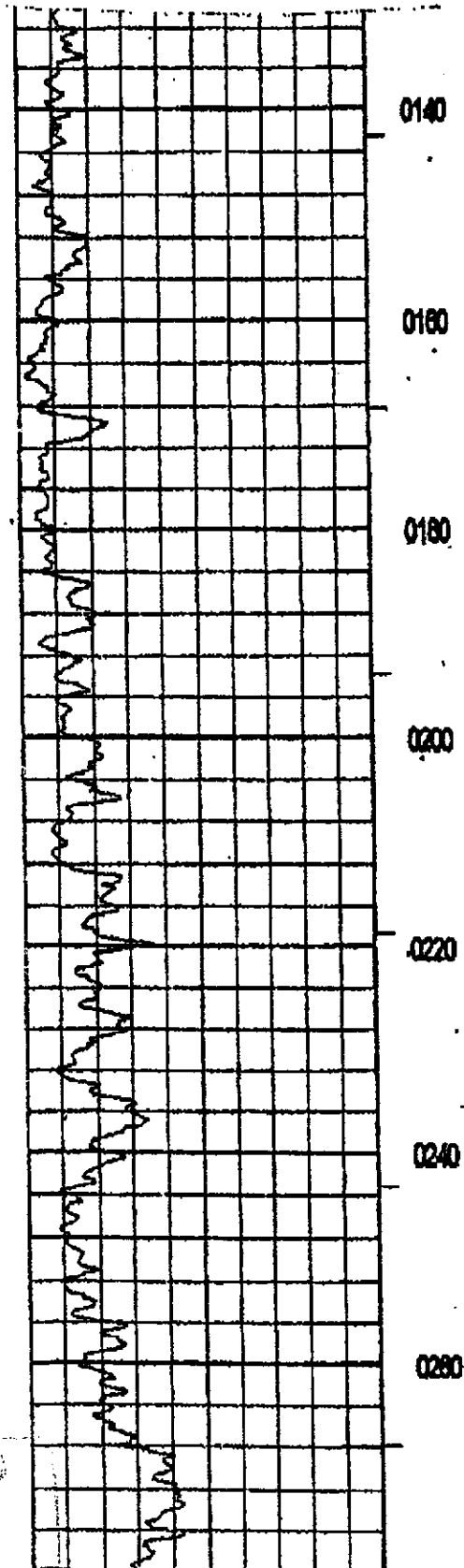
PROCESSED  
WATER SUPPLY

Artesian Water Co.  
Permit #167753

R125-10

### BAYVIEW WELL LOG (Continued)

- 130-135' - SILT and SAND, fine to medium, gray.
- 135-140' - SILT and SAND, fine to medium, trace gravel, gray.
- 140-145' - SAND, fine to medium, organic rich, Black.
- 145-150' - SAND fine to v. fine, with Silt, gray.
- 150-155' - SAND fine to medium, gray.
- 155-160' - SAND & GRAVEL, sand fine to medium, trace coarse, trace silt (water).
- 160-165' - SAND fine to medium, trace coarse, trace silt, gray.
- 165-170' - SILT and SAND fine, gray.
- 170-175' - SILT and SAND, fine, gray.
- 175-180' - SILT and SAND, fine, gray.
- 180-185' - SILT and SAND, fine, gray.
- 185-190' - SILT, some/little clay, gray.
- 190-195' - SILT, some/little clay, gray.
- 195-200' - SILT, some/little clay, gray.
- 200-205' - SILT and SAND, fine to v fine, gray.
- 205-210' - SILT and SAND, fine, gray.
- 210-215' - SILT and SAND, fine, gray.
- 215-220' - SILT, little/some (?) clay, trace shell fragment, brownish gray.
- 220-225' - SILT, little (?) clay, brownish gray.
- 225-230' - SILT, trace/little (?) clay, brownish gray.
- 230-235' - SILT, trace/little (?) clay, trace shell fragment, silvery gray.
- 235-240' - SILT, same as above.
- 240-245' - SILT trace/little (?) clay, trace to little shell fragments, silvery gray.
- 245-250' - SILT, trace (?) clay trace shell fragment, silvery gray.
- 250-255' - SILT, trace (?) clay, rare shell fragment, dark gray.
- 255-260' - SILT, sample missing
- 260-265' - SILT, sample missing
- 265-270' - SILT, sample missing
- 270-275' - SILT and CLAY sample missing
- 275-280' - SILT, some/little (?) clay, silver gray.



RECEIVED  
ARTESIAN WATER SYSTEM

Artesian Water Co.  
Permit #167753

Ri 25-10

### BAYVIEW WELL LOG

(Continued)

280-285' - SILT, some/little (?) clay, silvery gray.

285-290' - SILT, little (?) clay, dark gray.

290-295' - SILT, light to silvery gray.

295-300' - SILT, light gray.

300-305' - SILT, little (?) clay, grayish brown.

305-310' - SAND fine, trace medium sd., trace silt, medium dark gray.

310-315' - SAND fine, trace medium sd., trace silt, gray.

315-320' - SAND fine to medium, trace silt, dark gray.

320-325' - SAND fine to medium, trace silt, light brownish gray.

325-330' - SAND same as above.

330-335' - SAND fine to medium, trace silt, dark gray.

335-340' - SAND fine to medium, trace coarse sand, trace lignite, trace silt, med. dark gray.

340-345' - SAND fine, trace medium sd., trace silt, light gray.

345-350' - SAND fine, trace medium sd., trace to little (?) silt, light gray.

350-355' - SAND fine, trace medium sand, trace silt, light gray.

355-360' - SAND same as above.

360-365' - SAND fine to medium, trace (rare) coarse sd., trace silt, dark gray.

365-370' - SAND fine to medium, trace coarse sd., rare gravel, trace silt, dark gray.

370-375' - SAND fine to medium, trace silt, gray.

375-380' - SAND same as above.

380-385' - SAND fine to medium, trace coarse sd., trace silt, very dark gray.

385-390' - SAND fine to medium, tr. coarse sd., trace gravel, trace silt, gray

390-395' - SAND fine to medium, trace silt, gray.

395-400' - SAND fine to medium, trace coarse sd., trace silt, light gray.

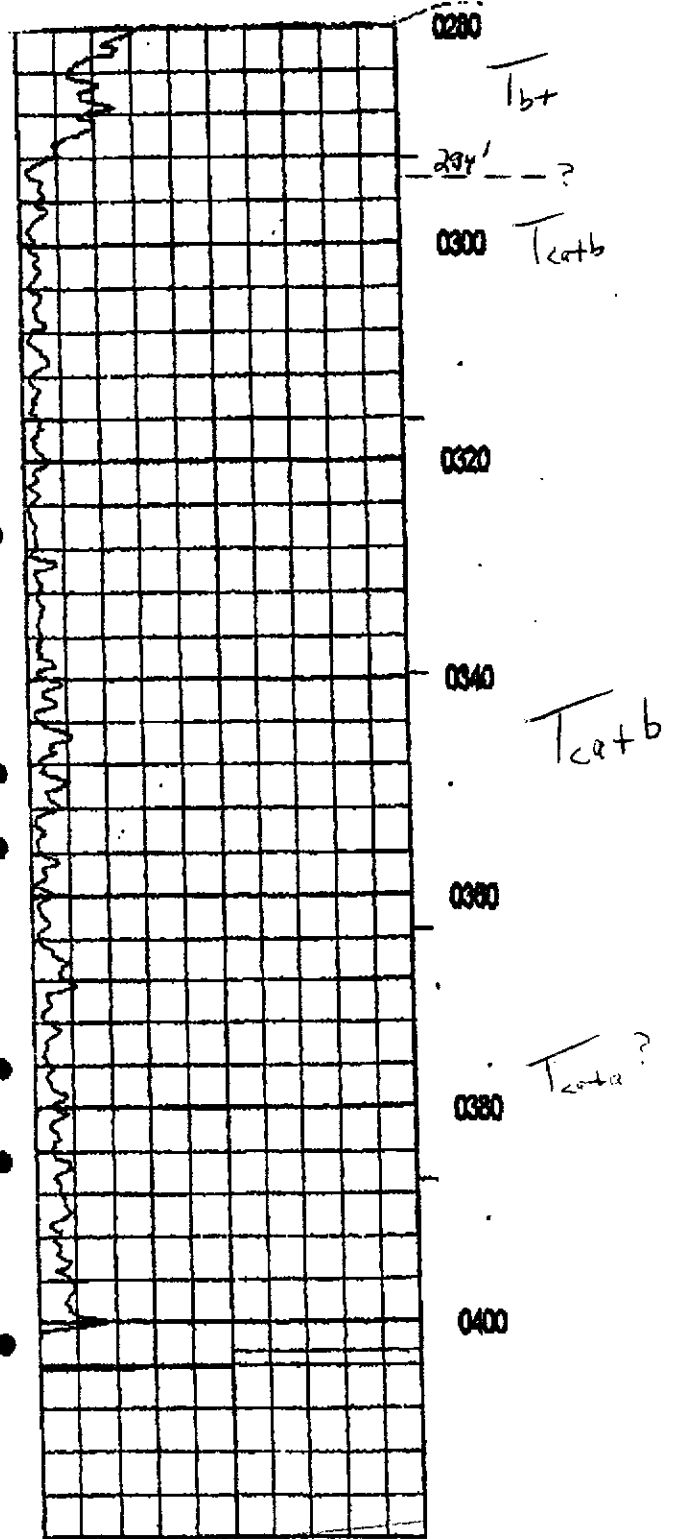
400-405' - SAND fine to medium, trace silt, light gray.

405-410' - SAND fine, trace medium sd., gray

410-415' - SAND fine to medium, trace silt, light gray.

415-420' - SAND same as above.

Sieve Analysis



RECEIVED  
WATER SUPPLY