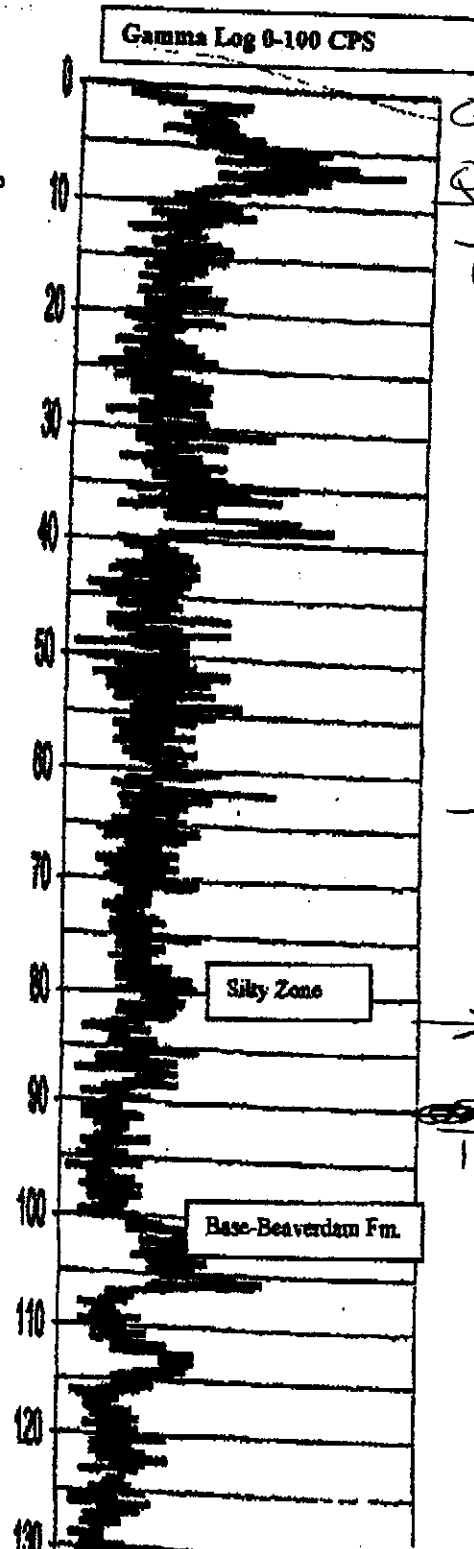


Artesian Water Co.
Permit #167821-W

ASHLEY MANOR WELL LOG

Geologist P.M. Demicco-Layne Dual Tube Rig.
(October, 1999)

- 0-5' - SILT and SAND, fine to v. fine, olive to dark gray layers, organic rich, *Qcs?*
- 5-10' - SILT with fine to v. fine sand, tan gray getting lighter with depth, white silt layers. *Qo*
- 10-15' - SAND fine with silt, rare med. sd. tan with one piece of white silt. *tan*
- 15-20' - SAND fine to medium, little silt, tr. csc. sd., buff tan. *buff*
- 20-25' - SAND fine to coarse, some gravel, trace silt, buff.
- 25-30' - SAND fine to medium, tr. csc. sd., trace silt, buff white.
- 30-35' - SAND fine to medium, tr. to little silt, buff white. (Color change @ 36-37')
- 35-40' - SAND fine to v. fine, with or some silt with silt balls, yellowish orange.
- 40-45' - SAND fine to coarse with fine gravel, rare/tr. silt, buff.
- 45-50' - SAND fine to coarse, rare fine gravel, trace silt, yellowish orange.
- 50-55' - SAND fine to medium, uniform, trace silt, yellowish buff.
- 55-60' - SAND fine to medium, tr. csc. sd., and gravel, tr. silt, yellowish buff.
- 60-65' - SAND fine to medium, rare gravel, tr. to little silt, yellowish buff.
- 65-70' - SAND fine to coarse, rare gravel, clean, tr. to rare silt, buff.
- 70-75' - SAND fine to coarse, some/with gravel, clean, rare silt, buff.
- 75-80' - SAND fine to medium, rare csc. sd. and gravel, clean, rare silt.
- 80-85' - SAND fine, rare med./csc. sd., trace to little silt color change to lt. gray.
- 85-90' - SAND fine to medium, tr. csc. sd., tr. silt, light gray.
- 90-95' - SAND fine, clean, trace silt yellowish orange.
- 95-100' - SAND fine, clean, trace silt, light gray.
- 100-105' - SILT and SAND v. fine, olive gray.
- 105-110' - SAND fine to v. fine, tr. med. sd., some silt, olive gray.
- 110-115' - SAND fine to v. fine, tr. med. & csc. sd., some to little silt olive gray.
- 115-120' - SAND fine to medium, rare csc. sd., little to tr. silt, dark gray.
- 120-125' - SAND fine to co., rare to tr. gravel, little to trace silt, gray.
- 125-130' - SAND fine to medium, rare csc. sd., trace silt, clean, light gray to white.



Qcs?
Qo → *very thin*
9' contact
Tbd

Tbd
→ *83' contact*

1bt

B:23-09
Alt: 9'

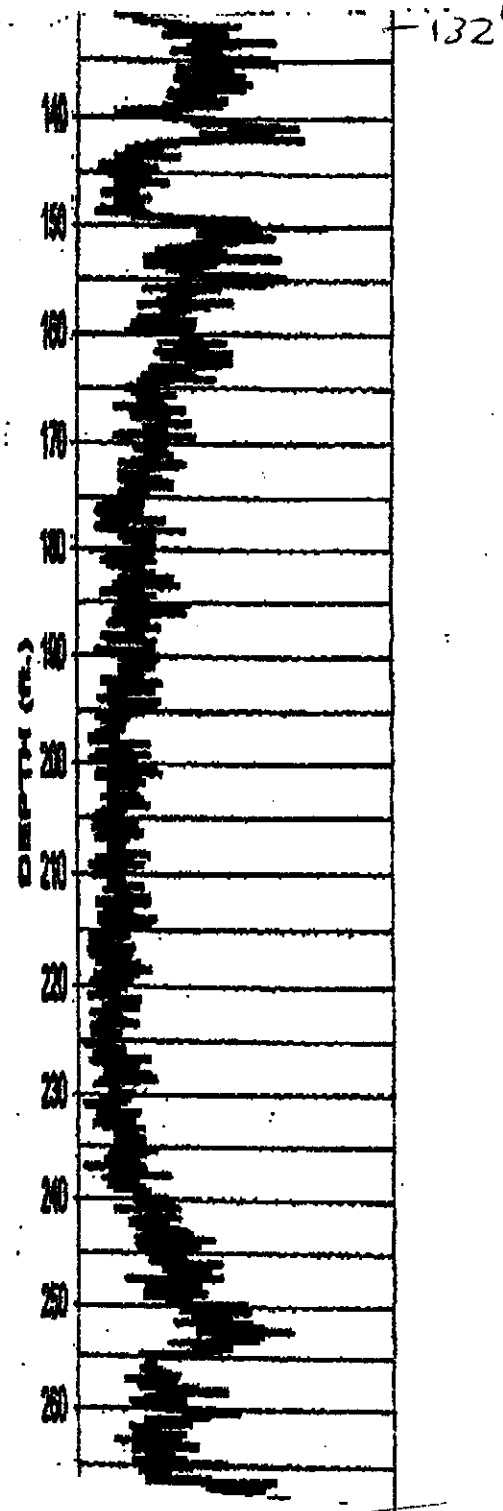
RECEIVED
ARTESIAN
WATER SUPPLY

Artesian Water Co.
Permit #167821-W

ASHLEY MANOR WELL LOG

(Continued)

- 130-135' - SILT and SAND, fine to v. fine, gray.
- 135-140' - SILT with some clay, streaks of sandy silt, gray.
- 140-145' - SILT little/some fine-v. fine sand, little clay varying shades of gray from olive to silver gray.
- 145-150' - SAND fine to v. fine, tr. med. sd., little silt olive to greenish gray.
- 150-155' - SILT and SAND, fine, tr. med. sd., rare csc. sd. and gravel, olive gray.
- 155-160' - SILT and SAND fine, to v. fine, gray brown.
- 160-165' - SILT and SAND fine, to v. fine, gray brown.
- 165-170' - SAND fine to v. fine, with silt grayish brown.
- 170-175' - SAND fine to v. fine, tr. med. sd., some silt, grayish brown.
- 175-180' - SAND fine rare med. sd., some to little silt, brownish/greenish gray.
- 180-185' - SAND fine to v. fine, trace silt gray.
- 185-190' - SAND fine to v. fine, tr. to little silt, brownish gray.
- 190-195' - SAND fine, tr. to little med. sd., trace silt, gray.
- 195-200' - SAND fine to medium, tr. csc. sd., trace silt, gray.
- 200-205' - SAND fine to medium, tr. csc. sd. and gravel trace-rare silt, clean, gray.
- 205-210' - SAND fine to medium, tr. csc. sd. and gravel, clean, rare-trace silt, gray.
- 210-215' - SAND as above, light gray.
- 215-220' - SAND as above, light gray.
- 220-225' - SAND fine to coarse, rare gravel, trace silt, gray.
- 225-230' - SAND fine to coarse, trace fine gravel, trace silt, gray.
- 230-235' - SAND fine to medium, trace silt, light gray.
- 235-240' - SAND fine to v. fine, little silt, gray.
- 240-245' - SILT and SAND fine to v. fine, dark gray.
- 245-250' - SILT, little/some fine sand, little clay (clay balls) medium to dark gray.
- 250-255' - SILT, little fine sand, little clay, gray.
- 255-260' - SILT, little to some v. fine to fine sand, trace clay, gray.
- 260-265' - SILT and SAND fine to v. fine, olive gray.
- 265-270' - SILT and SAND fine to v. fine, light gray "clay" streaks of pure olive gray silt.



Asian Water Co.
Permit #167821-W

ASHLEY MANOR WELL LOG (Continued)

275-280' - SILT, little fine to v. fine sand, olive gray.

280-285' - SAND fine to v. fine, little silt, gray.

285-290' - SAND fine to v. fine, little silt, gray.

290-295' - SAND fine to v. fine, little silt, gray.

295-300' - SAND fine to v. fine, trace silt, gray.

300-305' - SAND fine to v. fine, trace med. sd., trace silt, gray.

305-310' - SAND fine to medium, trace silt, gray.

310-315' - SAND fine to coarse, trace gravel, trace/rare silt, gray.

315-320' - SAND fine to medium, trace csc. sand, trace silt, gray.

320-325' - SAND fine to medium, trace silt, gray to medium dark gray.

325-330' - SAND fine to medium, trace silt, gray.

330-335' - SAND fine to medium, trace silt, gray.

335-340' - SAND fine to medium, trace silt, gray.

340-345' - SAND fine, trace to little medium sd., trace silt, gray.

345-350' - SAND fine to v. fine, trace-little medium sand, trace silt, gray.

350-355' - SAND fine, trace-little medium sand, trace silt, gray.

355-360' - SAND fine, trace-little medium sand, trace silt, gray.

360-365' - SAND fine to v. fine, trace med. sd., trace(little?) silt, gray.

365-370' - SAND fine to v. fine, little silt, medium dark gray.

370-375' - SAND fine, trace medium sand, trace silt, gray.

375-380' - SAND fine, trace medium sand, trace silt, gray.

→ 380-385' - SAND very fine, trace silt, exceptionally uniform very fine sand, gray. *Tcat*

385-390' - SAND, as above.

390-395' - SAND, as above.

395-400' - SAND, as above.

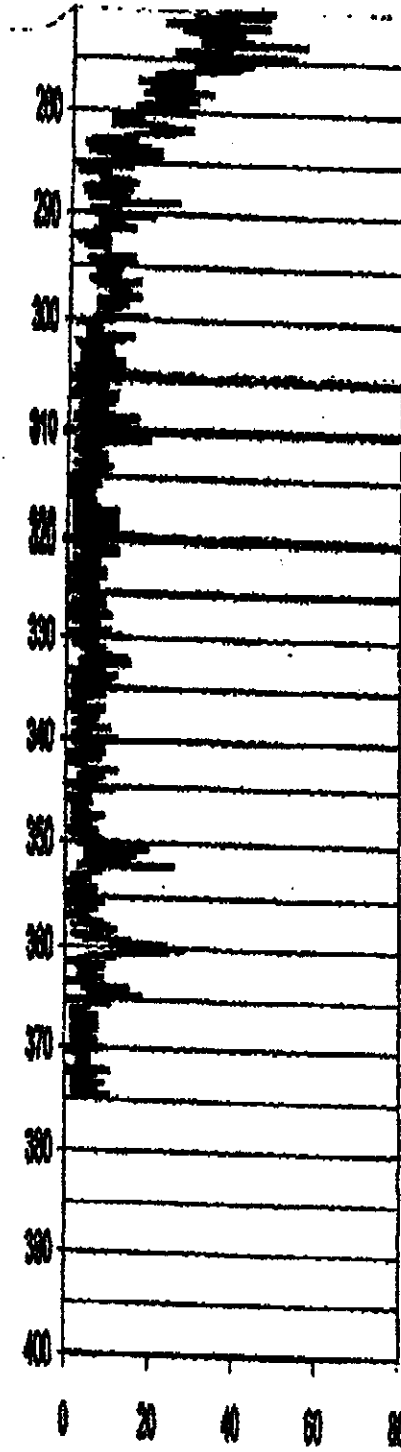
Tcata → 400-405' - SAND, v. fine, some silt, med. dr. gray

405-410' - SAND, v. fine, some silt, med. dr. gray.

410-415' - SAND, v. fine, some silt, med. dr. gray.

415-420' - SILT and SAND v. fine, med. dr. gray.

420-440' (Total Depth) same as above, with slightly increasing amounts of silt and clay with depth.



counts/second

RECEIVED
 FEB 25 1999
 WATER SUPPLY