

DGSID

R114-03

LOCALID

JMD-OCAD-09-79

Start Depth

0

Stop Depth

Coring Start Time

Coring Stop Time

Drilling Notes:

Descr. in lab

Coring cut + bases

Date

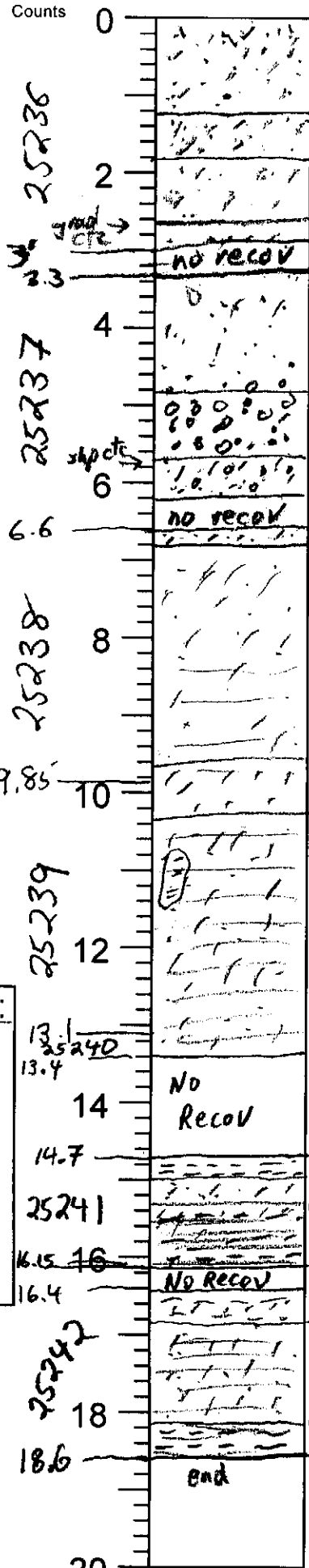
1/13/11

Described by

KWR

Blow Counts

Feet



Core Description

0 SAND: f-vf, m cn, silty slty; lt gry 2.5Y 7/2; org frag cn 0-1.55; few drs

1.25 SAND: vf; mod slty; lt brnsh gry 2.5Y 6/2; mottled root disturb?

1.8 SAND: f-vf; silty-mod slty; pale yl 2.5Y 2.5 7/3

2.55 SAND: f-vf; silty-mod slty; hard; yellow 2.5Y 7/6; gid dn to f-vf; bu 4.5; crs cn; gran v sm pl cn 4.7-4.8; or (burrows?) mottles 3.4-3.8 (round-oval)

4.8 SAND: crs-v crs, silty slty; v pale brn 10YR 7/3; abd sm pl to 5.1; few below

5.75 SAND: vf-f; m-v sm pl cn; mod slty

6.8 as above

8 SILT: mod sdy; vf; wh 2.5Y 8/1 w/ pale yl streaks (distb by coring); few-cn mica; ohm cn; ohm cn-abd + ohm lam cn b/l 8.4; has wh powdery residue; hard

9.65 SILT: silty sdy; wh 2.5Y 8/1; hard

10.3 SILT: silty-mod sdy; wh, mica cn; ohm cn; lt gry slty cly lam (distrupted by cbring) 10.8; wh powdery residue; lam w/ ohm + mica

13.4 No Recov

14.7 CLAY: silty; finely lam w/ silt; pale yl-lt gry

15 SILT as 10.3-13.4

16.3 SILT as above lam w/ silty clay; lt gry + yl banded

16.4 as above

16.4 SILT: silty-mod sdy as 10.3-13.4; lam outlined by ohm + mica

18.15 CLAY: silty; olv yl 2.5Y 6/6; few v thin silt lam

20 end