

DGSID

Q41-20

LOCALID

BEB-6

Start Depth

0

Stop Depth

20

Coring

Start Time

Coring

Stop Time

Blow  
Counts

Feet

Core Description

sketch  
sketch 1.25

SAND; vf; silty; vdk gry 2.5Y 3/1; org-rich

1.1 SAND; vf; m-cn; y/ 3.5Y 7/6  
1.2 SAND; silty; silty sd; 1.5 y/bn 2.5Y 6/3 sd 7% w/d  
1.3 SAND; vf; loose pale y/ 2.5Y 8/5; clean  
1.4 SAND; vf; grad fm; mod silty lam (2-3); pale y/  
1.5 faint ft lam; clean

1.75 as above; silty silty 1t y/bn 2.5Y 6/5

1.6 sand as above; 6-6.5 mod silty  
1.7 SILT; silty sd; vf; dk olv brn 2.5Y 3/3 org-rich  
1.8 SAND; m-f; few-cn crs. 1t y/bn 2.5Y 6/5  
1.9 faint ft lam (m-f v h-crs)

1.9 SAND; m-crs grad h crs-m; ppl lam @ base  
1t y/bn brn  
2 SAND; vf; silty silty; mica cn; 1t olv brn 2.5Y 5/5  
ohm cn

1.8 as above; few mica; ohm lam cr-abd

1.5 as above

1.8 as above; ohm lam abd

1.6 as above; grad to @ .6  
SAND f-c; 1t olv brn 2.5Y 5/3, few grain-v sw (abd)

1.8 SAND; vf to SILT; more compact than above  
1.55 olive gry 5Y 4/2; mica cn-abd; ohm lam cn-abd

as above

as above

1.75

Drilling Notes:

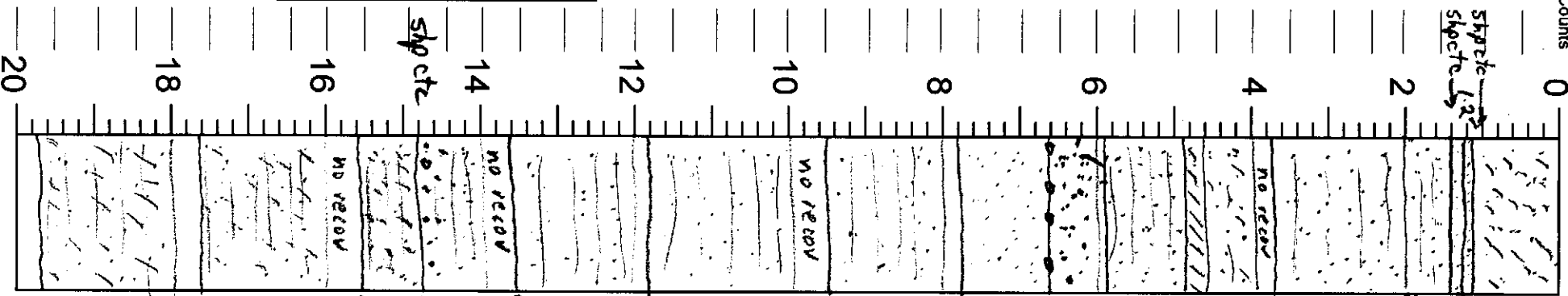
Descr. in lab

Date

10/10/23

Described by

KWR



Blow  
Counts

Core Description

DGSID

Q-41-20

LOCALID

BER-6

Start Depth

20

Stop Depth

40

Coring  
Start Time

0800

Coring  
Stop Time

0800 ~~shp cte~~

Drilling Notes:

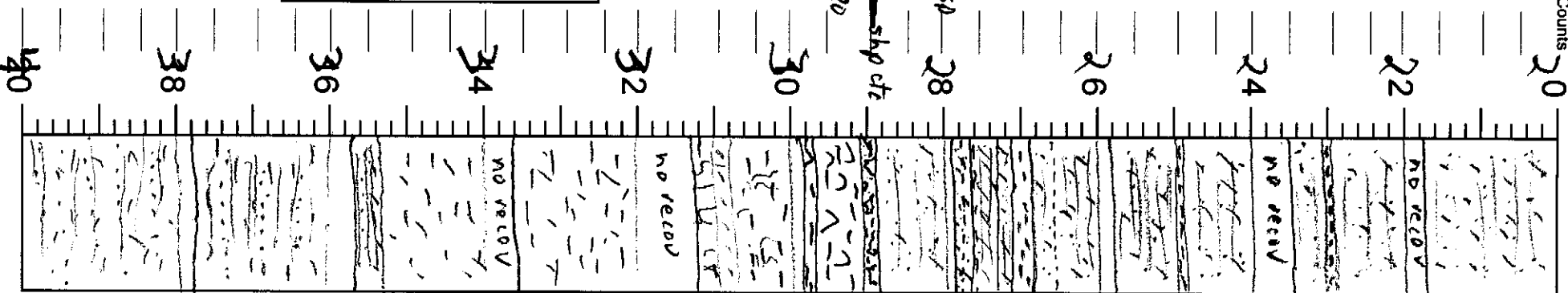
Desur in  
lab.

Date

10/10/22

Described by

RWR



20 SAND v.f. to SILT. compact, olv gry - lt olv gry  
5/2-6/R, mica en, ohm lam en - abd

22 1.75 as above; silty clay lam (dk olv gry 5/2-3/2). 9.5-10.5

24 1.5 as above; dk olv gry silty clay lam. 8.5-.9

26 1.85 SAND v.f. silty, lt olv gry 5/6/2; abd ohm lam  
mica en  
as above; thinly lam @ .6

28 1.85 CLAY: dk olv gry 3/2; silty silty  
CLAY: lt olv gry mica en; ohm lam en  
SAND v.f. olv gry 5/6/2; finely lam (sub-sd ssd silt) clay 1.5-1.8  
SAND v.f. silty; finely lam; clay lam 1.7-1.8  
SAND v.f. silty silty; mica en; few f; lt olv gry  
5/6/2

30 1.6 CLAY, silty; dk gunsh gry 1 CLAY 10 GR 3/1; knob w/ silty  
CLAY, silty; dk gunsh gry; w/ abd chalky Cassastrea sh1  
1.7 clay; silty; dk gunsh gry; few sh1  
CLAY, silty; dk gunsh gry. clay to SILT. clay. 8-1.1  
abd silt (lt gunsh gry) burrows

32 1.3 CLAY, silty; dk gunsh gry to gunsh gry 1 CLAY 10 GR 5/1

34 1.6 no rec'd  
as above gunsh gry

36 1.35 as above finely lam w/ silt-v f sil  
1.7 as above color grade to  
CLAY, silty; v dk gry 5/3/1; w/ abd lam v f sd-silt  
(lt gry); few blk lam (organics or charcoal?)

38 1.8 as above; blk lam en

40 2.0

Blow  
Counts Feet

DGSID

QJ41-20

LOCALID

BBB-6

Start Depth

40

Stop Depth

58

Coring  
Start Time

Coring  
Stop Time

Drilling Notes:

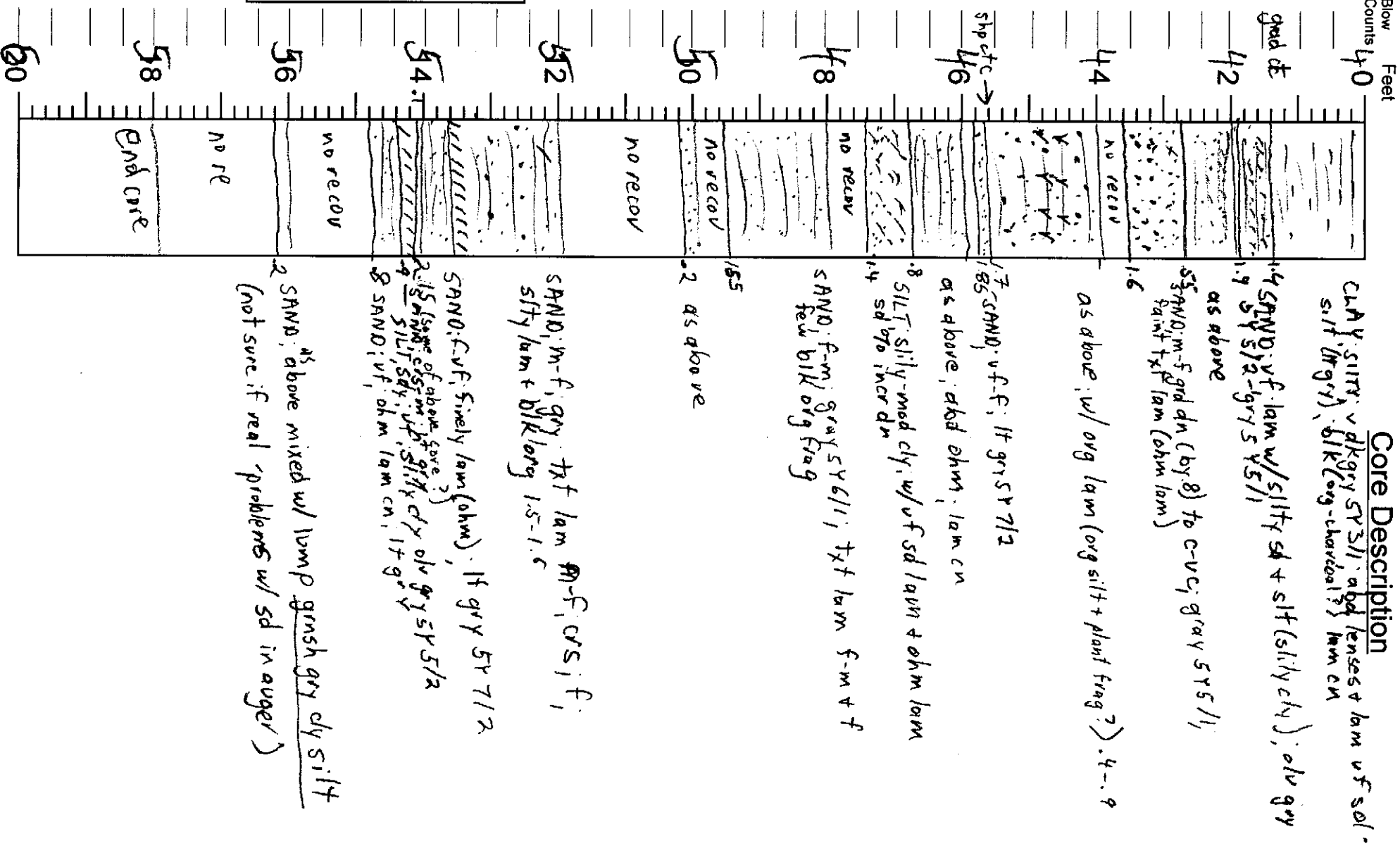
Descr. in lab.

Date

10/10/22

Described by

KWR



Core Description

CLAY, SILTY, v dk gray silt, abd lenses + lam of sol. silt (frag), blk (org-charcoal?) lam on

1.4 SAND: v-f. lam w/silty sd + silt (silty clay), blk gray silt (frag), blk (org-charcoal?) lam on

1.9 5Y5/2-gray silt

as above

1.6 5.5 SAND: m-f grad dn (by 8) to c-v; gray silt, plant frag?

as above, w/ org lam (org silt + plant frag?)

1.7 SAND: v-f-f; lt gr silt

as above; abd ohm, lam on

1.8 SILT: silty-mod clay, w/v f sd lam + ohm lam

1.4 SAND: f-m; gray silt; txt lam f-m + f few blk org frag

1.5 SAND: f-m; gray txt lam f-m + f; silty lam + blk long 1.5-1.6

SAND: f-v-f; finely lam (ohm), lt gray silt

1.5 (some of above core?) SILT: silty, blk (org-charcoal?) lam on

1.8 SAND: v-f; ohm lam on, lt gray

2 SAND: as above mixed w/ lump greenish gray clay silt (not sure if real 'problems w/ sd in auger')