

DGSID

Qj 33-01

LOCALID

JCR-I-2-80

Start Depth

[]

Stop Depth

[]

Coring Start Time

[]

Coring Stop Time

[]

Drilling Notes:

0-.9 Qfs
.9-3.8 Qsi
3.8-12.3 Qsi or Qo
12.3-14.05 rework zone
14.05-18.6 Tbd

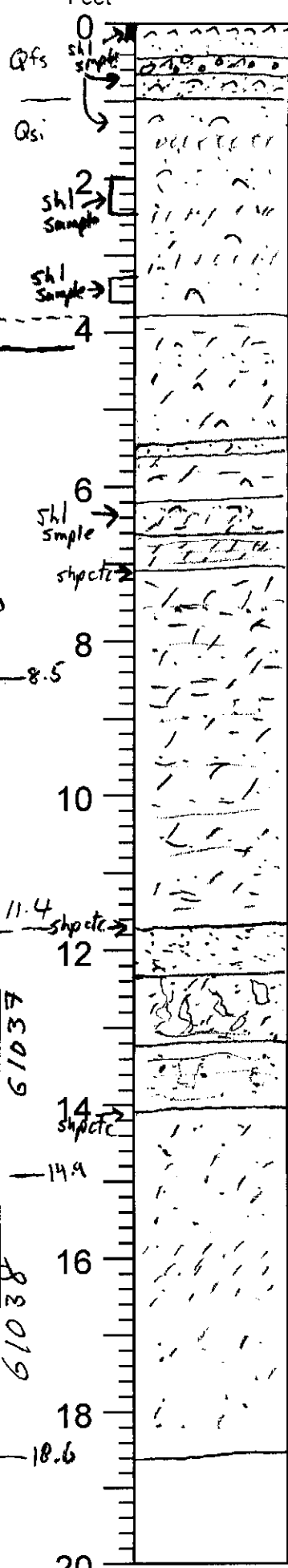
Date

2/15/11

Described by

KWR

Feet



Core Description

SAND, vf, loose; lt gry SY 7/2; shelly 0-0.15 Mulinia
mica cn-ohm cn
.65 as above Gravelly; lt gry chf pbl; shl cn
SAND, vf, loose, lt gry SY 7/2; shelly, Mulinia;
SAND, vf, silty-mod slty; silt in zones (laminar-mod
disturbed; shl cn-Mulinia; 1-2% mica (biotite) abd ohm;
few forams;
SILT, silty-mod cly; silty sdy (in lam?)
gray SY 6/1; v sml shl (juvenile Mulinia?) few;
SAND, vf, loose, pale yl; few shl
SAND, vf, silty slty; abd ohm; mica cn (some biot)
shl cn (Mulinia); few slty lam
SILT, sdy; vf; lt olv gry SY 6/2; v silty cly; lam slty + so
SILT, cly to CLAY, slty; lt gry SY 7/1; few slty sdy filled hor
scat silty sdy silt lam
SAND, f-vf, clean; abd ohm; lt brnsh gry 2.5 SY 6/2;
SAND, vf, silty slty; pale yl 2.5 SY 7/3; hadyl
sulfur crust on outside; few ohm; bioturb (silty +
less silty zones)
Faint slty lam @ base
SAND, f-vf, m cn; lt gry SY 7/2; faintly lam;
some bioturb; few ohm; few rd-stn grains; silty slty
SAND, vf-f; pale yl 2.5 SY 7/3; ohm cn-abd
v silty-silty slty; 15.7-16.5 silty-mod slty;
few vc; has sulfur crust; few rd-stn grains

Shell samples for AAR

- 0-0.2' 61034.1
- 0.6-0.75' 61034.2
- 1'-1.5' 61034.3
- 2-2.5' 61034.4
- 3.3-3.6' 61034.5
- 6.2-6.6' 61035.1