

0914-51



Well Number 17A

Drilling Log

Client NCR Millsboro, Delaware

Project No. 00-4529-10

Well Location North corner of baseball field

Driller/Company Ed Kelley & Calvin Wallace/Delmarva Drilling Co.

Drilling Method Mud rotary Hole Diameter 8 3/4" Date(s) Drilled 12/5/83

Sample Type split spoons Sample Interval 5' No. Samples Retained 11

Surface Elevation 22.96' Casing Top Elevation 24.48' (see) Total Well Depth 60'

Casing Material and Size 4" ID Sch 40 PVC Cased Interval(s) 0 - 50'

Grouting Type Portland Cement Grouted Interval 0 - 44'

Screening Material and Size 4" ID Sch 40 .016" slotted PVC Screened Interval(s) 50 - 60'

Pecking Material and Size Coarse grained silica sand Packed Interval 45 - 60'

Depth to Static Water 16.42' PVC Date 1/5/84 Approx Well Yield 30 gpm

Development Method Compressed air Development Time 2 hours

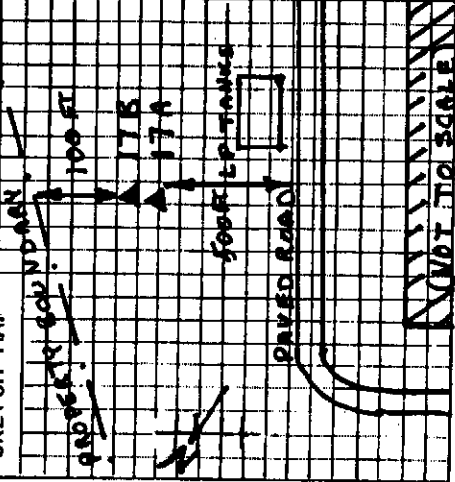
Logged by: Richard E. Sacks

Comments The water used in the drilling process was chlorinated.

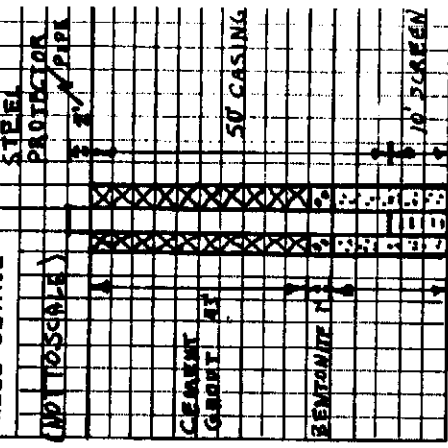
Quik-gel was used after

20'

SKETCH MAP



WELL DETAIL



Depth Scale	Sample	Spoon Blows	Description of Materials
0' - 4.5'	5'	50/6"	Tan, fine to medium grained SAND
4.5' - 8'	10'	48/6"	Tan-grey, sandy CLAY; sand is fine - medium grained.
8' - 19'	15'	95/6"	Tan, fine - medium grained SAND with some coarse sand and fine gravel
19' - 25'	20'	50/12"	70/3"
25' - 35'	25'	50/5"	Tan, slightly clayey, fine - coarse SAND and fine gravel
35' - 49'	30'	48/12"	Tan, medium to coarse grained SAND and fine gravel
	31'	80/10"	Orange-tan, medium - coarse grained, slightly silty SAND and fine gravel
	35'	40/6"	
49' - 50'	40'	78/6"	Orange-tan, medium grained, slightly silty SAND
55' - 99'	45'	NS	Orange-tan, medium - coarse grained, slightly silty SAND
59' - 65'	50'	80/3"	Orange, fine grained GRAVEL with some orange-tan, medium - coarse grained sand
65' - 70'	55'	NS	
	60'	83/6"	Orange-tan, coarse grained SAND
	70'		End of hole

h861/1

wt of casing above ds -1.52