

SAMPLES,  
PHOTOS

NOTED BY

# →

AK

DGS ID De 23-03

DEPTH  
INTERVAL

ft

SYMBOL  
DESCRIPTION

DESCRIPTION, COMMENTS

0-0.5' topsoil

0.5-6.5' or clay w/ root mottles, becomes  
lt gry + slty by 3'

6.5-10' yel gry f-md sd, slty, smcs, cmn pbl  
cht w/ bl gry slty clay intbeds, or f sd  
stringers

10-39' yel gry f-md sd, smcs, sm slt-slty w/  
v numerous yel gry/or/pk/dk gry slty  
clay intbeds (1-5' thick)

39-87' lt gry f-md sd, tr slt, w/ few thin  
dk gry f-vf slty sd intbeds  
80-87' sm cs sd intbeds

87-106' lt yel rnd-cs sd (87-90' gravel?)

106-153' intbed dk gry f-md sd, sl slty-  
v slty, sm gravel, and dk gry slty clay

153-168' yel gry md-cs sd

168-214' dk gry f-vf sd, ↑ slt w/ depth  
lots of lignite  
GAM shows clay by 197'

56-59' tighter

63-67' tight

80-87' crunchy

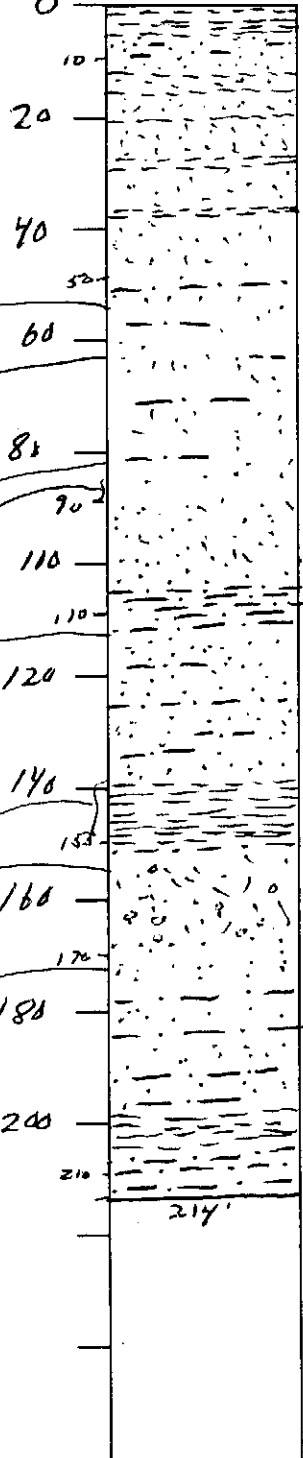
87-90' huck-a-bucks +  
took cuttings

114' tighter

139-149' tight

155' took cuttings

171' tightening up



WATER-LEVEL DATA

Date 06-22-05

Water Level 6.5

Device Used

A	M	O	R	S	<u>T</u>	W
air line	m-scope	other	reported	static level	tape down	water-level recorder