

Core Description

Feet

DGSID

Ph22-39

LOCALID

Sussex SWF Core

Start Depth

0

Stop Depth

Coring Start Time

8:30

Coring Stop Time

Drilling Notes

Date

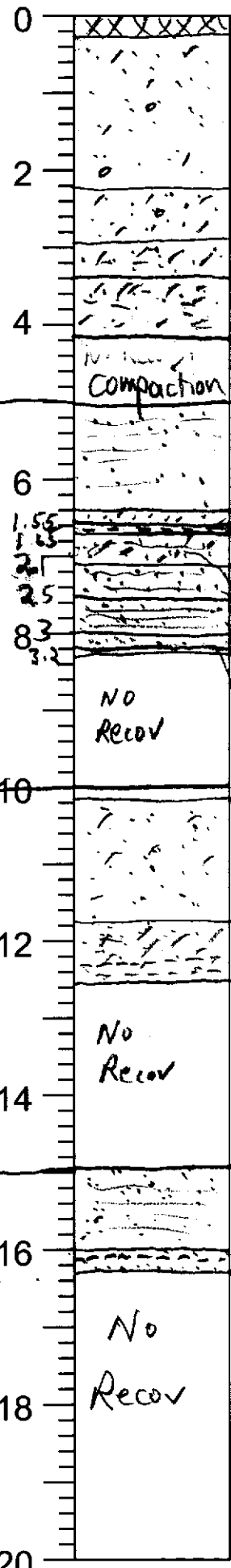
Described by

105125
Core 1

105126
Core 2

105127
Core 3

105128
Core 4



0-2.5 Organic mat-leaf litter & twigs, pine needles
SAND; lt olv brn 2.5Y 5/6; f-m; silty slty; stress; few gran-rsml pl

2-2.2 as above silty-mod slty

2.25-3.9 SAND; f-some-m; mod slty; mottled
lt olv brn 2.5Y 5/4 + dk ysh brn 10YR 4/6

4-4.5 SAND; vf; mod slty; silty-mod clay
mott lt olv brn + dk ysh brn; stress

4.5-6 Compaction
SAND; vf-c; mod slty; w/ v thin silt lam
slily clay mott lt olv brn + dk ysh brn
few gran, few hair roots

6-6.4 SAND; f-c; mostly m-c; lt ysh brn;
few vc stress

6.4-7.1 CLAY; silty; lt gy 2.5Y 7/2 w/ vf sd lam

7.1-8.3 SAND; c-f; mod slty; lt olv brn 2.5Y 5/4
few ohm lam

8.3-9.3 SAND; c-vc; m-f cn; pale yl 2.5Y 7/3; w/
ohm lam + m-c lam (2.5-2.5)

9.3-10.5 SAND; m-f; pale yl; ohm lam cn (2.5-3)

10.5-11.5 SAND; inter lam m-f + c-vc + ohm lam pale
yl (3-3.2)

11.5-12.5 SAND; f-vf; pale yl; w/ ohm lam 3.2-3.5

12.5-13.5 SAND; m-f; c-vc cn; few gran; + ohm lam pale
SAND; m-f; pale yl; few ohm lam; c/s lam .8-2.5Y 7/3
few Mn clots (scat); silty slty

13.5-14.5 SAND; vf-f; mod slty w/ f lam + ohm lam
tr mica; w/ clay SILT lam 2.2-2.55

14.5-16.5 No Recov

16.5-17.5 SAND; c-m; brnsh yl 10YR 6/8 scat Mn clots
few ohm lam + f-m lam; few sm pl

17.5-18.5 SAND; f-m; mostly f; brnsh yl; 1.05-1.1 CLAY; c
1.3 olv yl 5Y 6/6 1.1-1.3 SAND; f-vf;
olv yl

18.5-20 No Recov

DGSID

Ph22-39

LOCALID

Sussex
SWF Core

Start Depth

Stop Depth

Coring
Start Time

Coring
Stop Time

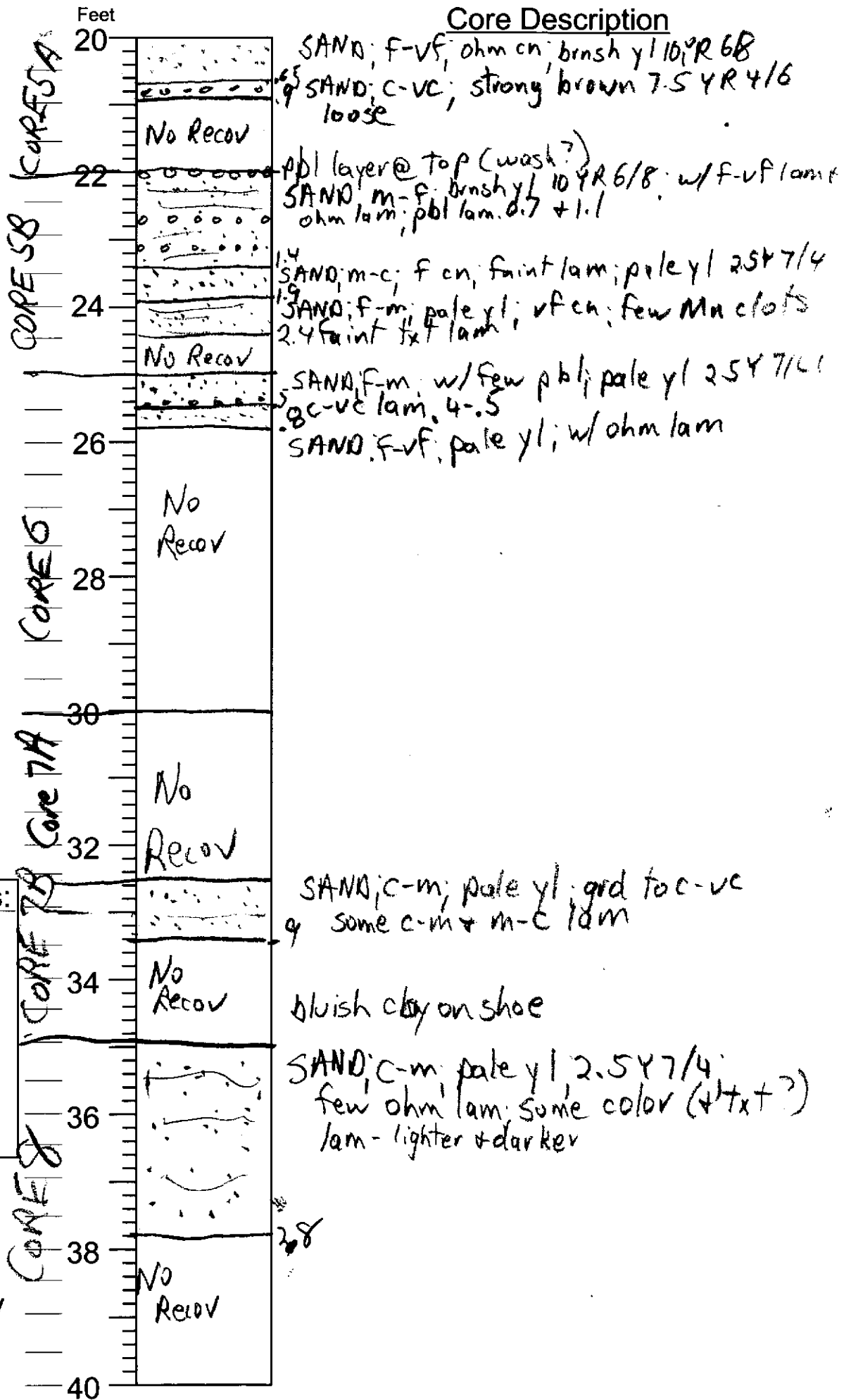
Drilling Notes:

Date

7/27/08

Described by

KWR



DGSID

Ph22-39

LOCALID

Sussex
SWF Core

Start Depth

Stop Depth

Coring
Start Time

Coring
Stop Time

Drilling Notes:

Date

7/24-25/08

Described by

KWR

Feet

40

42

44

46

48

50

52

54

56

58

60

Core Description

granule sand - wash
SAND; m-f; pale y/l 2.5Y 7/4 -
no structure

No
Recov

SAND; m-c; pale y/l; few sml pb/
grd to c-m + vc

SAND; m-f; pale y/l; grd to m-c;
few dker zones - olv y/l @ top
few Mn clots

No
Recov

SAND; c-vc; most c; gran-sml pb/
B Cn; pale y/l 2.5Y 7/4; ohm cn

No
Recov

SAND; c-m; mostly crs; vc-gran cn
(in lam); pale y/l + strong kn (in lam)
7.5YR 4/6; faintly text lam (finer
1.7 + crser); ohm cn

No
Recov

SAND; c-vc; pale y/l; few pb/gran lam
1.0 - olv y/l 2.5Y 6/8 silty zone

No
Recov

CORE 9

CORE 10

CORE 11A
Start
7/25

CORE 11B

CORE 12

DGSID

Ph22-39

LOCALID

Sussex
SWF Core

Start Depth

Stop Depth

Coring
Start Time

Coring
Stop Time

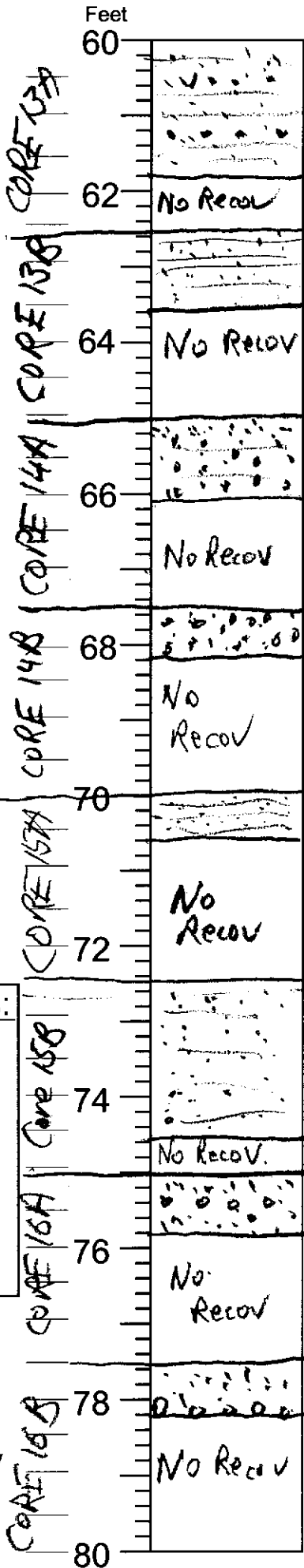
Drilling Notes:

Date

7/25/08

Described by

KWR



Core Description

SAND, f-vf, m cn; txt lam cn (x-bed)
Few Fe clots; v slily stty
pale yl 2.5Y 7/3

SAND, f-m; mostly f, vf cn; pale yl;
txt lam cn - including y thin silt drapes
few Fe/mn clots (reddish)
prob vc-pbl - few pbl in shoe

SAND, c-m grd dn to vc-gran; few v sm
pbl; pale yl 2.5Y 7/4; pk-stain
1.1 gran cn; few color lam; str brn

GRANULE wash - all sand washed out
left w/ granule gravel
qtz chrt (brown + black) abd pink-
red str grains

SAND, m-f; pale yl; some crs;
6 finely lam (txt); ohm lam cn

SAND, m-f; pale yl; grd dn to ^{@ 1.6"} m-c
vc-gran lam cn; few v sm pbl in
crs; lam; ohm + ohm lam cn;
few Fe clots (reddish)

2.05 1.6" back to m-f w/ crs
SAND, c-m; pale yl; few vc lam; few
8 reddish Fe clots - almost lam

SAND, m-c, f cn; abd ohm; pale yl/
7 txt lam cn; pbl cn. 6-7

DGSID

Ph22-39

LOCALID

Sussex SWF Core

Start Depth

Stop Depth

Coring Start Time

Coring Stop Time

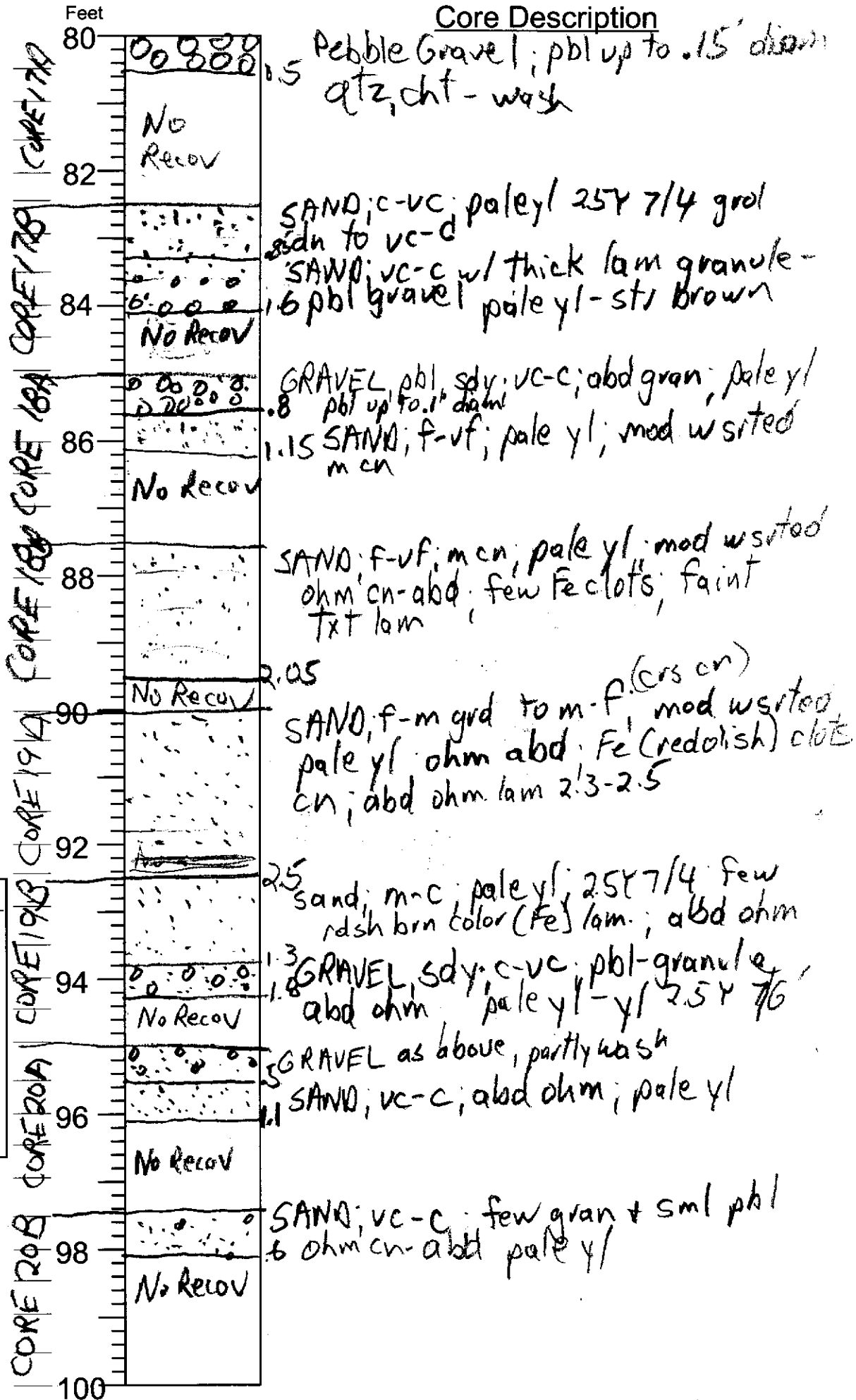
Drilling Notes:

Date

7/25/08

Described by

KWA



DGSID

Ph22-39

LOCALID

Sussex
SWF Core

Start Depth

Stop Depth

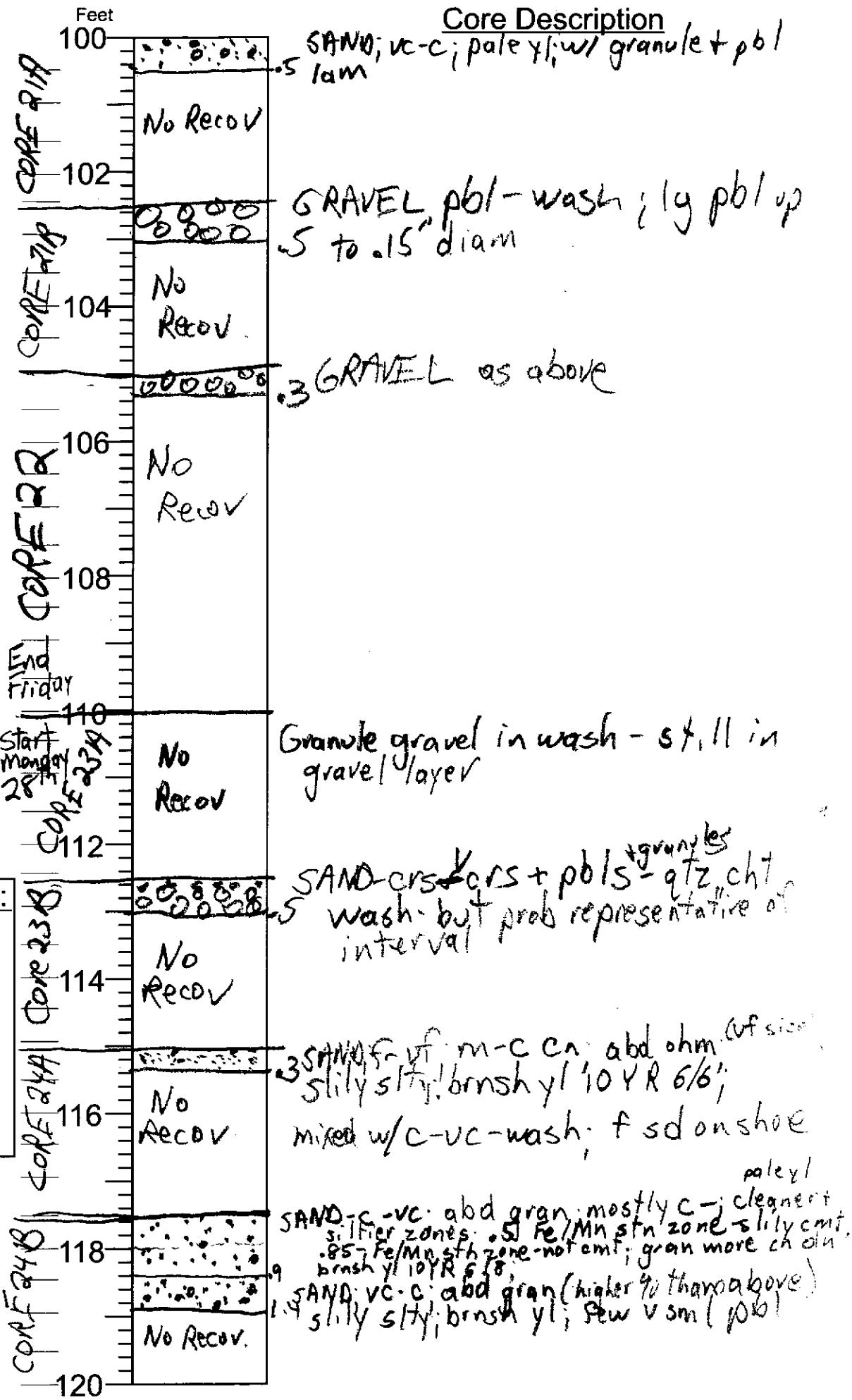
Coring
Start Time

Coring
Stop Time

Drilling Notes:

Date

Described by



Core Description

CORE 21A
CORE 21B
CORE 21C
CORE 22A
CORE 22B
CORE 23A
CORE 23B
CORE 24A
CORE 24B

End Friday
Start Monday
28/11/14

DGSID

Ph22-39

LOCALID

Sussex
SWF Core

Start Depth

Stop Depth

Coring
Start Time

Coring
Stop Time

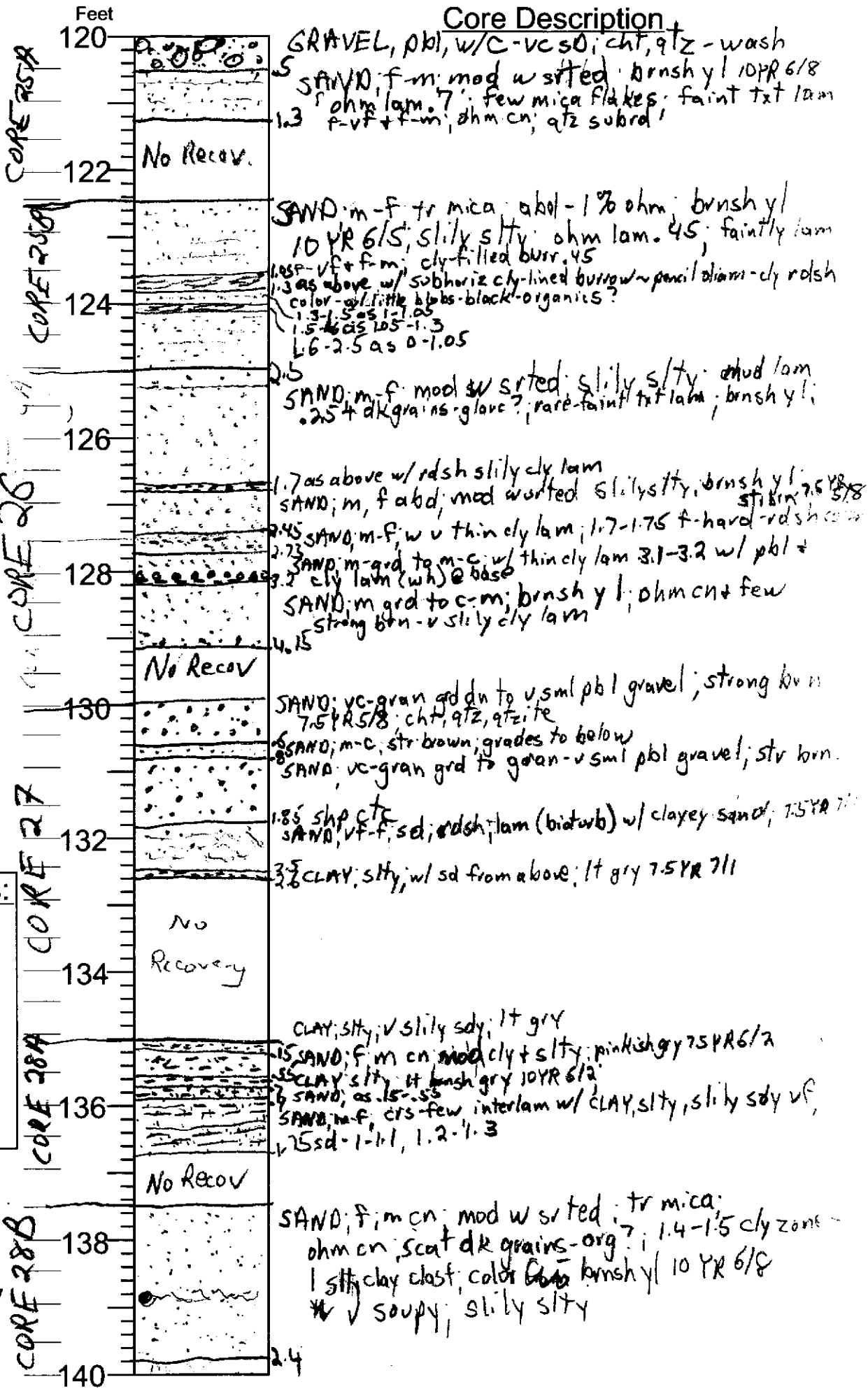
Drilling Notes:

Date

7/28/08

Described by

KWR



DGSID

Of11-06

LOCALID

Sussex
SWF Core

Start Depth

Stop Depth

Coring
Start Time

Coring
Stop Time

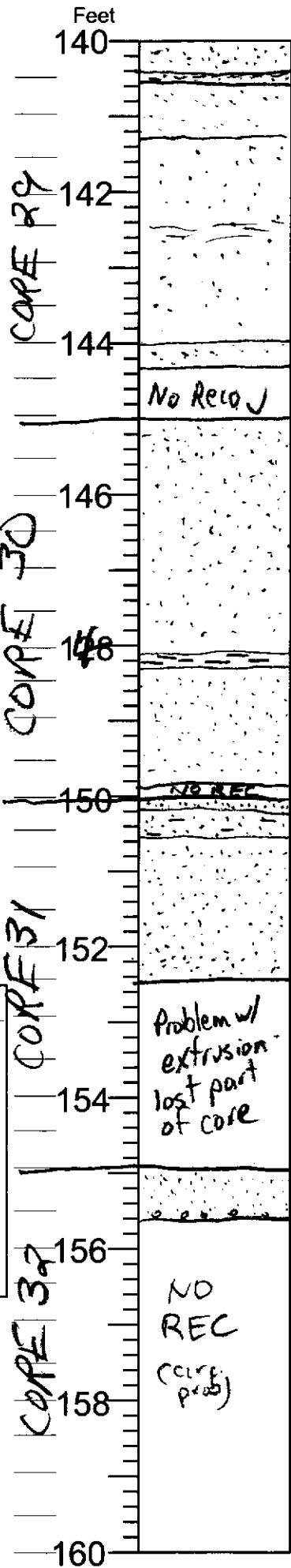
Drilling Notes:

Date

7/26/08

Described by

KWR/PPM



Core Description

140 SAND, f. m. cn. mod w sorted; silty silty; brnsh y/l
 4.1 SAND, f. v. f. silty clay olive y/l 2.5 Y 6/8; burrowed 10YR 6/8
 SAND, v. f. compact has mottled look (bioturb?); lt y/l sh
 brn 10YR 6/4, 1 ohm cn
 142 SAND, f. m. cn; tr mica ohm cn; dk grns-org? ma 2.5
 v thin clay lam 2.5-2.65; silty silty, soupy
 144 SAND, m-f; tr mica; brnsh y/l 10YR 6/8
 4.3 few lt gry clay zones - burrows
 No Rec'd
 146 SAND, f(cu) - m(c), mod well srt'd, v. slightly silty
 r. mica, tr 2% dk grains (ohm + plant), a few
 blebs of enrded plant debris; color varies
 from tannish (olive yellow 2.5Y 6/8) to orangish
 (yellowish red 5YR 5/8) w/ harder but crumbly
 reddish concretions @ 1.65 & 2.65', < 1 cm dia; plus
 a few small (< 1 cm) lt gray clayey blebs
 148 3.15 CHAL, silty & sandy (v-f), gray (10YR 5/1)
 3.3 w/ common blebs of reddish muddy sand (burrowed
 from above?)
 SAND, as @ 0-3.15, but w/ much more abd clay blebs
 and a thin redder zone @ 3.9' w/ small dk
 rusty (2.5YR 2.5/1, reddish black) concretion
 fragments a few mm in dia; color less rusty,
 slightly darker gray nr bottom
 150 4.85 SAND, AIA
 0.7 SAND w/ clay laminae / blebs; sand mostly med;
 some fine; slightly muddy (clay / silt); clay is ~25%
 0.5 of volume, with irreg. lams and/or burrow fills
 and/or clay clasts up to 1.5 cm long, some less sandy.
 Some more sandy, light gray (gray 10YR 5/1)
 152 2.5 SAND (0.5-2.5 ft), sim to core above, f(cu) - m(c)
 mod well sorted, variably watery or slightly silty
 (disrupted by core extrusion); color orangish-tan
 [brownish yellow 10YR 6/8 to reddish yellow 2.5YR 6/8]
 fragment of reddish sand + gray clay bleb @ 1.35 ft.
 154 Problem w/ extrusion
 lost part
 of core
 156 0.6 SAND, med; a few pebbles @ bottom;
 a 1 cm x 2 mm iron-cemented burrow washed
 out of core; reddish yellow (7.5YR 6/8)
 ~ 1% ohm
 158 NO REC
 (Clog. Prob)
 160

DGSID

Ph22-39

LOCALID

Sussex
SWF Core

Start Depth

Stop Depth

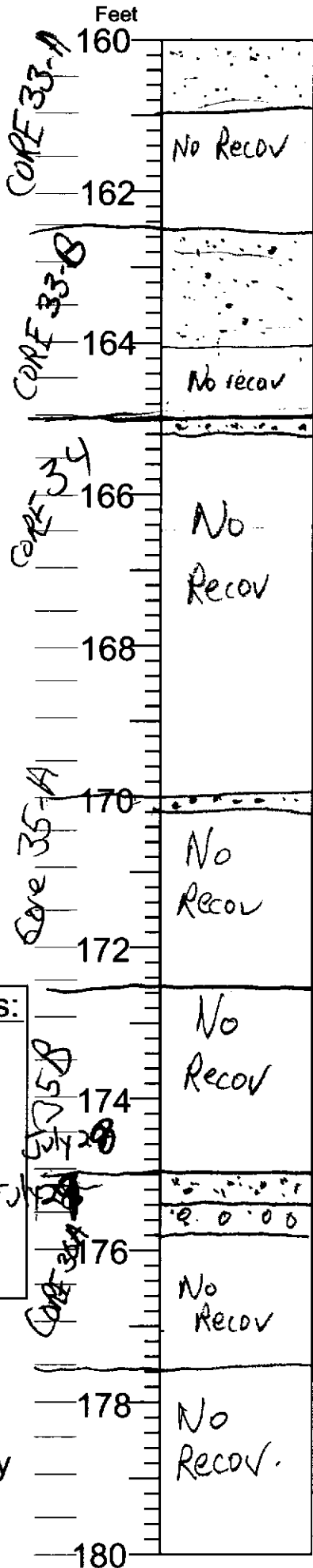
Coring
Start Time

Coring
Stop Time

Drilling Notes:

Date

Described by



Core Description

SAND; m. rdish yf - 7.5 YR 6/8 - strong brown
7.5 YR 5/8 up to 2% ohm. tr micc. color lam -
str brown, slightly silty. Few vc grains.
cleaner than above; mod w srted

SAND; m; crs cn; clean; lt y/wh brn 10 YR 6/4;
few VC. some str brn lam; ohm up to 2%
rad blk grains - phosphate

SAND; m-c. v clean. 2% ohm;
vc - gran ch; gray cly sand on shae -
all wash

SAND; m-c + gran + v smt phl; pale y / 2.5%
wash 7/3

Crs Sand + gran

SAND; crs-m; lt gry - wash - clean
SAND; crs-m; + gran + phl (cn) brnsh yf
10 YR 6/8 + crs-size ohm (phos?) sl. h srted

DGSID

Ph22-39

LOCALID

Sussex SWF Core

Start Depth

Stop Depth

Coring Start Time

Coring Stop Time

Drilling Notes:

Date

Described by

Feet

180

182

184

186

188

190

192

194

196

198

200

Handwritten core identifiers: CORE 37A, CORE 37B, CORE 37C, CORE 37D, CORE 37E, CORE 37F, CORE 37G, CORE 37H, CORE 37I, CORE 37J, CORE 37K, CORE 37L, CORE 37M, CORE 37N, CORE 37O, CORE 37P, CORE 37Q, CORE 37R, CORE 37S, CORE 37T, CORE 37U, CORE 37V, CORE 37W, CORE 37X, CORE 37Y, CORE 37Z, CORE 37AA, CORE 37AB, CORE 37AC, CORE 37AD, CORE 37AE, CORE 37AF, CORE 37AG, CORE 37AH, CORE 37AI, CORE 37AJ, CORE 37AK, CORE 37AL, CORE 37AM, CORE 37AN, CORE 37AO, CORE 37AP, CORE 37AQ, CORE 37AR, CORE 37AS, CORE 37AT, CORE 37AU, CORE 37AV, CORE 37AW, CORE 37AX, CORE 37AY, CORE 37AZ, CORE 37BA, CORE 37BB, CORE 37BC, CORE 37BD, CORE 37BE, CORE 37BF, CORE 37BG, CORE 37BH, CORE 37BI, CORE 37BJ, CORE 37BK, CORE 37BL, CORE 37BM, CORE 37BN, CORE 37BO, CORE 37BP, CORE 37BQ, CORE 37BR, CORE 37BS, CORE 37BT, CORE 37BU, CORE 37BV, CORE 37BW, CORE 37BX, CORE 37BY, CORE 37BZ, CORE 37CA, CORE 37CB, CORE 37CC, CORE 37CD, CORE 37CE, CORE 37CF, CORE 37CG, CORE 37CH, CORE 37CI, CORE 37CJ, CORE 37CK, CORE 37CL, CORE 37CM, CORE 37CN, CORE 37CO, CORE 37CP, CORE 37CQ, CORE 37CR, CORE 37CS, CORE 37CT, CORE 37CU, CORE 37CV, CORE 37CW, CORE 37CX, CORE 37CY, CORE 37CZ, CORE 37DA, CORE 37DB, CORE 37DC, CORE 37DD, CORE 37DE, CORE 37DF, CORE 37DG, CORE 37DH, CORE 37DI, CORE 37DJ, CORE 37DK, CORE 37DL, CORE 37DM, CORE 37DN, CORE 37DO, CORE 37DP, CORE 37DQ, CORE 37DR, CORE 37DS, CORE 37DT, CORE 37DU, CORE 37DV, CORE 37DW, CORE 37DX, CORE 37DY, CORE 37DZ, CORE 37EA, CORE 37EB, CORE 37EC, CORE 37ED, CORE 37EE, CORE 37EF, CORE 37EG, CORE 37EH, CORE 37EI, CORE 37EJ, CORE 37EK, CORE 37EL, CORE 37EM, CORE 37EN, CORE 37EO, CORE 37EP, CORE 37EQ, CORE 37ER, CORE 37ES, CORE 37ET, CORE 37EU, CORE 37EV, CORE 37EW, CORE 37EX, CORE 37EY, CORE 37EZ, CORE 37FA, CORE 37FB, CORE 37FC, CORE 37FD, CORE 37FE, CORE 37FF, CORE 37FG, CORE 37FH, CORE 37FI, CORE 37FJ, CORE 37FK, CORE 37FL, CORE 37FM, CORE 37FN, CORE 37FO, CORE 37FP, CORE 37FQ, CORE 37FR, CORE 37FS, CORE 37FT, CORE 37FU, CORE 37FV, CORE 37FW, CORE 37FX, CORE 37FY, CORE 37FZ, CORE 37GA, CORE 37GB, CORE 37GC, CORE 37GD, CORE 37GE, CORE 37GF, CORE 37GG, CORE 37GH, CORE 37GI, CORE 37GJ, CORE 37GK, CORE 37GL, CORE 37GM, CORE 37GN, CORE 37GO, CORE 37GP, CORE 37GQ, CORE 37GR, CORE 37GS, CORE 37GT, CORE 37GU, CORE 37GV, CORE 37GW, CORE 37GX, CORE 37GY, CORE 37GZ, CORE 37HA, CORE 37HB, CORE 37HC, CORE 37HD, CORE 37HE, CORE 37HF, CORE 37HG, CORE 37HH, CORE 37HI, CORE 37HJ, CORE 37HK, CORE 37HL, CORE 37HM, CORE 37HN, CORE 37HO, CORE 37HP, CORE 37HQ, CORE 37HR, CORE 37HS, CORE 37HT, CORE 37HU, CORE 37HV, CORE 37HW, CORE 37HX, CORE 37HY, CORE 37HZ, CORE 37IA, CORE 37IB, CORE 37IC, CORE 37ID, CORE 37IE, CORE 37IF, CORE 37IG, CORE 37IH, CORE 37II, CORE 37IJ, CORE 37IK, CORE 37IL, CORE 37IM, CORE 37IN, CORE 37IO, CORE 37IP, CORE 37IQ, CORE 37IR, CORE 37IS, CORE 37IT, CORE 37IU, CORE 37IV, CORE 37IW, CORE 37IX, CORE 37IY, CORE 37IZ, CORE 37JA, CORE 37JB, CORE 37JC, CORE 37JD, CORE 37JE, CORE 37JF, CORE 37JG, CORE 37JH, CORE 37JI, CORE 37JJ, CORE 37JK, CORE 37JL, CORE 37JM, CORE 37JN, CORE 37JO, CORE 37JP, CORE 37JQ, CORE 37JR, CORE 37JS, CORE 37JT, CORE 37JU, CORE 37JV, CORE 37JW, CORE 37JX, CORE 37JY, CORE 37JZ, CORE 37KA, CORE 37KB, CORE 37KC, CORE 37KD, CORE 37KE, CORE 37KF, CORE 37KG, CORE 37KH, CORE 37KI, CORE 37KJ, CORE 37KK, CORE 37KL, CORE 37KM, CORE 37KN, CORE 37KO, CORE 37KP, CORE 37KQ, CORE 37KR, CORE 37KS, CORE 37KT, CORE 37KU, CORE 37KV, CORE 37KW, CORE 37KX, CORE 37KY, CORE 37KZ, CORE 37LA, CORE 37LB, CORE 37LC, CORE 37LD, CORE 37LE, CORE 37LF, CORE 37LG, CORE 37LH, CORE 37LI, CORE 37LJ, CORE 37LK, CORE 37LL, CORE 37LM, CORE 37LN, CORE 37LO, CORE 37LP, CORE 37LQ, CORE 37LR, CORE 37LS, CORE 37LT, CORE 37LU, CORE 37LV, CORE 37LW, CORE 37LX, CORE 37LY, CORE 37LZ, CORE 37MA, CORE 37MB, CORE 37MC, CORE 37MD, CORE 37ME, CORE 37MF, CORE 37MG, CORE 37MH, CORE 37MI, CORE 37MJ, CORE 37MK, CORE 37ML, CORE 37MN, CORE 37MO, CORE 37MP, CORE 37MQ, CORE 37MR, CORE 37MS, CORE 37MT, CORE 37MU, CORE 37MV, CORE 37MW, CORE 37MX, CORE 37MY, CORE 37MZ, CORE 37NA, CORE 37NB, CORE 37NC, CORE 37ND, CORE 37NE, CORE 37NF, CORE 37NG, CORE 37NH, CORE 37NI, CORE 37NJ, CORE 37NK, CORE 37NL, CORE 37NM, CORE 37NN, CORE 37NO, CORE 37NP, CORE 37NQ, CORE 37NR, CORE 37NS, CORE 37NT, CORE 37NU, CORE 37NV, CORE 37NW, CORE 37NX, CORE 37NY, CORE 37NZ, CORE 37OA, CORE 37OB, CORE 37OC, CORE 37OD, CORE 37OE, CORE 37OF, CORE 37OG, CORE 37OH, CORE 37OI, CORE 37OJ, CORE 37OK, CORE 37OL, CORE 37OM, CORE 37ON, CORE 37OO, CORE 37OP, CORE 37OQ, CORE 37OR, CORE 37OS, CORE 37OT, CORE 37OU, CORE 37OV, CORE 37OW, CORE 37OX, CORE 37OY, CORE 37OZ, CORE 37PA, CORE 37PB, CORE 37PC, CORE 37PD, CORE 37PE, CORE 37PF, CORE 37PG, CORE 37PH, CORE 37PI, CORE 37PJ, CORE 37PK, CORE 37PL, CORE 37PM, CORE 37PN, CORE 37PO, CORE 37PP, CORE 37PQ, CORE 37PR, CORE 37PS, CORE 37PT, CORE 37PU, CORE 37PV, CORE 37PW, CORE 37PX, CORE 37PY, CORE 37PZ, CORE 37QA, CORE 37QB, CORE 37QC, CORE 37QD, CORE 37QE, CORE 37QF, CORE 37QG, CORE 37QH, CORE 37QI, CORE 37QJ, CORE 37QK, CORE 37QL, CORE 37QM, CORE 37QN, CORE 37QO, CORE 37QP, CORE 37QQ, CORE 37QR, CORE 37QS, CORE 37QT, CORE 37QU, CORE 37QV, CORE 37QW, CORE 37QX, CORE 37QY, CORE 37QZ, CORE 37RA, CORE 37RB, CORE 37RC, CORE 37RD, CORE 37RE, CORE 37RF, CORE 37RG, CORE 37RH, CORE 37RI, CORE 37RJ, CORE 37RK, CORE 37RL, CORE 37RM, CORE 37RN, CORE 37RO, CORE 37RP, CORE 37RQ, CORE 37RR, CORE 37RS, CORE 37RT, CORE 37RU, CORE 37RV, CORE 37RW, CORE 37RX, CORE 37RY, CORE 37RZ, CORE 37SA, CORE 37SB, CORE 37SC, CORE 37SD, CORE 37SE, CORE 37SF, CORE 37SG, CORE 37SH, CORE 37SI, CORE 37SJ, CORE 37SK, CORE 37SL, CORE 37SM, CORE 37SN, CORE 37SO, CORE 37SP, CORE 37SQ, CORE 37SR, CORE 37SS, CORE 37ST, CORE 37SU, CORE 37SV, CORE 37SW, CORE 37SX, CORE 37SY, CORE 37SZ, CORE 37TA, CORE 37TB, CORE 37TC, CORE 37TD, CORE 37TE, CORE 37TF, CORE 37TG, CORE 37TH, CORE 37TI, CORE 37TJ, CORE 37TK, CORE 37TL, CORE 37TM, CORE 37TN, CORE 37TO, CORE 37TP, CORE 37TQ, CORE 37TR, CORE 37TS, CORE 37TT, CORE 37TU, CORE 37TV, CORE 37TW, CORE 37TX, CORE 37TY, CORE 37TZ, CORE 37UA, CORE 37UB, CORE 37UC, CORE 37UD, CORE 37UE, CORE 37UF, CORE 37UG, CORE 37UH, CORE 37UI, CORE 37UJ, CORE 37UK, CORE 37UL, CORE 37UM, CORE 37UN, CORE 37UO, CORE 37UP, CORE 37UQ, CORE 37UR, CORE 37US, CORE 37UT, CORE 37UU, CORE 37UV, CORE 37UW, CORE 37UX, CORE 37UY, CORE 37UZ, CORE 37VA, CORE 37VB, CORE 37VC, CORE 37VD, CORE 37VE, CORE 37VF, CORE 37VG, CORE 37VH, CORE 37VI, CORE 37VJ, CORE 37VK, CORE 37VL, CORE 37VM, CORE 37VN, CORE 37VO, CORE 37VP, CORE 37VQ, CORE 37VR, CORE 37VS, CORE 37VT, CORE 37VU, CORE 37VV, CORE 37VW, CORE 37VX, CORE 37VY, CORE 37VZ, CORE 37WA, CORE 37WB, CORE 37WC, CORE 37WD, CORE 37WE, CORE 37WF, CORE 37WG, CORE 37WH, CORE 37WI, CORE 37WJ, CORE 37WK, CORE 37WL, CORE 37WM, CORE 37WN, CORE 37WO, CORE 37WP, CORE 37WQ, CORE 37WR, CORE 37WS, CORE 37WT, CORE 37WU, CORE 37WV, CORE 37WW, CORE 37WX, CORE 37WY, CORE 37WZ, CORE 37XA, CORE 37XB, CORE 37XC, CORE 37XD, CORE 37XE, CORE 37XF, CORE 37XG, CORE 37XH, CORE 37XI, CORE 37XJ, CORE 37XK, CORE 37XL, CORE 37XM, CORE 37XN, CORE 37XO, CORE 37XP, CORE 37XQ, CORE 37XR, CORE 37XS, CORE 37XT, CORE 37XU, CORE 37XV, CORE 37XW, CORE 37XX, CORE 37XY, CORE 37XZ, CORE 37YA, CORE 37YB, CORE 37YC, CORE 37YD, CORE 37YE, CORE 37YF, CORE 37YG, CORE 37YH, CORE 37YI, CORE 37YJ, CORE 37YK, CORE 37YL, CORE 37YM, CORE 37YN, CORE 37YO, CORE 37YP, CORE 37YQ, CORE 37YR, CORE 37YS, CORE 37YT, CORE 37YU, CORE 37YV, CORE 37YW, CORE 37YX, CORE 37YY, CORE 37YZ, CORE 37ZA, CORE 37ZB, CORE 37ZC, CORE 37ZD, CORE 37ZE, CORE 37ZF, CORE 37ZG, CORE 37ZH, CORE 37ZI, CORE 37ZJ, CORE 37ZK, CORE 37ZL, CORE 37ZM, CORE 37ZN, CORE 37ZO, CORE 37ZP, CORE 37ZQ, CORE 37ZR, CORE 37ZS, CORE 37ZT, CORE 37ZU, CORE 37ZV, CORE 37ZW, CORE 37ZX, CORE 37ZY, CORE 37ZZ

Core Description

3 SAND; c-m; lt gry vc-gran ch - wash
 7.5 SAND; c-m; brnsh yl 10YR 6/8; vc-gran ch
 lam silty slty + clean sand, grains m-c ohm ch
 mod

No Recov

SAND; c-m; lt gry wash vc-gran ch
 crs blk grains phosphate? - or not - next core has clean s
 mod

1.5 SAND; f-m; crs ch; slty; yellow 10YR 8/6
 ohm ch

No Recov

No Recov

SAND; c-vc; clean banded lt gry + yellow
 10YR 7/8; ohm ch; gran ch;
 few v thid silty slty lam

1.6

No Recov

SAND; c-vc; clean; lt gry
 4 SAND; c-m; mod slty; yellow 10YR 8/6;
 ohm ch

Interlam SAND; clean; c-m; lt gry + f; m ch - abd
 mod slty v pale brown 10YR 7/4; lam Fe-conc
 (not really cmt)

No Recov

No Recov

SAND; c-vc; lt gry-yellow; ohm ch clean
 partially disintegrated
 trace of sd-silty bluish gray
 last 1' drilled easier

No Recov

SAND; c-vc; lt gry; clean wash
 5 SAND; interlam f-vf; mod slty; v pale brn
 10YR 8/3 + m-f; silty slty; brnsh yl layer v
 1.6 SAND; f-vf; slty; mod slty; v pale brn;
 brnsh yl layer @ top; faintly lam;
 ohm lam ch
 bluish sd on shoe

Handwritten notes: tried 50 ft core

DGSID

Ph22-39

LOCALID

Sussex
SWF Core

Start Depth

Stop Depth

Coring
Start Time

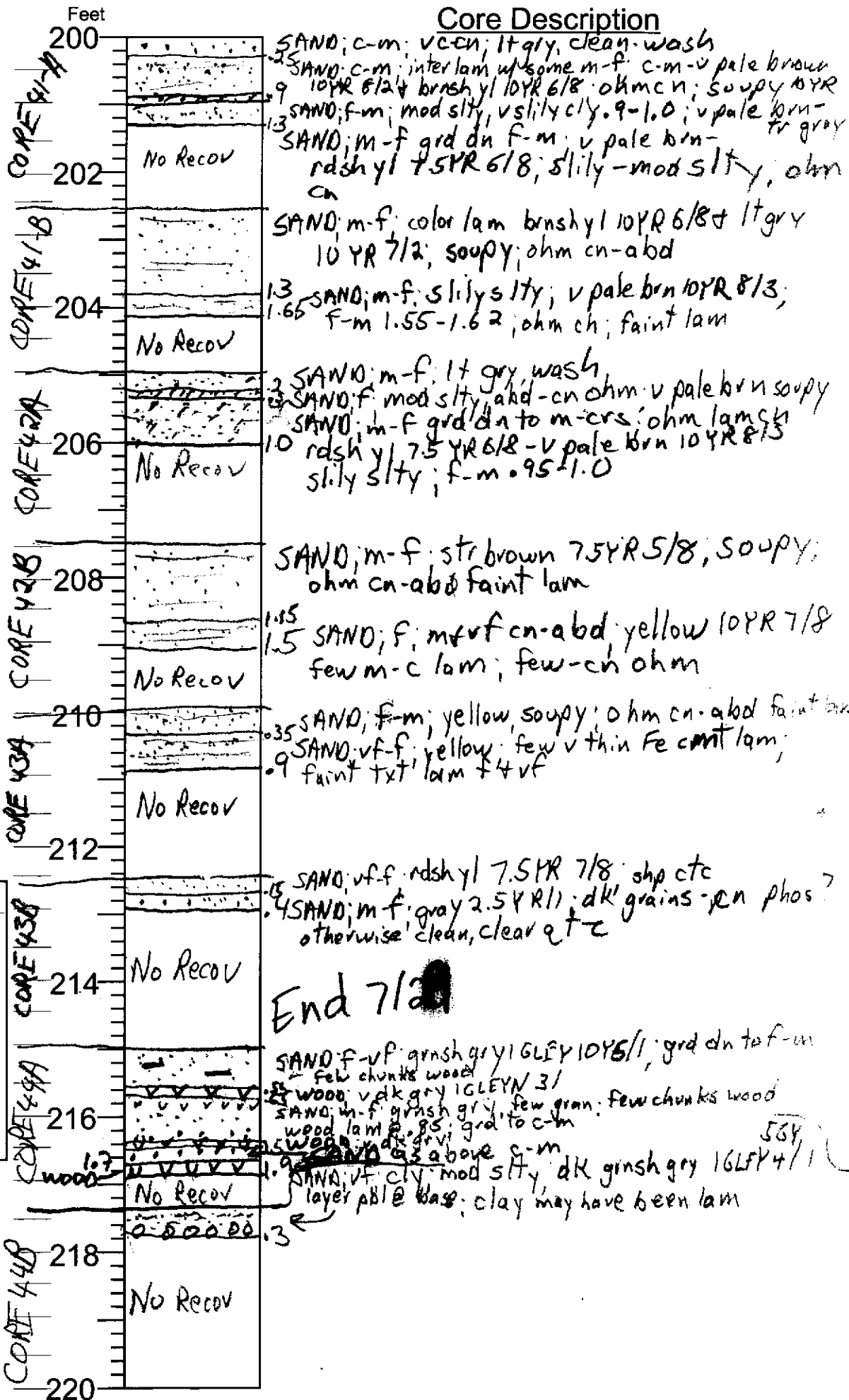
Coring
Stop Time

Drilling Notes:

Jaime says
tomorrow is a
better day

Date

Described by



DGSID

Ph22-39

LOCALID

Sussex SWF Core

Start Depth

[Empty box]

Stop Depth

[Empty box]

Coring Start Time

[Empty box]

Coring Stop Time

~ 10:25 am

Drilling Notes:

[Empty box]

Date

7/30/08

Described by

CC/RML/KWR

Feet
220

CORE 45A
222

CORE 45B
224

CORE 46
228

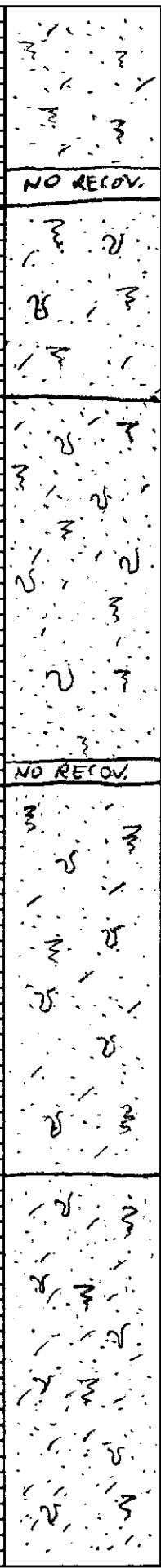
CORE 47
232

CORE 48
234

CORE 49
236

CORE 50
238

240



Core Description

SAND, fine, variably silty & clayey from bioturb; dk greenish gray (GLY 1, 5GY 4/1); rare (~1%) o.h.m, trace mica; sand well sorted, overall, but w/ scattered CRS-VERS grains

2.05'

SAND, fine, well sorted, oblong; 1-2% darks (oblong) trace mica; dk greenish gray (GLY 1, 5GY 4/1); variably silty & clayey with clear subhoriz burrows 1.5-2cm dia + other less discrete burrows; some scattered plant debris & CRS-VERS sd grains

4.5

SAND, fine, gen. well sorted, oblong; ~3% dark grains (incl. o.h.m), trace mica; vers-crs sand grains scattered in upper part, decr. in abd from 2.5-3.5 ft, few below 3.5 ft; variably silty & clayey due to abd burrows & gen'l bioturb, with less admixed mud below 3.5 ft; burrows 1-2 cm, subhoriz, commonly w/ some mud lining, also some less distinct burrowing & bioturb. GLY 2 5GY 4/1

4.7

SAND, fine, well sorted, scattered coarse grains, trace mica, variably silty & clayey, variations reflect bioturbation & burrows - horizontal w/ mud lining burrows, 1-2 cm diameter GLY 1 10Y 4/1 dark greenish gray ~3% dark grains (ohm)

5.1

SAND fine, well sorted; scattered crs grains, most commonly below 3.5 ft; a pebble and some grains of crs-VERS sd @ 2.2 ft; ~3% dk grains (ohm) + trace mica; variably silty & clayey, conforming to burrows & bioturbation - overall, more silty/clayey than above; burrows subhoriz, 1-2 cm dia, commonly mud-lined; slightly darker & browner than above; olive gray 5Y 4/2

5.1

DGSID

Ph22-39

LOCALID

Sussex SWF Core

Start Depth

Stop Depth

Coring Start Time

Coring Stop Time

Drilling Notes:

Date

7/30/08

Described by

Feet

240

242

244

246

248

250

252

254

256

258

260

CORE 49

CORE 50

CORE 51

CORE 52

Core Description

SAND, fine, increasing proportion of crs & vers grains downward and decrease in sorting; above 0.9, mostly fine sand w/ admixed (via burrows) mud; 0.9-3.7 his scattered but incr crs & vers grains, incl. conspicuous black (phos?) grains; below 3.7, crs- & vers makes up to 10% of fraction, incl. a few granules; fine sd incl. 3-5% darks (ohm - any glauc??); throughout, variable silt & clay content refl. bioturb/burrowing discrete horiz burrows ~ 1 cm dia (muddier & darker, than above slightly)

(0.9)

(3.7)

4.6

NO RECOVERY

SAND, mostly fine, ^{muddy} poorly sorted w/ common med to vers, scattered granules, a few pebbles; very shelly overall, w/ a few shell frags 0-0.9, increasing downward to ~10% vol nr bottom; shells mostly small (bivalve frags, small gastropods & few sraphopods, some dark shell) w/ large lamellar thick bivalves @ 2.9 & 3.7 ft; crs-gran incl. rounded bluish grt & black shiny (prob. phosphate) incl. fish bone; shell & crs material more abd nr bottom; abd burrow (1-2 cm dia) & extensive bioturb makes for variable silt & clay content, overall muddy very dark gray 5Y 3/1 (small bivalves - Anulinia?)

50

SAND, muddy, mostly fine, poorly sorted w/ common med to vers, scattered granules, few pebbles; coarse sand fraction & shell material more abd abt 1.3 ft, as is black (? phosphate) large grains; sand incl. 5-7% darks (ohm, also? plant); below 1.3 ft, shells are less abd but shells (gastr., ? Anulinia, Arca-type frags) tend to be larger; appears bioturbated but distinct burrows uncommon, large bivalve ~ 4.3' (? Arca-type?) <more homogeneous than above>

GLEY 1 SG 2.5/1 greenish black

4.6

NO RECOVERY

SAND, slightly silty, ^{mod. srtg.} mostly fine, w/ a peppery appearance from ~10% dark grains (ohm + glauc?); uncommon scattered crs- & vers sd, rare granules, pebble @ 2.2 ft; common shells & shell frags, overall decr. in size & abd downward; the crs sd-gran fraction less common in lower half; shells incl. small bivalves (? Anulinia, arcaids), small gastropods; indistinct burrows & bioturb. common; 1 GLEY SG 2.5/2 dark grayish green; the siltiness is pretty homogenous

5.0

DGSID

Ph22-39

LOCALID

Sussex SWF Core

Start Depth

Stop Depth

Coring Start Time

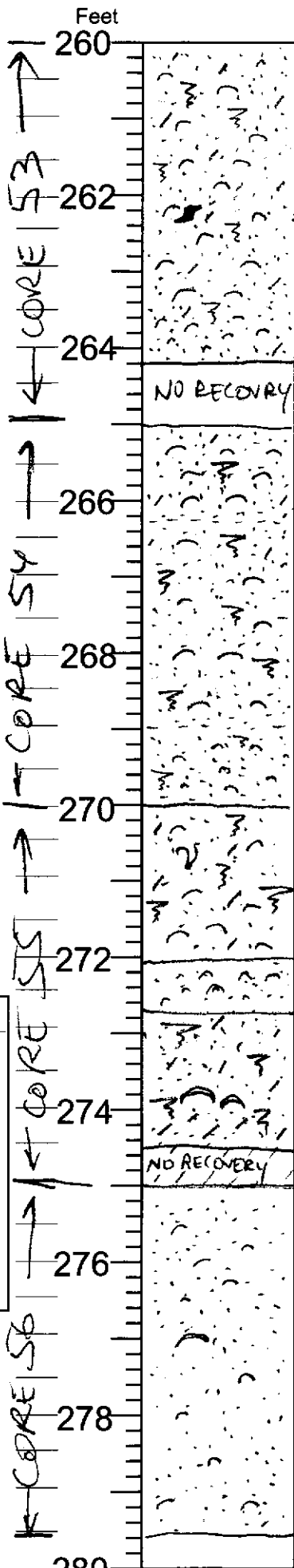
Coring Stop Time

Drilling Notes:

Date

7/30/08

Described by



Core Description

(at some bluish, well rounded, as in all these...)

SAND, vy sim to above; fine sd predominates, muddy (mostly silt, some clay); mod srtg w/ scattered crs. vcrs. grains; vy "peppery" w/ ~10% (maybe more) dk grains, ohm + glauc (more glauc than high-); common small (1-3 mm) shells & shell frags (?Mulinia, gastropods, etc.) w/ small shells more conc. below 263.5 ft; appears extensively bioturbated by mud-filled burrow @ 263.5' greenish black GLEY 1 10GY 2.5/1; @ 2.3A, 4.2 (a bit squashed) lignite frags.

SAND, vy sim to above; fine sand, muddy (mostly silt); mod srtg w/ scattered crs-vcrs-gran & a couple of pebbles, less lower down - fewer than core above; ~10% dk grains (glauc? tohm); common small shells & frags, w/ more abd + larger ones above 1.3 ft, smaller & less common 1.3-4.0 ft, smaller & more abd 4.0-5.0 ft; also med-sd size phosphate grains are abd (~5%?) from 4.5-5.0' w/ the dark grains; bioturbated / churned, mud homogenized w/ sand

GLEY 1 10GY 2.5/1 greenish black
SAND, fine, slightly silty, mod-well srt'd, rare crs-vcrs sd grains; 7-10% dark grains; shell incr. from unc (in pr 1') to common downward color a/a; bioturbated, some faint smaller burrows

SAND, fine w/ abd med & cmn crs, mod-poorly srt'd, 10-15% dk grains (?glauc, ?? phos for med gr, ohm a lot of fine), common shell fragments up to 2mm.; color a/a

SAND, fine, mod-well srt'd, fines downward to fine w/ cmn vy fine; slightly silty nr top, incr. silt downward; ~10% darks; scattered small shell frags in upper part, 2 lg bivalves in middle (3.6) small faint chalky shell in lower part; color a/a

SAND, watery, fine, well sorted, at least 10% dark grains; common shells & frags, many small bivalves (~3 mm, Mulinia?), rare bone/phosphate color a/a, GLEY 1 10GY 2.5/1; slightly silty, a few larger shell frags @ 2.0'

4.6

DGSID

Ph22-39

LOCALID

Sussex
SWF Core

Start Depth

Stop Depth

Coring
Start Time

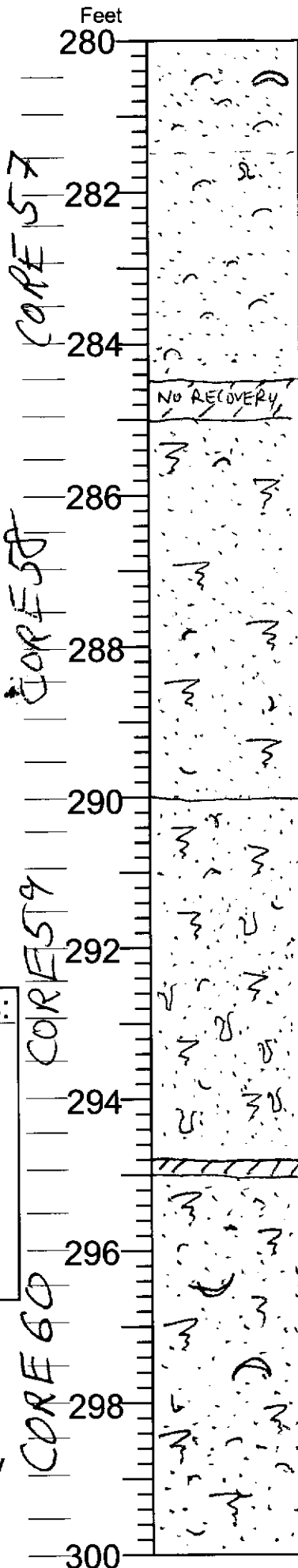
Coring
Stop Time

Drilling Notes:

Date

7/30/08

Described by



Core Description

SAND, fine w/ few medium grains to coarse. 10% dark-grains, abundant shell frags (mostly 2-3mm bivalves, few gastro), little phosphate grains intermixed, Bivalve shell (.3 to 2cm diameter) water in places - sand slightly silty, more black specs towards bottom of core, homogeneous structure GLEY 1 LOGY 2.5/1

4.5

SAND, fine, well srted, ~10% dark grains (glu/shu rare but conspic) mica, scattered shell fragments 2-5mm mostly, some small burrows 1-3mm dia, generally homogeneous character from extensive bioturbation; ry slightly silty

color dk grayish green OLEY 1 5G-2.5/2

5.0

SAND, fine, well sorted, ~10% dk, unc. mica (more than above), scattered mg phos grains + bone frags; scattered small shell frags (some as above); generally homogeneous from bioturb. Some discrete burrows, more subvertical than subhoriz, more abet downward; slightly silty

color o/a

NO REC.

SAND, fine, mod well srted, some med grns, & unc. crs grains 4.0-5.0 ft; ~10 dk grains, some mica. Scattered med-crs sd size black (phos?) grains, esp. 4.0-5.0 ft; scattered but common shells, more whole shells than above, larger shells @ 1.5 & 2.5 ft; silty, probably more so than above; a few indistinct burrows, in the aptensive bioturb. from 4.0-5.0, shells more abet, esp. 4.0-4.2 & 4.5-4.8, incl. Turritella; appears greener than above

5.0 still dark grayish green GLEY 1 5G-2.5/2

DGSID

Ph22-39

LOCALID

Sussex SWF Core

Start Depth

[]

Stop Depth

[]

Coring Start Time

[]

Coring Stop Time

[]

Core Description

Feet

300
302
304
306
308
310
312
314
316
318
320

CORE 61
CORE 62
CORE 63
CORE 64

SAND, fine, well srt'd, ~10% dark grains, ^{trace} mica, a few med black grains (phos); watery, somewhat silty; common burrows & bioturbation; small shells (2-5 mm *Mulinia* type, small *gastros*) & shell fragments (<1cm) are abd (more than above) also some friable amber fragments (? bone? shell?)
GLEY 2 4/10Y

dark greenish gray GLEY 4 10GY 3/1
-5.0 ← END OF DAY 7/30/08 ← ← ←

SAND, fine, well srt'd, ~10% dk grains, trace mica, abd small shells (2-5 mm *Mulinia* type + other thin bivalve frags; appears homogenous/bioturbated; slightly silty; gtz mostly sbang; GLEY 4 1/5 6Y

SAND, g/a, common shells (less than above), w/ a few larger shells (0.9, 1.6, 1.8 ft) thick, whitish; slightly siltier than above

SAND, g/a, scattered shells (less than above), some whitish & chalky; ext. bioturb w/ abd burrows, many clay-line, 1-3 cm dia; muddier & tighter sed than above, w/ silt & clay mixed in

SAND, fine, well srt'd, ~10% dk grains, trace mica, common 1-5 mm shell frags (mostly thin bivalves), a few black lignitic fragments; abd bioturb w/ mud lining / fill (caudally muddy sand)

SAND, g/a, but less shells, scattered small fragments; dark grains may approach 15% in places; core slightly muddier & more consolidated than above, w/ abd burrows highlighted by contrasts in mud content, many mud lined or filled; slightly more shell w/ lateral muddy sand; dark greenish gray GLEY 4 4/5 6Y

SAND, basically g/a - fine sand, abt muddy but somewhat watery in places; scattered (fr: 2%?) 1-2 mm dia frags of thin shells; vry bioturbated w burrows clear in places by contrast between clearer & muddier sand

dark green gray
GLEY 1 4/5 6Y

5.0

Drilling Notes:
[]

Date

& 131/08 7/30/08

Described by

PPM4, CC

DGSID

Ph22-39

LOCALID

Sussex SWF Core

Start Depth

Stop Depth

Coring Start Time

Coring Stop Time

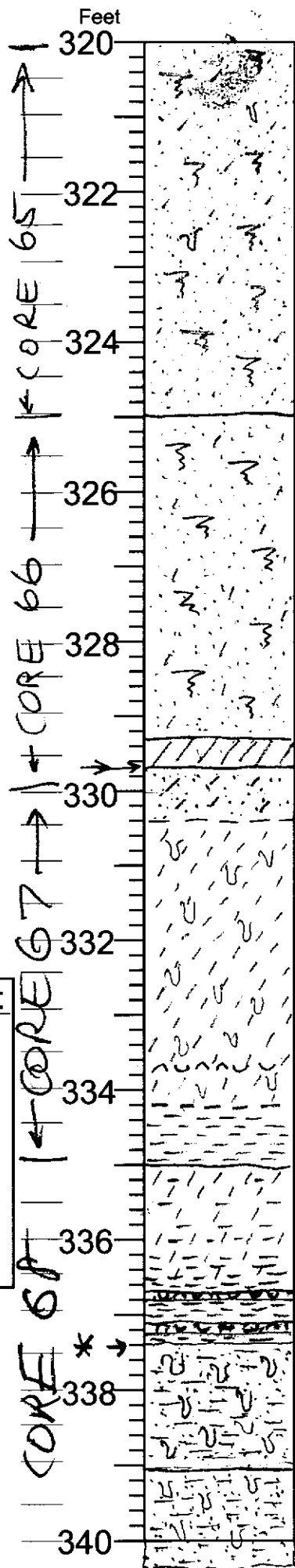
Drilling Notes:

Date

7/31/08

Described by

PPM/L



Core Description

SAND, fine, basically a/a - slightly less shell frags (uncommon), smaller (~1mm), slightly muddier; less distinct burrows, bioturbated extensively, though; possibly slightly more micaceous; some crs grain size phosphate
note - burrows are smaller, < 1cm

GLE Y 1 4/10 Y

5.1 SAND, fine, muddy, a/a but slightly muddier, incl. more clay; slightly more micaceous (r) more common (r) scattered small lignite frags; extensively bioturbated, but discrete burrows not very clear; and homogeneous

GLE Y 1 4/10 Y
dark, greenish gray

4.3 5.0 note - core 67 = 5.3 ft - 0.3 ft of run 66 (run 67)
SAND, a/a, but even muddier (not lignite seen) 0.14 (semi-distinct)

SILT, clayey, very sandy (almost even silt-clay mix?); extensively burrowed, mostly subhoriz (save possibly lamination?), w/ burrows from 2mm to 1cm dia; in places in burrow fill (or lams), thin wisps of clearer sand; sand is mostly fine, some vf, 5% dark grains, trace mica, scattered rare shells, mostly 2-3 mm frags of thin shells, w/ concentration between 4.0 & 4.1 ft dark olive gray SY 3/2

4.5 (transitional) CLAY, silty w/ old burrows filled by muddy fine sand, micaceous, 5-10% dark grains, dark gray SY 4/1

5.3/0 SILT, clayey, trans down to CLAY, silty, w/ less abd admixed sand downward in burrows. Sand incl >10% darks (glauc), more downward; micaceous (r) sand is in burrows; incr abd of shells downward (incl 1.7/1.8 Mr. bottom, 2 thin beds of vry shelly sand (1.7-1.8 & 2.1-2.25) - sd is f-crs, >10% darks (glauc) and 2.4-2.25 contains black ? phos grains; shells incl bivalve frags + Turritella; the clay between & below has little admixed sand, brownish color sharp

4.05 SAND, very silty & clayey, extensively burrowed, w/ some admixed micaceous CLAY in burrows or lams, plus a clay from 3.8-4.0' w/ burrows filled by the muddy sand; sand is fine, 10% darks (glauc, ohm, organics); greenish color; rare shells but larger, incl. Turritella; micaceous (r); horizontal "grain" to sect from burrows/lams.

5.25

Bottom see back

Core 68, 4.05-5.25 ft - less distinct lith break than 2.4, but still distinct.
very muddy (clay & silt)

SAND, fine, w/ burrowed zones (horiz burrows or burrowed lens) w/
concentrations of silty CLAY; brownish tone (compared to
greener above); uncommon frags of small thin shells
< 1cm dia; sand incl. more mica (1-2%?) and more
glauco grains (10-15%?); clay is brownish; besides evident clayey
burrows/burrowed sands, the muddy sand looks churned/bioturb/
homogenized

GLEY 1 3/104

DGSID

Ph22-39

LOCALID

Sussex SWF Core

Start Depth

[Empty box for Start Depth]

Stop Depth

[Empty box for Stop Depth]

Coring Start Time

[Empty box for Coring Start Time]

Coring Stop Time

[Empty box for Coring Stop Time]

Drilling Notes:

[Large empty box for Drilling Notes]

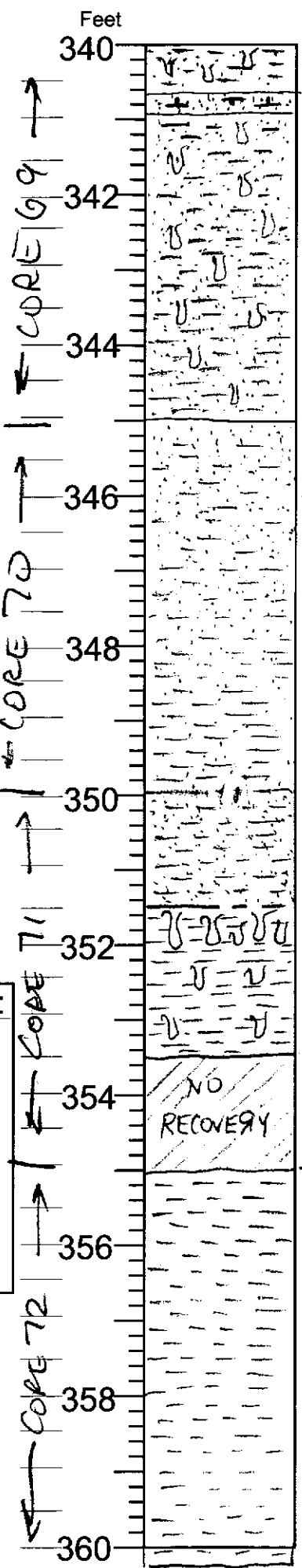
Date

7/31/08

Described by

PPMCL

3/5/04
4/5/04



Core Description

SAND, very muddy, a/a, w/ more admixed CLAY, brownish, silty, varying w/ bioturbation

0.65 SANDSTONE, fine, w/ lesser medium, mod-well sorted, 15-20% glauc (much is med); light greenish whitish cement matrix, calcareous (vigorous fizz w/ 10% HCl); ind. some shells (ind. Turnitella) colors: GLEY 1 5GY 4/1 brownish = 5Y 3/1 by dk gray

SAND, very muddy, similar to top of core; fine w/ 15-20% glauc (some of it med. gr.), trace to rare mica; admixed silty CLAY in burrows or burrow disrupted lam; most of it greenish clay, but some larger ones brownish clay; scattered unc-cm

← 5.2/0 shells (bivalves, scaphs, turnitellids)

SAND, very clayey/silty, w/ interlam/burrowed silty CLAY, transitioning downward to silty CLAY w/ interlam burrowed muddy SAND; sand fine, 10-15% glauc nr top, incr. to 15-20% glauc nr bottom; rare, scattered org grains; trace mica; scattered occ. of shell, mostly broken, a few intact small gastropods; entire core is extensively burrowed, w/ the clayey material being greenish (one of the brownish in the material above) GLEY 1 5GY 3/1 dark greenish gray

5.15/0 SAND, very clayey & silty, w/ subequal silty CLAY (sandy, impure); burrowed extensively, giving the lith variation; lith otherwise a/a ? exact contact not definite due to burrows

CLAY, slightly silty, somewhat waxy; contains some pearly shell material; abd burrows with lith from above burrowed down into this unit, upper 0.5' extensively burrowed ~ 1/2 cor (H.C. more) burrows, progressively less downward; some burrows w/ shells

3.5/0 NO RECOVERY

CLAY, silty, slightly sandy nr top, moderately sandy in places nr bottom; sand in clay is v-f; faint lamination (if not core artifact) disrupted by bioturbation; rare shells nr top, slightly more (rare-unc) nr bottom, ind. bivalve frags & gastropods; sand (esp. in slightly cleaner sd-filled burrows) ind. glauc, some of it med gr. greenish black 10Y 2.5/1

Last Core ~ 1330, 7/31/08

5.15