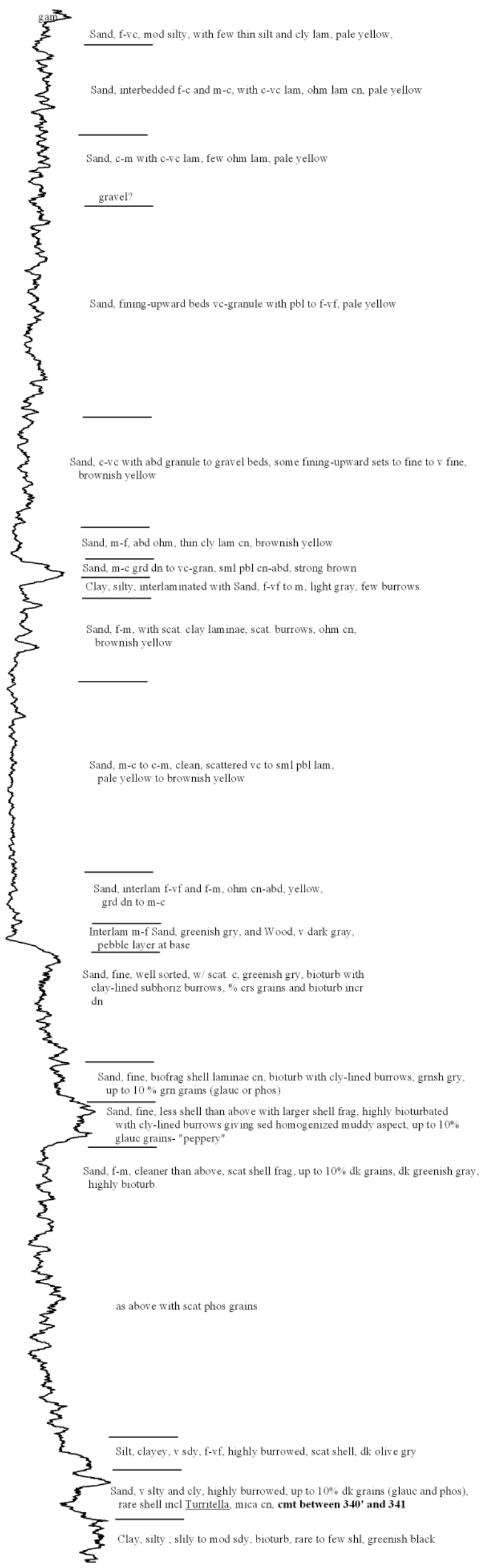
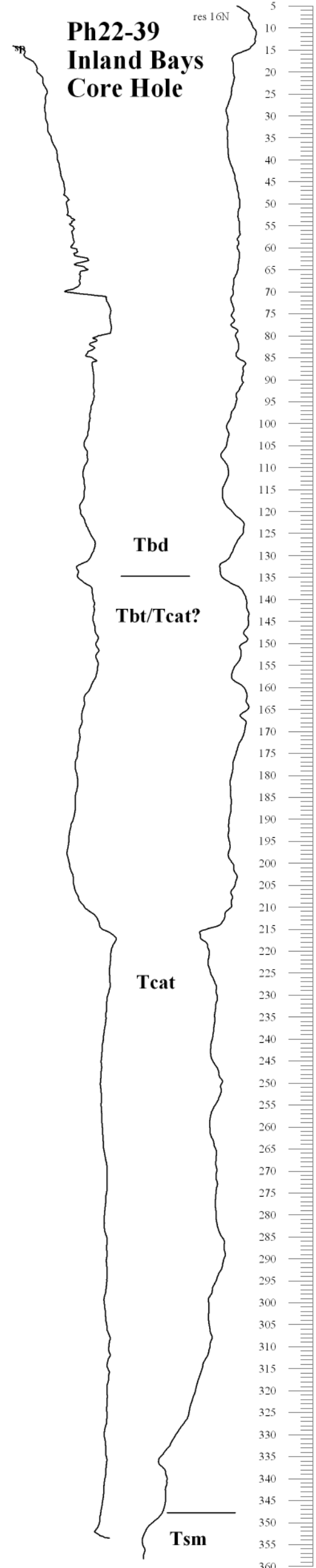


Ph22-39 Inland Bays Core Hole

res 16N



5 Sand, f-vc, mod silty, with few thin silt and cly lam, pale yellow,

10 Sand, interbedded f-c and m-c, with c-vc lam, ohm lam cn, pale yellow

40 Sand, c-m with c-vc lam, few ohm lam, pale yellow

50 gravel?

75 Sand, fining-upward beds vc-granule with pbl to f-vf, pale yellow

110 Sand, c-vc with abd granule to gravel beds, some fining-upward sets to fine to v fine, brownish yellow

Tbd

125 Sand, m-f, abd ohm, thin cly lam cn, brownish yellow

Tbt/Tcat?

135 Sand, m-c grd dn to vc-gran, sml pbl cn-abd, strong brown

140 Clay, silty, interlaminated with Sand, f-vf to m, light gray, few burrows

150 Sand, f-m, with scat. clay laminae, scat. burrows, ohm cn, brownish yellow

180 Sand, m-c to c-m, clean, scattered vc to sml pbl lam, pale yellow to brownish yellow

Tcat

210 Sand, interlam f-vf and f-m, ohm cn-abd, yellow, grd dn to m-c

215 Interlam m-f Sand, greenish gry, and Wood, v dark gray, pebble layer at base

225 Sand, fine, well sorted, w/ scat. c. greenish gry, bioturb with clay-lined subhoriz burrows, % crs grains and bioturb incr dn

250 Sand, fine, biofrag shell laminae cn, bioturb with cly-lined burrows, grnsh gry, up to 10% grn grains (glauc or phos)

260 Sand, fine, less shell than above with larger shell frag, highly bioturbated with cly-lined burrows giving sed homogenized muddy aspect, up to 10% glauc grains- "peppery"

270 Sand, f-m, cleaner than above, scat shell frag, up to 10% dk grains, dk greenish gray, highly bioturb.

300 as above with scat phos grains

335 Silt, clayey, v sdy, f-vf, highly burrowed, scat shell, dk olive gry

345 Sand, v silty and cly, highly burrowed, up to 10% dk grains (glauc and phos), rare shell incl *Turritella*, mica cn, **cmt between 340' and 341'**

Tsm

355 Clay, silty, slily to mod sdy, bioturb, rare to few shl, greenish black

