

DGSID

Pe21-04

LOCALID

GEO-19

Start Depth

0

Stop Depth

20

Coring Start Time

Coring Stop Time

Drilling Notes:

Described in lab  
dry samples  
07/09/15

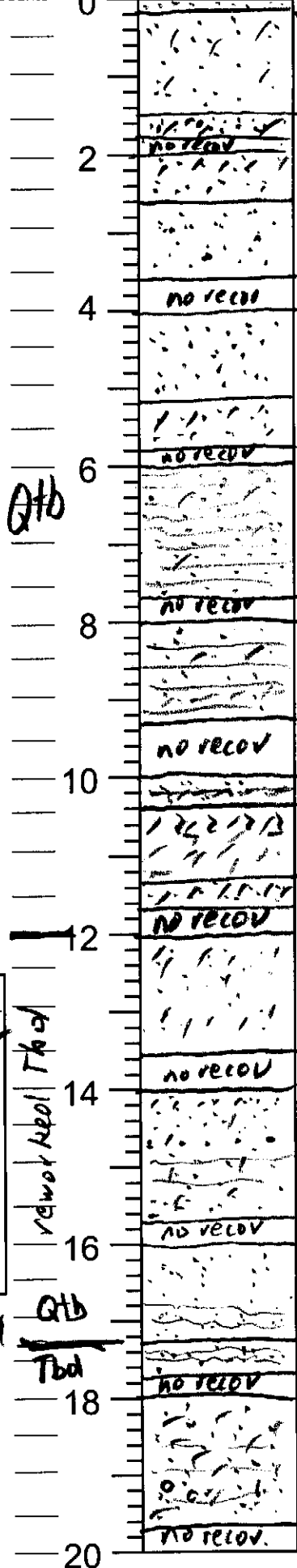
Date drilled

07/08/14

Described by

KWR

Blow Counts  
Feet



Core Description

0 SAND, f-c, silty, lt brnsh gry 2.5Y 6/2  
SAND, f-m-c abd, pale yl 2.5Y 7/4; str less;  
root @ 1.4, mod sily

1.5 SAND, m-f, few crs; mod sily; brnsh yl 10YR 6/6;  
1.9 few granules  
as above

16 SAND, f-m; clean; crs-gran cn; ohm cn;  
pale yl, 2.5Y 8/2

as above; yellow 2.5Y 7/6 from 0-0.5  
pale yl 2.5Y 8/2, 0.5-1.2,  
SAND, f-m; mod sily; yellow 2.5Y 7/6 w/  
1.8 pale yl mottles

SAND; inter lam f-vf + m-f; few c-vc lam;  
pale yl - yellow 1.52' vf-silt lam; all sily  
sily; lam thickness incr. dn.

1.7  
as above lam b/c ~1.5-2' thick, more  
vf-silt lam - white 2.5Y 8/1

1.35  
no recov

1.4 SAND, m-f; crs cn; brnsh yl; 10YR 6/6; w/  
wh vf-silt lam  
SILT mod cly; pale yl grad to lt gry 5Y 7/1  
1.5 org frag cn (7-8) 5Y 8/1

1.7 SAND, vf; sily; lt gry-wh; slily cly  
5Y 8/1 8/2 7/1

12 SAND, vf; silty; wh-pale yl; few lt gry mott.  
mottling-bioturb? few brnsh yl mott 10YR 6/6  
1.2-1.4

1.55  
no recov

14 SAND, vf; slily sily; lt gry sily lam. 1.5.  
0.75-.85 f-m w/ abd' ohm + vc-gran; ohm lam  
cn bll; wh 5Y 8/1; slily sily

1.75  
SAND, vf-f; slily-mod sily; ohm cn-abd  
white 10YR 8/1  
1.85-1.3 pale yl (7-8.5) + pale yl 8.5-1.3  
1.85-1.3 (pales?) few ohm lam bll

1.25 SAND, m-f; wh 5Y 8/1; crs cn; ohm few-cn  
crs in lam

SAND, m-f; mod sily (wh silt) matrix  
ohm lam cn; grad dn to m-crs;

no recov.

DGSID

Pe21-04

LOCALID

GEO-19

Start Depth

0

Stop Depth

20

Coring Start Time

Coring Stop Time

Drilling Notes:

Described in lab; colors dry  
07/09/15

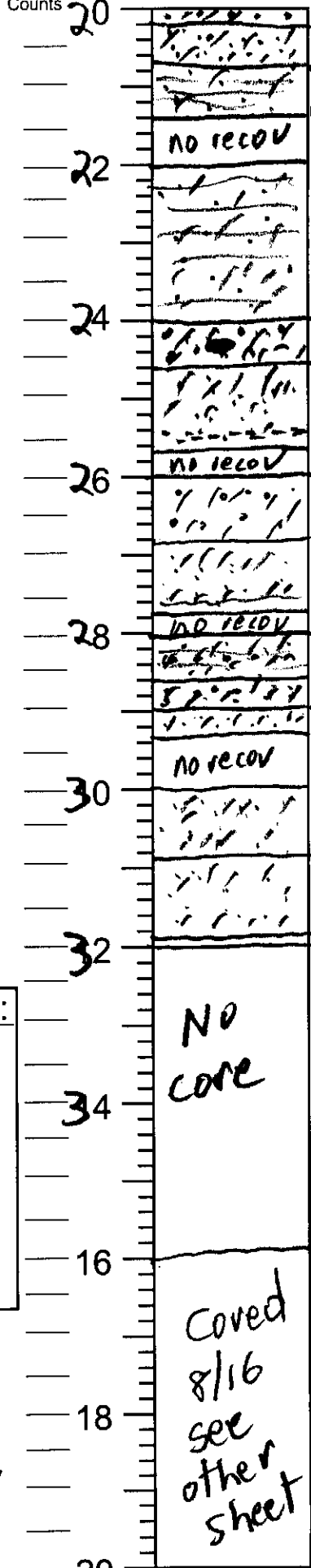
Date

07/08/14

Described by

KWR

Blow Counts  
Feet



Core Description

2 SAND; vc-gran; wh silt; silty-mod silty  
 5 SAND; v-f-crs; v silty; wh  
 1.4 SAND; m-crs; wh silt; silty; coarse silty lam  
 no recov  
 22 as above  
 24 SAND; gran-vc; wh silt; cly pl. 3.5  
 6 silty; wh  
 SAND; crs-m; v silty; wh silt; silty  
 cly lam. 5-1.6 (pale yl)  
 1.65 no recov  
 26 as above  
 .85 SAND; v-f; v silty; fcn; wh silt-pale yl  
 SY 872; ohm lam @ 1.7  
 1.75 no recov  
 28 SAND; f-m w/ crs lam; abd v-f; v silty;  
 .6 wh-pale yl  
 .9 SAND; c-vc; v silty; wh-pale yl  
 1.35 SAND; v-f; v silty; wh  
 no recov  
 30 SAND; v-crs-m-wh; v silty  
 .85 SAND; f-m; v-f, abd; silty wh  
 1.9

NO CORE

Cored  
8/16  
see  
other  
sheet

Blow Counts  
Feet

# Core Description

DGSID

Pe21-04

LOCALID

Geo 19

Start Depth

36

Stop Depth

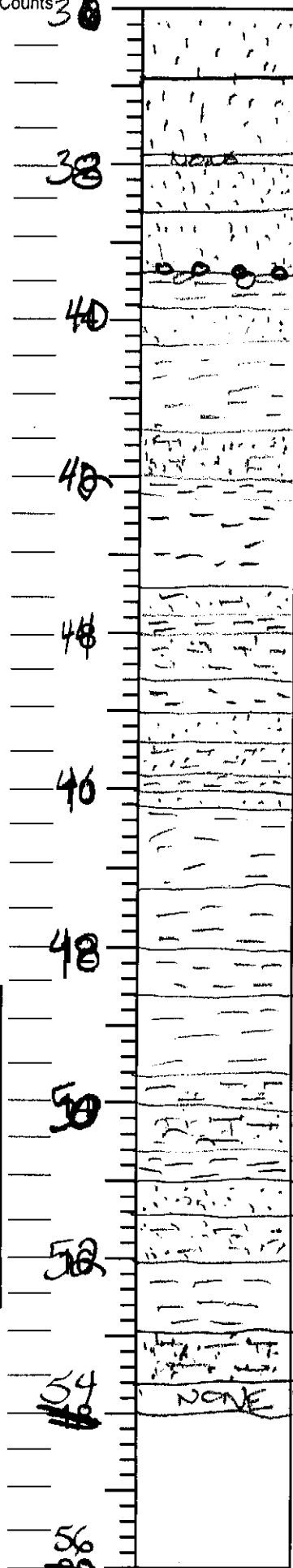
Coring Start Time

Coring Stop Time

Drilling Notes:

Date

Described by



m sand, light reddish gray (2.5YR) milky-silty matrix <sup>vs silty</sup>  
 some lt brn layering throughout  
 SILT, sdy vf, wh, pale y; sdy 7-9 F-vf

med sand, ~~fine~~ pale red (2.5YR 6/2)

m-c sand, some pebbles @ 1.5 ft. red (2.5YR 6/6)

clay, some pebbles at interface red (2.5YR 5/6) w/ some gray layering  
 red silty gray (2.5YR 6/7) w/ some silty (wash?)

clay Red (4/6 2.5YR) and pale red w/vf silty lam (2.5YR 6/2)

Red (2.5YR 4/6) clayey sand - finely lam with Fe & Mn oxides  
 clayey red (2.5YR 4/6)

clay, reddish gray (2.5YR 5/1) w/vf silty lam

clayey f-vf sand red (2.5YR 5/6)

clay, reddish brown (2.5YR 5/3) ~~sandy, silty, vs~~ reddish brn (2.5YR 5/4)

clay reddish gray (2.5YR 5/2) some orange layers

clayey sand, f, red (2.5YR 5/8) w mica

clayey vf f sand lt reddish brn (2.5YR 5/3)

reddish gray clay (2.5YR 5/6) @ clayey sand, f-vf yellowish red (5YR 5/6)

clay, some red layers but mostly reddish brown (5YR 5/3)

clay, reddish brown (5YR 4/4)

clay, wavy laminae, reddish brown (5YR 5/3) <sup>vs sdy-silt</sup>

clay, reddish brn (5YR 5/3) Mn Oxide

sandy clay yellowish red (5YR 5/6)

clayey sand reddish brown (5YR 4/4)

clay reddish brown (5YR 5/4)

rsandy clay reddish brown (5YR 4/4)

clayey sand reddish yellow (5YR 6/6)

clay, reddish brn (5YR 6/4) rusting

slightly silty matrix large pebbles at bottom, gravelly vs sand reddish yellow (5YR 6/8)

NONE

MAIL TO:

WATER SUPPLY SECTION  
 DIVISION OF WATER RESOURCES  
 89 KINGS HIGHWAY  
 DOVER, DELAWARE 19901  
 PHONE: 302-739-9944  
 FAX: 302-739-7764

STATE OF DELAWARE  
 DEPARTMENT OF NATURAL RESOURCES  
 AND ENVIRONMENTAL CONTROL

WELL COMPLETION REPORT MUST  
 BE RETURNED WITHIN 30 DAYS OF  
 CONSTRUCTION DATE

FORMATION LOG

PAGE 1 OF 1 PAGES

PLEASE PRINT OR TYPE - ILLEGIBLE OR INCOMPLETE FORMS WILL BE RETURNED

PERMIT# 219834 LOCAL ID# Pe 21-04

PROPERTY OWNER DOT Sussex

WELL CONTRACTOR DG5 LIC# 999

DESCRIPTION	TOP OF STRATA	BOTTOM OF STRATA
Sand, fine-medium with vf-silt lam, yellow-pale y	0	10
Silt, med. clayey, lt gry	10	12
Sand, v fine, w/ohm lam, white	12	18
Sand medium-fine interbedded w/ crs-v crs, very silty, white	18	39
Clay, silty, reddish gray, with vf sand lam	39	53
Sand: crs-vc w/ pbl lam, silty, white cly silt bd 88-90	53	90
Sand: m-f w/ crs lam, y/ish br n	90	120
SAND; vf-fine; gray	120	135

OTHER COMMENTS:

---



---



---



---

I HEREBY AFFIRM THE INFORMATION I HAVE SUBMITTED IS ACCURATE AND CORRECT

Signature of Well Driller In Charge [Signature] License# 686 Date 8/30/07