

DGSID

0h32-06

LOCALID

Start Depth

0

Stop Depth

20

Coring Start Time

1 pm

Coring Stop Time

2 pm

Drilling Notes:

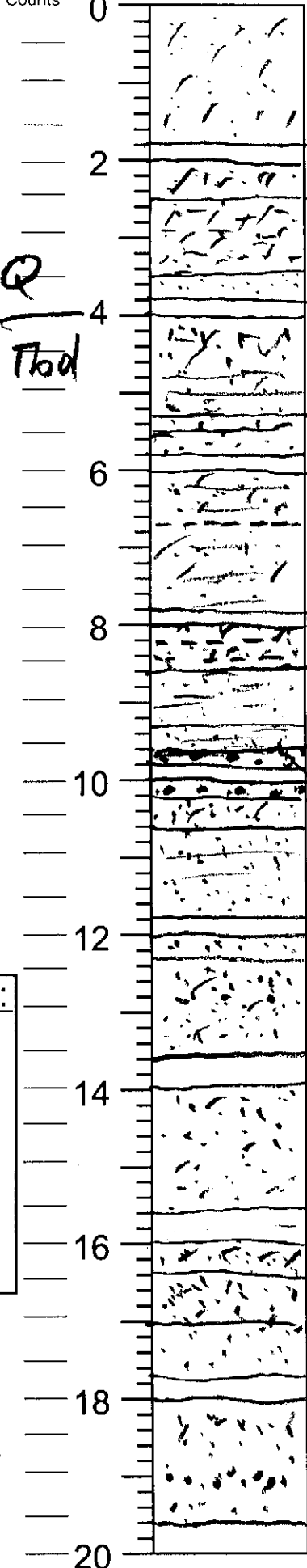
Date

6/18/08

Described by

KWR

Blow Counts
Feet



Core Description

SAND; vf, silty, grysh brn 2.5Y5/2
stress color grds to lt gry & lt, lsh
brn 2.5Y6/3; hard

1.8 sand as above

5 SILT; sdy, vf, mod cly lt olv brn 2.5Y5/6

1.3 SAND; vf, silty stly; lt olv brn

1.8 SAND; f-c, silty, mod lt gry & lt olive brn
lots wh chalky grains ohm lam b/l .7

1.3 SAND; f-vf, cly lam 1.4; pale yl 2.5Y7/3
mod sily

SAND; mod sily; vf-f pale yl 2.5YR 7/3
few ohm lam; cly lam .7-.75
cleaner, f-vf 1.7-1.8

1.8 SAND; f-vf, m cn-abol pale yl; few
cly lam

SAND; vf-f mod sily few cly sly lam

1.3 SAND; vf, silty, pale yl; few ohm lam

1.8 SAND; c-m, silty-mod sily pale yl
2 crs as above

1.6 SAND; f-c, mod sily; pale yl 2.5Y 7/3

SAND; f-vf; mod sily; pale yl; some m
lam

1.8 as above

2.5 SAND; m-c; f cn-abol; pale yl
few granule lam; silty-mod sily

1.6 as above

as above

1.6 as above

1.3 SAND; m-f, few ohm lam pale yl

SAND; c-m; vc cn-abol; mod sily pale yl

1.7 as above, m-c

as above

1.7 as above; vc-gran lam 1.0-1.1.5

as above

1.6 as above

as above