

UNIVERSITY OF DELAWARE
DELAWARE GEOLOGICAL SURVEY
REPORT OF INVESTIGATIONS No. 23

CRETACEOUS AND TERTIARY SECTION,
DEEP TEST WELL,
GREENWOOD, DELAWARE

BY
JOHN H. TALLEY

STATE OF DELAWARE
NEWARK, DELAWARE

JUNE, 1975

**CRETACEOUS AND TERTIARY SECTION,
DEEP TEST WELL,
GREENWOOD, DELAWARE**

By

JOHN H. TALLEY

Hydrogeologist

JUNE, 1975

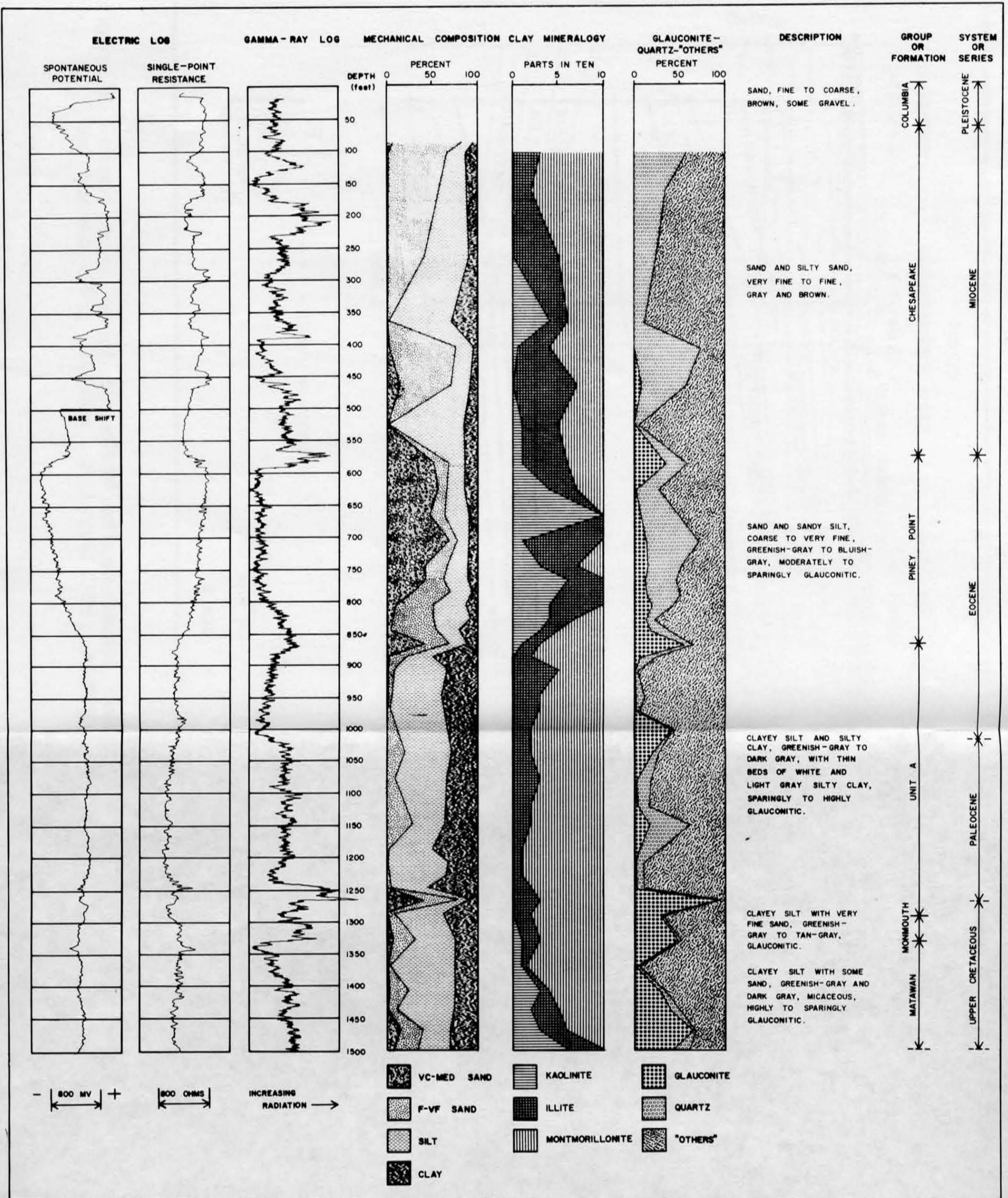


FIGURE 7. COMPOSITE LOG OF TEST WELL No. 13-3.