

Public Access Copy
DO NOT REMOVE
from room 208.

STATE OF DELAWARE
DELAWARE GEOLOGICAL SURVEY
REPORT OF INVESTIGATIONS NO. 2

HIGH-CAPACITY TEST WELL DEVELOPED AT THE AIR FORCE BASE

Dover, Delaware

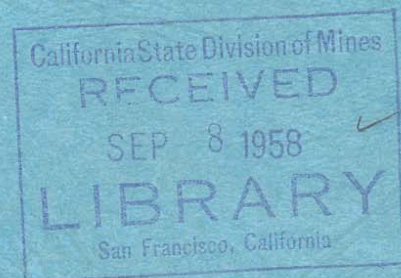
by

W. C. RASMUSSEN

J. J. GROOT

and

A. J. DEPMAN



Newark, Delaware
June, 1958

**HIGH-CAPACITY TEST WELL
DEVELOPED AT THE AIR FORCE BASE
DOVER, DELAWARE**

By

W. C. RASMUSSEN
District Geologist, U. S. Geological Survey

J. J. GROOT
State Geologist of Delaware

and

A. J. DEPMAN
Geologist, Corps of Engineers, U. S. Army

*Prepared cooperatively by the
Geological Survey
United States Department of the Interior
the Corps of Engineers
United States Army
and the
Delaware Geological Survey*

June 1958

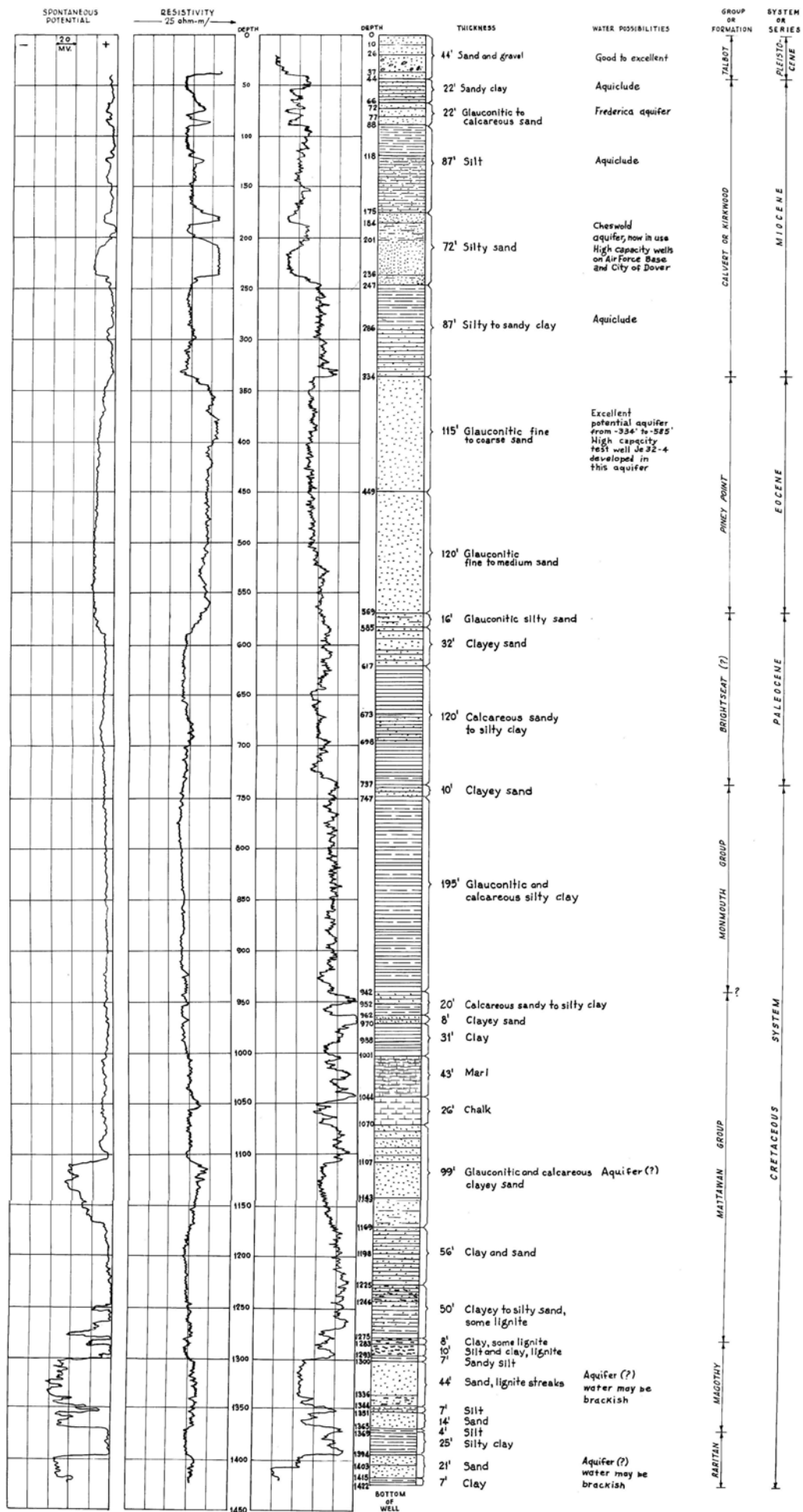
Logs of Je 32-4 , Dover Air Force Base, Delaware

ELECTRICAL LOG

GAMMA-RAY LOG

COMPOSITE LOG

INTERPRETATION



1.--Electrical, radioactivity, and composite log of Je 32-4.