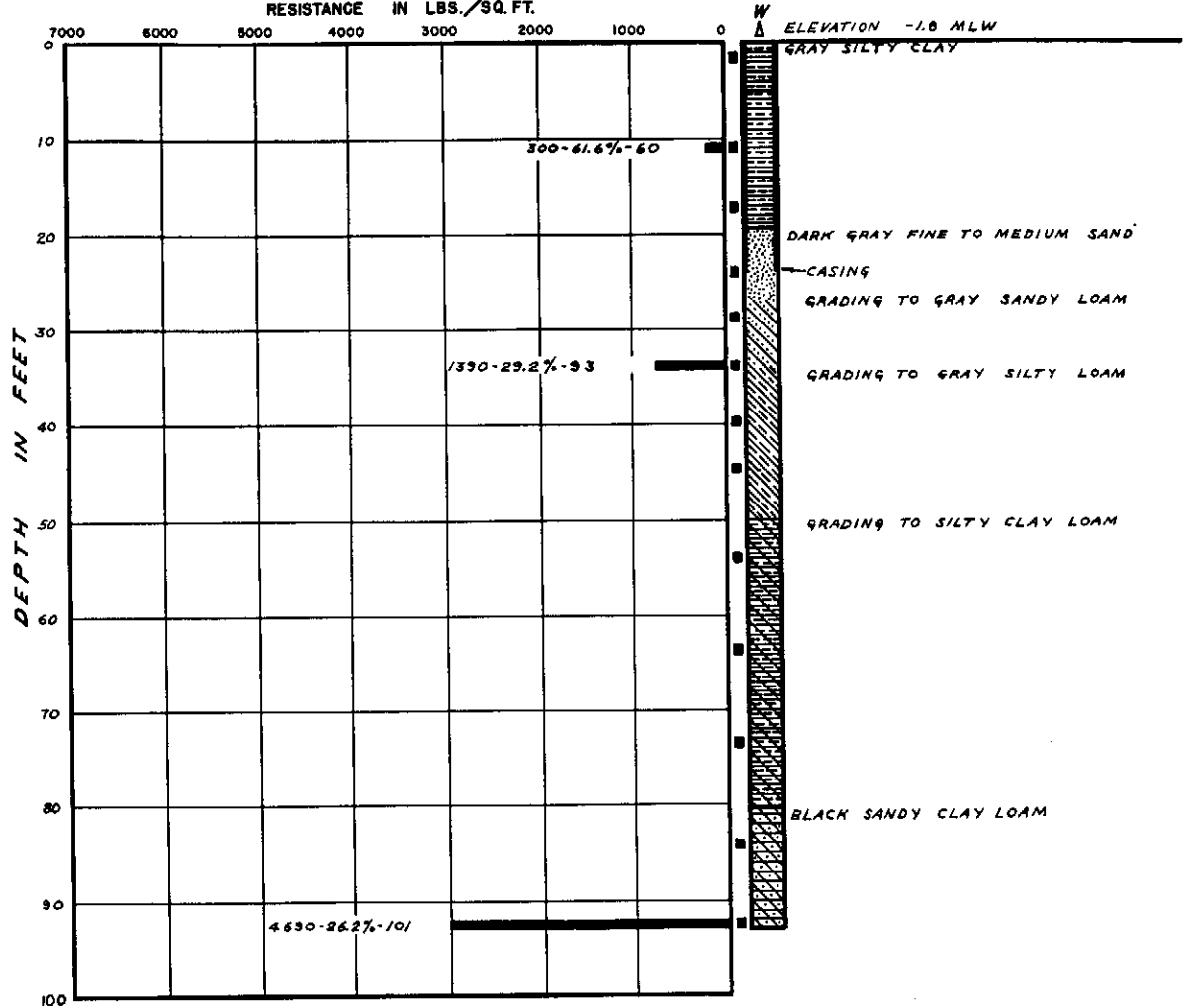


EC15-17

BORING 2 N 576, 420 E 450, 320

SHEARING STRENGTH AND FRICTIONAL RESISTANCE IN LBS./SQ. FT.



REVISIONS BY DATE TO GO BY DATE TO GO PLATE OF PLATES

FILE 163-AA BY B.S. DATE TO GO CHECKED BY TO GO APPROVED BY OFFICE ENGINEER

LOG OF BORINGS

DAMES & MOORE, Civil Engineers FOUNDATION INVESTIGATIONS - SOIL MECHANICS ENGINEERING

PLATE A-1-B