

Ec 13-98

I

Project: Motiva - Dissolved Phase Plume Investigation

Log of GWSB 6B

Project Location: Delaware City, Delaware

Ec 13-98

Sheet 1 of 2

Project Number: 20240412.W1000

Date(s) Drilled	10/5/2004	Logged By	Vince Piazza	Checked By	
Drilling Method	Hollow Stem Auger	Drill Bit Size/Type		Total Depth of Borehole	134.0 feet
Drill Rig Type		Drilling Contractor	Walton Corporation	Surface Elevation	32.30
Groundwater Level(s)	Not Measured	Sampling Method(s)		Hammer Data	
Location	Delaware City Refinery - Soy Field	Borehole Completion	Cement & Bentonite		

Elevation, feet	Depth, feet	SAMPLES		Graphic Log	MATERIAL DESCRIPTION	FIELD NOTES
		Core Interval Lab Samples	Lab ID Number			
0	0				Topsoil	
					brown SAND and GRAVEL + trace SILT	
					orange-brown SAND + trace SILT	
10						
20					brown, silty CLAY + trace SAND	
					orange-brown, fine SAND + trace SILT	
20						
					brown, fine SAND and trace to little SILT	
30						
40						
50						
60						

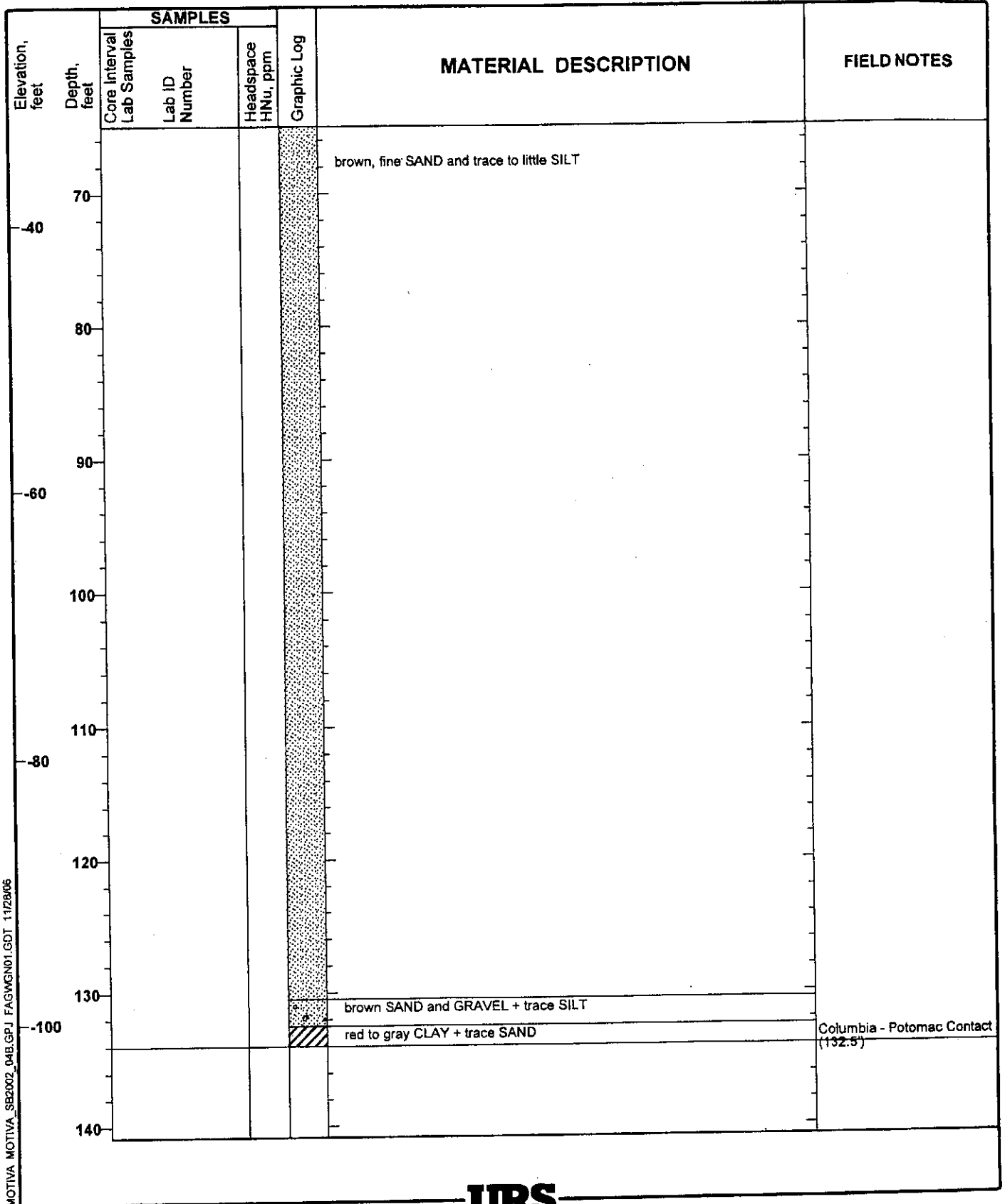
MOTIVA_MOTIVA_SB2002_04B.GPJ FAGWGN01.GDT 11/28/06



Project: Motiva - Dissolved Phase Plume Investigation
 Project Location: Delaware City, Delaware
 Project Number: 20240412.W1000

Log of GWSB 6B

Sheet 2 of 2



MOTIVA MOTIVA_SB2002_04B.GPJ FAGWGN01.GDT 11/28/06