
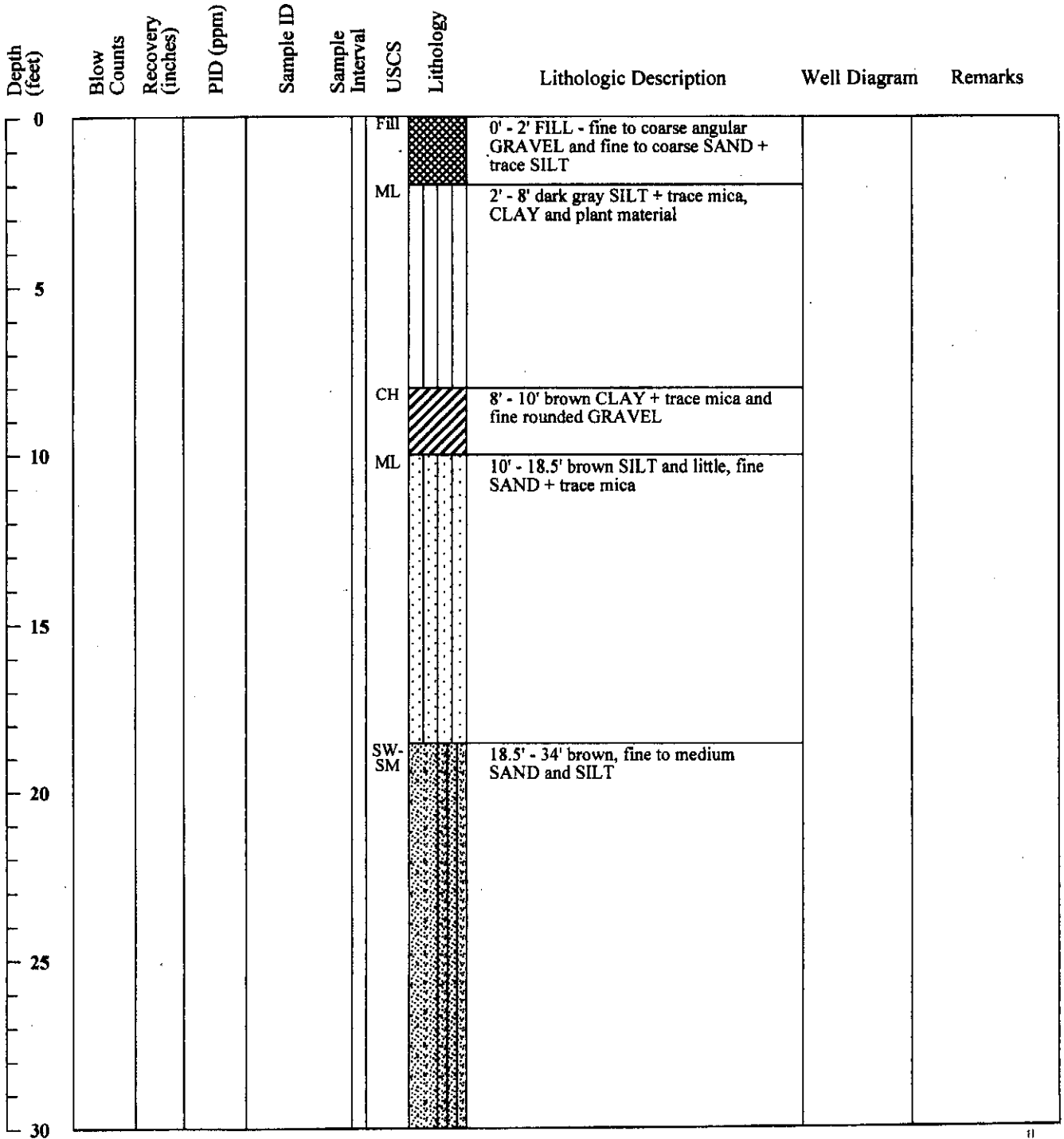


EC13-55

	MWH Americas, Inc. 335 Phoenixville Pike Malvern, Pennsylvania 19355	Boring ID: 11 EC13-55 Page 1 of 2
	Project Name: from URS gINT database urs_excel_3_19_06.gpj Location: Delaware City, DE Project Number: Date Started: 10/4/2002 Date Finished: 10/4/2002 Drilling Method: Hollow Stem Auger Sampling Method: State Permit Number: NA	Boring Location: Delaware City - Crude South Drilling Company: Walton Corp (Gary Truver) Ground Elevation (ft/msl): 22.5 Total Depth (ft): 39.0' Boring Diameter (in): " Water Level During Drilling (ft/bgs): Weather Conditions: Logged By: Rob Thomas





Depth (feet)	Blow Counts	Recovery (inches)	PID (ppm)	Sample ID	Sample Interval	USCS	Lithology	Lithologic Description	Well Diagram	Remarks
30										
35				kmj		CH		34' - 39' dark gray, micaceous CLAY + trace fine SAND		
40										
45										
50										
55										
60										
65										