



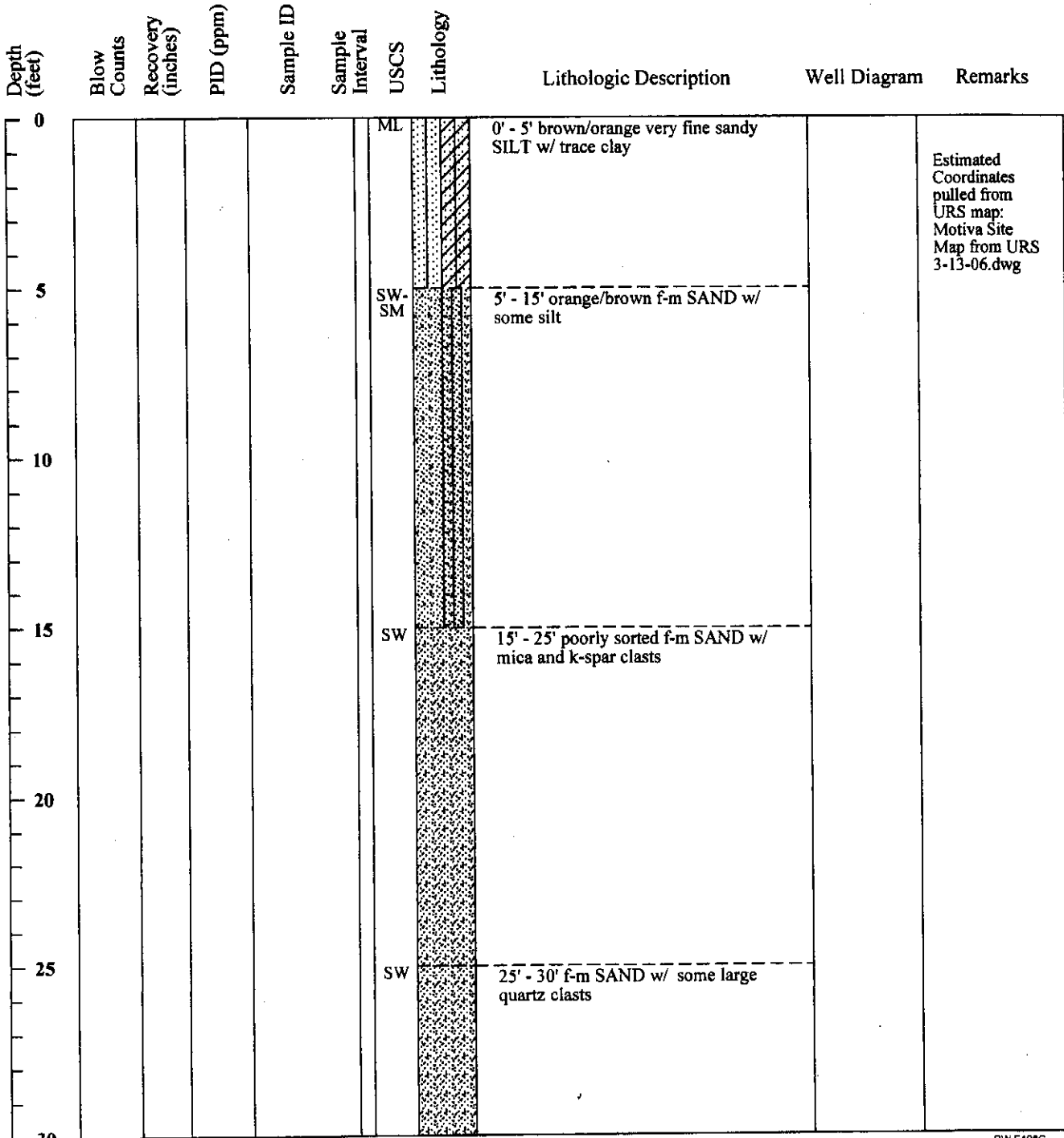
MWH Americas, Inc.
335 Phoenixville Pike
Malvern, Pennsylvania 19355

Boring ID: PW-E106C

Ec13-48

Page 1 of 4

Project Name:	from URS gINT database urs_excel_3_19_06.gpj	Boring Location:	South of Tank 1 Crude Tank Farm
Location:	Delaware City, DE	Drilling Company:	B. L. Myers Bros. (Paul Flynn)
Project Number:		Ground Elevation (ft/msl):	40.4
Date Started:	01/09/2006	Total Depth (ft):	130.3'
Date Finished:	1/11/2006	Boring Diameter (in):	4.875"
Drilling Method:	Mud Rotary	Water Level During Drilling (ft/bgs):	
Sampling Method:		Weather Conditions:	
State Permit Number:	NA	Logged By:	Nick Garner





EC10-40

Depth (feet)	Blow Counts	Recovery (inches)	PID (ppm)	Sample ID	Sample Interval	USCS	Lithology	Lithologic Description	Well Diagram	Remarks
30						SW		30' - 45' f-m SAND w/ some coarse quartz clasts		
35										
40										
45						SW		45' - 55' fine black and white SAND w/ some medium quartz and k-spar clasts		
50										
55						SW		55' - 60' f-c black and white SAND		
60										
65						SW		60' - 70' f-m white SAND w/ some black sand		

EC13-48



MWH Americas, Inc.
335 Phoenixville Pike
Malvern, Pennsylvania 19355

Boring ID: PW-E106C

Page 3 of 4

Depth (feet)	Blow Counts	Recovery (inches)	PID (ppm)	Sample ID	Sample Interval	USCS	Lithology	Lithologic Description	Well Diagram	Remarks
70						SW		70' - 75' f-m poorly sorted SAND w/ mica clasts		
75					SW	75' - 90' m-c poorly sorted subangular SAND and GRAVEL				
80										
85										
90						SW		90' - 95' f-m light poorly sorted SAND w/ some subangular gravel		
95						SW	95' - 100' f-m light poorly sorted SAND w/ some subangular gravel + mica and k-spar clast			
100						SP	100' - 105' medium SAND w/ mica clast			



EC13-416

Depth (feet)	Blow Counts	Recovery (inches)	PID (ppm)	Sample ID	Sample Interval	USCS	Lithology	Lithologic Description	Well Diagram	Remarks
105						SW		105' - 110' medium SAND w/ mica clast and medium angular quartz gravel		
110						GW		110' - 112' quartz, k-spar and mica angular f-m GRAVEL		
						SW		112' - 115' poorly sorted f-c SAND w/ some fine subrounded gravel		
115						SW		115' - 120' orange/brown medium angular SAND w/ trace fine gravel		
120						SP		120' - 125' orange/brown medium SAND w/ trace silt and fine angular gravel		
125						SW		125' - 130' orange/brown medium gravely f-m SAND		
				Qc1						
130						SP		130' - 130.25' fine white well sorted SAND		
				130'						
				Kpt						
135										