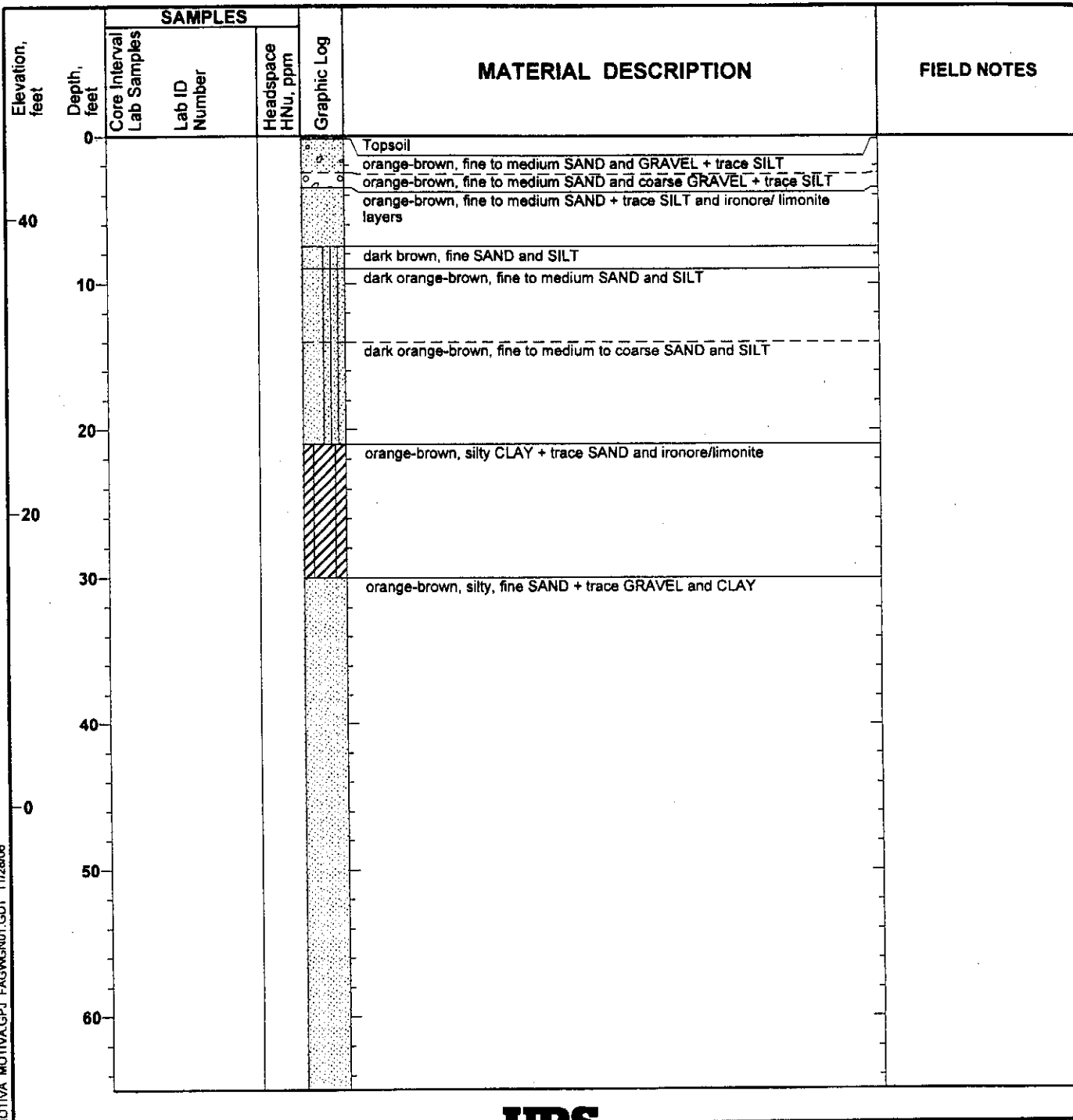


Date(s) Drilled: 8/26/2005	Logged By: S.J. Zahniser	Checked By:
Drilling Method: Hollow Stem Auger & Mud Rotary	Drill Bit Size/Type:	Total Depth of Borehole: 150.5 feet
Drill Rig Type:	Drilling Contractor: Walton Corporation	Surface Elevation: 45.65
Groundwater Level(s): Not Measured	Sampling Method(s):	Hammer Data:
Location: Delaware City Refinery - School	Borehole Completion: Cement & Bentonite Mix	



MOTIVA MOTIVA.GPJ FAGWGN01.GDT 11/28/06



Elevation, feet	Depth, feet	SAMPLES			Graphic Log	MATERIAL DESCRIPTION	FIELD NOTES
		Core Interval Lab Samples	Lab ID Number	Headspace HNu, ppm			
-20						orange-brown, silty, fine SAND + trace GRAVEL and CLAY	
	70						
	80						
-40							
	90						
	100						
-60							
	110						
	120						
-80							
	130					SAND, vf-f, gray to buff and CLAY	
	140					CLAY light gray and red with interbedded SAND, fine, gray to buff	Base of Columbia Formation

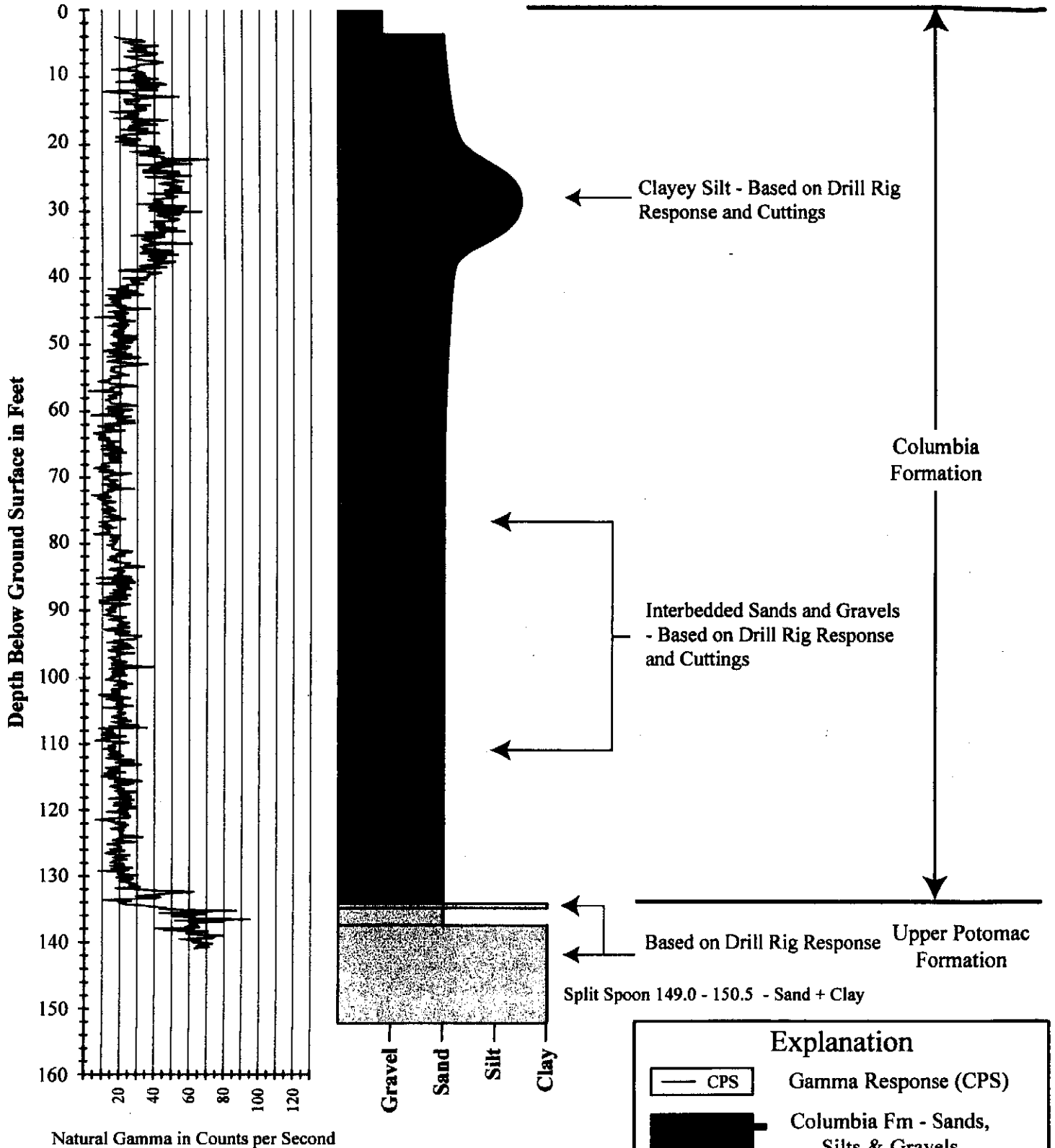
MOTIVA.MOTIVA.GPJ.FASWGN01.GDT.11/28/06

Project: Motiva - Dissolved Phase Plume Investigation 2005 Project Location: Delaware City, Delaware Project Number: 20240412.w1000	Log of GWSB 9CD Sheet 3 of 3
--	--

Elevation, feet	Depth, feet	SAMPLES			Graphic Log	MATERIAL DESCRIPTION	FIELD NOTES
		Core Interval Lab Samples	Lab ID Number	Headspace HNu, ppm			
-100						CLAY light gray and red with interbedded SAND, fine, gray to buff	
150		X	Potomac Formation				
	160						
-120							
	170						
	180						
-140							
	190						
	200						
-160							
	210						

MOTIVA.MOTIVA.GPJ FAGIENG1.GDT 11/28/06

Groundwater Screening Boring 9CD Natural Gamma Profile and Boring Log Delaware City Refinery



Explanation	
	Gamma Response (CPS)
	Columbia Fm - Sands, Silts & Gravels
	Upper Potomac Fm - Sands, Silts & Clays



MONTGOMERY WATSON

GEOLOGIC LOG

BORING OR WELL NO.:

9B, 9C, 9D

PROJECT:

LOCATION:

LOG RECORDED BY:

DATE:

GROUND SURFACE ELEVATION IN FEET:

SAMPLING INTERVAL (ESTIMATED):

DREL. RIG:

OPERATOR:

DEPTH (FEET)	SAMPLING			STRATIGRAPHY	REMARKS
	SAMPLE INTERVAL	SAMPLE NUMBER	RECOVERY		
94				9B 94-95.5: v. dark gray silt, t. clay, t. mica t. fine sand	
149				9CD 149-150.5: v. light gray ^{mottled} pink salmon fine sand & silt,	
120				9D 120-120.75: colors SA 9CD clay	