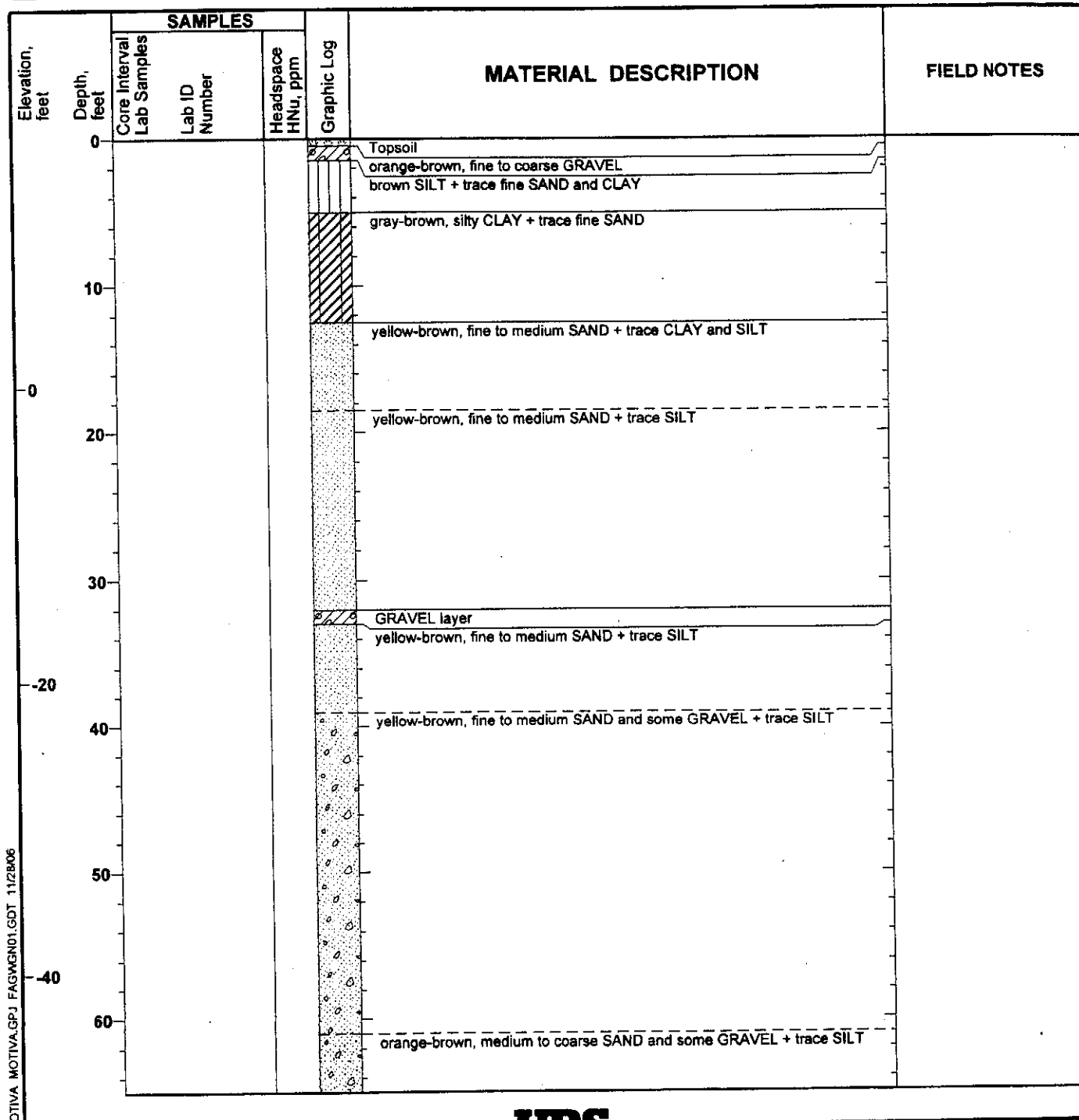


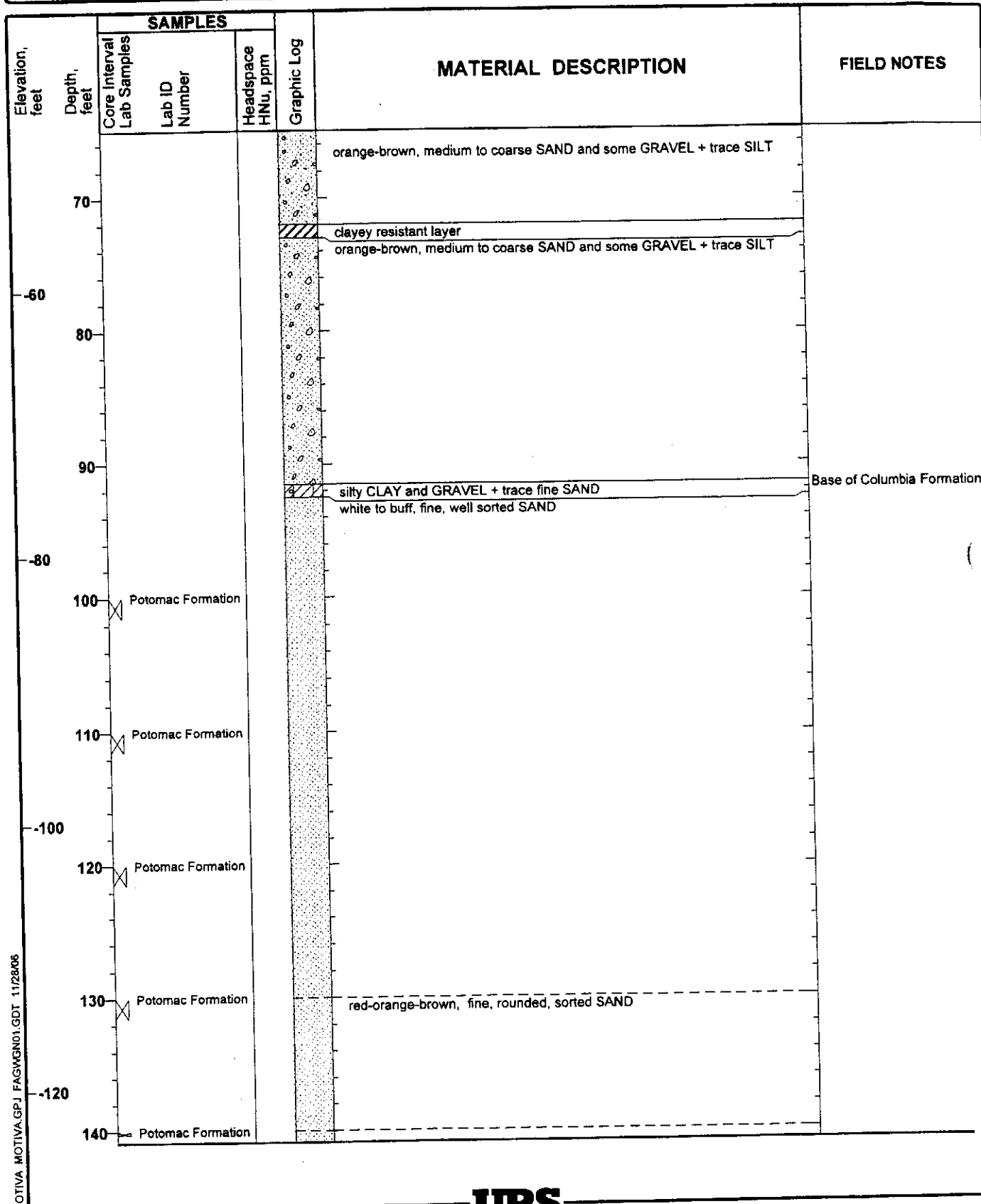
Project: Motiva - Dissolved Phase Plume Investigation 2005	Log of GWB 7C(org)
Project Location: Delaware City, Delaware	EC13-34 Sheet 1 of 3
Project Number: 20240412.w1000	

Date(s) Drilled	9/16/2005	Logged By	S.J. Zahniser	Checked By	
Drilling Method	Hollow Stem Auger & Mud Rotary	Drill Bit Size/Type		Total Depth of Borehole	180.5 feet
Drill Rig Type		Drilling Contractor	Walton Corporation	Surface Elevation	16.93
Groundwater Level(s)	Not Measured	Sampling Method(s)		Hammer Data	
Location	Delaware City Refinery - Soy Field	Borehole Completion	Cement & Bentonite Mix		



MOTIVA.MOTIVA.GPJ FAGWGN01.GDT 11/28/06



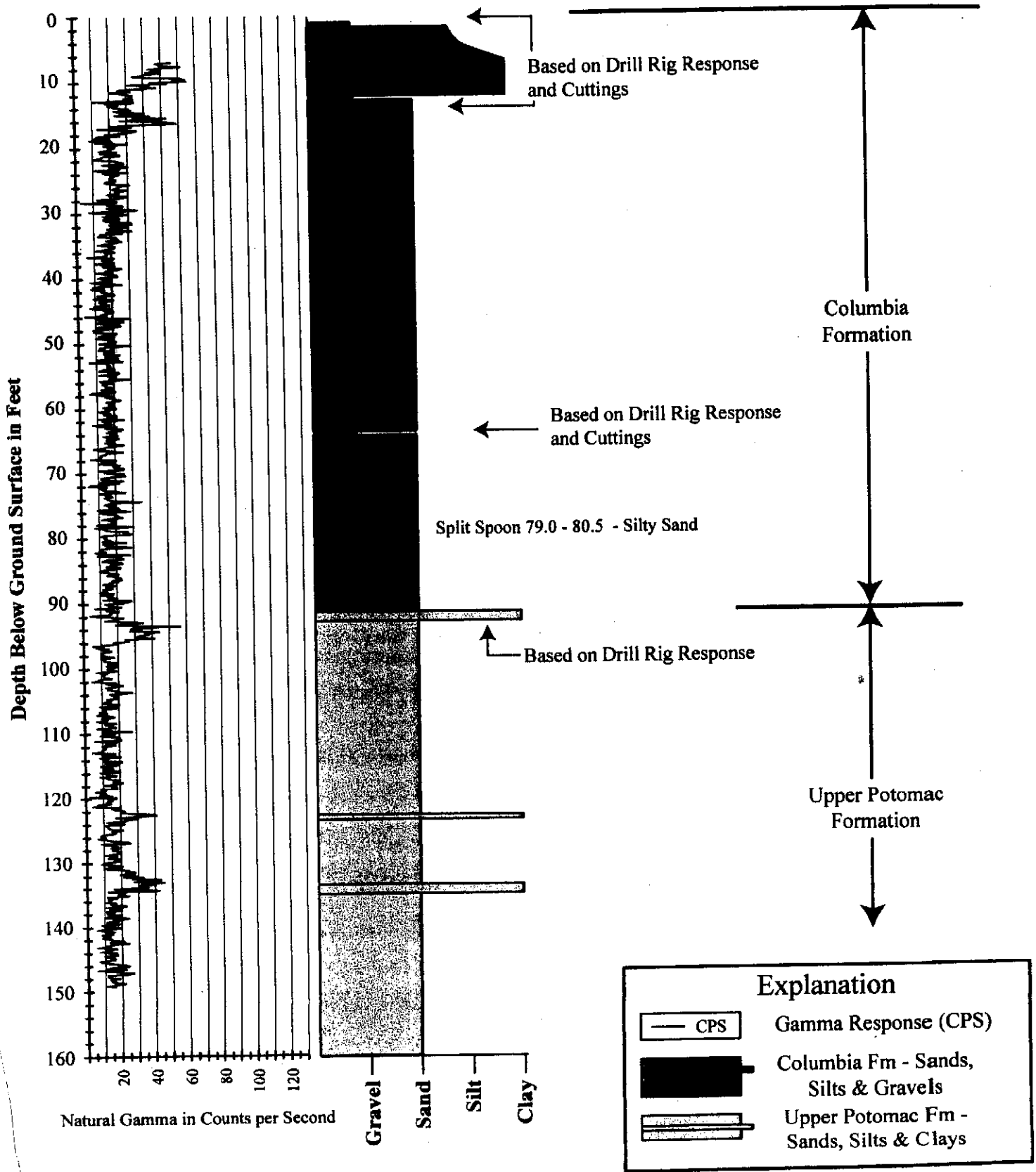


MOTIVA.GPJ FAGWEN01.GDT 11/28/06

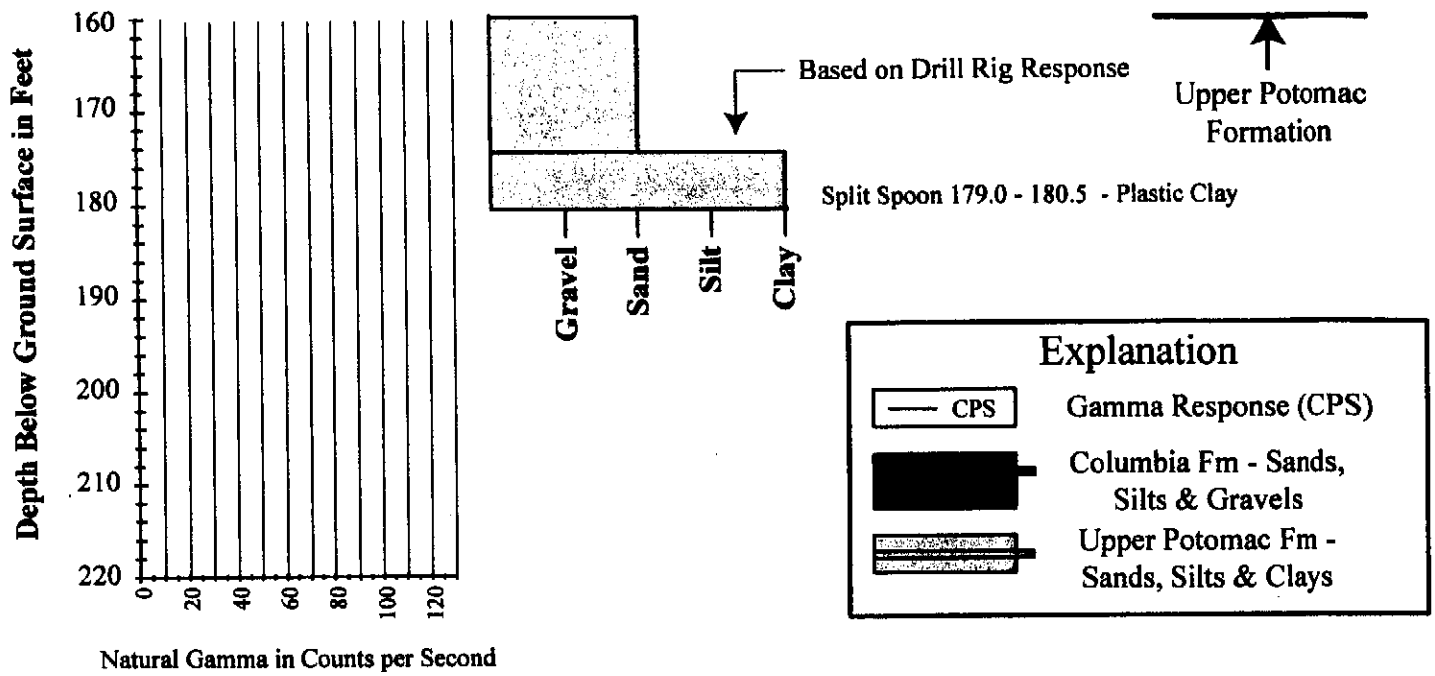
Elevation, feet	Depth, feet	SAMPLES			Graphic Log	MATERIAL DESCRIPTION	FIELD NOTES
		Core Interval Lab Samples	Lab ID Number	Headspace HNu, ppm			
					white to buff, fine, well sorted SAND		
-150							
-140							
-160					red-orange-brown, fine to medium SAND and some GRAVEL		
-170					white to buff, fine, well sorted SAND		
-160					white to gray CLAY and silty CLAY		
-180							
-190							
-180							
-200							
-210							

MOTIVA.MOTIVA.GPJ FAGWGN01.GDT 11/28/08

Groundwater Screening Boring 7C Natural Gamma Profile and Boring Log Delaware City Refinery



Groundwater Screening Boring 7C (cont.) Natural Gamma Profile and Boring Log Delaware City Refinery



7C East is same as 7D
 This log is not its original 7C

GEOLOGIC LOG

MONTGOMERY WATSON
 SPRING OR WELL NO.: 7C - original location PROJECT: _____
 LOCATION: 2nd attempt
 LOG RECEIVED BY: Gammie from 1st attempt DATE: _____
 GROUND SURFACE ELEVATION (IN FEET) _____ SAMPLING INTERVAL (ESTIMATED) _____
 DRILL RIG: _____ OPERATOR: _____

DEPTH (FEET)	SAMPLING			STRATIGRAPHY	REMARKS
	SAMPLE INTERVAL	SAMPLE NUMBER	RECOVERY		
0				100-101.5: light gray + yellowish brown churned up / mottled f. sand, f. silt + t. clay in some places, - - - - - gray silt, m. f. sand, t. f. sand lenses, t. m. c. sand	2 different lith., not sure which is top/bottom
5				110.0-110.5: f. sand light yellow, little m. sand, t. silt	
10				120-121.3: light yellow tan, f. sand, f. silt	
15				130-130.4: light yellow tan, f. sand, t. silt, mottled w/ oxidized orange brn	
20				140-140.25: ^{light} buff f. sand, t. silt	
25				160-160.5: light yellow tan f. sand, t. silt	
				170-170.3: ^{light} orange brn f. sand, t. silt, t. m. sand	
				179-180.5: brick red very fine sand to silt lenses in a clay, gray + brick red mottled clay silt of purple	