



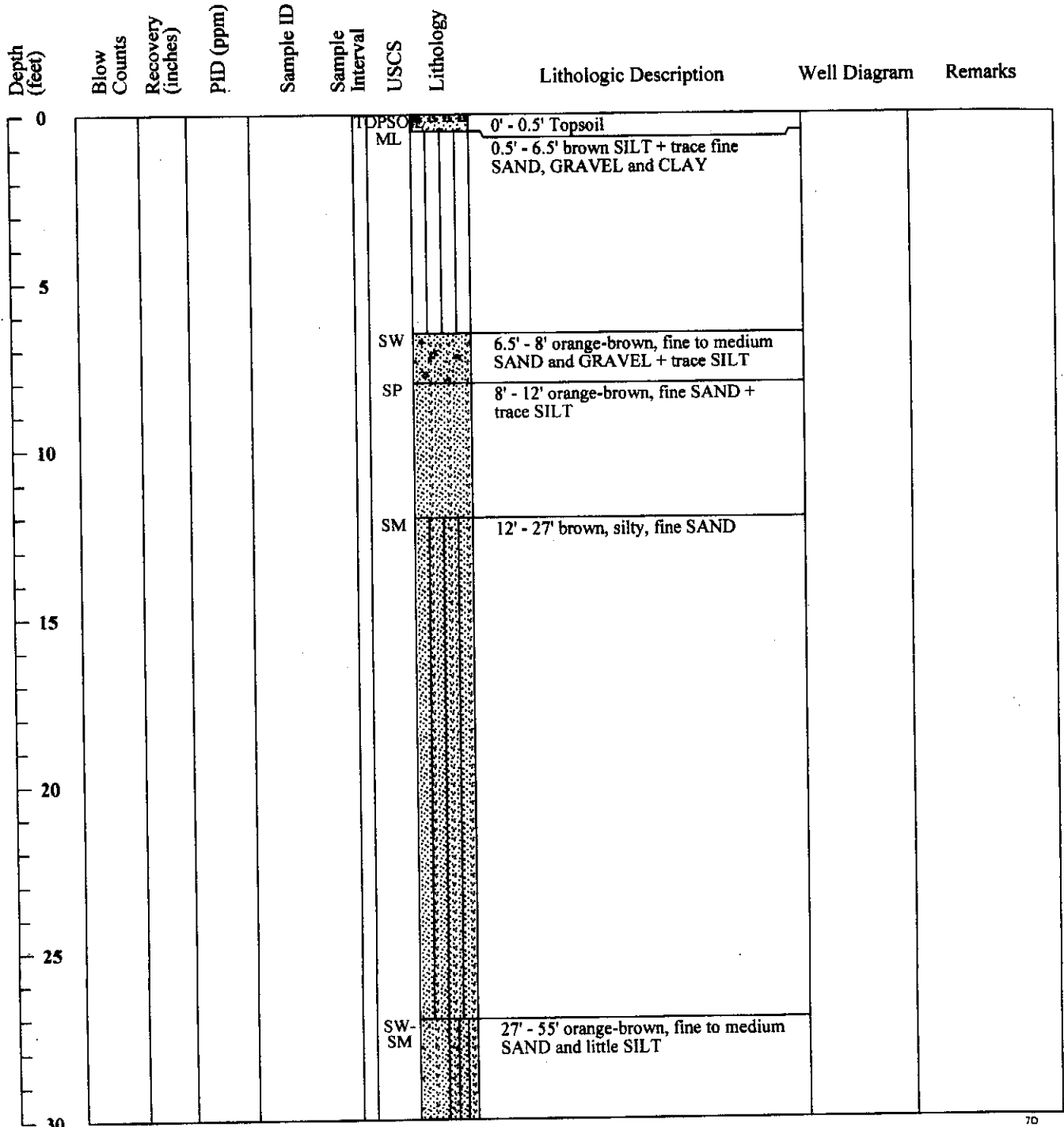
MWH Americas, Inc.
335 Phoenixville Pike
Malvern, Pennsylvania 19355

Boring ID: 7D

Eu13-33

Page 1 of 3

Project Name:	urs_excel_3_19_06.gpj COORDS ESTIMATED FROM URS CAD	Boring Location:	Delaware City Refinery - Soy Field
Location:	Delaware City, DE	Drilling Company:	Walton Corporation (Gary Truver)
Project Number:		Ground Elevation (ft/msl):	25.0
Date Started:	9/2/2005	Total Depth (ft):	85.5'
Date Finished:	9/6/2005	Boring Diameter (in):	"
Drilling Method:	Hollow Stem Auger	Water Level During Drilling (ft/bgs):	
Sampling Method:		Weather Conditions:	
State Permit Number:	NA	Logged By:	V. Piazza





Depth (feet)	Blow Counts	Recovery (inches)	PID (ppm)	Sample ID	Sample Interval	USCS	Lithology	Lithologic Description	Well Diagram	Remarks
30										
35										
40										
45										
50										
55						ML		55' - 66' dark gray, micaceous, clayey SILT+ trace SAND		
60								59.7' (MWH) Silty clay		
65										



MWH

MWH Americas, Inc.
335 Phoenixville Pike
Malvern, Pennsylvania 19355

Boring ID: 7D

Page 3 of 3

Depth (feet)	Blow Counts	Recovery (inches)	PID (ppm)	Sample ID	Sample Interval	USCS	Lithology	Lithologic Description	Well Diagram	Remarks
70								66' - 85.5' dark gray, micaceous, clayey SILT+ trace SAND		
75										
80										
85										
90										
95										
100										