
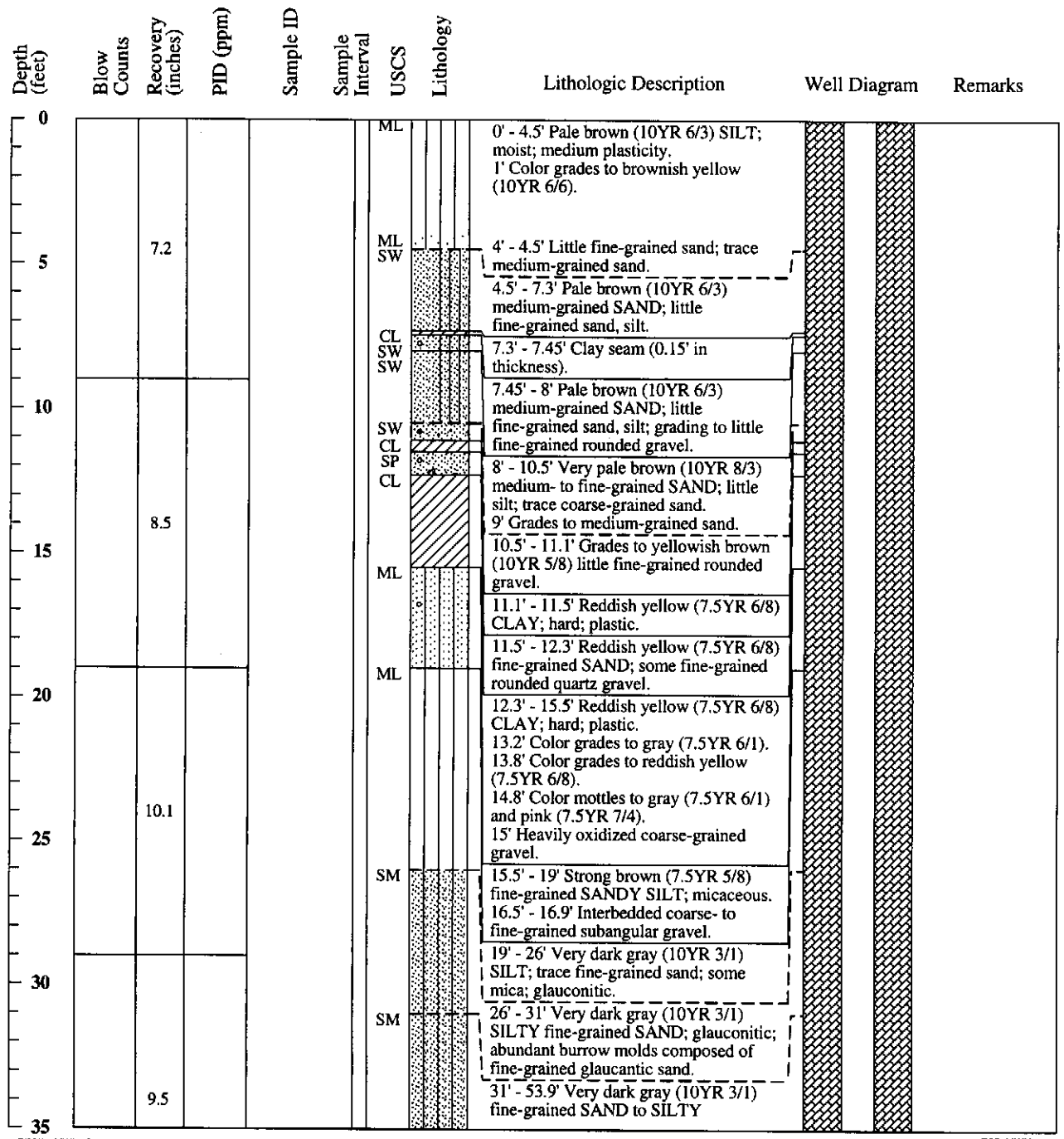


Ec13-114

	MWH Americas, Inc. 335 Phoenixville Pike Malvern, Pennsylvania 19355	<b>Boring ID: D65_MWH</b> Page 1 of 4	Ec13-114
	<b>Project Name:</b> 2009 Dissolved Phase Plume Continued Delineation <b>Location:</b> Delaware City, DE <b>Project Number:</b> <b>Date Started:</b> Unknown <b>Date Finished:</b> Unknown <b>Drilling Method:</b> Roto-Sonic <b>Sampling Method:</b> <b>State Permit Number:</b> NA	<b>Boring Location:</b> Delaware City Refinery <b>Drilling Company:</b> Bowser Morner <b>Ground Elevation (ft/msl):</b> <b>Total Depth (ft):</b> 135.0' <b>Boring Diameter (in):</b> 6" <b>Water Level During Drilling (ft/bgs):</b> <b>Weather Conditions:</b> <b>Logged By:</b> Joseph Remenicky	





**MWH**

MWH Americas, Inc.  
335 Phoenixville Pike  
Malvern, Pennsylvania 19355

### Boring ID: D65\_MWH

Page 2 of 4

Depth (feet)	Blow Counts	Recovery (inches)	PID (ppm)	Sample ID	Sample Interval	USCS	Lithology	Lithologic Description	Well Diagram	Remarks
35								fine-grained SAND; well sorted; some glauconite; micaceous.		
40								39.5' Increasing silt content.		
45		7.9								
50										
55		11.6				ML		53.9' - 111.8' Very dark gray (10YR 3/1) SILT; micaceous; glauconitic.		
60										
65		9.4								
70										
75		11.0								



Depth (feet)	Blow Counts	Recovery (inches)	PID (ppm)	Sample ID	Sample Interval	USCS	Lithology	Lithologic Description	Well Diagram	Remarks
80										
85		13.5								
90										
95		12.0								
100										
105		10.1						103.2' Trace fine-grained sand, fine-grained subrounded gravel.		
110										
115		10.5		Grab groundwater sample 116-117'bgs		SP		111.8' - 132' Dark yellowish brown (10YR 3/6) fine-grained SAND 112' Color grades to brownish yellow (10YR 6/8). 113.8' Color grades to very pale brown (10YR 8/4). 114.5' Color grades to yellowish brown (10YR 5/8). 117' Color grades to reddish yellow (7.5YR 7/6).		



Depth (feet)	Blow Counts	Recovery (inches)	PID (ppm)	Sample ID	Sample Interval	USCS	Lithology	Lithologic Description	Well Diagram	Remarks
120								119' Color grades to light yellowish brown (10YR 6/4).		
								120.5' Color grades to yellowish brown (10YR 5/6).		
125		11.0						123.5' Color grades to yellowish brown (10YR 5/8).		
								127' Color grades to light brownish gray (10YR 6/2).		
								127.7' Color grades to brownish yellow (10YR 6/6).		
130								128.7' - 131.7' Intermittant sections of partially lithofied fine-grained sand.		
								129' Color grades to red (2.5YR 5/6); trace medium-grained sand, silt.		
								131.4' Color grades to light yellowish brown (10YR 6/4).		
								131.7' - 132.1' Light gray (10YR 7/1) SILT; low plasticity.		
135		9.0						132.1' - 135.66' Pale brown (10YR 6/3), light gray (10YR 7/1), and very pale brown (10YR 8/4) mottled CLAY; hard; plastic.		
								132.6' - 133.3' Light yellowish brown (2.5Y 6/4) glaucanitic zone.		
								134.8' Color grades to light gray (10YR 7/1).		
140								135.66' - 136.2' Light gray (10YR 7/1) fine-grained SANDY SILT.		
								136.2' - 136.5' Red (10R 4/8) CLAY; hard; plastic.		
								136.5' - 137.1' Light gray (10YR 7/1) SILT.		
145								137.1' - 139' Red (10R 4/8) CLAY; hard; plastic.		
150										
155										
160										