



MWH Americas, Inc.
335 Phoenixville Pike
Malvern, Pennsylvania 19355

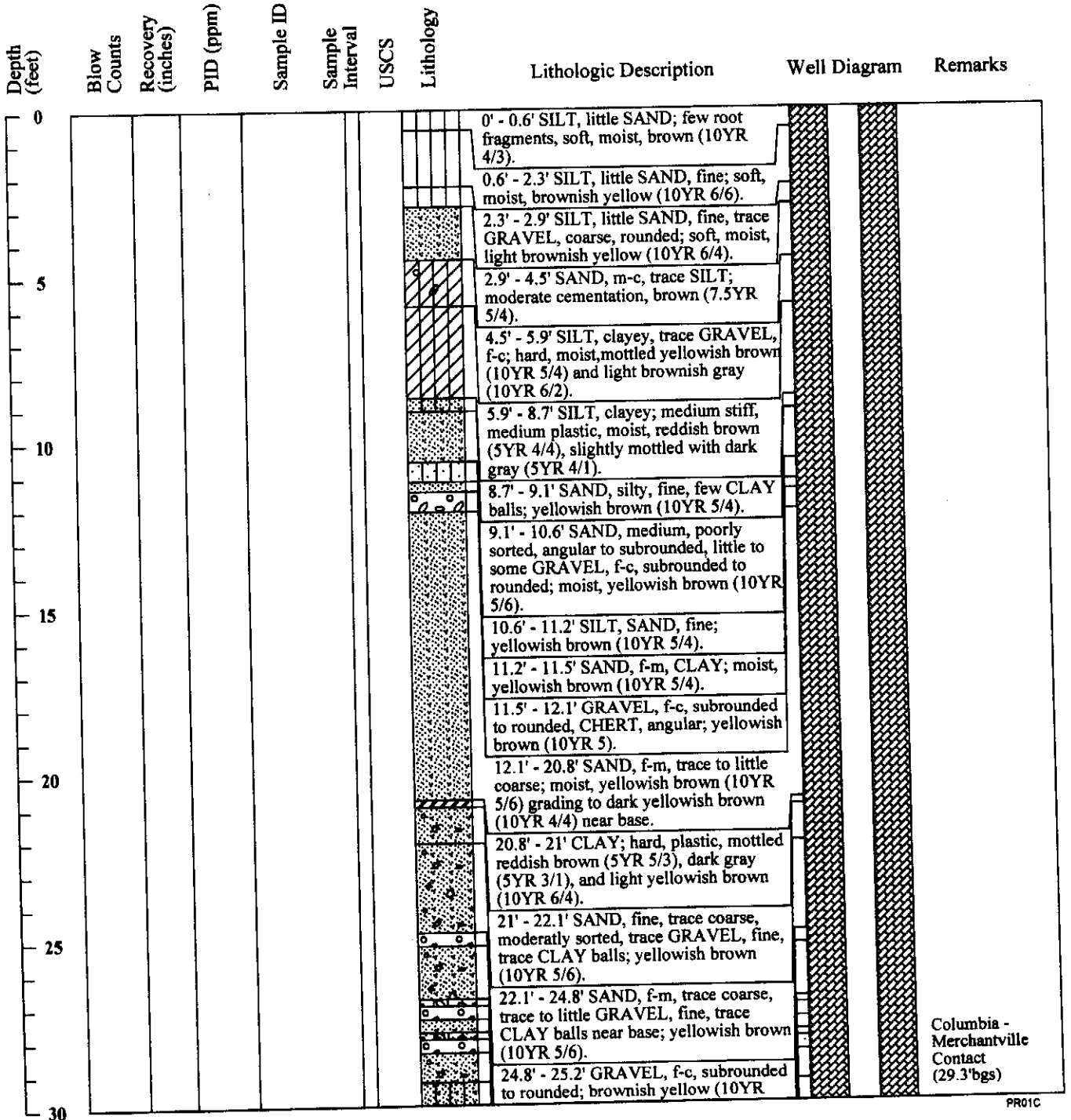
Boring ID: PR01C

Ecl2-46

Page 1 of 6

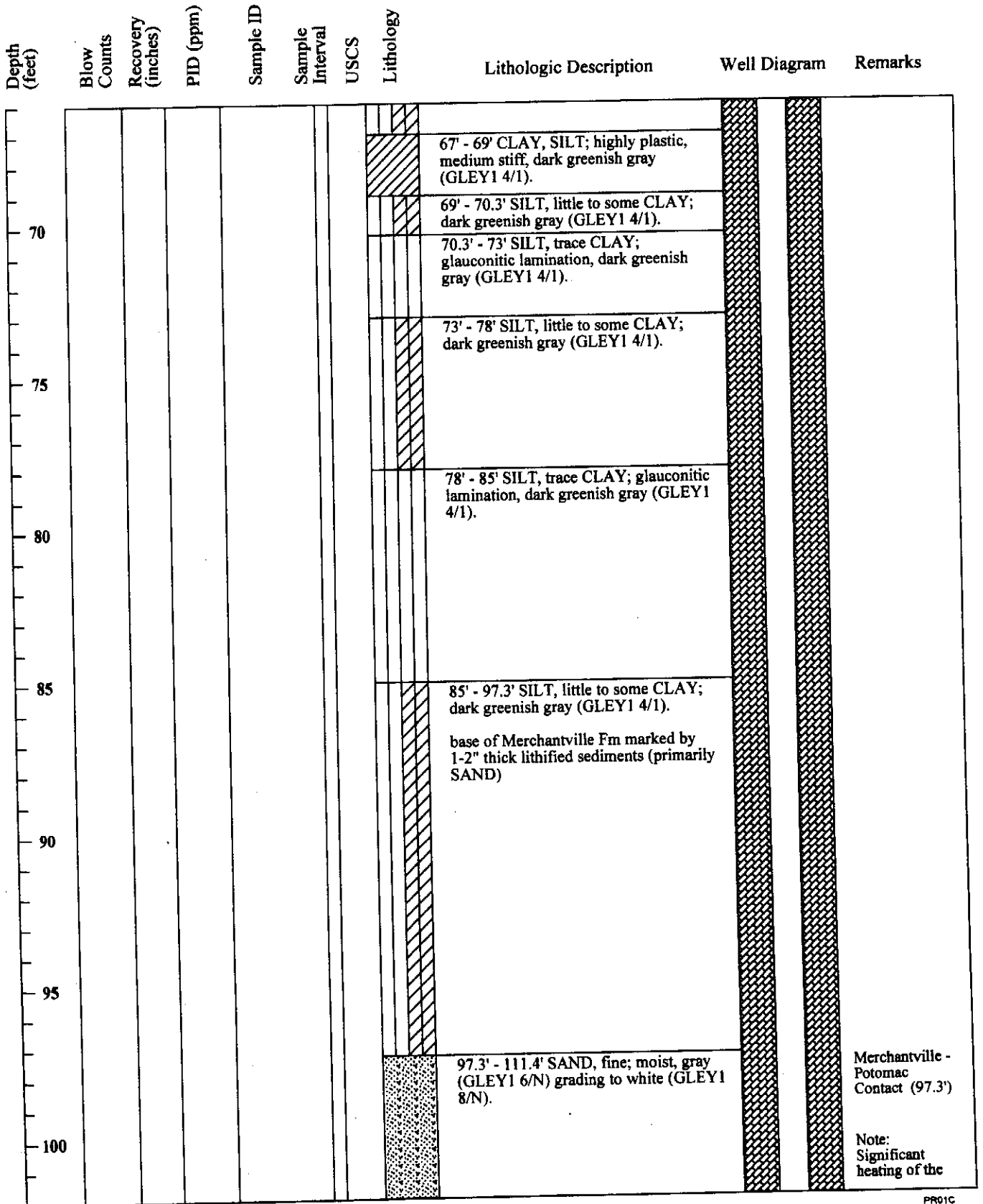
Project Name: from URS gINT DB pr-series 2006
Location: Delaware City, DE
Project Number:
Date Started: 07/13/2006
Date Finished: 7/26/2006
Drilling Method: Auger
Sampling Method:
State Permit Number: NA

Boring Location: Western Boundary
Drilling Company: ProSonic (Ben Grimm)
Ground Elevation (ft/msl): 55.4
Total Depth (ft): 197.0'
Boring Diameter (in): 7" - 6"
Water Level During Drilling (ft/bgs):
Weather Conditions:
Logged By: Stephen Zahniser





Depth (feet)	Blow Counts	Recovery (inches)	PID (ppm)	Sample ID	Sample Interval	USCS	Lithology	Lithologic Description	Well Diagram	Remarks
30								6/8).		
								25.2' - 26.8' SAND, fine, trace GRAVEL, fine, rounded; brownish yellow (10YR 6/8).		
								26.8' - 27' SILT, gravelly; weakly cemented, yellowish brown (10YR 5/6).		
								27' - 27.4' GRAVEL, f-m, subrounded to rounded, COBBLES, rounded; brownish yellow (10YR 5/6).		
35								27.4' - 27.8' SAND, f-m, trace coarse, angular; brownish yellow (10YR 5/6).		
								27.8' - 28' SILT, SAND, medium, GRAVEL, f-c, rounded, ironstone nodules, angular; dark yellowish brown (10YR 4/6).		
								28' - 28.4' GRAVEL, f-c, subrounded to rounded; dark yellowish brown (10YR 4/6).		
								28.4' - 29.3' SAND, f-m, GRAVEL, fine, trace coarse, rounded, trace ironstone nodules; dark yellowish brown (10YR 3/6).		
								29.3' - 33.5' SAND, very fine, silty; micaceous, soft, mottled yellowish red (5YR 4/6) with brown (10YR 5/3), grades to yellowish brown (10YR 5/6) at base.		
45								33.5' - 38.5' SILT, very fine, sandy; soft, grayish brown (2.5Y 5/2).		
								38.5' - 59' SILT, trace to some CLAY, trace SAND, very fine; micaceous, medium stiff, dark greenish gray (GLEY1 4/1).		
50								- Clay content increases with depth		
55										
60								59' - 67' SILT, little to some CLAY; dark greenish gray (GLEY1 4/1).		
65										





Depth (feet)	Blow Counts	Recovery (inches)	PID (ppm)	Sample ID	Sample Interval	USCS	Lithology	Lithologic Description	Well Diagram	Remarks
105										recovered soil samples occurred throughout the Potomac interval causing a potential increase in the observed PID readings.
110										
111.4' - 112.7'								CLAY, trace SAND, fine; plastic, stiff, light gray (10YR 7/1).		
112.7' - 113.8'								SILT, fine, sandy; light gray (10YR 7/1).		
113.8' - 115.8'								SILT, clayey; light gray (10YR 7/1).		
115										
115.8' - 117'								SILT; light gray (10YR 7/1).		
117' - 118'								SILT, fine, sandy; light gray (10YR 7/1).		
118.4' - 118.9'								SAND, very fine, SILT; light gray (10YR 7/1).		
118.9' - 119.3'								SILT, little SAND, very fine; light gray (10YR 7/1).		
119.3' - 119.5'								SAND, very fine, SILT; light gray (10YR 7/1).		
119.5' - 120.7'								SILT, SAND, fine; light gray (10YR 7/1).		
120										
120.7' - 121.3'								SILT, little CLAY; light gray (10YR 7/1).		
121.3' - 122.9'								CLAY, silty; light gray (10YR 7/1).		
122.9' - 126.2'								CLAY; mottled light gray (10YR 7/1) and reddish brown (5YR 5/3).		
126.2' - 127'								SILT, SAND, fine; light gray (10YR 7/1).		
127' - 136'								SAND, fine, trace SILT; very wet at top from drilling fluids, light gray (10YR 7/1) grading to reddish brown (5YR 6/4) at 134'.		
130										
135										
136' - 137'								CLAY, silty; highly plastic, light gray (10YR 7/1).		
137' - 138.3'								SAND, very fine, SILT;		



Depth (feet)	Blow Counts	Recovery (inches)	PID (ppm)	Sample ID	Sample Interval	USCS	Lithology	Lithologic Description	Well Diagram	Remarks
								very wet from drilling fluids, light gray (10YR 7/1).		
140								138.3' - 139.5' SAND, fine, trace SILT; light gray (10 YR 7/1).		
								139.5' - 139.7' CLAY, silty 1.5" interbedded with 0.5" fine SAND; light gray (10YR 7/1).		
								139.7' - 141' SAND, fine, trace SILT; light gray (10 YR 7/1).		
145								141' - 142' CLAY, silty; light gray (10YR 7/1).		
								- fine sand lens at 141.5'		
								142' - 142.3' SAND, fine, trace SILT; light gray (10 YR 7/1).		
								142.3' - 144' CLAY, silty; yellowish red (5YR 5/6).		
								144' - 149.2' SILT, clayey; yellowish red (5YR 5/6) mottled with weak red (2.5YR 5/2) at 145'.		
150								149.2' - 149.3' SAND, very fine, SILT; weak red (2.5YR 5/2) mottled with yellowish red (5YR 5/6).		
								149.3' - 153.3' SILT, trace SAND, fine; yellowish red (5YR 5/6).		
155								153.3' - 157' SAND, fine; yellowish red (5YR 5/6) grading to white (GLEYS 8/N) at 154.1'.		
								157' - 159.8' SAND, m-f; light gray (10YR 7/1).		
160								159.8' - 160.2' SILT, trace SAND, fine; light gray (10YR 7/1).		
								160.2' - 160.3' SAND, fine; light gray (10YR 7/1).		
								160.3' - 161.2' SILT; light gray (10YR 7/1).		
								161.2' - 161.3' SAND, fine; light gray (10YR 7/1).		
165								161.3' - 162' SAND, fine, silty; light gray (10YR 7/1).		
								162' - 162.3' SAND, fine; light reddish brown (5YR 6/3) grading to light gray (10YR 7/1).		
								162.3' - 162.7' SILT, CLAY; light gray (10YR 7/1).		
								162.7' - 162.8' SAND, fine; light gray (10YR 7/1).		
170								162.8' - 163.2' SILT; light gray (10YR 7/1).		
								163.2' - 163.3' SAND, fine; light gray (10YR 7/1).		
								163.3' - 163.8' SILT, SAND, fine; light gray (10YR 7/1).		



Depth (feet)	Blow Counts	Recovery (inches)	PID (ppm)	Sample ID	Sample Interval	USCS	Lithology	Lithologic Description	Well Diagram	Remarks
175								163.8' - 164.2' SILT, fine, sandy, CLAY; light gray (10YR 7/1).		
								164.2' - 165.2' SILT, clayey, SAND, fine; light gray (10YR 7/1).		
								165.2' - 165.4' SAND, very fine, SILT; light gray (10yr 7/1).		
								165.4' - 165.8' SILT, trace CLAY; light gray (10YR 7/1).		
180								165.8' - 182.3' SAND, vf - f; light gray (10YR 7/1) grading to very pale brown (10YR 7/4) at 177' and then to a mottled light gray (10YR 7/1) and yellowish red (5YR 6/6) at 181.8'.		
								182.3' - 183.2' SILT, fine, sandy; mottled light gray (10YR 7/1) and yellowish red (5YR 6/6) grading to light gray (10YR 7/1) near base.		
185								183.2' - 185.3' SAND, fine; light gray (10YR 7/1).		
								185.3' - 185.8' SAND, very fine, SILT; light gray (10YR 7/1).		
								185.8' - 187' SAND, fine; light gray (10YR 7/1).		
190								187' - 197' SILT, trace CLAY; gray (10YR 6/1).		
195										
200										
205										
210										