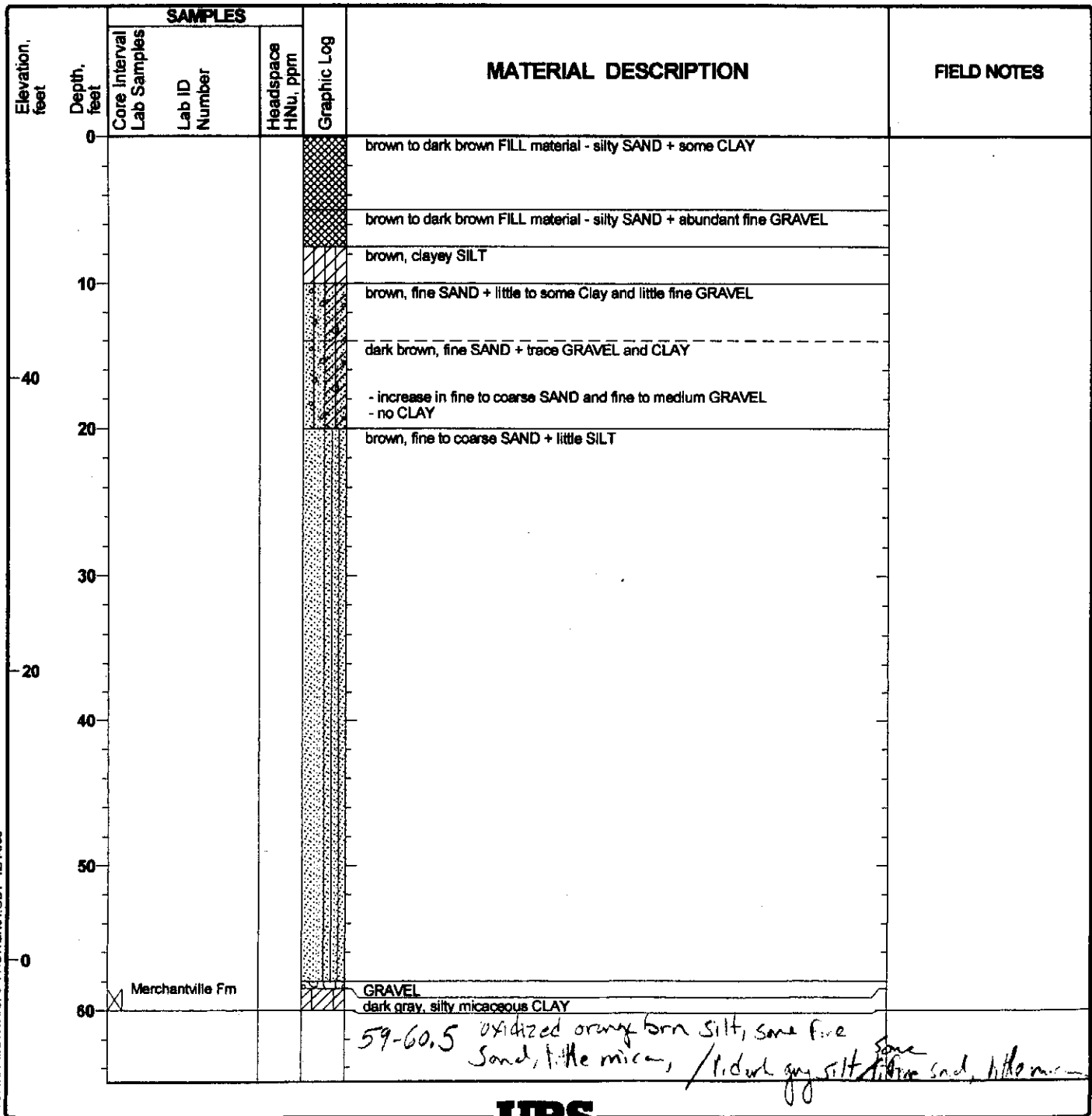


Ec12-45

Project: Motiva - Dissolved Phase Plume Investigation Project Location: Delaware City, Delaware Project Number: 20240412.w1000	Log of GWSB 1Z Sheet 1 of 1
---	---

Date(s) Drilled: 10/7/2006	Logged By: S.J. Zahniser	Checked By:
Drilling Method: Hollow Stem Auger	Drill Bit Size/Type:	Total Depth of Borehole: 60.0 feet
Drill Rig Type:	Drilling Contractor: Walton Corporation	Surface Elevation: 56.53
Groundwater Level(s): Not Measured	Sampling Method(s):	Hammer Data:
Location: Delaware City Refinery - Naphthalene	Borehole Completion: Cement & Bentonite Mix	



A:\OFINA_MOTIVA.GPJ_FAGWGN01.GDT_12/14/05

