



MWH Americas, Inc.
335 Phoenixville Pike
Malvern, Pennsylvania 19355

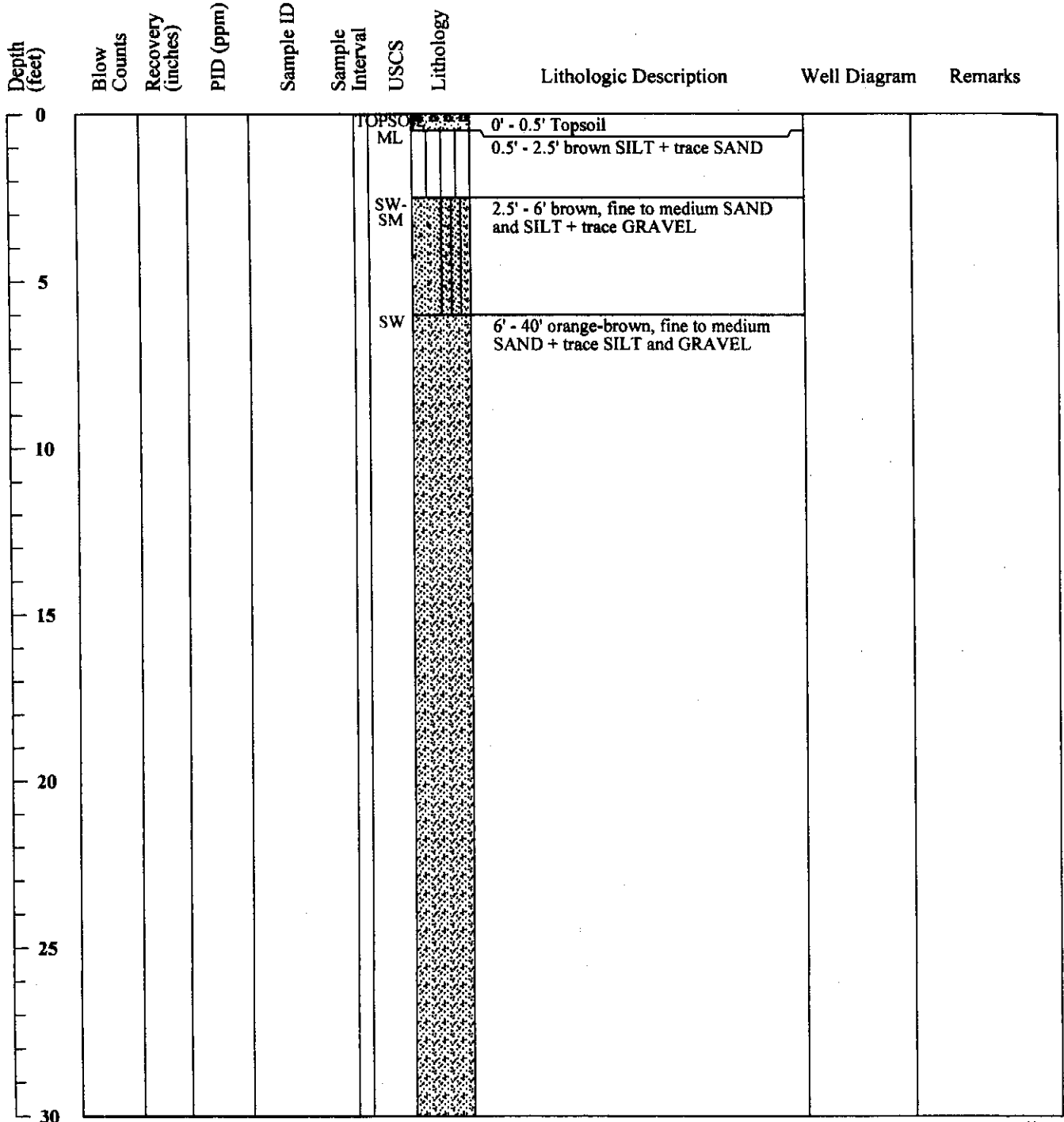
Boring ID: 9A

Ec12-41

Page 1 of 3

Project Name: from URS gINT database
urs_excel_3_19_06.gpj
Location: Delaware City, DE
Project Number:
Date Started: 7/18/2005
Date Finished: 7/22/2005
Drilling Method: Hollow Stem Auger
Sampling Method:
State Permit Number: NA

Boring Location: Delaware City Refinery - Soy Field
Drilling Company: Walton Corporation (Gary Truver)
Ground Elevation (ft/msl): 31.7
Total Depth (ft): 81.0'
Boring Diameter (in): "
Water Level During Drilling (ft/bgs):
Weather Conditions:
Logged By: S.J. Zahniser and V. Piazza





Depth (feet)	Blow Counts	Recovery (inches)	PID (ppm)	Sample ID	Sample Interval	USCS	Lithology	Lithologic Description	Well Diagram	Remarks
30										
35										
40						SW		40' - 45' orange-brown, fine to medium SAND + trace SILT, GRAVEL and ironstone/limonite layers		
45						SW		45' - 54' orange-brown, fine to medium SAND + trace SILT		
50										
55				57		CL		54' - 66' dark gray, silty, micaceous CLAY		
60				Km						
65										



Depth (feet)	Blow Counts	Recovery (inches)	PID (ppm)	Sample ID	Sample Interval	USCS	Lithology	Lithologic Description	Well Diagram	Remarks
70						CL		66' - 81' dark gray, silty, micaceous CLAY		
75										
80								79' (MWH) Silty Clay (CL)		
85										
90										
95										
100										

Groundwater Screening Boring 9A Natural Gamma Profile and Boring Log Delaware City Refinery

