



MWH

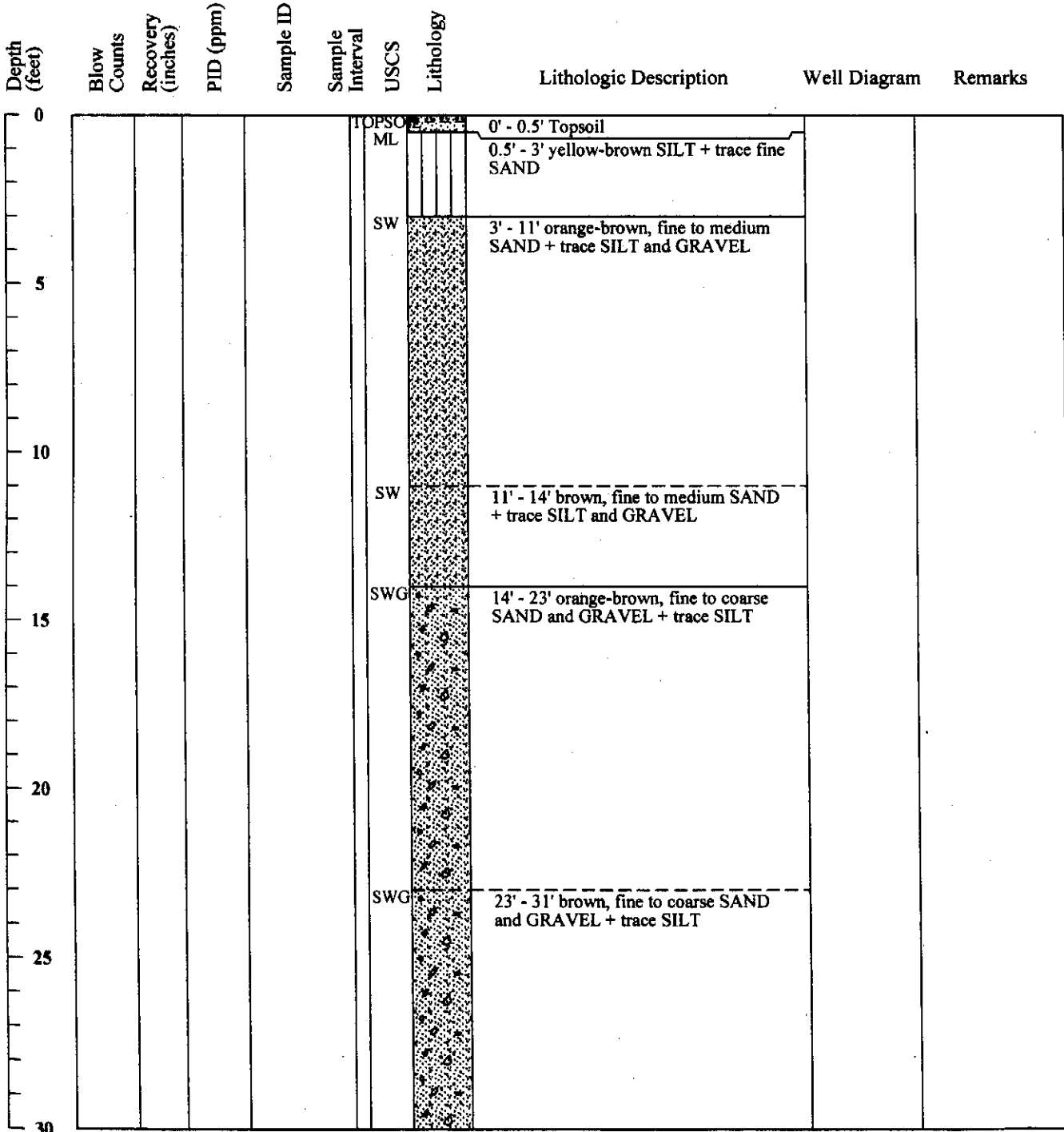
MWH Americas, Inc.
335 Phoenixville Pike
Malvern, Pennsylvania 19355

Boring ID: 2G

Ec 12-36

Page 1 of 3

Project Name: from URS gINT database urs_excel_3_19_06.gpj	Boring Location: Delaware City Refinery - Soy Field
Location: Delaware City, DE	Drilling Company: Walton Corporation (Gary Truver)
Project Number:	Ground Elevation (ft/msl): 51.5
Date Started: 10/5/2005	Total Depth (ft): 69.5'
Date Finished: 10/6/2005	Boring Diameter (in): "
Drilling Method: Hollow Stem Auger	Water Level During Drilling (ft/bgs):
Sampling Method:	Weather Conditions:
State Permit Number: NA	Logged By: V.Piazza



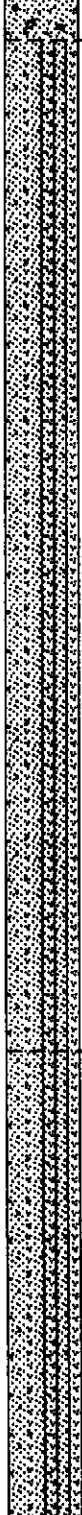
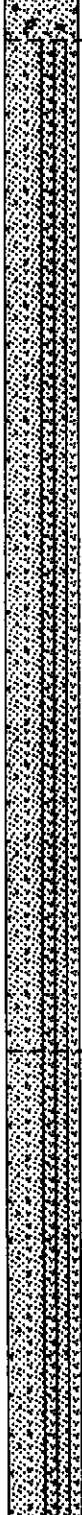


MWH

MWH Americas, Inc.
335 Phoenixville Pike
Malvern, Pennsylvania 19355

Boring ID: 2G

Page 2 of 3

Depth (feet)	Blow Counts	Recovery (inches)	PID (ppm)	Sample ID	Sample Interval	USCS	Lithology	Lithologic Description	Well Diagram	Remarks
30										
						SW-SM		31' - 55' brown, fine to medium SAND and little SILT		
35										
40										
45										
50										
55						SW-SM		55' - 66.5' brown, fine SAND and SILT		
60										
65										





MWH

MWH Americas, Inc.
335 Phoenixville Pike
Malvern, Pennsylvania 19355

Boring ID: 2G

Page 3 of 3

Depth (feet)	Blow Counts	Recovery (inches)	PID (ppm)	Sample ID	Sample Interval	USCS	Lithology	Lithologic Description	Well Diagram	Remarks
						CH		66.5' - 68.5' orange CLAY + trace SILT		
						CH		68.5' - 69.5' dark gray CLAY + trace mica and SILT		
70										
75										
80										
85										
90										
95										
100										