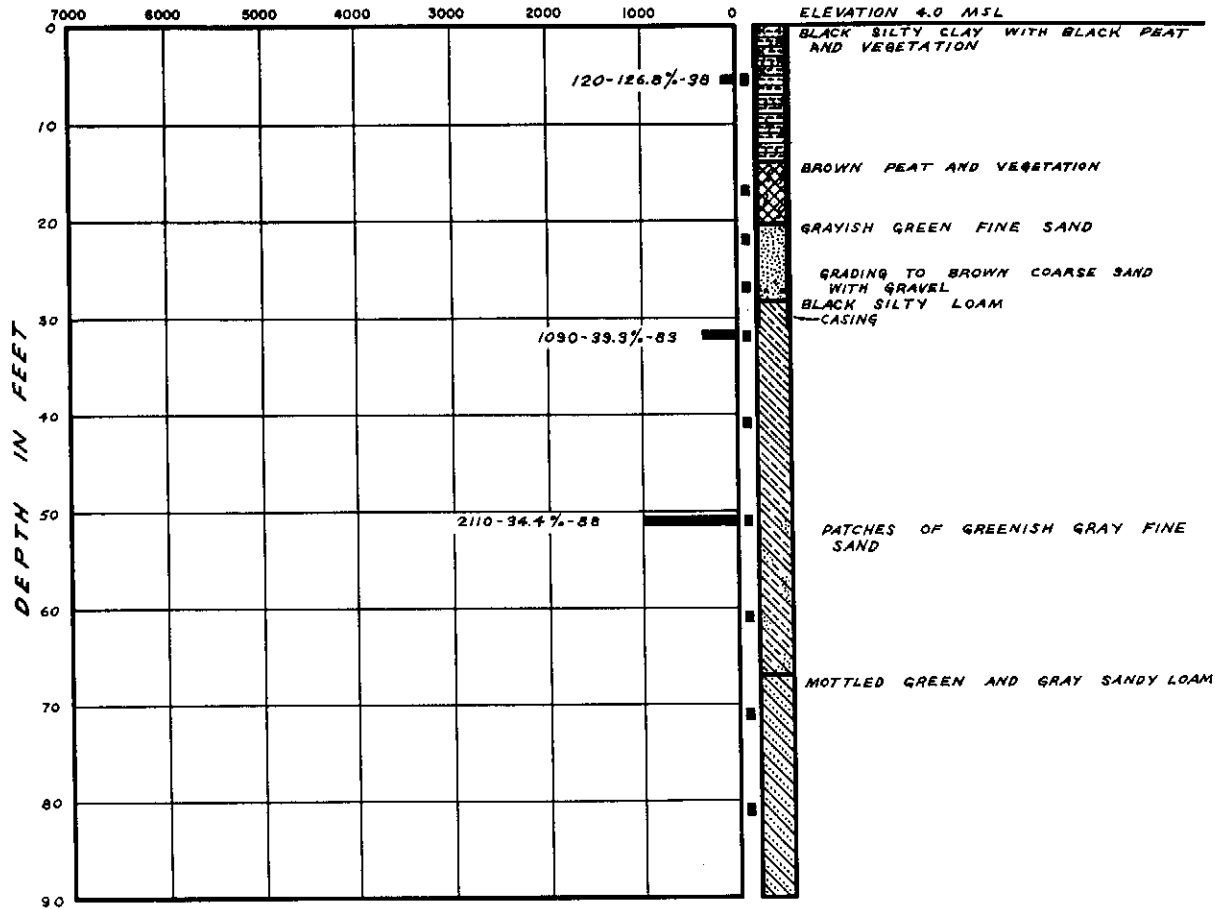


Dc54-11

BORING 12

N 577,520
E 445,380

SHEARING STRENGTH AND FRICTIONAL
RESISTANCE IN LBS./SQ. FT.



REVISIONS
BY _____ DATE _____ TO GO
BY _____ DATE _____ TO GO
PLATE _____ OF _____ PLATES

FILE 152-AA
BY BS DATE _____ TO GO
CHECKED BY _____ TO GO
APPROVED BY OFFICE ENGINEER _____

LOG OF BORINGS

DAMES & MOORE, Civil Engineers
FOUNDATION INVESTIGATIONS - SOIL MECHANICS ENGINEERING

PLATE A-1-K