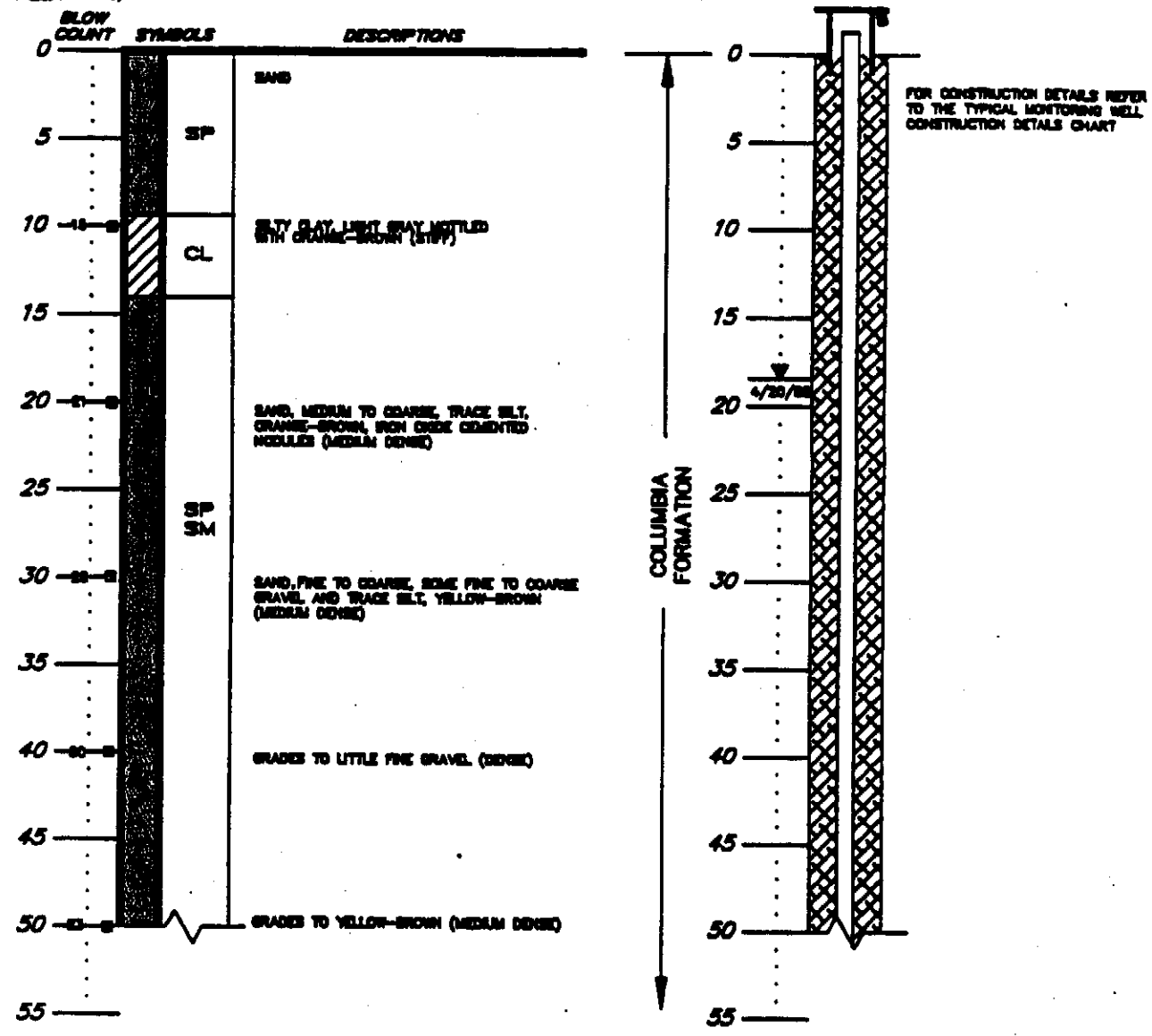


DC 53-41
1998-09-03b

BORING 180
SURFACE ELEVATION = 25.3'

WELL 180
TOP OF PVC ELEVATION = 27.06'



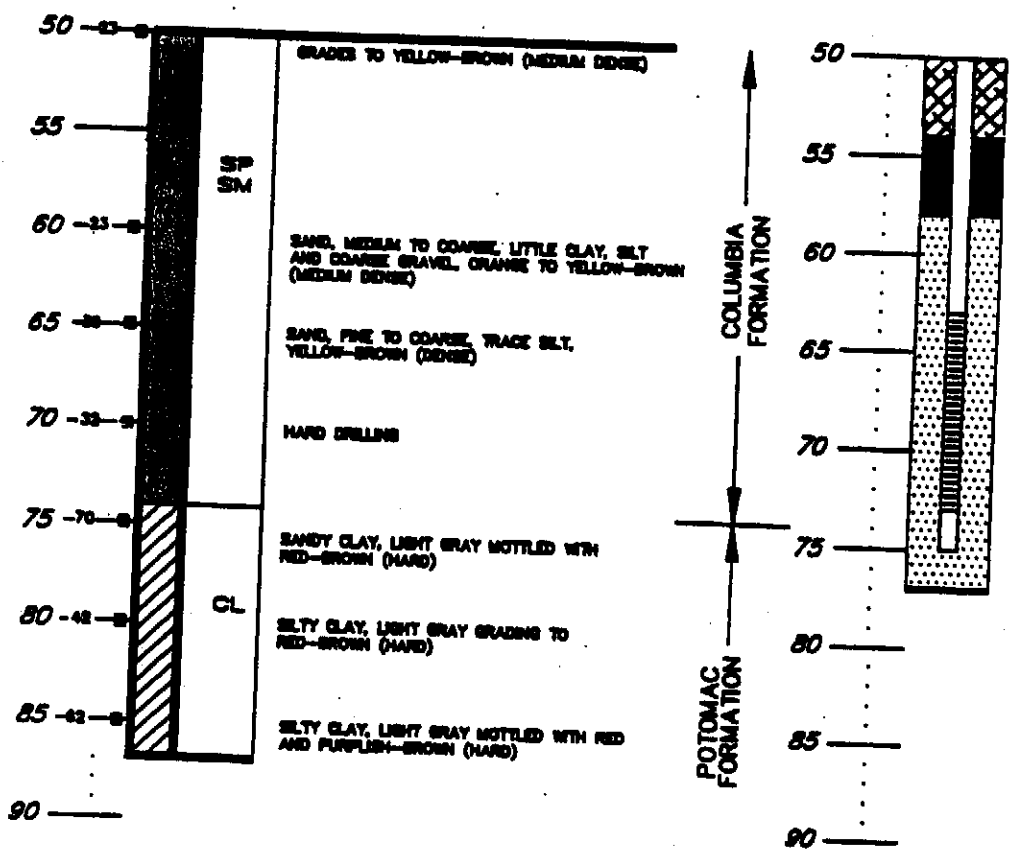
SHEET 1 OF 2

LOG OF BORING AND
MONITORING WELL DETAIL
TEXACO REFINERY
DELAWARE CITY, DELAWARE

DAMES & MOORE

BORING 180

WELL 180



FOR CONSTRUCTION DETAILS REFER TO THE TYPICAL MONITORING WELL CONSTRUCTION DETAILS CHART

NOTES:

1. DRILLING COMPLETED TO A DEPTH OF 87 FEET ON 3/22/88.
2. BENTONITE DRILLING MUD USED.
3. CAVE IN FROM 77 FEET TO 87 FEET.
4. 4" PVC CASING WITH 0.020 INCH SLOTS FROM 83 FEET TO 73 FEET.
5. GROUND WATER ELEVATION AT +7.02 FEET (ABOVE M.S.L.) OR 18.24 FEET BELOW GROUND SURFACE ON 4/15/88.

SHEET 2 OF 2

LOG OF BORING AND
 MONITORING WELL DETAIL
 TEXACO REFINERY
 DELAWARE CITY, DELAWARE

DAMES & MOORE