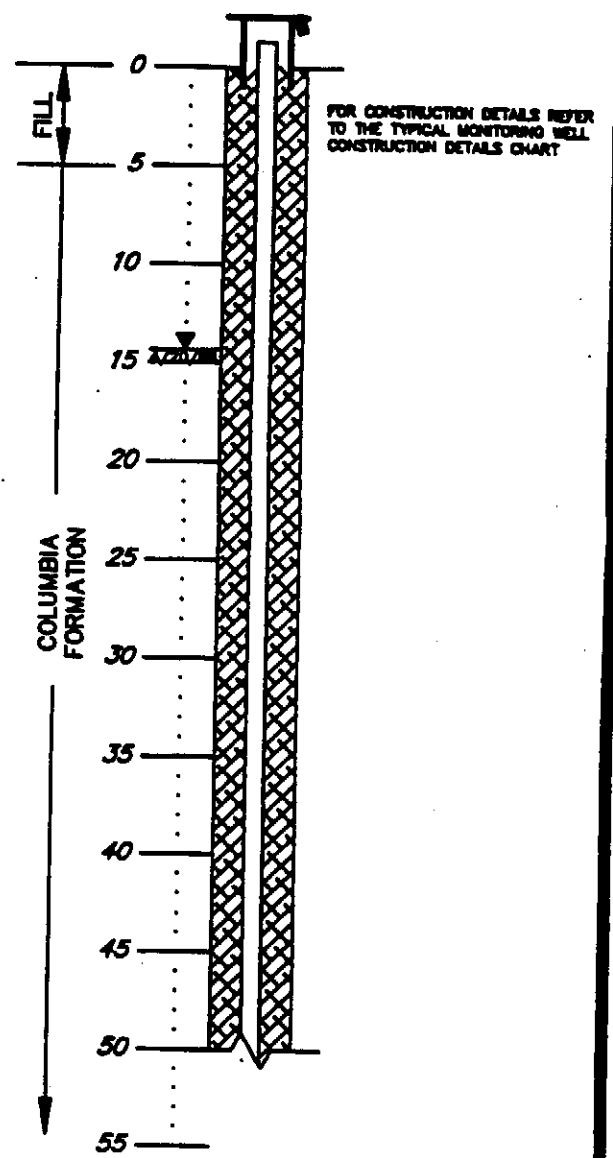
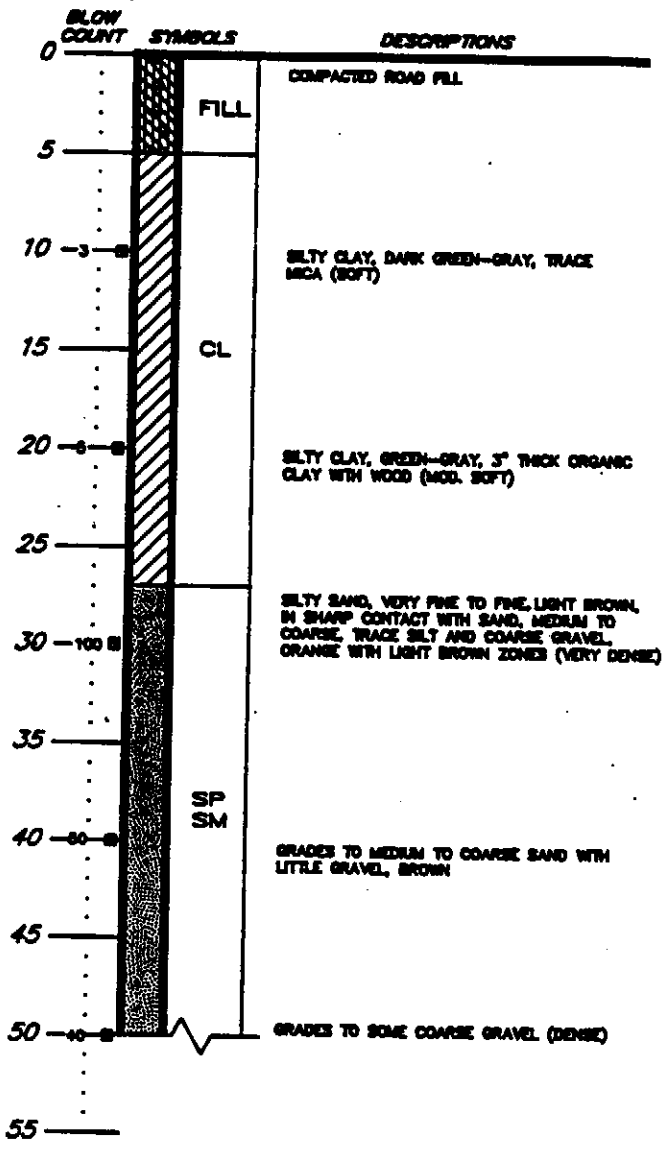


MW-19D

Dc53-76

BORING 19D
SURFACE ELEVATION = +21.4

WELL 19D
TOP OF PVC ELEVATION = +23.26

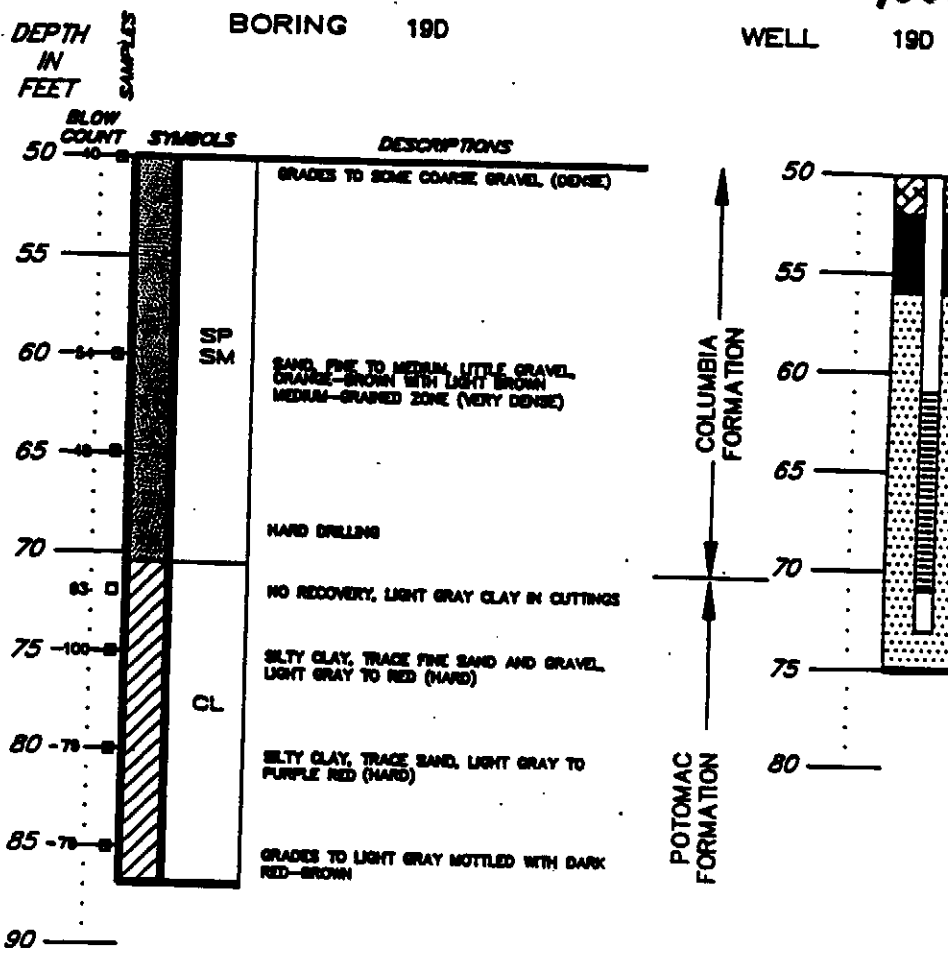


SHEET 1 OF 2

LOG OF BORING AND
MONITORING WELL DETAIL
TEXACO REFINERY
DELAWARE CITY, DELAWARE

DAMES & MOORE

Dc53-76



FOR CONSTRUCTION DETAILS REFER TO THE TYPICAL MONITORING WELL CONSTRUCTION DETAILS CHART

NOTES:

1. DRILLING COMPLETED TO A DEPTH OF 87 FEET ON 3/24/88.
2. BENTONITE DRILLING MUD USED.
3. CAVE IN FROM 75 TO 87 FEET.
4. 4" PVC CASING WITH 0.020 INCH SLOTS FROM 61 FEET TO 71 FEET.
5. GROUND WATER ELEVATION AT +7.11 FEET (ABOVE M.S.L.) OR 14.25 FEET BELOW GROUND SURFACE ON 4/20/88.

SHEET 2 OF 2

LOG OF BORING AND MONITORING WELL DETAIL
TEXACO REFINERY
DELAWARE CITY, DELAWARE

DAMES & MOORE