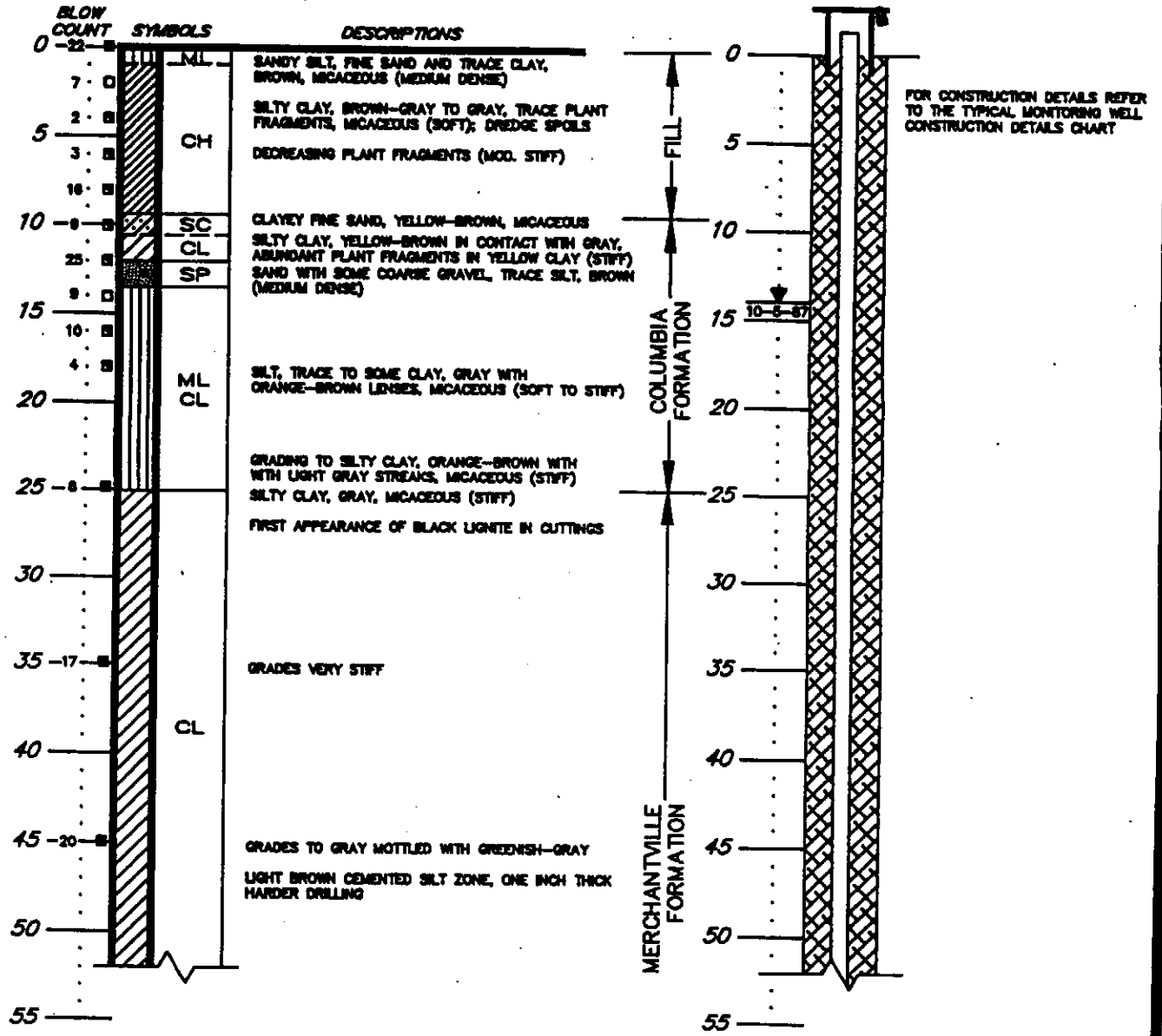


Dc53-74

BORING 3-8 SURFACE ELEVATION = +19.6 FEET
WELL 3-8 TOP OF PVC ELEVATION = +20.95 FEET



SHEET 1 OF 2

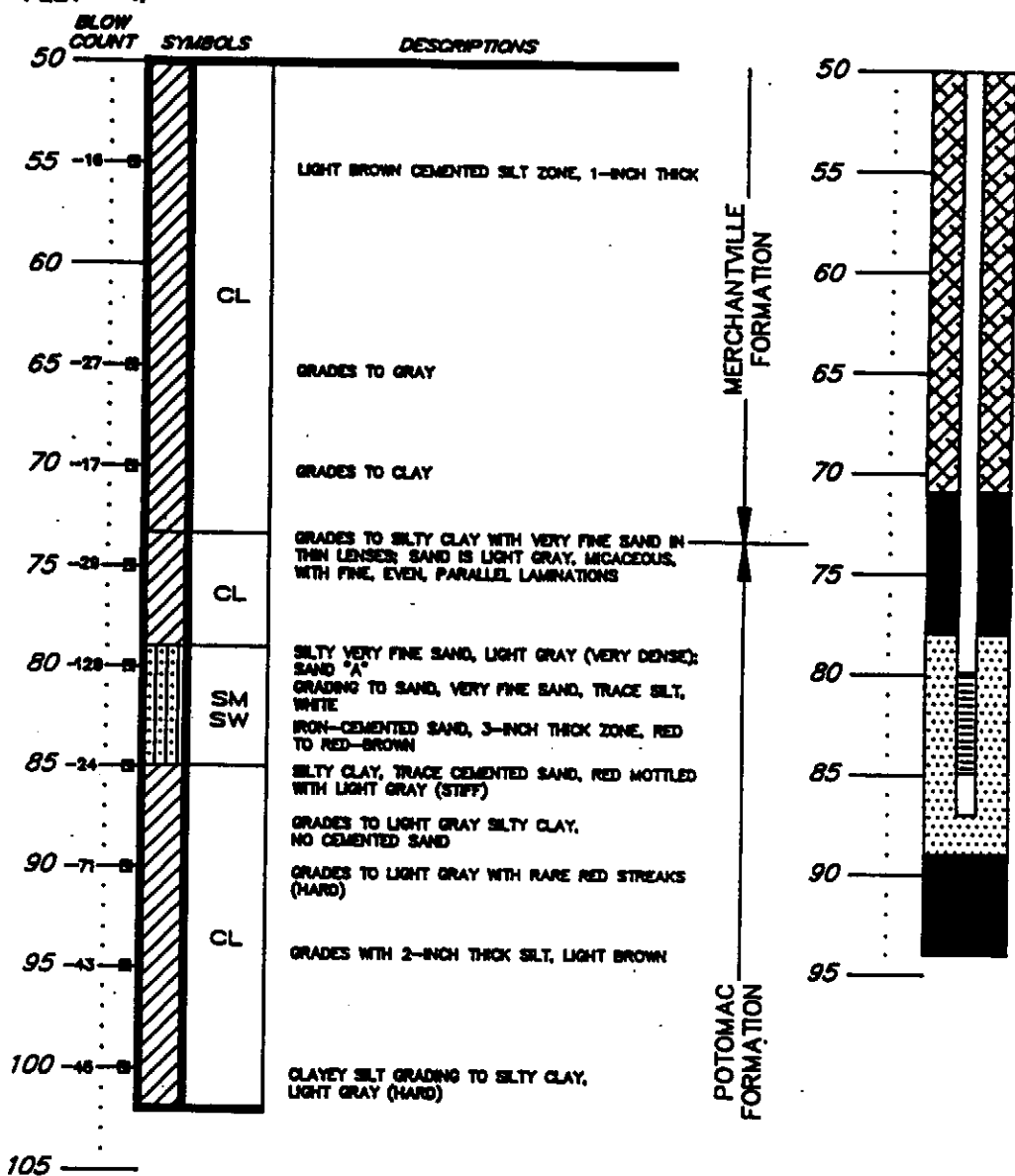
LOG OF BORING AND
 MONITORING WELL DETAIL
 TEXACO REFINERY
 DELAWARE CITY, DELAWARE

DAMES & MOORE

DEPTH
IN
FEET

BORING 3-B

WELL 3-B



1. DRILLING COMPLETED TO A DEPTH OF 102 FEET ON 9-2-87
2. BENTONITE DRILLING MUD USED
3. TOP POTOMAC FORMATION PICK BASED ON GEOPHYSICAL LOG
4. CAVE IN FROM 94 FEET TO 102 FEET
5. 4" PVC CASING WITH 0.010-INCH SLOTS FROM 80 FEET TO 85 FEET
6. GROUND WATER ELEVATION AT +5.80 FEET (ABOVE M.S.L.) OR 14.00 FEET BELOW GROUND SURFACE ON 10-6-87

SHEET 2 OF 2

LOG OF BORING AND
MONITORING WELL DETAIL
TEXACO REFINERY
DELAWARE CITY, DELAWARE

DAMES & MOORE