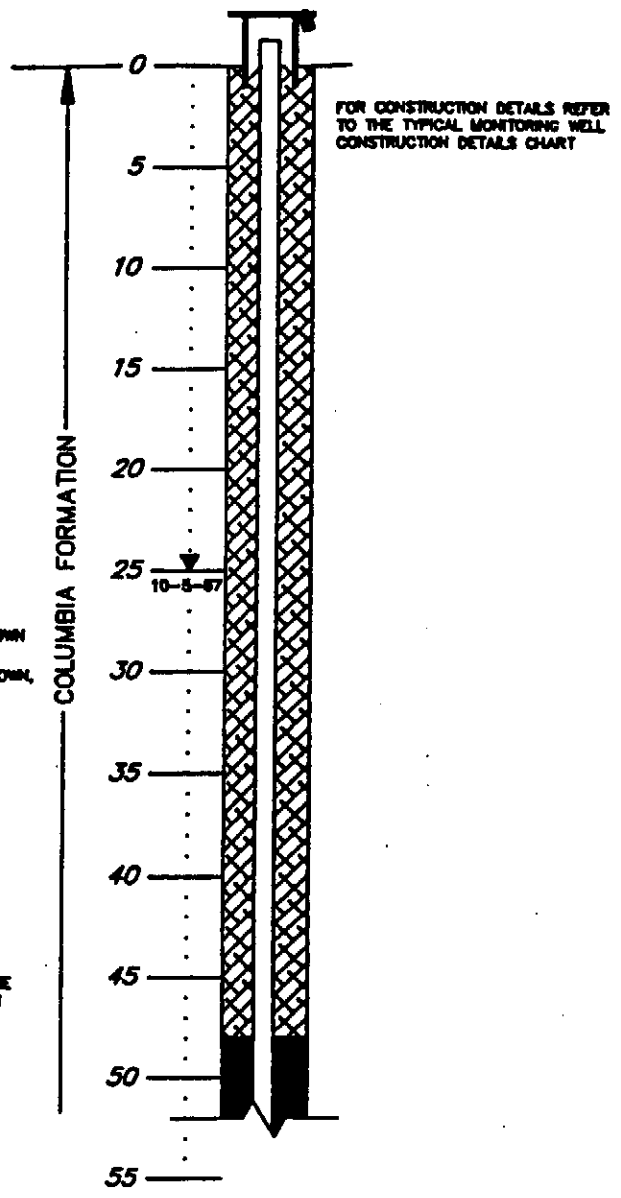
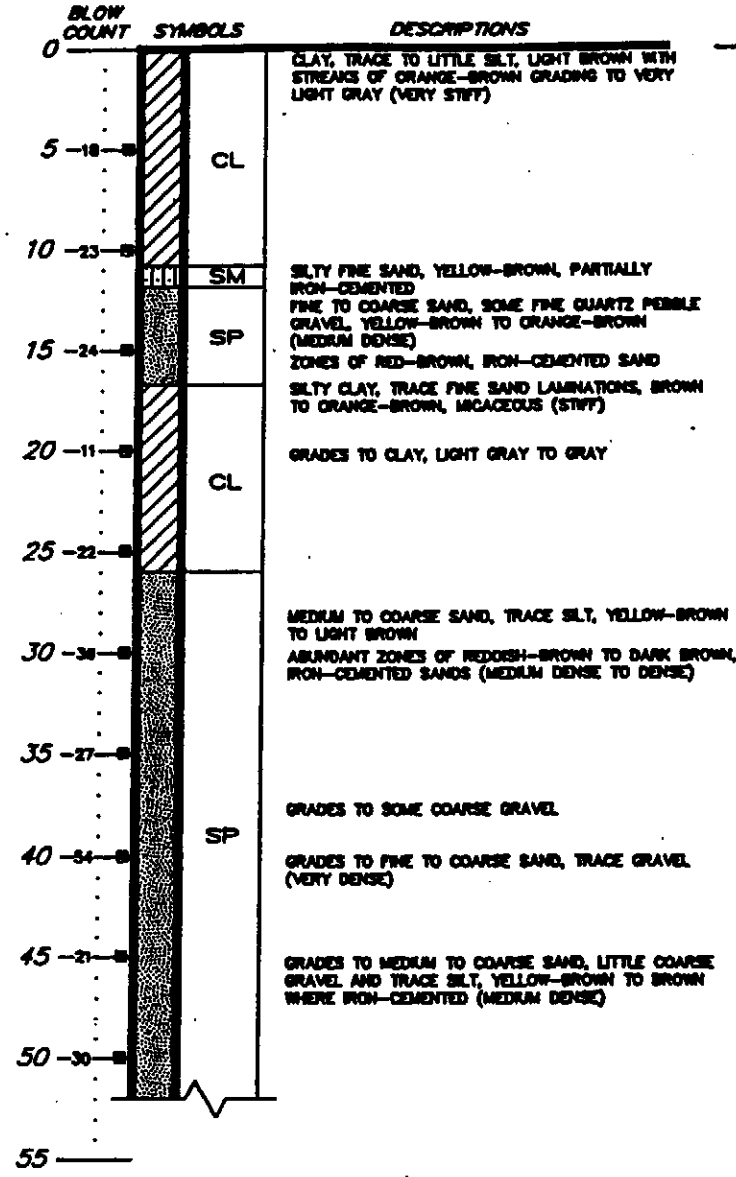


DEPTH IN FEET

BORING 300
SURFACE ELEVATION = +34.4 FEET

WELL 300
TOP OF PVC ELEVATION = +36.03 FEET



SHEET 1 OF 2

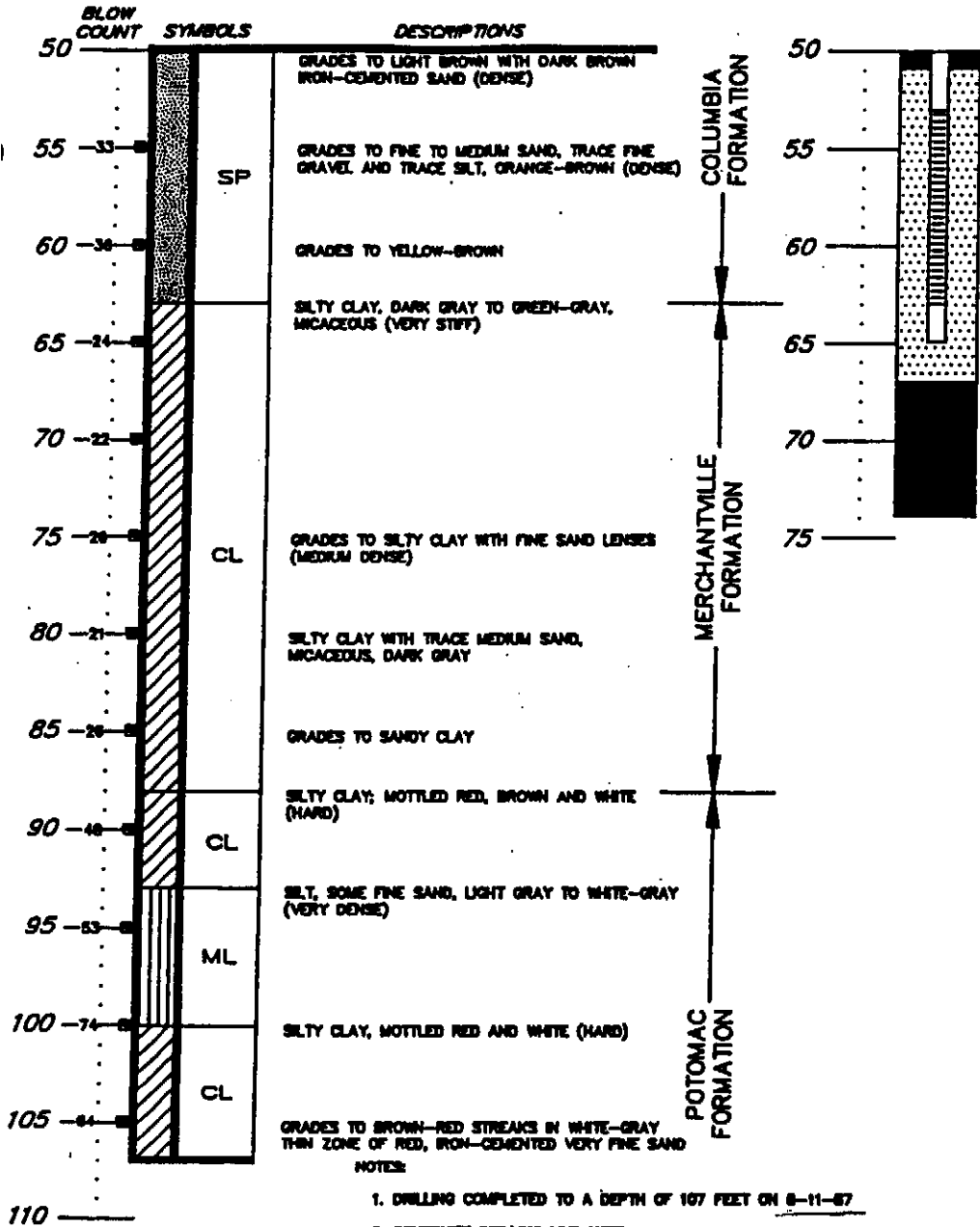
LOG OF BORING AND MONITORING WELL DETAIL
TEXACO REFINERY
DELAWARE CITY, DELAWARE

DAMES & MOORE

DEPTH
IN
FEET

BORING 300

WELL 300



FOR CONSTRUCTION DETAILS REFER TO THE TYPICAL MONITORING WELL CONSTRUCTION DETAILS CHART

NOTES:

1. DRILLING COMPLETED TO A DEPTH OF 107 FEET ON 8-11-87
2. BENTONITE DRILLING MUD USED
3. CAVE IN FROM 74 FEET TO 107 FEET
4. 4" PVC CASING WITH 0.020-INCH SLOTS FROM 53 FEET TO 63 FEET
5. GROUND WATER ELEVATION AT +8.38 FEET (M.S.L.) OR 25.01 FEET BELOW GROUND SURFACE ON 10-6-87

SHEET 2 OF 2

LOG OF BORING AND
MONITORING WELL DETAIL
TEXACO REFINERY
DELAWARE CITY, DELAWARE

DAMES & MOORE