

DC53-39

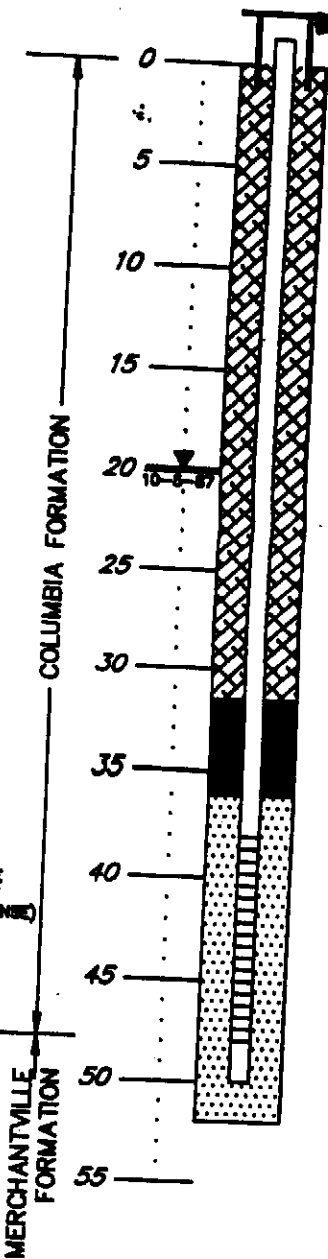
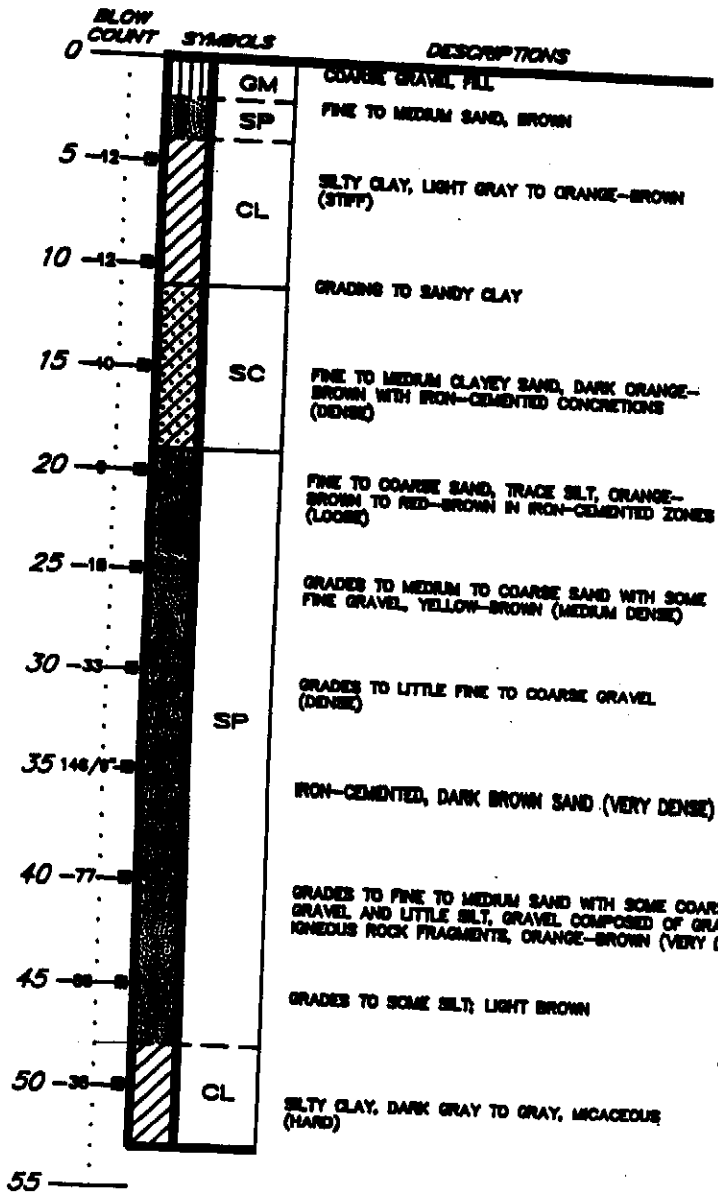
DEPTH  
IN  
FEET

### BORING 31D

SURFACE ELEVATION = +27.4 FEET

### WELL 31D

TOP OF PVC ELEVATION = +28.84 FEET



NOTES

1. DRILLING COMPLETED TO A DEPTH OF 83 FEET ON 8-14-87
2. BENTONITE DRILLING MUD USED
3. CAVE IN FROM 52 FEET TO 83 FEET
4. 4" PVC CASING WITH 0.020-INCH SLOTS FROM 38 FEET TO 48 FEET
5. GROUND WATER ELEVATION AT +7.84 FEET (ABOVE M.S.L.) OR 18.88 FEET BELOW GROUND SURFACE ON 10-8-87

LOG OF BORING AND  
MONITORING WELL DETAIL  
TEXACO REFINERY  
DELAWARE CITY, DELAWARE