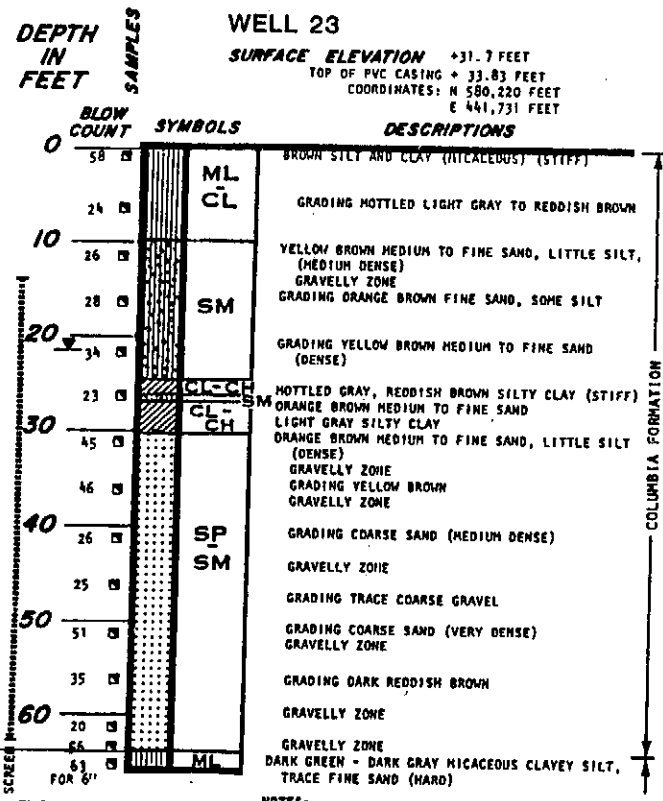


LTY

Dc53-176



- NOTES:**
- BORING TERMINATED AT 66.0 FEET ON SEPT. 24, 1980.
 - "REVERT" DRILLING MUD USED.
 - BOTTOM OF BOREHOLE -- 66.0 FEET
CAVE IN FROM 63.0 FEET TO 66.0 FEET
4" PVC CASING WITH 0.02" SLOTS FROM 14.0 FEET TO 63.0 FEET
GRAVEL PACK FROM 12.0 FEET TO 63.0 FEET
BENTONITE SEAL FROM 11.0 FEET TO 12.0 FEET
GROUT FROM 11.0 FEET TO SURFACE
STICK UP OF STEEL CASING +2.18 FEET
STICK UP OF PVC CASING +2.11 FEET
 - GROUND WATER AT AN ELEVATION OF 9.93 FEET ON SEPTEMBER 29, 1980.

**WELL LOG
AND CONSTRUCTION DETAILS**