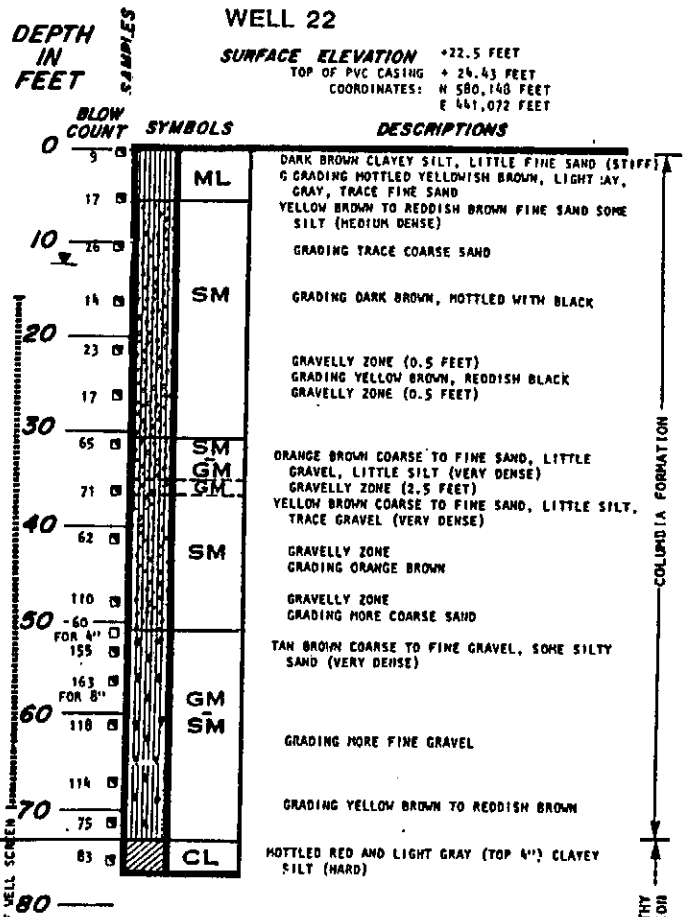


LTM

D-53-175



- NOTES:**
1. BORING TERMINATED AT 76.5 FEET ON SEPT. 26, 1980.
 2. "REVERT" DRILLING MUD USED.
 3. BOTTOM OF BOREHOLE -- 76.5 FEET
 CAVE IN FROM 69.5 FEET TO 76.5 FEET
 4" PVC CASING WITH 0.02" SLOTS FROM 16.0 FEET TO 69.5 FEET
 GRAVEL PACK FROM 14.0 FEET TO 69.5 FEET
 BENTONITE SEAL FROM 13.3 FEET TO 14.0 FEET
 GROUT FROM 13.3 FEET TO SURFACE
 STICK UP OF STEEL CASING +1.92 FEET
 STICK UP OF PVC CASING +1.87 FEET
 4. GROUND WATER AT AN ELEVATION OF 10.12 FEET ON SEPTEMBER 29, 1980.

**WELL LOGS
AND CONSTRUCTION DETAILS**