

No L-14 Sample Collector



MWH Americas, Inc.
335 Phoenixville Pike
Malvern, Pennsylvania 19355

Boring ID: SB3

DC53-126

Page 1 of 4

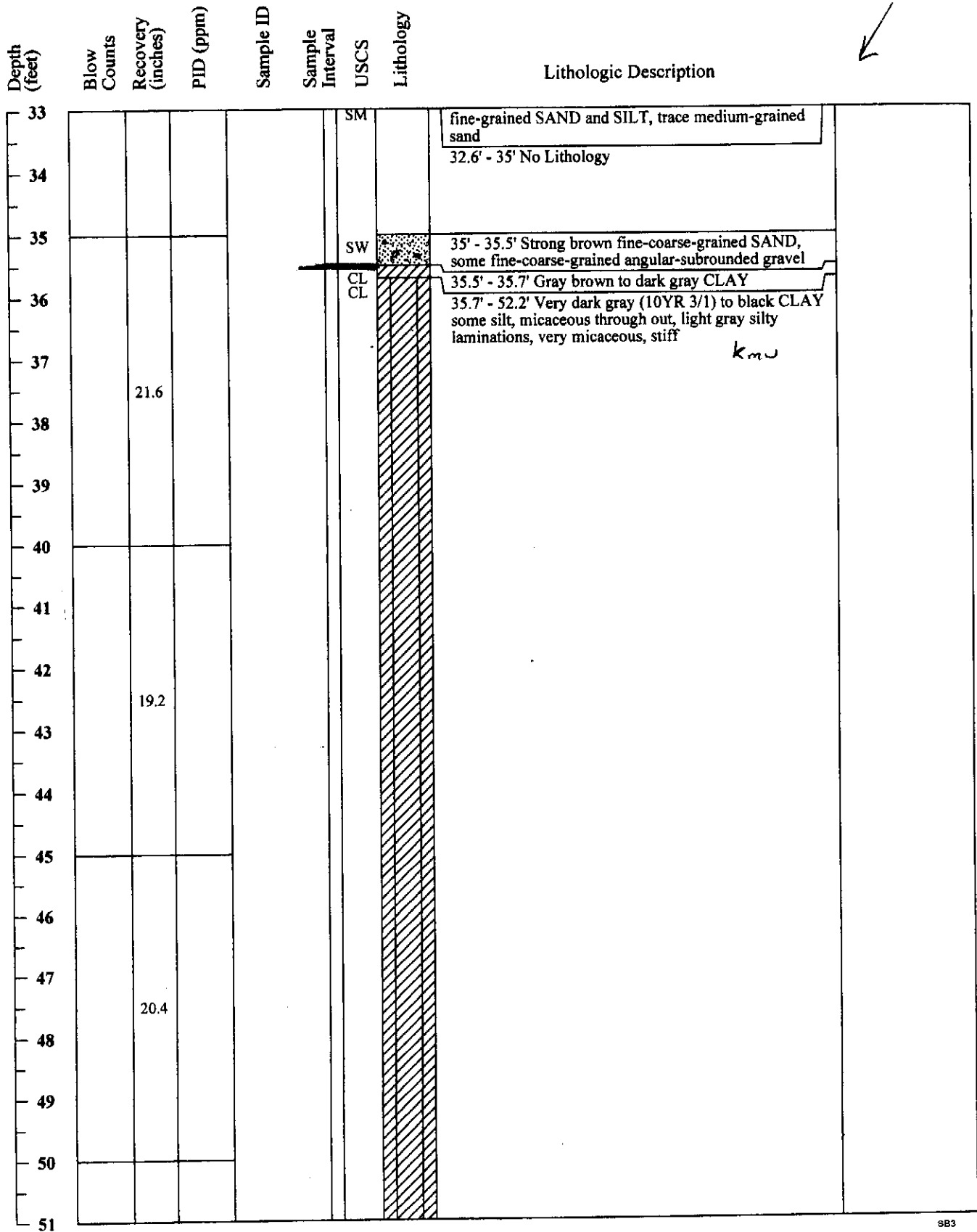
Project Name: Valero
Location: Delaware City, DE
Project Number:
Date Started: 5/29/2007
Date Finished: 5/29/2020
Drilling Method: Geoprobe
Sampling Method:
State Permit Number: NA

Boring Location: Delaware City Refinery
Drilling Company: BL Myers (J. Long)
Ground Elevation (ft/msl):
Total Depth (ft): 60.0'
Boring Diameter (in): "
Water Level During Drilling (ft/bgs):
Weather Conditions:
Logged By: A. Clark



Depth (feet)	Blow Counts	Recovery (inches)	PID (ppm)	Sample ID	Sample Interval	USCS	Lithology	Lithologic Description	Remarks
0			0			ML		0' - 0.7' Yellowish brown (10YR 5/6) SILT, SAND and GRAVEL, surface material	
1			0			GW		0.7' - 1.5' Dark gray GRAVEL, fine-coarse-grained SAND, gravel road material	
2			5.3			SW		1.5' - 2.1' Brownish yellow (10YR 6/8) fine-medium-grained SAND	
		39.6	19.7			ML		2.1' - 2.15' Dark grayish brown (2.5Y 4/2) SILT	
			16.5			SW		2.15' - 2.4' Grayish brown (5/2) fine-medium-grained SAND, fine-coarse-grained angular to subrounded GRAVEL	
								2.4' - 3.3' Light brownish yellow (10YR 6/6) fine-medium-grained SAND	
								3.3' - 5' No Lithology	
5			4.9			SW		5' - 7.6' Yellowish brown medium-grained SAND, little coarse-grained sand and fine-grained subrounded gravel, trace fine-grained sand, strong brown clay lense at 7.4' bgs, wet at 7' bgs	
6			1.0						
			1.1						
			2.1						
7		31.2	7.5						
8								7.6' - 10' No Lithology	
9									
10			0.7			SP		10' - 10.9' Brown (10YR 4/3) medium-grained SAND, trace fine-grained gravel and coarse and fine-grained sand, wet	
11			0.4			SW		10.9' - 15.5' Dark gray fine-medium-grained SAND, trace fine-grained subrounded gravel, coarse-grained sand and dark gray clay lenses, black and dark gray clay seam at 12.3' bgs, wet	
12			0.2					at 15.5' bgs dark gray brown clay seam 1/4"	
13		27.6							
14									
15									



Depth (feet)	Blow Counts	Recovery (inches)	PID (ppm)	Sample ID	Sample Interval	USCS	Lithology	Lithologic Description	Remarks
15			0.8			CL		15.5' - 16.2' Black grading to very dark gray CLAY, trace organic material, moist	
16			0.4					16.2' - 20' No Lithology	
17		14.4							
18									
19									
20			0			ML		20' - 25.4' Dark greenish gray (GLEY 1 4/1) SILT, trace very stiff clay, slightly moist to dry	
21			0						
22			0						
23		19.2							
24									
25			0					25' gray	
26			0			ML		25.4' - 26.5' Dark yellowish brown (10YR 4/4) with gray 5/1) bands	
27			0			ML		26.5' - 27.6' Dark yellowish brown SILT, strong brown (2.5YR 5/6) bands and dark red brown fine-grained sandy bands, trace fine-grained sand through out	
28		39.6	1.7			ML		27.6' - 28.1' Brown, strong brown and gray	
29			0			ML		28.1' - 31.3' Brown, strong brown and gray interbedded with dark reddish brown (5YR 5/4) SILT, little clay and gray silt, trace fine-grained sand, micaceous, coarse-grained subrounded gravel at 30.6' bgs	
30			0						
31						ML		31.3' - 32.5' Gray brown and brown banding SILT, little fine-grained sand, trace medium-coarse-grained sand	
32		31.2							
33						SP-		32.5' - 32.6' Yellowish red (5YR 5/8) (bright orange)	





Depth (feet)	Blow Counts	Recovery (inches)	PID (ppm)	Sample ID	Sample Interval	USCS	Lithology	Lithologic Description	Remarks
52		26.4						51' glauconite, cemented sand lenses, gray brown pyrite at 51.7' bgs	
53								52.2' - 55' No Lithology	
54									
55						ML		55' - 57.2' Very dark gray to black clayey SILT to silty CLAY, trace glauconite, gray brown lithified sand layers at 55.4'-55.6' bgs and 56.3'-56.5' bgs, micaceous	
56									
57		26.4						57.2' - 60' No Lithology	
58									
59									
60								60' End of Boring	
61									
62									
63									
64									
65									
66									
67									
68									
69									