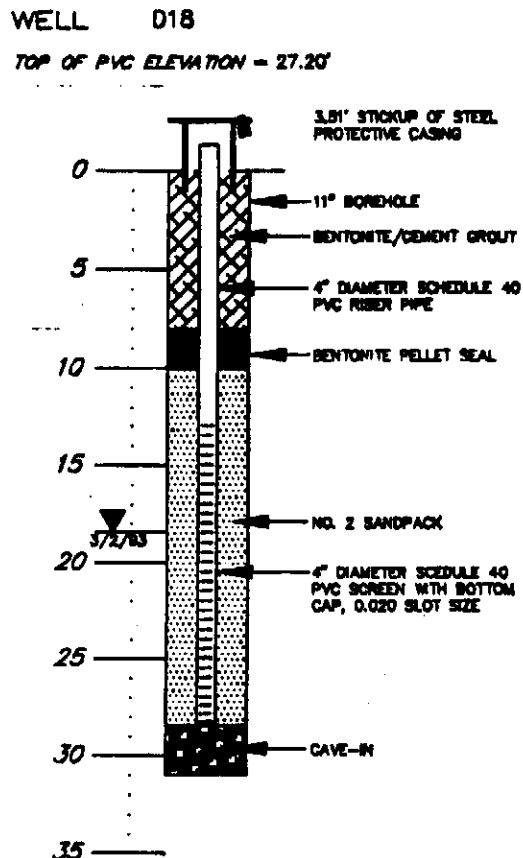
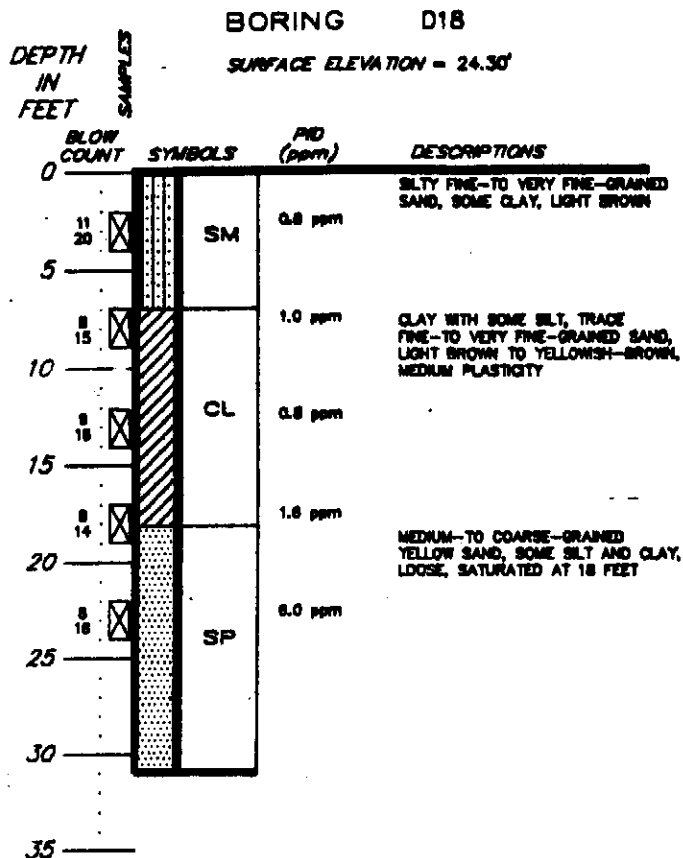




Dc53-118

Dc53-118



LOG OF BORING AND MONITORING WELL DETAIL
DELAWARE CITY REFINERY
DELAWARE CITY, DELAWARE

NOTES:

- ADVANCE AND COMPLETED WELL D18 ON FEBRUARY 12, 1983.
TOTAL DRILLED DEPTH = 31.0 FEET
FINAL WELL DEPTH = 28.8 FEET
- WELL DEVELOPED ON FEBRUARY 23, 1983.
- DEPTH OF STATIC WATER LEVEL = 18.18 FEET ON MARCH 2, 1983 MEASURED FROM TOP OF PVC.
- ELEVATIONS SURVEYED BY VANDERMARK & LYNCH, ARE BASED UPON STAR ENTERPRISE DATUM.
- WELL DRILLING AND CONSTRUCTION BY MARCOR OF PENNSYLVANIA, INC., DOWNTOWN, PENNSYLVANIA.
- WELL DRILLED BY HOLLOW STEM AUGER METHOD. SPLIT SPOON SAMPLES TAKEN AT 5-FOOT INTERVALS.
- SPLIT-SPOON SAMPLES WERE SCREENED FOR VOLATILE ORGANIC COMPOUNDS (VOCs) USING A PHOTONIZATION DETECTOR (PID). BACKGROUND LEVELS WERE 3.2 ppm. SPLIT-SPOON PID READINGS ARE RELATIVE TO BACKGROUND LEVELS.
- A "BLOW-COUNT" REFERS TO THE NUMBER OF BLOWS REQUIRED TO DRIVE A STANDARD SPLIT-SPOON SAMPLER A DISTANCE OF ONE-FOOT USING A 140 LB. HAMMER FALLING 30 INCHES.
- BOREHOLE WAS ADVANCED TO 31 FEET, BUT WELL SCREEN WAS PLACED AT 28 FEET BELOW GROUND SURFACE.

(3) 22347016/703-018 11/01/83 11:17