
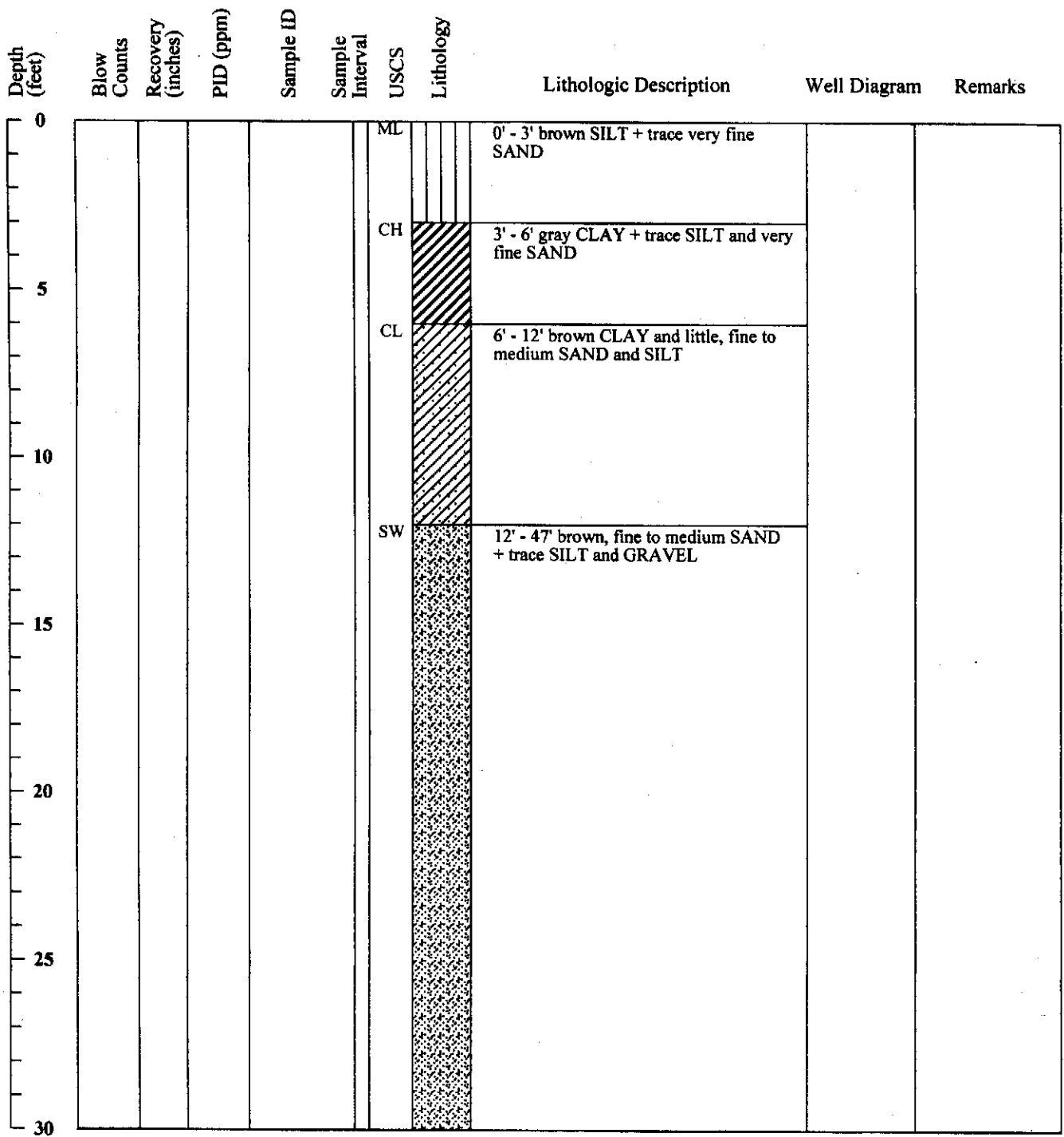


Dc53-102

 MWH MWH Americas, Inc. 335 Phoenixville Pike Malvern, Pennsylvania 19355	Boring ID: 1S Page 1 of 2
	Project Name: from URS gINT database urs_excel_3_19_06.gpj Location: Delaware City, DE Project Number: Date Started: 10/9/2002 Date Finished: 10/9/2002 Drilling Method: Hollow Stem Auger Sampling Method: State Permit Number: NA





MWH

MWH Americas, Inc.
335 Phoenixville Pike
Malvern, Pennsylvania 19355

Boring ID: 1S

Page 2 of 2

Depth (feet)	Blow Counts	Recovery (inches)	PID (ppm)	Sample ID	Sample Interval	USCS	Lithology	Lithologic Description	Well Diagram	Remarks
30										
35										
40										
45										
47						SW		47' - 49.5' brown, fine to coarse SAND and GRAVEL		
49.5						CH		49.5' - 51' dark gray CLAY + trace mica and very fine SAND		
50										
55										
60										
65										

QC

49.5

km³