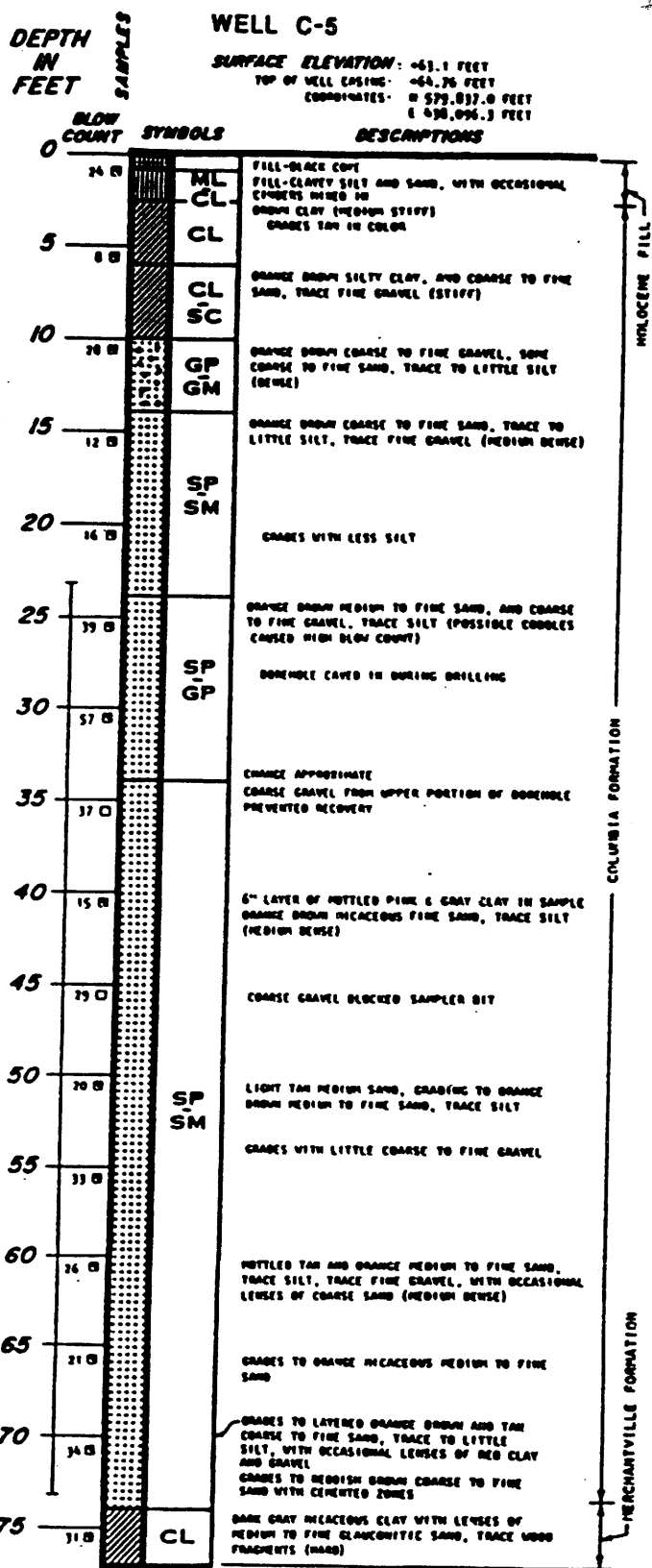


DC 52-52



GENERAL NOTES PLUS LOG OF WELL

GENERAL NOTES:

1. THE FIGURES IN THE COLUMN LABELED "BLOW COUNT" REFER TO THE NUMBER OF BLOWS REQUIRED TO DRIVE A STANDARD SPLIT SPOON SAMPLER A DISTANCE OF ONE FOOT (UNLESS OTHERWISE NOTED) USING A 140 POUND DRIVE WEIGHT FALLING 30 INCHES. THE STANDARD SPLIT SPOON SAMPLER IS 2 INCHES O.D. AND 1-3/8 INCHES I.D.
2. ELEVATIONS ARE IN FEET AND REFER TO A DATUM OF MEAN SEA LEVEL WHICH HAS AN ASSIGNED ELEVATION OF 0.0.
3. COORDINATES ARE IN FEET AND REFER TO THE STATE DELAWARE GRID SYSTEM.
4. THE DISCUSSION OF SOIL CONDITIONS IN THE TEXT OF THE REPORT IS NECESSARY FOR A PROPER UNDERSTANDING OF THE NATURE OF THE SUBSURFACE MATERIALS.

KEY:

- STANDARD SPLIT SPOON SAMPLE
- NO SAMPLE RECOVERY USING STANDARD SPLIT SPOON SAMPLER

NOTES:

1. DRILLING COMPLETED AT A DEPTH OF 77.0 FT. ON APRIL 15, 1979.
2. "NEWET" DRILLING MUD USED.
3. 4" PVC CASING WITH 0.020" WIDE SLOTS PLACED FROM A DEPTH OF 23.2 FT. TO 73.2 FT.
4. GADUINATER AT A DEPTH OF 39.59 FT. BELOW TOP OF WELL CASING ON APRIL 26, 1979.

74
Kov

LENGTH OF WELL SCREEN