

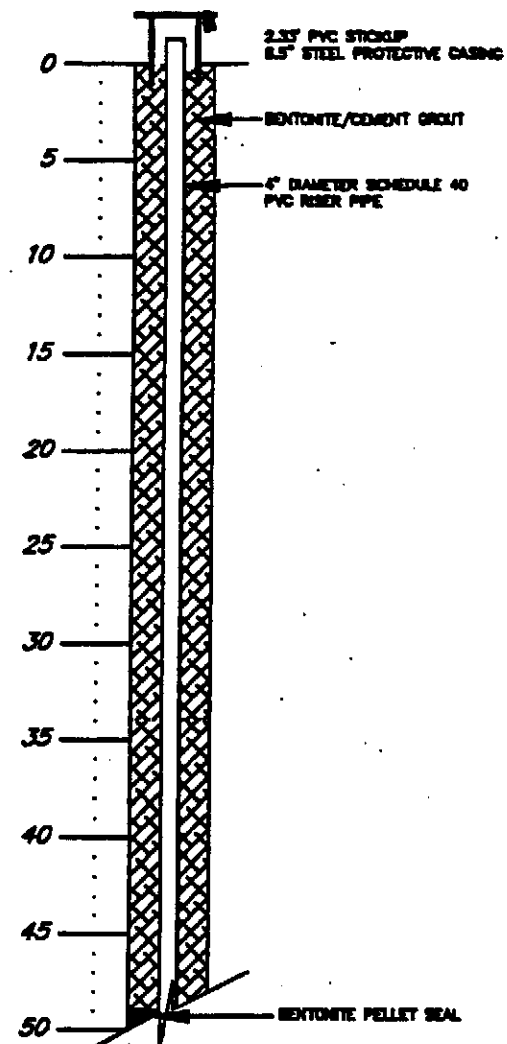
DEPTH
IN
FEET

BORING MW-11S
SURFACE ELEVATION = 80.48'

WELL MW-11S
TOP OF PVC ELEVATION = 82.82'

DEPTH IN FEET	BLOW COUNT	SYMBOLS	PHD READING	DESCRIPTIONS
0			0.0 ppm	FILL MATERIAL CONSISTING OF BRICK, CONCRETE, BLACK TAR LIKE MATERIAL, SAND MEDIUM-TO COARSE-GRAINED, ORANGE-BROWN
5	21, 17, 160	FILL	0.0 ppm	
10	7.2 7.2	SM	0.0 ppm	SAND, MEDIUM-TO COARSE-GRAINED, ORANGE-BROWN
12		FILL		BRICK AND ROCK NOTED FROM 12 TO 15 FEET
15	8.9 14.18		0.0 ppm	SAND, MEDIUM-TO COARSE-GRAINED, ORANGE-BROWN, SOME SILT
20	8.8 10.18	SM	0.0 ppm	SOME FINE GRAVEL
25	8.7 8.15	SM	0.0 ppm	
30	7.13 15.13		0.0 ppm	SAND, MEDIUM-TO COARSE-GRAINED, ORANGE-BROWN
35	7.18 18.20		0.0 ppm	
40	1.2 7.11	SM	0.0 ppm	
45	2.20 NA		0.0 ppm	SAND, SILT AND APPROXIMATELY 50% MEDIUM-GRAINED GRAVEL
50				

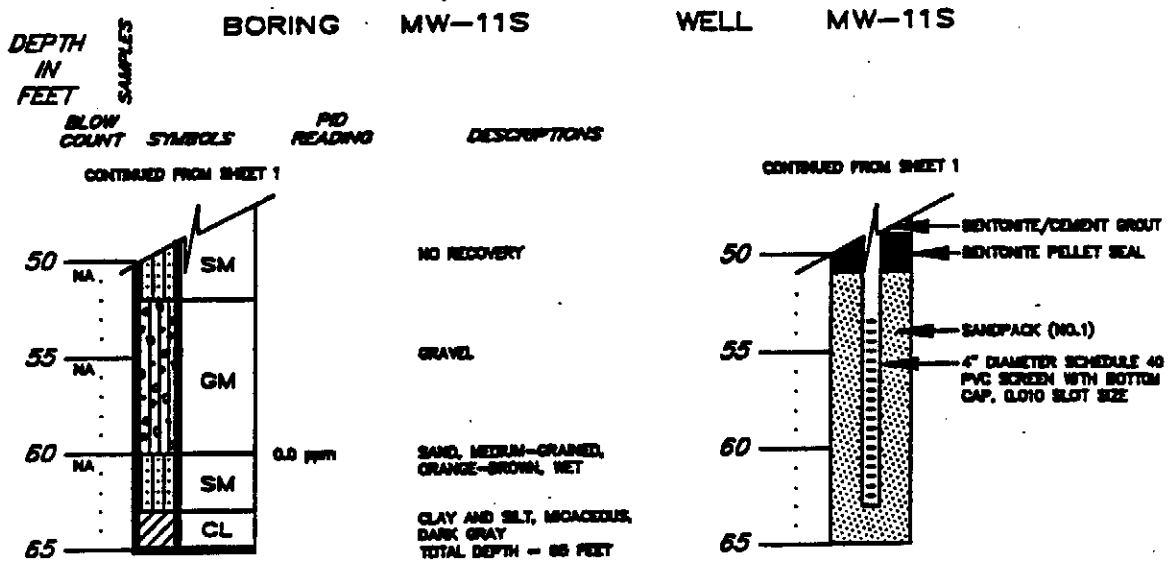
CONTINUED ON SHEET 2



CONTINUED ON SHEET 2

LOG OF SOIL BORING AND
MONITORING WELL DETAIL
INDUSTRIAL WASTE LANDFILL
STAR ENTERPRISE
DELAWARE CITY, DELAWARE

(S) 22347013\MW-11SA 07/13/93 07:31



NOTES:

- BORING TERMINATED AT A DEPTH OF 66 FEET BELOW GROUND SURFACE (BGS) ON JUNE 7, 1983. WELL COMPLETED ON JUNE 7, 1983.
- BORING DRILLED BY J.C. ANDERSON, INC. OF MOUNT LAUREL, NEW JERSEY.
- A 2-INCH DIAMETER SPLIT-SPOON SOIL SAMPLE WAS COLLECTED AT 6-FOOT INTERVALS.
- BORING WAS ADVANCED BY 8-INCH MID ROTARY, SPACED DRILL TO A DEPTH OF 66 FEET.
- A 4-INCH DIAMETER PVC MONITORING WELL WAS INSTALLED IN THE BOREHOLE ON JUNE 7, 1983.
- CONTACT BETWEEN THE MERCHANTVILLE AND COLUMBIA FORMATIONS IDENTIFIED AT 63 FEET BGS.
- DEPTH TO WATER ON JUNE 8, 1983 WAS 38.10 FEET (BGS).
- NA = BLOW COUNT NOT RECORDED.
- PID READINGS ARE WITH RESPECT TO BACKGROUND AND REPRESENT THE PID READINGS OF RECOVERED SOIL SAMPLES (HEADSPACE ANALYSIS).

LOG OF SOIL BORING AND
MONITORING WELL DETAIL
INDUSTRIAL WASTE LANDFILL
STAR ENTERPRISE
DELAWARE CITY, DELAWARE

2/2X