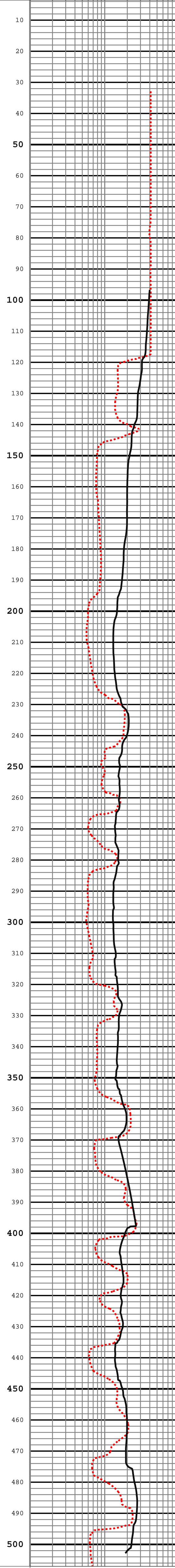


(SP)		
-250	MV	200
(GAMMA)		
0	API-GR	170



(GAMMA)		
0	API-GR	170
(SP)		
-250	MV	200

(RES(64N))		
10	OHM-M	1000
(RES(16N))		
10	OHM-M	1000



(RES(16N))		
10	OHM-M	1000
(RES(64N))		
10	OHM-M	1000