

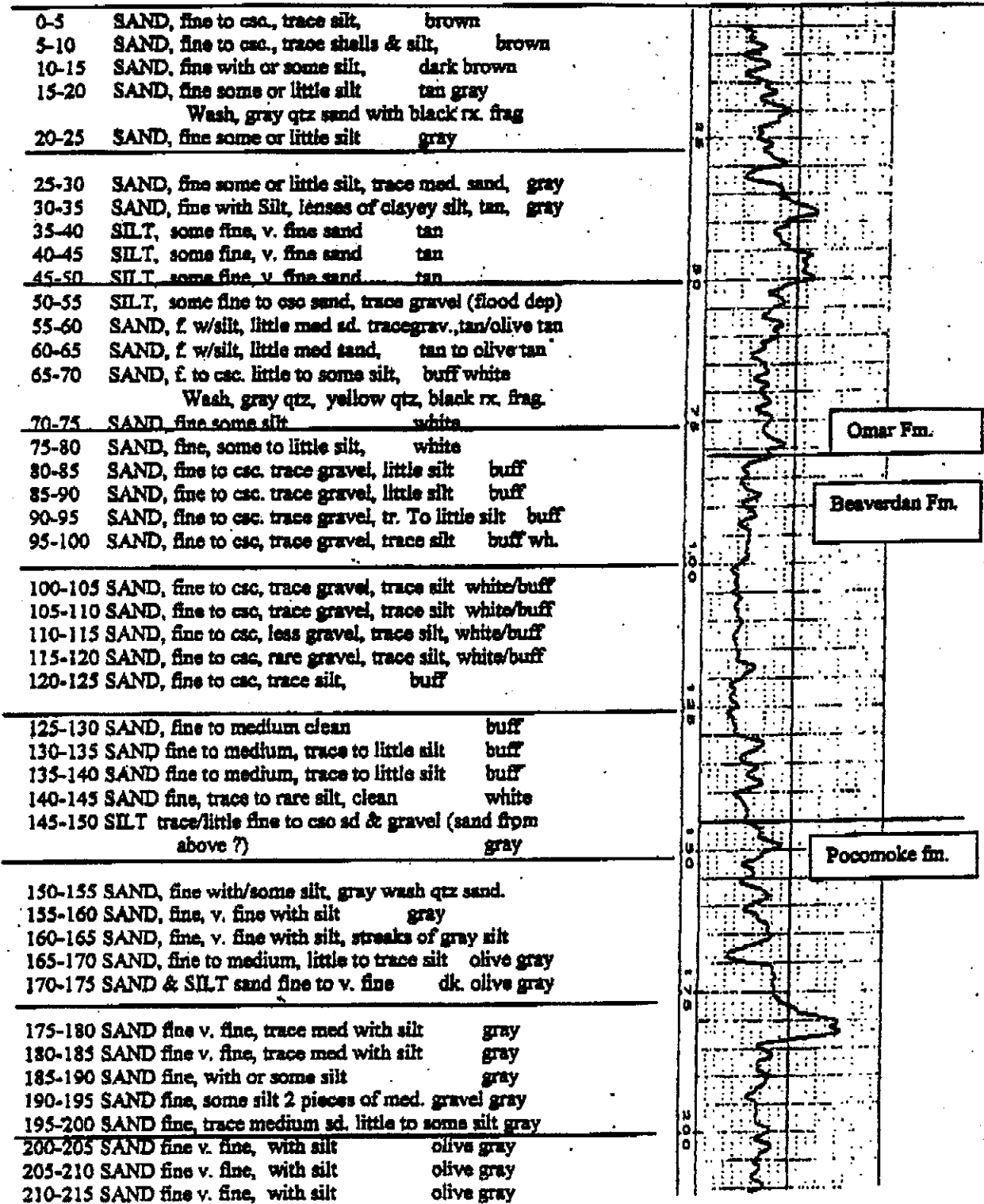
R, 22-16

Artesian Water Company - Fenwick Island State Park  
 Permit #167632-W (FW-1)

Page 2 of 3

Fenwick Island ASR Pilot hole

Gamma Scale 0-100 CPS



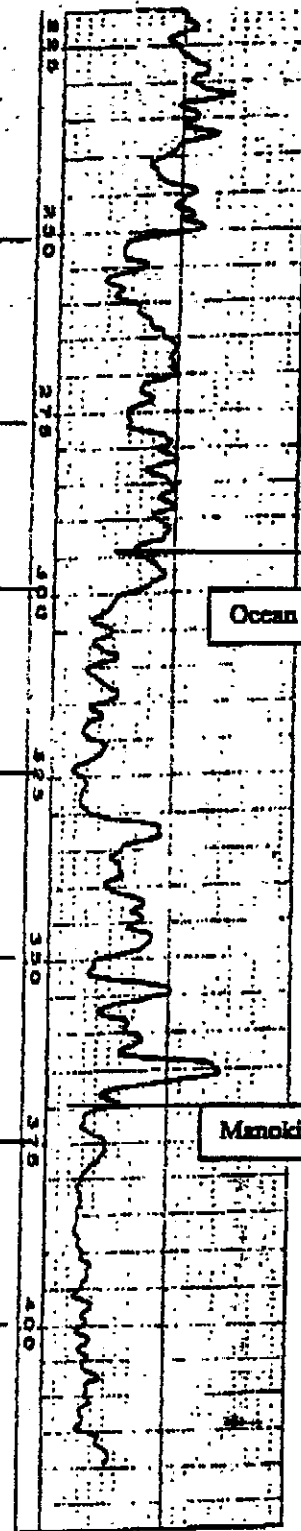
Artesian Water Company - Fenwick Island State Park  
 Permit #167632-W (FW-1)

12, 22-16  
 Page 3 of 3

**Fenwick Island ASR Pilot Hole**

Gamma Scale 0-100 CPS

215-220 SAND fine v. fine, with silt	olive gray
220-225 SAND fine v. fine, with silt	olive gray
225-230 SAND fine v. fine, with silt	olive gray
230-235 SAND fine v. fine, with silt	olive gray
235-240 SAND fine v. fine, with silt	olive gray
240-245 SAND fine v. fine, some to with silt	olive gray
245-250 SAND fine v. fine, some silt greenish to olive gray	
<hr/>	
250-255 SAND fine v. fine, some silt greenish to olive gray	
255-260 SAND fine v. fine, with silt	gray
260-265 SILT	gray
265-270 SAND & SILT, sd. fine v. fine, (wash is gray qtz sand and rare black rock frags)	olive gray
270-275 SAND & SILT, sd. fine v. fine,	gray
<hr/>	
275-280 SAND & SILT, sd. fine v. fine,	gray
280-285 SAND, fine v. fine, with silt	gray
285-290 SAND & SILT, sd. fine v. fine,	gray
290-295 SAND & SILT, sd. fine v. fine,	tan gray
295-300 SAND & SILT, sd. fine v. fine, wood frag dk. gray	
300-305 SAND, fine v. fine, little to trace silt	lt. brn. gray
305-310 SAND, fine v. f., little to trace silt/mica	lt. brn. gray
310-315 SAND, fine v. fine, trace silt	lt. brown gray
315-320 SAND, fine v. fine, trace silt	lt. brown gray
320-325 SAND, fine v. fine, trace silt (wash all gray qtz sand and black rock frags)	lt. brown gray
325-330 SAND, fine v. fine, trace silt	lt. brown gray
330-335 SAND, fine v. fine, little to some(?) silt	gray
335-340 SAND, fine v. fine, little to some(?) silt	gray
340-345 SAND, fine v. fine, little to some(?) silt	gray
345-350 SAND, fine v. fine, little to some(?) silt (wash all gray qtz sand and black rock frags)	gray
<hr/>	
350-355 SILT, trace to little fine v. fine sand,	gray
355-360 SILT, trace to little fine v. fine sand,	gray
360-365 SAND, fine v. fine trace to little silt	gray
365-370 SAND, fine trace medium trace to little silt	gray
370-375 SAND, fine to medium rare csc. trace silt (wash all gray qtz sand and black rock frags)	brown
375-380 SAND, fine to medium rare csc. trace silt	brown
380-385 SAND, fine to med. tr. csc & grav, trace silt brown (wash gray qtz sand & black rx. frag more abundant)	
385-390 SAND, fine to med. tr. csc & grav, trace silt brown	
390-395 SAND, fine to med. tr. csc & grav, trace silt brown	
395-400 SAND, fine to med. tr. csc & grav, trace silt brown	
400-405 SAND, fine to med, rare wood	grayish brown
405-410 SAND, fine to med. tr. csc & grav, trace silt	gray
410-415 SAND, fine, trace medium, trace silt	gray
415-420 SAND, fine, trace medium, trace silt	gray
420-425 SAND, very clean, fine to csc. WASH??	
425-430 SAND, very clean, driller reports harder drilling silt?	



Ocean City sand

Manokin Fm.

380  
 ↑  
 35'  
 ↓  
 915