
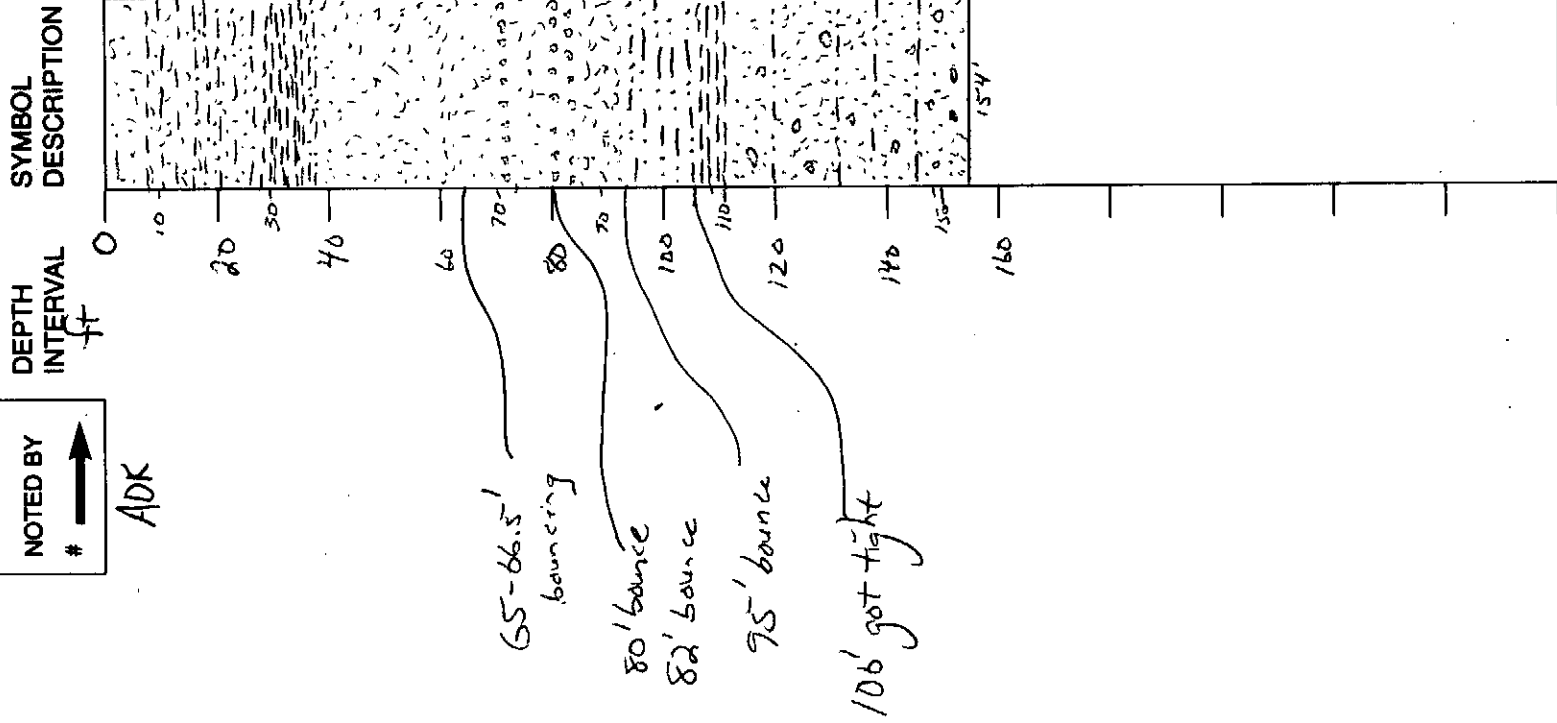


SAMPLES,  
PHOTOS  
NOTED BY  
# 

ADK

DGS ID R1135-31



DESCRIPTION, COMMENTS

0-6' fill?  
 6"-1' bk silt and f sd  
 1-4' dk gry-br slty f sd grading down into  
 yel-gry slsly f sd  
 4-9' yel-gry slsly f sd, becomes lam w/  
 lt gry/bl clay and or f sd by 9'  
 9-14' finely lam lt gry clay and or f sd  
 14-28' lt gry silt and f sd  
 26-39' lt gry slty clay, grades down into  
 lt gry slty f-cs sd by 35'  
 39-62' dk gry slsly f-m sd  
 62-89' dk gry-wh slsly - clean f-m sd  
 w/ widely scat gvl beds  
 89-95' dk gry f sd  
 95-106' brn slty v f sd  
 106-110' dk gry f sdy clay  
 110-154' or-gry f sd and silt to  
 slty - v slty f sd w/ scat  
 < 5 gvl

WATER-LEVEL DATA

Date 1/1-12-04

Water Level 21.1

Device Used: A M O R S T W  
 air m-scope other reported static water-level  
 line level down recorder

\* Tide Flooding at time of measurement

MAIL TO:

WATER SUPPLY SECTION  
 DIVISION OF WATER RESOURCES  
 89 KINGS HIGHWAY  
 DOVER, DELAWARE 19901  
 PHONE: 302-739-3665  
 FAX: 302-739-2296

STATE OF DELAWARE  
 DEPARTMENT OF NATURAL RESOURCES  
 AND ENVIRONMENTAL CONTROL

WELL COMPLETION REPORT MUST  
 BE RETURNED WITHIN 30 DAYS OF  
 CONSTRUCTION DATE

FORMATION LOG

PAGE 1 OF 1 PAGES

PLEASE PRINT OR TYPE - ILLEGIBLE OR INCOMPLETE FORMS WILL BE RETURNED

PERMIT#	LOCAL ID#	LIC#	TOP OF STRATA	BOTTOM OF STRATA
205147	Ri 35-31	999		
PROPERTY OWNER	DGT <u>Swartz</u>			
WELL CONTRACTOR	DGS			
DESCRIPTION	TOP OF STRATA	BOTTOM OF STRATA		
road fill	0	6"		
black silt and fine sand	6"	1'		
dark gray - brown silty fine sand grading down into yellow - gray slightly silty fine sand	1'	4"		
yellow gray slightly silty fine sand, becomes laminated with light green - blue clay and orange fine sand by 9'	4	9'		
finely laminated light gray clay and orange fine sand	9	14'		
light gray silt and fine sand	14	26'		
light gray silty clay grading down into silty fine coarse sand by 35'	26	39'		
olive gray slightly silty fine - medium sand	39	62'		
olive gray - white slightly silty - clean fine - medium sand with widely scattered gravel beds (avg based @ 65' to 80', 82')	62	89'		
olive gray fine sand	89	95'		
brown silty very fine sand	95	106'		
olive gray - green fine sandy clay	106	110'		
OTHER COMMENTS: orange - gray fine sand and silt to silty - red silty fine sand with scattered coarse gravel	110	154'		

I HEREBY AFFIRM THE INFORMATION I HAVE SUBMITTED IS ACCURATE AND CORRECT

Signature of Well Driller in Charge [Signature] License# 686 Date 11/17/04